

OILFIELD RESEARCH LABORATORIES

536 NORTH HIGHLAND - CHANUTE, KANSAS - PHONE HE1-2650

March 15, 1966

23-28-20 F

Stan Cannan
701 South Highland
Chanute, Kansas

Dear Sir:

Enclosed herewith are the results of tests run on the Rotary core taken from the Blaine Lease, Well No. 6, Neosho County, Kansas, and submitted to our laboratory on March 13, 1966.

This core was sampled after being received in the laboratory. The well was drilled in semi-virgin territory.

Your business is greatly appreciated.

Very truly yours,

OILFIELD RESEARCH LABORATORIES

Carl L. Pate

CLP:rf

5 c.

BLAINE 6

Oilfield Research Laboratories

GENERAL INFORMATION & SUMMARY

Company Stan Cannan Lease Blaine Well No. 6

Location _____

Section 23 Twp. 28S Rge. 20E County Neosho State Kansas

Name of Sand - - - - - Bartlesville

Top of Core - - - - - 474.0

Bottom of Core - - - - - 486.0

Top of Sand - - - - - (Cored) 474.0

Bottom of ^{good}Sand - - - - - 483.6

Total Feet of Permeable Sand - - - - - 11.0

Total Feet of Floodable Sand - - - - - _____

Distribution of Permeable Sand:
Permeability Range
Millidarcys

Permeability Range Millidarcys	Feet	Cum. Ft.
0 - 10	3.0	3.0
10 - 20	2.0	5.0
20 - 60	3.0	8.0
60 & above	3.0	11.0

Average Permeability Millidarcys - - - - - 34.2

Average Percent Porosity - - - - - 19.0

Average Percent Oil Saturation - - - - - 43.6

Average Percent Water Saturation - - - - - 29.5

Average Oil Content, Bbls./A. Ft. - - - - - 654.

Total Oil Content, Bbls./Acre - - - - - 7,843.

Average Percent Oil Recovery by Laboratory Flooding Tests - - - - - _____

Average Oil Recovery by Laboratory Flooding Tests, Bbls./A. Ft. - - - - - _____

Total Oil Recovery by Laboratory Flooding Tests, Bbls./Acre - - - - - _____

Total Calculated Oil Recovery, Bbls./Acre - - - - - _____

Packer Setting, Feet - - - - - _____

Viscosity, Centipoises @ - - - - - _____

A. P. I. Gravity, degrees @ 60 °F - - - - - _____

Elevation, Feet - - - - - _____

OILFIELD RESEARCH LABORATORIES

-LOG-

Company Stan Cannan Lease Blaine Well No. 6

Depth Interval, Description
Feet

474.0 - 483.6 - Brown, laminated, slightly shaly sandstone.

483.6 - 484.6 - Laminated sandstone and shale.

484.6 - 486.0 - Dark carbonaceous sandstone.

Oilfield Research Laboratories

RESULTS OF SATURATION & PERMEABILITY TESTS

TABLE 1-B

Company Stan Cannan Lease Blaine Well No. 6

Sample No.	Depth, Feet	Effective Porosity Percent	Percent Saturation			Oil Content Bbls. / A Ft.	Perm., Mill.	Feet of Sand		Total Oil Content	Perm. Capacity Ft. X md.
			Oil	Water	Total			Ft.	Cum. Ft.		
1	474.1	17.1	45	27	72	598	0.88	0.6	0.6	359	0.53
2	475.1	20.8	49	25	74	791	48.	1.0	1.6	791	48.00
3	476.1	20.5	47	20	67	747	88.	1.0	2.6	747	88.00
4	477.1	21.0	34	26	60	555	1.1	1.0	3.6	555	1.10
5	478.1	20.4	46	21	67	729	22.	1.0	4.6	729	22.00
6	479.1	21.2	45	23	68	742	17.	1.0	5.6	742	17.00
7	480.1	19.8	44	26	70	676	37.	1.0	6.6	676	37.00
8	481.1	19.2	43	28	71	641	82.	1.0	7.6	641	82.00
9	482.1	20.3	46	26	72	726	61.	1.0	8.6	726	61.00
10	483.1	18.6	51	35	86	737	15.	1.0	9.6	737	15.00
11	484.1	13.1	9	56	65	92	Imp.	1.0	10.6	92	0.00
12	485.1	16.3	59	37	96	748	3.5	1.4	12.0	1,048	4.90
								Total		7,843	

Oilfield Research Laboratories

SUMMARY OF PERMEABILITY & SATURATION TESTS

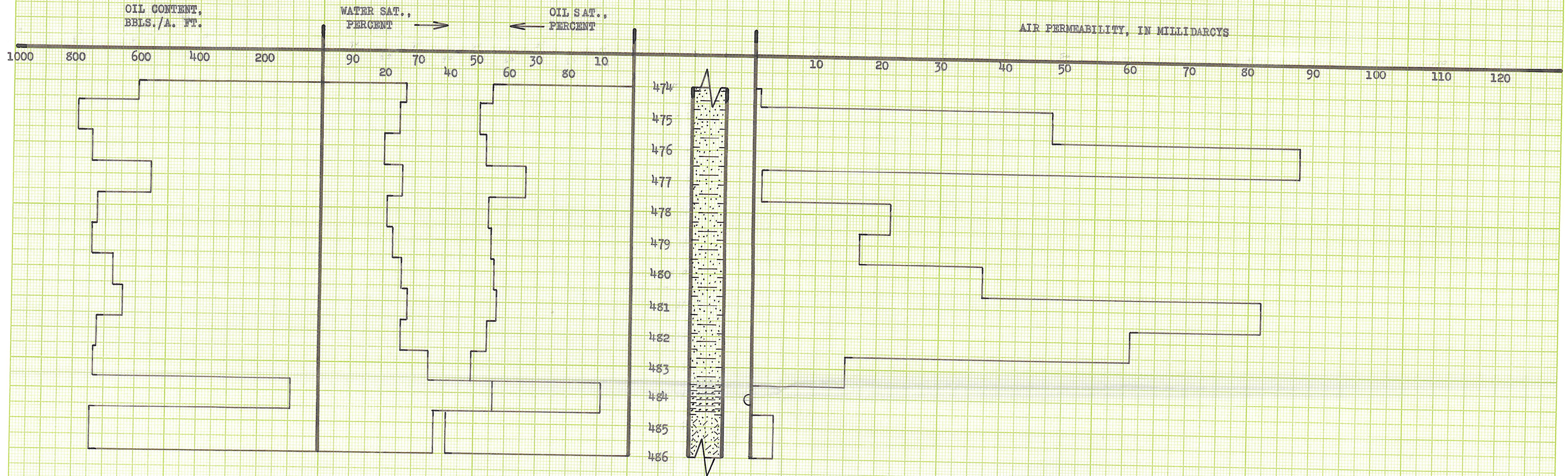
TABLE III

Company Stan Cannan Lease Blaine Well No. 6

Depth Interval, Feet	Feet of Core Analyzed	Average Permeability, Millidarcys	Permeability Capacity Ft. x Md.
474.0 - 486.0	12.0	34.2	376.53

Depth Interval, Feet	Feet of Core Analyzed	Average Percent Porosity	Average Percent Oil Saturation	Average Percent Water Saturation	Average Oil Content Bbl./A. Ft.	Total Oil Content Bbls./Acre
474.0 - 486.0	12.0	19.0	43.6	29.5	654	7,843

KEUFFEL & ESSER CO.
MADE IN U.S.A.



SHALY SANDSTONE
 CARBONACEOUS SANDSTONE
 LAMINATED SANDSTONE & SHALE
 IMPERMEABLE TO AIR

STAN CANNAN

BLAINE LEASE WELL NO. 6
NEOSHO COUNTY, KANSAS

DEPTH INTERVAL, FEET	FEET OF CORE ANALYZED	AVERAGE POROSITY, PERCENT	AVG. OIL SATURATION PERCENT	AVG. WATER SATURATION PERCENT	AVG. OIL CONTENT BBLs./A. FT.	TOTAL OIL CONTENT BBLs./ACRE	AVG. AIR PERMEABILITY, MILLIDARCYS
474.0 - 486.0	12.0	19.0	43.6	29.5	654	7,843	34.2

OILFIELD RESEARCH LABORATORIES
CHANUTE, KANSAS
MARCH, 1966