



WESTERN TESTING CO., INC.
FORMATION TESTING

TICKET NO 8704

P. O. BOX 1599 WICHITA, KANSAS 67201
PHONE (316) 262-5861

Elevation 1390 GS Formation Miss Eff. Pay Ft.

District 13 Augusta Date 12-2-85 Customer Order No.

COMPANY NAME Range Oil Company, LNC

ADDRESS 240 PAGE Court, 220 West Douglas Wichita Ks, 67202

LEASE AND WELL NO. Bing "A" #1 COUNTY Butler STATE Ks Sec. 16 Twp. 28S Rge. 7E

Mail Invoice To SAME No. Copies Requested Reg

Co. Name SAME #1 Bing "A" Address No. Copies Requested Reg

Formation Test No. 1 Interval Tested From 2667 ft. to 2672 ft. Total Depth 2672 ft.

Packer Depth 2662 ft. Size 6 3/4 in. Packer Depth ft. Size in.

Packer Depth 2662 ft. Size 6 3/4 in. Packer Depth ft. Size in.

Depth of Selective Zone Set

Top Recorder Depth (Inside) 2654 ft. Recorder Number 1134 Cap. 4475

Bottom Recorder Depth (Outside) 2669 ft. Recorder Number 13521 Cap. 4375

Below Straddle Recorder Depth ft. Recorder Number Cap.

Drilling Contractor RANGE Dely Co. Inc Rip #2 Drill Collar Length 205 I. D. 2.25 in.

Mud Type Chemical Viscosity 45 Weight Pipe Length I. D. in.

Weight 9.8 Water Loss 12.0 cc. Drill Pipe Length 2437 I. D. 3.8 in.

Chlorides 1600 P.P.M. Test Tool Length 25 ft. Tool Size 5 1/2 O.D. in.

Jars: Make Serial Number Anchor Length 5 ft. Size 5 1/2 O.D. in.

Did Well Flow? NO Reversed Out NO Surface Choke Size 3/4 in. Bottom Choke Size 3/4 in.

Main Hole Size 7 7/8 in. Tool Joint Size 4 1/2 x 4 in.

Blow: Weak steady Blow 134 in Water

FFP No Blow

Recovered 5 ft. of Mud with few oil specks

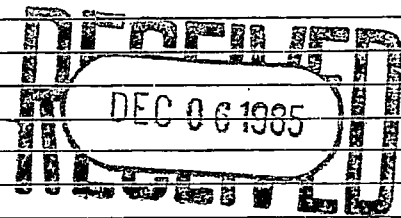
Recovered ft. of

Recovered ft. of

Recovered ft. of

Recovered ft. of

Chlorides P.P.M. Sample Jars used 1 Remarks:



Time On Location 7:45 12-2 A.M. P.M. Time Pick Up Tool 10:30 A.M. P.M. Time Off Location A.M. P.M.

Time Set Packer(s) 12:33 12-2 A.M. P.M. Time Started Off Bottom 2:33 A.M. P.M. Maximum Temperature 115°F

Initial Hydrostatic Pressure (A) 1375 P.S.I.

Initial Flow Period Minutes 30 (B) Plugging P.S.I. to (C) Plugging P.S.I.

Initial Closed In Period Minutes 30 (D) 21 P.S.I.

Final Flow Period Minutes 30 (E) 21 P.S.I. to (F) 21 P.S.I.

Final Closed In Period Minutes 30 (G) 21 P.S.I.

Final Hydrostatic Pressure (H) 1372 P.S.I.

COMPANY TERMS

Western Testing Co., Inc. shall not be liable for damages of any kind to the property or personnel of the one for whom a test is made or for any loss suffered or sustained directly or indirectly through the use of its equipment, of its statements or opinion concerning the results of any test. Tools lost or damaged in the hole shall be paid at cost by the party for whom the test is made.

All charges subject to 12% interest after 60 days from date of invoice. Any expense incurred for collection will be added to the original amount.

Test Approved By Stephen M. Keidle
Signature of Customer or his authorized representative

Western Representative Kevin E Zimmerman 2675

FIELD INVOICE

Open Hole Test	\$1250
Mistun	\$
Straddle Test	\$
Jars	\$
Selective Zone	\$
Safety Joint	\$
Standby	\$
Evaluation	\$
Extra Packer	\$
Circ. Sub.	\$
Mileage	\$
Fluid Sampler	\$
Extra Charts	\$
Insurance	\$
Telecopier	\$
TOTAL	\$

WESTERN TESTING CO., INC.
Pressure Data

Date 12-2-85 Test Ticket No. 8704
 Recorder No. 1134 Capacity 4475 Location _____ Ft.
 Clock No. _____ Elevation _____ Well Temperature 115 °F

Point	Pressure		Time Given	Time Computed
A Initial Hydrostatic Mud	<u>1386</u>	P.S.I.	<u>12:32 A</u>	<u>2:33 A</u>
B First Initial Flow Pressure	<u>19</u>	P.S.I.	<u>30</u>	Mins.
C First Final Flow Pressure	<u>19</u>	P.S.I.	<u>1</u>	Mins.
D Initial Closed-in Pressure	<u>19</u>	P.S.I.		Mins.
E Second Initial Flow Pressure	<u>19</u>	P.S.I.		Mins.
F Second Final Flow Pressure	<u>19</u>	P.S.I.		Mins.
G Final Closed-in Pressure	<u>19</u>	P.S.I.		Mins.
H Final Hydrostatic Mud	<u>1363</u>	P.S.I.		Mins.

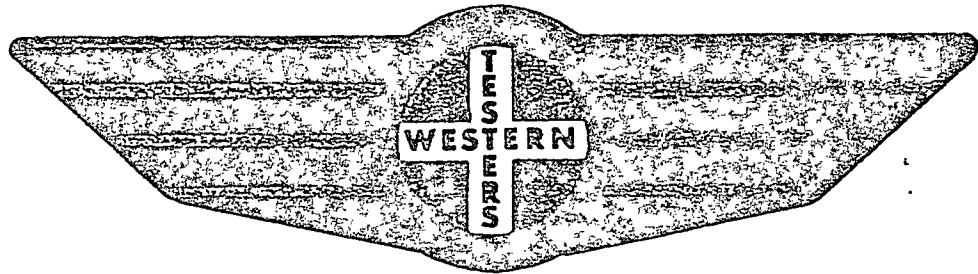
PRESSURE BREAKDOWN

First Flow Pressure		Initial Shut-In		Second Flow Pressure		Final Shut-In	
Breakdown: <u>7</u> Inc.		Breakdown: <u>11</u> Inc.		Breakdown: <u>7</u> Inc.		Breakdown: <u>11</u> Inc.	
of <u>5</u> mins. and a		of <u>3</u> mins. and a		of <u>5</u> mins. and a		of <u>3</u> mins. and a	
final inc. of <u>0</u> Min.		final inc. of <u>0</u> Min.		final inc. of <u>0</u> Min.		final inc. of <u>0</u> Min.	
Point Mins.	Press.	Point Minutes	Press.	Point Minutes	Press.	Point Minutes	Press.
P 1 0	<u>19</u>	0	<u>19</u>	0	<u>19</u>	0	<u>19</u>
P 2 5		3		5		3	
P 3 10		6		10		6	
P 4 15		9		15		9	
P 5 20		12		20		12	
P 6 25		15		25		15	
P 7 30	<u>19</u>	18		30	<u>19</u>	18	
P 8 35		21		35		21	
P 9 40		24		40		24	
P10 45		27		45		27	
P11 50		30	<u>19</u>	50		30	<u>19</u>
P12 55		33		55		33	
P13 60		36		60		36	
P14 65		39		65		39	
P15 70		42		70		42	
P16 75		45		75		45	
P17 80		48		80		48	
P18 85		51		85		51	
P19 90		54		90		54	
P20 95		57		95		57	
100		60		100		60	

FORMATION

TEST

REPORT



Home Office:

Wichita, Kansas 67201

P.O. Box 1599

Phone (316) 262-5861

WESTERN TESTING CO. INC.
SUBSURFACE PRESSURE SURVEY

DATE: 12/2/85 TICKET #8704
 CUSTOMER: RANGE OIL COMPANY INC. LEASE: BING "A"
 WELL: 1 TEST: 1 GEOLOGIST: KREIDLER
 ELEVATION (KB): 1395 FORMATION: MISSISSIPPI
 SECTION: 16 TOWNSHIP: 28S
 RANGE: 7E COUNTY: BUTLER STATE: KANSAS
 GAUGE SN #1134 RANGE: 4475 CLOCK: 12

INTERVAL TEST FROM: 2667 FT TO: 2672 FT TOTAL DEPTH: 2672 FT
 DEPTH OF SELECTIVE ZONE: FT
 PACKER DEPTH: 2662 FT SIZE: 6 3/4 IN PACKER DEPTH: 2667 FT SIZE: 6 3/4 IN
 PACKER DEPTH: FT SIZE: IN PACKER DEPTH: FT SIZE: IN

DRILLING CONTRACTOR: RANGE DRLG
 MUD TYPE: CHEMICAL VISCOSITY: 45
 WEIGHT: 9.8 WATER LOSS (CC): 12.0
 CHLORIDES (P.P.M.): 1600
 JARS - MAKE: SERIAL NUMBER:
 DID WELL FLOW? NO REVERSED OUT? NO
 DRILL COLLAR LENGTH: 205 FT I.D.: 2.25 IN
 WEIGHT PIPE LENGTH: FT I.D.: IN
 DRILL PIPE LENGTH: 2437 FT I.D.: 3.8 IN
 TEST TOOL LENGTH: 25 FT TOOL SIZE: 5 1/2 OD IN
 ANCHOR LENGTH: 5 FT SIZE: 5 1/2 OD IN
 SURFACE CHOKE SIZE: 3/4 IN BOTTOM CHOKE SIZE: 3/4 IN
 MAIN HOLE SIZE: 7 7/8 IN TOOL JOINT SIZE: 4 1/2 XH IN

BLOW: INITIAL FLOW PERIOD WEAK STEADY
 BLOW (1 3/4" IN WATER). FINAL
 FLOW PERIOD NO BLOW.

RECOVERED: 5 FT OF: MUD WITH A FEW OIL SPECKS.
 RECOVERED: FT OF:
 RECOVERED: FT OF:
 RECOVERED: FT OF:
 RECOVERED: FT OF:
 RECOVERED: FT OF:
 RECOVERED: FT OF:
 RECOVERED: FT OF:
 RECOVERED: FT OF:
 RECOVERED: FT OF:

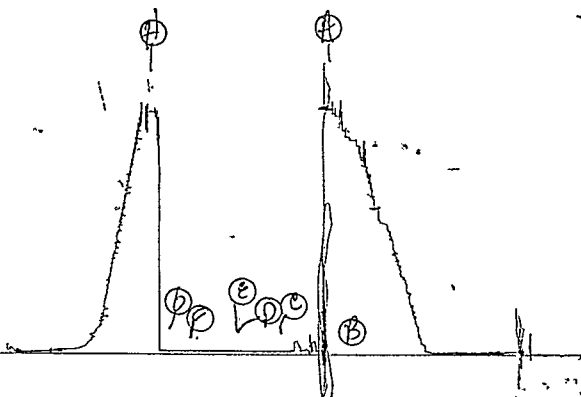
REMARKS:

TIME SET PACKER(S): 12:33 AM TIME STARTED OFF BOTTOM: 2:33 AM
 WELL TEMPERATURE: 115 °F
 INITIAL HYDROSTATIC PRESSURE: (A) 1386 PSI
 INITIAL FLOW PERIOD MIN: 30 (B) 19 PSI TO (C) 19 PSI
 INITIAL CLOSED IN PERIOD MIN: 30 (D) 19 PSI
 FINAL FLOW PERIOD MIN: 30 (E) 19 PSI TO (F) 19 PSI
 FINAL CLOSED IN PERIOD MIN: 30 (G) 19 PSI
 FINAL HYDROSTATIC PRESSURE (H) 1363 PSI

JKt # 8704

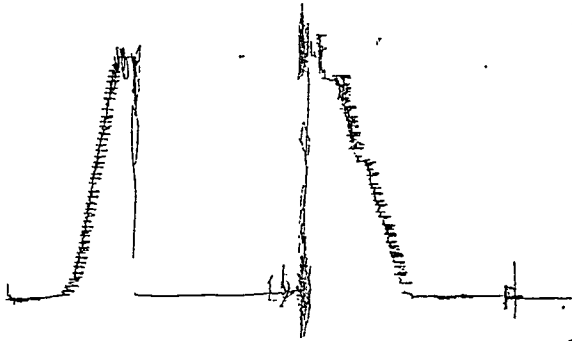
I

1134 D544 1-12# 8704



13521 OS #1 T12# 8704

Qty # 8704
0





WESTERN TESTING CO., INC.
FORMATION TESTING

TICKET No 8705

P. O. BOX 1599 PHONE (316) 262-5861
WICHITA, KANSAS 67201

Elevation 1390 65 Formation M.S.S Eff. Pay _____ Ft.

COMPANY NAME RANGE Oil Company Inc.
ADDRESS 240 PAGE Court. 220 W. Douglas Wichita Ks. 67202
LEASE AND WELL NO. Bing "A" #1 COUNTY Butler STATE KS Sec. 16 Twp. 28 S Rge. 7 E
District 13 Augusta Date 12-3-85 Customer Order No. _____

Mail Invoice To SAME Address _____ No. Copies Requested Req
Mail Charts To #1 Bing "A" #1 Address _____ No. Copies Requested Req

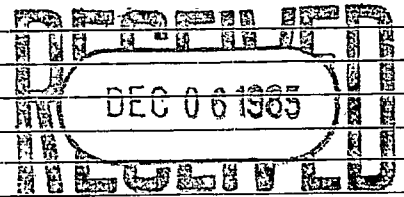
Formation Test No. 2 Interval Tested From 2667 ft. to 2675 ft. Total Depth 2675 ft.
Packer Depth 2662 ft. Size 6 3/4 in. Packer Depth _____ ft. Size _____ in.
Packer Depth 2667 ft. Size 6 3/4 in. Packer Depth _____ ft. Size _____ in.

Depth of Selective Zone Set _____
Top Recorder Depth (Inside) 2669 ft. Recorder Number 1134 Cap. 4475
Bottom Recorder Depth (Outside) 2672 ft. Recorder Number 13521 Cap. 4375
Below Straddle Recorder Depth _____ ft. Recorder Number _____ Cap. _____

Drilling Contractor RANGE DRILG Co. INC. Rig #2 Drill Collar Length 205 I. D. 2.25 in.
Mud Type Chemical Viscosity 48 Weight Pipe Length _____ I. D. _____ in.
Weight 9.7 Water Loss 12.0 cc. Drill Pipe Length 2442 I. D. 3.8 in.
Chlorides 1500 P.P.M. Test Tool Length 20 ft. Tool Size 5 1/2 0.0 in.
Jars: Make _____ Serial Number _____ Anchor Length 8 ft. Size 5 1/2 0.0 in.
Did Well Flow? NO Reversed Out NO Surface Choke Size 3/4 in. Bottom Choke Size 3/4 in.
Main Hole Size 7 7/8 in. Tool Joint Size 4 1/2 x H in.

Blow: FAIR Blow increasing to btm bucket 29 min
FAIR Blow increasing to btm bucket 25 min

Recovered 60 ft. of GASIN pipe
Recovered 10 ft. of FREE oil
Recovered 40 ft. of 0 CM 25% oil 75% Mud
Recovered 150 ft. of Water
Recovered _____ ft. of _____
Chlorides 50,000 P.P.M. Sample Jars used 4 Remarks: _____



Time On Location Stayed A.M. P.M. Time Pick Up Tool 9:30 A.M. P.M. Time Off Location 6:00 A.M. P.M.
Time Set Packer(s) 11:45 A.M. P.M. Time Started Off Bottom 2:45 A.M. P.M. Maximum Temperature 121°
Initial Hydrostatic Pressure (A) 1372 P.S.I.
Initial Flow Period Minutes 30 (B) 10 P.S.I. to (C) 21 P.S.I.
Initial Closed In Period Minutes 30 (D) 686 P.S.I.
Final Flow Period Minutes 60 (E) 97 P.S.I. to (F) 97 P.S.I.
Final Closed In Period Minutes 60 (G) 719 P.S.I.
Final Hydrostatic Pressure (H) 1361 P.S.I.

COMPANY TERMS

Western Testing Co., Inc. shall not be liable for damages of any kind to the property or personnel of the one for whom a test is made or for any loss suffered or sustained directly or indirectly through the use of its equipment, of its statements or opinion concerning the results of any test. Tools lost or damaged in the hole shall be paid at cost by the party for whom the test is made.

All charges subject to 12% interest after 60 days from date of invoice. Any expense incurred for collection will be added to the original amount.

Test Approved By [Signature]
Signature of Customer or his authorized representative

Western Representative [Signature]

Thank you!! 2625

FIELD INVOICE

Open Hole Test	\$ <u>350</u>
Misrun	\$ _____
Straddle Test	\$ _____
Jars	\$ _____
Selective Zone	\$ _____
Safety Joint	\$ _____
Standby	\$ _____
Evaluation	\$ _____
Extra Packer	\$ _____
Circ. Sub.	\$ _____
Mileage	\$ _____
Fluid Sampler	\$ _____
Extra Charts	\$ _____
Insurance	\$ _____
Telecopier	\$ _____
TOTAL	\$ _____

WESTERN TESTING CO., INC.
Pressure Data

Date 12-3-85 Test Ticket No. 8705
 Recorder No. 1134 Capacity 1475 Location _____ Ft.
 Clock No. _____ Elevation _____ Well Temperature 121 °F

Point	Pressure		Time Given	Time Computed
A Initial Hydrostatic Mud	<u>1372</u>	P.S.I.	<u>11:45 A.M.</u>	<u>2:45 P.M.</u>
B First Initial Flow Pressure	<u>3</u>	P.S.I.	<u>30</u> Mins.	<u>25</u> Mins.
C First Final Flow Pressure	<u>13</u>	P.S.I.	<u>30</u> Mins.	<u>30</u> Mins.
D Initial Closed-in Pressure	<u>679</u>	P.S.I.	<u>60</u> Mins.	<u>60</u> Mins.
E Second Initial Flow Pressure	<u>92</u>	P.S.I.	<u>60</u> Mins.	<u>69</u> Mins.
F Second Final Flow Pressure	<u>101</u>	P.S.I.		
G Final Closed-in Pressure	<u>718</u>	P.S.I.		
H Final Hydrostatic Mud	<u>1372</u>	P.S.I.		

PRESSURE BREAKDOWN

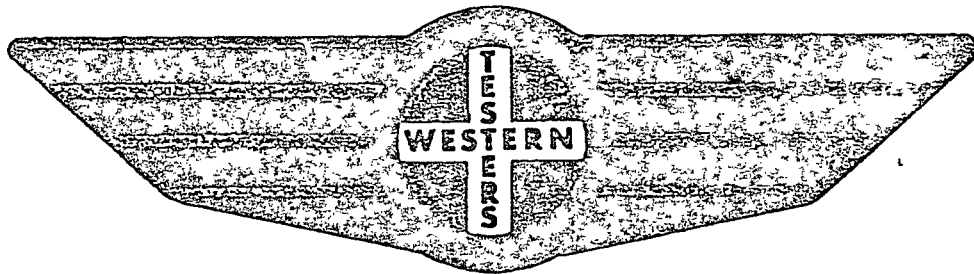
First Flow Pressure Breakdown: <u>6</u> Inc. of <u>5</u> mins. and a final inc. of <u>0</u> Min.	Initial Shut-In Breakdown: <u>11</u> Inc. of <u>3</u> mins. and a final inc. of <u>0</u> Min.	Second Flow Pressure Breakdown: <u>13</u> Inc. of <u>5</u> mins. and a final inc. of <u>0</u> Min.	Final Shut-In Breakdown: <u>24</u> Inc. of <u>3</u> mins. and a final inc. of <u>0</u> Min.
--	---	--	---

Point Mins.	Press.	Point Minutes	Press.	Point Minutes	Press.	Point Minutes	Press.
P 1 0	<u>3</u>	0	<u>13</u>	0	<u>92</u>	0	<u>101</u>
P 2 5	<u>8</u>	3	<u>188</u>	5	<u>1</u>	3	<u>164</u>
P 3 10	<u>11</u>	6	<u>372</u>	10	<u>1</u>	6	<u>292</u>
P 4 15	<u>13</u>	9	<u>472</u>	15	<u>1</u>	9	<u>389</u>
P 5 20	<u>13</u>	12	<u>546</u>	20	<u>1</u>	12	<u>457</u>
P 6 25	<u>13</u>	15	<u>584</u>	25	<u>92</u>	15	<u>513</u>
P 7 30		18	<u>618</u>	30	<u>94</u>	18	<u>548</u>
P 8 35		21	<u>640</u>	35	<u>96</u>	21	<u>566</u>
P 9 40		24	<u>658</u>	40	<u>98</u>	24	<u>590</u>
P10 45		27	<u>671</u>	45	<u>99</u>	27	<u>612</u>
P11 50		30	<u>679</u>	50	<u>100</u>	30	<u>626</u>
P12 55		33		55	<u>101</u>	33	<u>643</u>
P13 60		36		60	<u>101</u>	36	<u>654</u>
P14 65		39		65		39	<u>665</u>
P15 70		42		70		42	<u>672</u>
P16 75		45		75		45	<u>681</u>
P17 80		48		80		48	<u>688</u>
P18 85		51		85		51	<u>695</u>
P19 90		54		90		54	<u>701</u>
P20 95		57		95		57	<u>705</u>
100		60		100		60	<u>709</u>
						63	<u>713</u>
						64	<u>716</u>
						69	<u>718</u>

FORMATION

TEST

REPORT



Home Office:

Wichita, Kansas 67201

P.O. Box 1599

Phone (316) 262-5861

COMPANY RANGE OIL COMPANY, INC. LEASE & WELL NO. #1 BING 'A' SEC. 16 TWP. 28S RGE. 7E TEST NO. 2 DATE 12/3/00

WESTERN TESTING CO. INC.
SUBSURFACE PRESSURE SURVEY

DATE: 12/3/85

TICKET #8705

CUSTOMER: RANGE OIL COMPANY INC.

LEASE: BING "A"

WELL: 1

TEST: 2

GEOLOGIST: KREIDLER

ELEVATION (KB): 1395

FORMATION: MISSISSIPPI

SECTION: 16

TOWNSHIP: 28S

RANGE: 7E

COUNTY: BUTLER

STATE: KANSAS

GAUGE SN #1134

RANGE: 4475

CLOCK: 12

INTERVAL TEST FROM: 2667 FT TO: 2675 FT TOTAL DEPTH: 2675 FT
 DEPTH OF SELECTIVE ZONE:
 PACKER DEPTH: 2662 FT SIZE: 6 3/4 IN PACKER DEPTH: 2667 FT SIZE: 6 3/4 IN
 PACKER DEPTH: FT SIZE: IN PACKER DEPTH: FT SIZE: IN

DRILLING CONTRACTOR: RANGE DRLG
 MUD TYPE: CHEMICAL VISCOSITY: 48
 WEIGHT: 9.7 WATER LOSS (CC): 12.0
 CHLORIDES (P.P.M.): 1500

JARS - MAKE: SERIAL NUMBER:
 DID WELL FLOW? NO REVERSED OUT? NO
 DRILL COLLAR LENGTH: 205 FT I.D.: 2.25 IN
 WEIGHT PIPE LENGTH: FT I.D.: IN
 DRILL PIPE LENGTH: 2442 FT I.D.: 3.8 IN
 TEST TOOL LENGTH: 20 FT TOOL SIZE: 5 1/2 OD IN
 ANCHOR LENGTH: 8 FT SIZE: 5 1/2 OD IN
 SURFACE CHOKE SIZE: 3/4 IN BOTTOM CHOKE SIZE: 3/4 IN
 MAIN HOLE SIZE: 7 7/8 IN TOOL JOINT SIZE: 4 1/2 XH IN

BLOW: INITIAL FLOW PERIOD FAIR BLOW INCREASING
 TO BOTTOM OF BUCKET IN 29 MINUTES.
 FINAL FLOW PERIOD FAIR BLOW INCREASING
 TO BOTTOM OF BUCKET IN 25 MINUTES.

RECOVERED: 60 FT OF: GAS ABOVE FLUID.
 RECOVERED: 10 FT OF: FREE OIL.
 RECOVERED: 40 FT OF: OIL CUT MUD (25% OIL; 75% MUD).
 RECOVERED: 150 FT OF: MUDDY WATER.
 RECOVERED: FT OF: CHLORIDES 50000 PPM.
 RECOVERED: FT OF:
 RECOVERED: FT OF:
 RECOVERED: FT OF:
 RECOVERED: FT OF:

REMARKS:

TIME SET PACKER(S): 11:45 AM

TIME STARTED OFF BOTTOM: 2:45 PM

WELL TEMPERATURE: 121 °F

INITIAL HYDROSTATIC PRESSURE:

(A) 1372 PSI

INITIAL FLOW PERIOD MIN: 25

(B) 3 PSI TO (C) 13 PSI

INITIAL CLOSED IN PERIOD MIN: 30

(D) 679 PSI

FINAL FLOW PERIOD MIN: 60

(E) 92 PSI TO (F) 101 PSI

FINAL CLOSED IN PERIOD MIN: 69

(G) 718 PSI

FINAL HYDROSTATIC PRESSURE

(H) 1372 PSI

12551 5028 #11L. 8 #450

Plt # 8905

0



WPA # 8705

I

TR# 8785 DST# 2 1134

