

Company Wiley R. Ash, Sr. Lease & Well No. Mollett #3
 Elevation 1354 Ground Level Formation Simpson Effective Pay -- Ft. Ticket No. 13214
 Date 4/26/82 Sec. 9 Twp. 28S Range 2E County Sedgwick State Kansas
 Test Approved by Mike Nelson Western Representative Robert Davis

Formation Test No. 1 Interval Tested from 3301 ft. to 3339 ft. Total Depth 3339 ft.
 Packer Depth 3301 ft. Size 6 3/4 in. Packer Depth - ft. Size - in.
 Packer Depth 3296 ft. Size 6 3/4 in. Packer Depth - ft. Size - in.

Depth of Selective Zone Set -
 Top Recorder Depth (Inside) 3306 ft. Recorder Number 13268 Cap. 4225
 Bottom Recorder Depth (Outside) 3310 ft. Recorder Number 11019 Cap. 4500
 Below Straddle Recorder Depth - ft. Recorder Number - Cap. -

Drilling Contractor Reynolds Drlg. Rig #3 Drill Collar Length 318 I. D. 2 1/4 in.
 Mud Type chemical Viscosity 41 Weight Pipe Length - I. D. - in.
 Weight 9.8 Water Loss 11.6 cc. Drill Pipe Length 2961 I. D. 3.8 in.
 Chlorides 1,300 P.P.M. Test Tool Length 22 ft. Tool Size 5 1/2 in.
 Jars: Make - Serial Number - Anchor Length 38 ft. Size 5 1/2 in.
 Did Well Flow? No Reversed Out No Surface Choke Size 3/4 in. Bottom Choke Size 3/4 in.
 Main Hole Size 7 7/8 in. Tool Joint Size 4 1/2 XH in.

Blow: Weak, died ten minutes into initial flow period. Flushed tool five minutes into final flow period - no blow.

Recovered 5 ft. of oil spotted drilling mud with a show of free oil
 Recovered ft. of
 Recovered ft. of
 Recovered ft. of
 Recovered ft. of

Remarks:

Time Set Packer(s)	8:15	A.M.	Time Started Off Bottom	10:30	A.M.	Maximum Temperature	109°
Initial Hydrostatic Pressure				1669	P.S.I.		
Initial Flow Period		Minutes	30	38	P.S.I. to (C)	38	P.S.I.
Initial Closed In Period		Minutes	45	1169	P.S.I.		
Final Flow Period		Minutes	35	89	P.S.I. to (F)	52	P.S.I.
Final Closed In Period		Minutes	33	1074	P.S.I.		
Final Hydrostatic Pressure				1669	P.S.I.		

WESTERN TESTING CO., INC.
Pressure Data

Date 4/26/82 Test Ticket No. 13214
 Recorder No. 13268 Capacity 4225 Location 3306 Ft.
 Clock No. -- Elevation 1354 Ground Level Well Temperature 109 °F

Point	Pressure		Time Given	Time Computed
A Initial Hydrostatic Mud	<u>1669</u>	P.S.I.	<u>8:15P</u>	<u>M</u>
B First Initial Flow Pressure	<u>38</u>	P.S.I.	<u>30</u>	<u>30</u> Mins.
C First Final Flow Pressure	<u>38</u>	P.S.I.	<u>45</u>	<u>45</u> Mins.
D Initial Closed-in Pressure	<u>1169</u>	P.S.I.	<u>30</u>	<u>35</u> Mins.
E Second Initial Flow Pressure	<u>89</u>	P.S.I.	<u>30</u>	<u>33</u> Mins.
F Second Final Flow Pressure	<u>52</u>	P.S.I.		
G Final Closed-in Pressure	<u>1074</u>	P.S.I.		
H Final Hydrostatic Mud	<u>1669</u>	P.S.I.		

PRESSURE BREAKDOWN

First Flow Pressure
Breakdown: 6 Inc.
of 5 mins. and a
final inc. of 0 Min.

Initial Shut-In
Breakdown: 15 Inc.
of 3 mins. and a
final inc. of 0 Min.

Second Flow Pressure
Breakdown: 7 Inc.
of 5 mins. and a
final inc. of 0 Min.

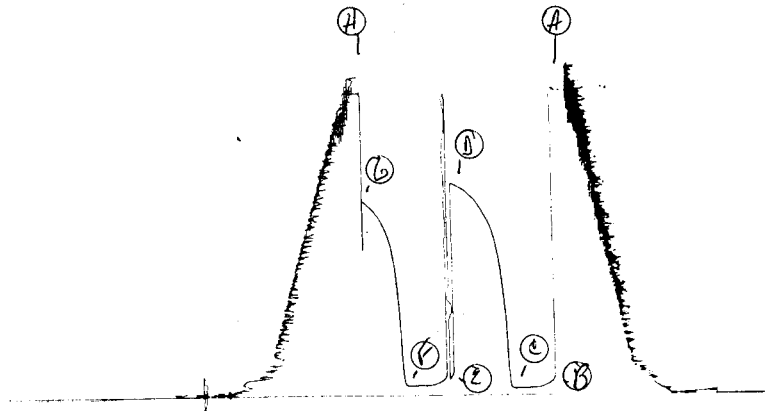
Final Shut-In
Breakdown: 11 Inc.
of 3 mins. and a
final inc. of 0 Min.

Point	Press.	Point	Press.	Point	Press.	Point	Press.
Mins.		Minutes		Minutes		Minutes	
P 1 <u>0</u>	<u>38</u>	<u>0</u>	<u>38</u>	<u>0</u>	<u>89</u>	<u>0</u>	<u>52</u>
P 2 <u>5</u>	<u>38</u>	<u>3</u>	<u>158</u>	<u>5</u>	<u>FLUSHED TOOL</u>	<u>3</u>	<u>184</u>
P 3 <u>10</u>	<u>38</u>	<u>6</u>	<u>470</u>	<u>10</u>	<u>68</u>	<u>6</u>	<u>487</u>
P 4 <u>15</u>	<u>38</u>	<u>9</u>	<u>685</u>	<u>15</u>	<u>57</u>	<u>9</u>	<u>689</u>
P 5 <u>20</u>	<u>38</u>	<u>12</u>	<u>819</u>	<u>20</u>	<u>53</u>	<u>12</u>	<u>817</u>
P 6 <u>25</u>	<u>38</u>	<u>15</u>	<u>904</u>	<u>25</u>	<u>52</u>	<u>15</u>	<u>891</u>
P 7 <u>30</u>	<u>38</u>	<u>18</u>	<u>962</u>	<u>30</u>	<u>52</u>	<u>18</u>	<u>943</u>
P 8 _____		<u>21</u>	<u>1002</u>	<u>35</u>	<u>52</u>	<u>21</u>	<u>987</u>
P 9 _____		<u>24</u>	<u>1040</u>			<u>24</u>	<u>1016</u>
P10 _____		<u>27</u>	<u>1072</u>			<u>27</u>	<u>1038</u>
P11 _____		<u>30</u>	<u>1095</u>			<u>30</u>	<u>1061</u>
P12 _____		<u>33</u>	<u>1118</u>			<u>33</u>	<u>1074</u>
P13 _____		<u>36</u>	<u>1135</u>				
P14 _____		<u>39</u>	<u>1148</u>				
P15 _____		<u>42</u>	<u>1160</u>				
P16 _____		<u>45</u>	<u>1169</u>				
P17 _____							
P18 _____							
P19 _____							
P20 _____							

HA # 13214

I

07/20/1



WESTERN TESTING CO., INC.

Pressure Data

Date: 4-26 Test Ticket No. 13214
 Recorder No. 13268 Capacity 4225 Location 3306 F
 Clock No. --- Elevation 1354 AL Well Temperature 109

Point	Pressure	Open Tool	Time Given	Time Computed
A Initial Hydrostatic Mud	<u>1669</u> P.S.I.		<u>8:15 P</u>	
B First Initial Flow Pressure	<u>38</u> P.S.I.	First Flow Pressure	<u>30</u> Mins.	<u>30</u> Mins.
C First Final Flow Pressure	<u>38</u> P.S.I.	Initial Closed-in Pressure	<u>45</u> Mins.	<u>45</u> Mins.
D Initial Closed-in Pressure	<u>1169</u> P.S.I.	Second Flow Pressure	<u>30</u> Mins.	<u>35</u> Mins.
E Second Initial Flow Pressure	<u>89</u> P.S.I.	Final Closed-in Pressure	<u>30</u> Mins.	<u>33</u> Mins.
F Second Final Flow Pressure	<u>52</u> P.S.I.			
G Final Closed-in Pressure	<u>1074</u> P.S.I.			
H Final Hydrostatic Mud	<u>1669</u> P.S.I.			

PRESSURE BREAKDOWN

First Flow Pressure		Initial Shut-In		Second Flow Pressure		Final Shut-In	
Breakdown: <u>6</u> Inc.		Breakdown: <u>15</u> Inc.		Breakdown: <u>7</u> Inc.		Breakdown: <u>11</u> Inc.	
of <u>5</u> mins. and a		of <u>3</u> mins. and a		of <u>5</u> mins. and a		of <u>3</u> mins. and a	
final inc. of <u>0</u> Min.		final inc. of <u>0</u> Min.		final inc. of <u>0</u> Min.		final inc. of <u>0</u> Min.	
Point Mins.	Press.	Point Minutes	Press.	Point Minutes	Press.	Point Minutes	Press.
P 1 <u>0</u>	<u>38</u>	<u>0</u>	<u>38</u>	<u>0</u>	<u>89</u>	<u>0</u>	<u>52</u>
P 2 <u>5</u>		<u>3</u>	<u>158</u>	<u>5</u>	<u>Flushed Tool</u>	<u>3</u>	<u>184</u>
P 3 <u>10</u>		<u>6</u>	<u>470</u>	<u>10</u>	<u>68</u>	<u>6</u>	<u>487</u>
P 4 <u>15</u>		<u>9</u>	<u>685</u>	<u>15</u>	<u>57</u>	<u>9</u>	<u>689</u>
P 5 <u>20</u>		<u>12</u>	<u>819</u>	<u>20</u>	<u>53</u>	<u>12</u>	<u>817</u>
P 6 <u>25</u>		<u>15</u>	<u>904</u>	<u>25</u>	<u>52</u>	<u>15</u>	<u>891</u>
P 7 <u>30</u>	<u>38</u>	<u>18</u>	<u>962</u>	<u>30</u>	<u>52</u>	<u>18</u>	<u>943</u>
P 8 <u>35</u>		<u>21</u>	<u>1002</u>	<u>35</u>	<u>52</u>	<u>21</u>	<u>987</u>
P 9 <u>40</u>		<u>24</u>	<u>1040</u>	<u>40</u>		<u>24</u>	<u>1016</u>
P10 <u>45</u>		<u>27</u>	<u>1072</u>	<u>45</u>		<u>27</u>	<u>1038</u>
P11 <u>50</u>		<u>30</u>	<u>1095</u>	<u>50</u>		<u>30</u>	<u>1061</u>
P12 <u>55</u>		<u>33</u>	<u>1118</u>	<u>55</u>		<u>33</u>	<u>1074</u>
P13 <u>60</u>		<u>36</u>	<u>1135</u>	<u>60</u>		<u>36</u>	
P14		<u>39</u>	<u>1148</u>	<u>65</u>		<u>39</u>	
P15		<u>42</u>	<u>1160</u>	<u>70</u>		<u>42</u>	
P16		<u>45</u>	<u>1169</u>	<u>75</u>		<u>45</u>	
P17		<u>48</u>		<u>80</u>		<u>48</u>	
P18		<u>51</u>		<u>85</u>		<u>51</u>	
P19		<u>54</u>		<u>90</u>		<u>54</u>	
P20		<u>57</u>				<u>57</u>	
		<u>60</u>				<u>60</u>	