

WESTERN TESTING CO. -INC.  
SUBSURFACE PRESSURE SURVEY

DATE: 8/17/83  
CUSTOMER: CAMIO OIL COMPANY  
WELL: 1 TEST: 1  
ELEVATION (KB): 1239 FORMATION: MISSISSIPPI CHERT  
SECTION: 26 TOWNSHIP: 29S  
RANGE: 1E COUNTY: SEDGWICK STATE: KANSAS  
GAUGE SN #13265 RANGE: 3975 CLOCK: 12

INTERVAL TEST FROM: 3191 FT TO: 3240 FT TOTAL DEPTH: 3240 FT  
DEPTH OF SELECTIVE ZONE: FT  
PACKER DEPTH: 3191 FT SIZE: 6 3/4 IN PACKER DEPTH: FT SIZE: IN  
PACKER DEPTH: FT SIZE: IN PACKER DEPTH: FT SIZE: IN

DRILLING CONTRACTOR: MCALLISTER  
MUD TYPE: CHEMICAL VISCOSITY: 45  
WEIGHT: 9.7 WATER LOSS (CC): 12.0  
CHLORIDES (P.P.M.): 2300  
JARS - MAKE: SERIAL NUMBER:  
DID WELL FLOW? REVERSED OUT?  
DRILL COLLAR LENGTH: 310 FT I.D.: 2 1/4 IN  
WEIGHT PIPE LENGTH: FT I.D.: IN  
DRILL PIPE LENGTH: 2879 FT I.D.: 3.8 IN  
TEST TOOL LENGTH: 15 FT TOOL SIZE: 5 1/2 IN  
ANCHOR LENGTH: 49 FT SIZE: 5 1/2 IN  
SURFACE CHOKE SIZE: 3/4 IN BOTTOM CHOKE SIZE: 3/4 IN  
MAIN HOLE SIZE: 7 7/8 IN TOOL JOINT SIZE: 4 1/2 XH IN

BLOW:

RECOVERED: FT OF:  
RECOVERED: FT OF:  
RECOVERED: FT OF:  
RECOVERED: FT OF:  
RECOVERED: FT OF:  
RECOVERED: FT OF:  
RECOVERED: FT OF:  
RECOVERED: FT OF:  
RECOVERED: FT OF:  
RECOVERED: FT OF:  
RECOVERED: FT OF:

REMARKS: MISRUN.  
PACKER SEAT FAILURE.

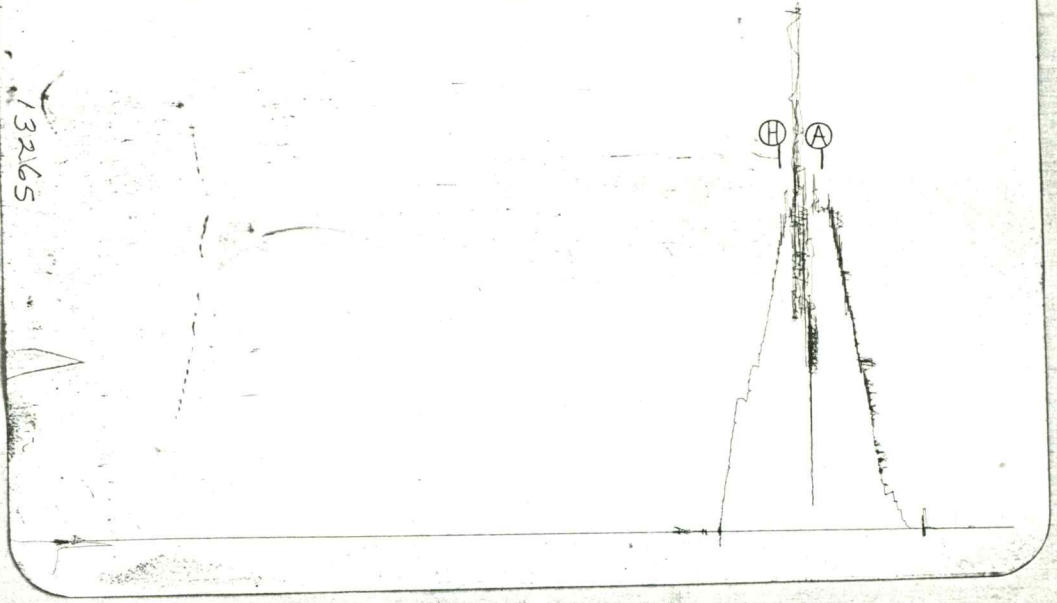
TIME SET PACKER(S): 5:10 PM TIME STARTED OFF BOTTOM:  
WELL TEMPERATURE: 0 °F  
INITIAL HYDROSTATIC PRESSURE: (A) 1639 PSI  
INITIAL FLOW PERIOD MIN: 0 (B) 0 PSI TO (C) 0 PSI  
INITIAL CLOSED IN PERIOD MIN: 0 (D) 0 PSI  
FINAL FLOW PERIOD MIN: 0 (E) 0 PSI TO (F) 0 PSI  
FINAL CLOSED IN PERIOD MIN: 0 (G) 0 PSI  
FINAL HYDROSTATIC PRESSURE (H) 1639 PSI



TKT # 2315

I

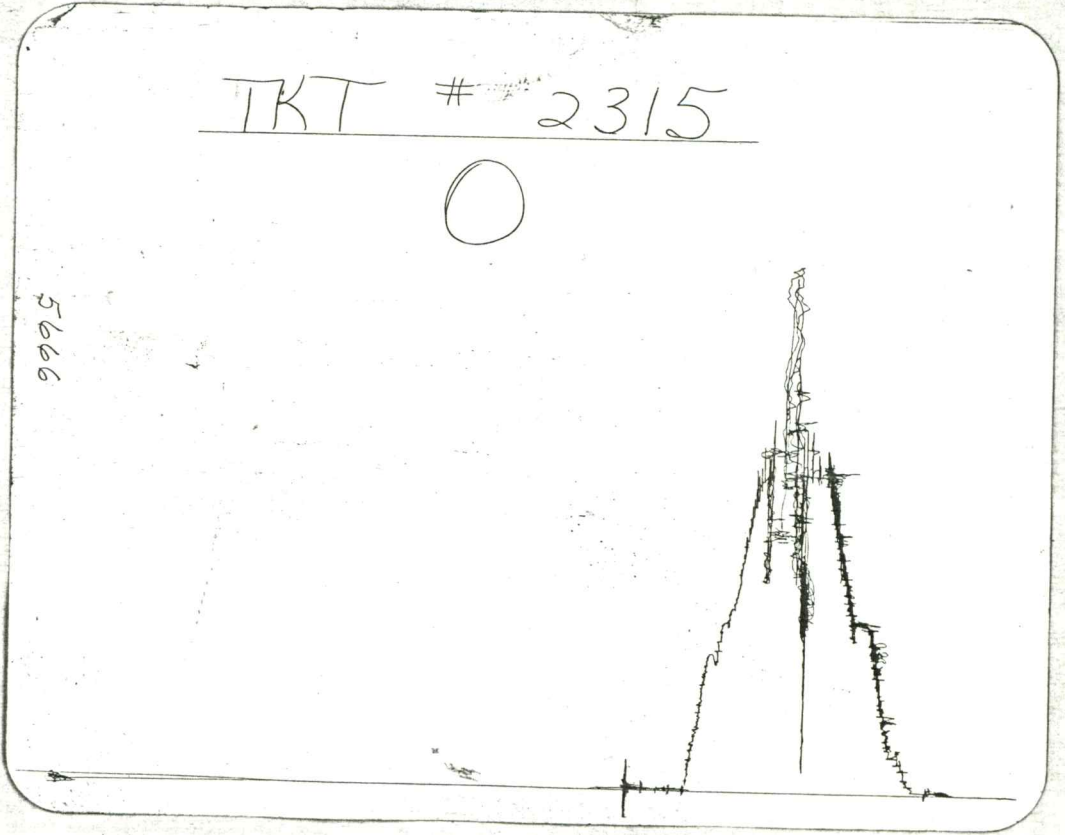
13265



TKT # 2315

O

5666



WESTERN TESTING CO. INC.  
SUBSURFACE PRESSURE SURVEY

DATE: 8/18/83 TICKET #2316  
CUSTOMER: CAMIO OIL COMPANY LEASE: GOSNEY  
WELL: 1 TEST: 2 GEOLOGIST: BAKER  
ELEVATION (KB): 1239 FORMATION: MISSISSIPPI CHERT  
SECTION: 26 TOWNSHIP: 29S  
RANGE: 1E COUNTY: SEDGWICK STATE: KANSAS  
GAUGE SN #13265 RANGE: 3975 CLOCK: 12

INTERVAL TEST FROM: 3221 FT TO: 3240 FT TOTAL DEPTH: 3240 FT  
DEPTH OF SELECTIVE ZONE: FT  
PACKER DEPTH: 3216 FT SIZE: 6 3/4 IN PACKER DEPTH: 3221 FT SIZE: 6 3/4 IN  
PACKER DEPTH: FT SIZE: IN PACKER DEPTH: FT SIZE: IN

DRILLING CONTRACTOR: MCALLISTER  
MUD TYPE: CHEMICAL VISCOSITY: 45  
WEIGHT: 9.7 WATER LOSS (CC): 12.0  
CHLORIDES (P.P.M.): 2300  
JARS - MAKE: SERIAL NUMBER:  
DID WELL FLOW? NO REVERSED OUT? NO  
DRILL COLLAR LENGTH: 310 FT I.D.: 2 1/4 IN  
WEIGHT PIPE LENGTH: FT I.D.: IN  
DRILL PIPE LENGTH: 2899 FT I.D.: 3.8 IN  
TEST TOOL LENGTH: 20 FT TOOL SIZE: 5 1/2 IN  
ANCHOR LENGTH: 19 FT SIZE: 5 1/2 IN  
SURFACE CHOKE SIZE: 3/4 IN BOTTOM CHOKE SIZE: 3/4 IN  
MAIN HOLE SIZE: 7 7/8 IN TOOL JOINT SIZE: 4 1/2 XH IN

BLOW: WEAK TO FAIR BLOW ( 2 TO 3 INCHES )  
THROUGHOUT TEST.

RECOVERED: 1 FT OF: HEAVY OIL CUT MUD  
RECOVERED: FT OF: 70% OIL - 42 SPEC. GRAV.; 30% MUD  
RECOVERED: 310 FT OF: MUDDY SALTWATER  
RECOVERED: FT OF:  
RECOVERED: FT OF:  
RECOVERED: FT OF:  
RECOVERED: FT OF:  
RECOVERED: FT OF:  
RECOVERED: FT OF:  
RECOVERED: FT OF:

REMARKS: CHLORIDES 102000 PPM

TIME SET PACKER(S): 12:45 AM TIME STARTED OFF BOTTOM: 4:45 AM  
WELL TEMPERATURE: 111 °F  
INITIAL HYDROSTATIC PRESSURE: (A) 1672 PSI  
INITIAL FLOW PERIOD MIN: 30 (B) 75 PSI TO (C) 59 PSI  
INITIAL CLOSED IN PERIOD MIN: 30 (D) 1218 PSI  
FINAL FLOW PERIOD MIN: 90 (E) 99 PSI TO (F) 164 PSI  
FINAL CLOSED IN PERIOD MIN: 90 (G) 1258 PSI  
FINAL HYDROSTATIC PRESSURE (H) 1622 PSI





2316

TKT # 2316

I

