



WESTERN TESTING CO., INC.
FORMATION TESTING

TICKET NO 8078

P. O. BOX 1599 WICHITA, KANSAS 67201

Elevation 1287 KB Formation Miss Eff. Pay Ft.

District 13 Augusta Date 3-5-85 Customer Order No.

COMPANY NAME Petro Kansas Oil Producers, Inc.

ADDRESS 9415 E. Harry Suite #107 Wichita, Ks. 67207

LEASE AND WELL NO. Howell "D" #1 COUNTY SEDGWICK STATE KS Sec. 7 Twp. 29S Rge. 1E

Mail Invoice To Same No. Copies Requested 1

Mail Charts To #1 D'Howell Co. Name Address Same No. Copies Requested 5

Formation Test No. 1 Interval Tested From 3285 ft. to 3311 ft. Total Depth 3311 ft.
Packer Depth 3280 ft. Size 6.75 in. Packer Depth = ft. Size in.
Packer Depth 3285 ft. Size 6.75 in. Packer Depth = ft. Size in.

Depth of Selective Zone Set
Top Recorder Depth (Inside) 3302 ft. Recorder Number 5666 Cap. 3950
Bottom Recorder Depth (Outside) 3306 ft. Recorder Number 13265 Cap. 3975
Below Saddle Recorder Depth ft. Recorder Number Cap.

Drilling Contractor EDCO #6 Drill Collar Length 236 I. D. 2.25 in.
Mud Type Chem Viscosity 48 Weight Pipe Length I. D. in.
Weight 10.0 Water Loss 11.2 cc. Drill Pipe Length 3024 I. D. 3.8 in.
Chlorides 1600 P.P.M. Test Tool Length 25 ft. Tool Size 5.5 in.
Jars: Make Serial Number Anchor Length 2.6 ft. Size 5.5 in.
Did Well Flow? YES Reversed Out NO Surface Choke Size .75 in. Bottom Choke Size .75 in.
Main Hole Size 7 7/8 in. Tool Joint Size 4 1/2 XH in.

Blow: STRONG GAS to Surface 8 min, 288 MCK

Recovered 240 ft. of Gas cut Muddy water
Recovered ft. of
Recovered ft. of
Recovered ft. of
Recovered ft. of
Chlorides 89,000 P.P.M. Sample Jars used 3 Remarks:

Time On Location 2:45 P.M. Time Pick Up Tool 4:45 P.M. Time Off Location 11:30 P.M.
Time Set Packer(s) 6:00 P.M. Time Started Off Bottom 9:00 P.M. Maximum Temperature 105 F
Initial Hydrostatic Pressure (A) 1725 P.S.I.
Initial Flow Period 30 Minutes (B) 120 P.S.I. to (C) 140 P.S.I.
Initial Closed In Period 60 Minutes (D) 1665 P.S.I.
Final Flow Period 30 Minutes (E) 155 P.S.I. to (F) 130 P.S.I.
Final Closed In Period 60 Minutes (G) 1665 P.S.I.
Final Hydrostatic Pressure (H) 1695 P.S.I.

RECEIVED MAR. 07 1985

FIELD INVOICE
Open Hole Test \$ 350
Misrun \$
Straddle Test \$
Jars \$
Selective Zone \$
Safety Joint \$
Standby \$
Evaluation \$
Extra Packer \$
Circ. Sub. \$
Mileage \$
Fluid Sampler \$
Extra Charts \$

COMPANY TERMS
Western Testing Co., Inc. shall not be liable for damages of any kind to the property or personnel of the one for whom a test is made or for any loss suffered or sustained directly or indirectly through the use of its equipment, of its statements or opinion concerning the results of any test. Tools lost or damaged in the hole shall be paid at cost by the party for whom the test is made.
All charges subject to 12% interest after 60 days from date of invoice. Any expense incurred for collection will be added to the original amount.
Test Approved By Wesley Hansen Signature of Customer or his authorized representative
Western Representative Allen Edgington 0525



Nº 3633

GAS FLOW REPORT

Date 3-5-85 Ticket 8078 Company PETRO KS
 Well Name and No. #1 HOWELL "O" Dst No. 1 Interval Tested 3285-3311
 County SG State KS Sec. 7 Twp. 29 S Rg. 1 E

Time Gauge in Min.	P.S.I. on Merla Orifice Well Tester	Size of Orifice	P.S.I. on Pitot Tester	P.S.I. on Side Static Tester	Description of Flow
PRE FLOW					
<u>15</u>	<u>10</u>	<u>3/4</u>			<u>GAS TO SURFACE</u> <u>259000 MCF/D</u>
<u>30</u>	<u>13</u>	<u>3/4</u>			<u>303000 MCF/D</u>

Time Gauge in Min.	P.S.I. on Merla Orifice Well Tester	Size of Orifice	P.S.I. on Pitot Tester	P.S.I. on Side Static Tester	Description of Flow
SECOND FLOW					
<u>40</u>	<u>14</u>	<u>3/4</u>			<u>317000 MCF/D</u>
<u>50</u>	<u>12</u>	<u>"</u>			<u>288000 "</u>
<u>60</u>	<u>"</u>	<u>"</u>			<u>"</u>

GAS BOTTLE

Serial No. _____ Date Bottle Filled 3-5-85 Date to be Invoiced _____

Requisition and Provisions for high pressure stainless steel gas bottles. Western Testing Co., Inc. shall not be liable for damage of any kind to property or personnel of the one whom gas bottle is filled or for any loss suffered or sustained directly or indirectly through the use of these bottles. By signing of this ticket showing receipt of a gas testing bottle, the undersigned agrees for himself and as agent for operator, to return this bottle to Western Testing Co., Inc. within thirty (30) days free of charge, or be invoiced in the amount of \$75.00 (total charge). Should valve or seal plug be missing or damaged beyond repair, operator shall be invoiced for repairs at our invoiced price.

All charges subject to 1 1/2% per month, equal to 18% interest per annum after 30 days from date of invoice. Any expense incurred for collection will be added to the original amount.

COMPANY'S NAME PETRO KS.
 Authorized by X Wesley D. Hansen

WESTERN TESTING CO., INC.

Pressure Data

Date 3/15/85 Test Ticket No. 8078
 Recorder No. 516160 Capacity _____ Location _____
 Clock No. _____ Elevation _____ Well Temperature _____

Point	Pressure	Open Tool	Time Given	Time Computed
A. Initial Hydrostatic Mud	<u>1729</u> P.S.I.	_____ M		
B. First Initial Flow Pressure	<u>124</u> P.S.I.	First Flow Pressure	<u>30</u> Mins.	_____ Mir
C. First Final Flow Pressure	<u>140</u> P.S.I.	Initial Closed-in Pressure	<u>60</u> Mins.	_____ Mir
D. Initial Closed-in Pressure	<u>1667</u> P.S.I.	Second Flow Pressure	<u>30</u> Mins.	_____ Mir
E. Second Initial Flow Pressure	<u>130</u> P.S.I.	Final Closed-in Pressure	<u>60</u> Mins.	_____ Mir
F. Second Final Flow Pressure	<u>130</u> P.S.I.			
G. Final Closed-in Pressure	<u>1653</u> P.S.I.			
H. Final Hydrostatic Mud	<u>1685</u> P.S.I.			

PRESSURE BREAKDOWN

First Flow Pressure
 Breakdown: 7 Inc.
 of 5 mins. and a
 final inc. of 0 Min.

Initial Shut-In
 Breakdown: 22 Inc.
 of 3 mins. and a
 final inc. of 0 Min.

Second Flow Pressure
 Breakdown: 7 Inc.
 of 5 mins. and a
 final inc. of 0 Min.

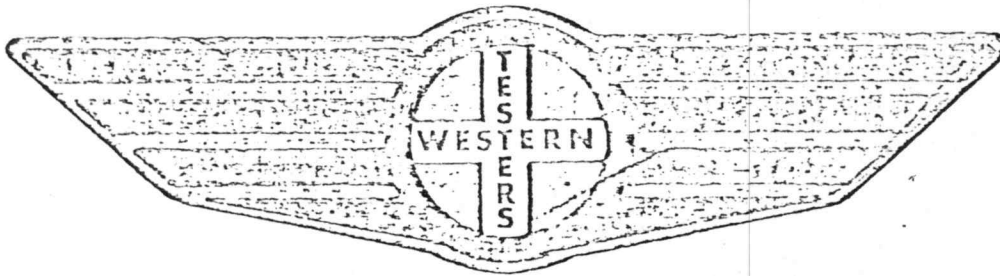
Final Shut-In
 Breakdown: 22 Inc.
 of 3 mins. and a
 final inc. of 0 Min.

Point Mins.	Press.	Point Minutes	Press.	Point Minutes	Press.	Point Minutes	Press.
P 1 0	<u>124</u>	0	<u>140</u>	0	<u>130</u>	0	<u>130</u>
P 2 5	<u>124</u>	3	<u>1023</u>	5		3	<u>701</u>
P 3 10	<u>157</u>	6	<u>1133</u>	10		6	<u>1147</u>
P 4 15	<u>143</u>	9	<u>1406</u>	15		9	<u>1402</u>
P 5 20	<u>140</u>	12	<u>1499</u>	20		12	<u>1484</u>
P 6 25	<u>140</u>	15	<u>1549</u>	25		15	<u>1532</u>
P 7 30	<u>140</u>	18	<u>1580</u>	30	<u>130</u>	18	<u>1560</u>
P 8 35		21	<u>1602</u>	35		21	<u>1578</u>
P 9 40		24	<u>1616</u>	40		24	<u>1592</u>
P10 45		27	<u>1625</u>	45		27	<u>1604</u>
P11 50		30	<u>1632</u>	50		30	<u>1612</u>
P12 55		33	<u>1637</u>	55		33	<u>1620</u>
P13 60		36	<u>1642</u>	60		36	<u>1624</u>
P14 65		39	<u>1647</u>	65		39	<u>1628</u>
P15 70		42	<u>1651</u>	70		42	<u>1630</u>
P16 75		45	<u>1655</u>	75		45	<u>1636</u>
P17 80		48	<u>1658</u>	80		48	<u>1639</u>
P18 85		51	<u>1661</u>	85		51	<u>1642</u>
P19 90		54	<u>1663</u>	90		54	<u>1644</u>
P20 95		57	<u>1665</u>	95		57	<u>1648</u>
100		60	<u>1660</u>	100		60	<u>1651</u>
		<u>63</u>	<u>1667</u>			<u>63</u>	<u>1653</u>

FORMATION

TEST

REPORT



Home Office:

Wichita, Kansas 67201

P.O. Box 1599

Phone (316) 262-5861

Company _____ Testers and Well No. _____ #1 "D" HOWELL Sec. 7 LWP. 29S RKE. LE _____

WESTERN TESTING CO. INC.
SUBSURFACE PRESSURE SURVEY

DATE: 3/5/85
 CUSTOMER: PETRO KANSAS OIL PRODUCERS INC
 WELL: 1 TEST: 1
 ELEVATION (KB): 1287 FORMATION: MISSISSIPPI
 SECTION: 7 TOWNSHIP: 29S
 RANGE: 1E COUNTY: SEDGWICK STATE: KANSAS
 GAUGE SN #5666 RANGE: 3950 CLOCK: 12

INTERVAL TEST FROM: 3285 FT TO: 3311 FT TOTAL DEPTH: 3311 FT
 DEPTH OF SELECTIVE ZONE: FT
 PACKER DEPTH: 3280 FT SIZE: 6 3/4 IN PACKER DEPTH: 3285 FT SIZE: 6 3/4 IN
 PACKER DEPTH: FT SIZE: IN PACKER DEPTH: FT SIZE: IN

DRILLING CONTRACTOR: EDCO DRLG
 MUD TYPE: CHEMICAL VISCOSITY: 48
 WEIGHT: 10.0 WATER LOSS (CC): 11.2
 CHLORIDES (P.P.M.): 1600
 JARS - MAKE: SERIAL NUMBER:
 DID WELL FLOW? YES REVERSED OUT? NO
 DRILL COLLAR LENGTH: 236 FT I.D.: 2.25 IN
 WEIGHT PIPE LENGTH: FT I.D.: IN
 DRILL PIPE LENGTH: 3024 FT I.D.: 3.8 IN
 TEST TOOL LENGTH: 25 FT TOOL SIZE: 5 1/2 OD IN
 ANCHOR LENGTH: 26 FT SIZE: 5 1/2 OD IN
 SURFACE CHOKE SIZE: 3/4 IN BOTTOM CHOKE SIZE: 3/4 IN
 MAIN HOLE SIZE: 7 7/8 IN TOOL JOINT SIZE: 4 1/2 XH IN

BLOW: STRONG BLOW THROUGHOUT TEST. GAS
 TO SURFACE IN 8 MINUTES ON THE
 INITIAL FLOW PERIOD. SEE ATTACHED
 SHEET FOR GAS MEASUREMENTS.

RECOVERED: 240 FT OF: GAS CUT MUDDY WATER.
 RECOVERED: FT OF: CHLORIDES 89000 PPM.
 RECOVERED: FT OF:
 RECOVERED: FT OF:
 RECOVERED: FT OF:
 RECOVERED: FT OF:
 RECOVERED: FT OF:
 RECOVERED: FT OF:
 RECOVERED: FT OF:

REMARKS:

TIME SET PACKER(S): 6:00 PM TIME STARTED OFF BOTTOM: 9:00 PM
 WELL TEMPERATURE: 105 °F
 INITIAL HYDROSTATIC PRESSURE: (A) 1729 PSI
 INITIAL FLOW PERIOD MIN: 30 (B) 124 PSI TO (C) 140 PSI
 INITIAL CLOSED IN PERIOD MIN: 63 (D) 1667 PSI
 FINAL FLOW PERIOD MIN: 30 (E) 130 PSI TO (F) 130 PSI
 FINAL CLOSED IN PERIOD MIN: 63 (G) 1653 PSI
 FINAL HYDROSTATIC PRESSURE (H) 1685 PSI

WESTERN TESTING CO. INC.
GAS FLOW REPORT

DATE: 3/5/85
CUSTOMER: PETRO KANSAS OIL PRODUCERS INC
WELL: 1 TEST: 1
ELEVATION (KB): 1287 FORMATION: MISSISSIPPI
SECTION: 7 TOWNSHIP: 29S
RANGE: 1E COUNTY: SEDGWICK STATE: KANSAS
GAUGE SN #5666 RANGE: 3950 CLOCK: 12

TIME GAUGE (MIN)	TESTER TYPE	ORIFICE SIZE	PRESSURE (PSI)	FLOW DESCRIPTION
---------------------	-------------	-----------------	-------------------	------------------

PRE FLOW

15	MERLA	3/4	10 PSIG	259000 CFPD
30			13	303000

SECOND FLOW

10	MERLA	3/4	14 PSIG	317000 CFPD
20			12	288000
30			12	288000

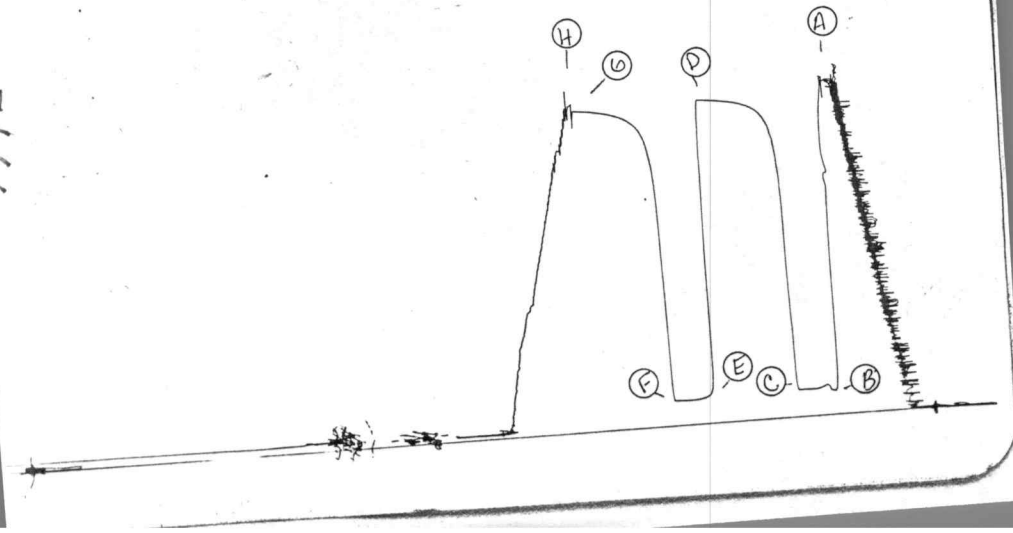
GAS BOTTLE SN #:
DATE BOTTLE FILLED: 3/5/85
DATE TO BE INVOICED:

8078

5666

TKT # 8078

I



TKT# 8078
0

8078

540200

