



WESTERN TESTING CO., INC.

FORMATION TESTING

TICKET

No

8079

P. O. BOX 1599 PHONE (316) 262-5861

WICHITA, KANSAS 67201

Elevation 1287 KB

Formation Miss

Eff. Pay Ft.

District Augusta

Date 3-6-85

Customer Order No.

COMPANY NAME PETRO KANSAS Oil Producers, Inc

ADDRESS 9415 E. HARRY, Suite 107 WICHITA, KS 67207

LEASE AND WELL NO Howell "D" #1 COUNTY Sedgewick STATE KS Sec. 7 Twp 29S Rge 1E

Mail Invoice To SAME No. Copies Requested 1

Mail Charts To #1 "D" HOWELL SAME No. Copies Requested 5

Formation Test No. 2 Interval Tested From 3308 ft. to 3320 ft. Total Depth 3320 ft.

Packer Depth 3303 ft. Size 6.75 in. Packer Depth - ft. Size - in.

Packer Depth 3308 ft. Size 6.75 in. Packer Depth - ft. Size - in.

Depth of Selective Zone Set

Top Recorder Depth (Inside) 3311 ft.

Recorder Number 5666 Cap. 3950

Bottom Recorder Depth (Outside) 3315 ft.

Recorder Number 13265 Cap. 3975

Below Saddle Recorder Depth - ft.

Recorder Number - Cap. -

Drilling Contractor EDCO #6

Drill Collar Length 236 I. D. 2.25 in.

Mud Type CHEM Viscosity 48

Weight Pipe Length - I. D. - in.

Weight 10.0 Water Loss 11.2 cc.

Drill Pipe Length 3052 I. D. 3.8 in.

Chlorides 1600 P.P.M.

Test Tool Length 20 ft. Tool Size 5.5 in.

Jars: Make - Serial Number -

Anchor Length 12 ft. Size 5.5 in.

Did Well Flow? NO Reversed Out NO

Surface Choke Size .75 in. Bottom Choke Size .75 in.

Main Hole Size 7 7/8 in. Tool Joint Size 4 1/2 X 4 in.

Blow: Strong thru out

Recovered 930 ft. of Gas in Pipe

Recovered 70 ft. of Slight oil + Gas cut watery mud 10% gas 10% oil

Recovered 120 ft. of Salt water

Recovered - ft. of

Recovered - ft. of

Chlorides 100,000 P.P.M. Sample Jars used 3 Remarks:

RECEIVED MAR 06 1985

Time On Location 4:00 A.M. Time Pick Up Tool 4:10 A.M. Time Off Location 10:00 A.M.

Time Set Packer(s) 5:30 A.M. Time Started Off Bottom 8:00 A.M. Maximum Temperature 105°F

Initial Hydrostatic Pressure (A) 1695 P.S.I.

Initial Flow Period Minutes 30 (B) 70 P.S.I. to (C) 70 P.S.I.

Initial Closed In Period Minutes 30 (D) 1465 P.S.I.

Final Flow Period Minutes 30 (E) 100 P.S.I. to (F) 110 P.S.I.

Final Closed In Period Minutes 60 (G) 1575 P.S.I.

Final Hydrostatic Pressure (H) 1685 P.S.I. #5666

COMPANY TERMS

Western Testing Co., Inc. shall not be liable for damages of any kind to the property or personnel of the one for whom a test is made or for any loss suffered or sustained directly or indirectly through the use of its equipment, of its statements or opinion concerning the results of any test. Tools lost or damaged in the hole shall be paid at cost by the party for whom the test is made.

All charges subject to 12% interest after 60 days from date of invoice. Any expense incurred for collection will be added to the original amount.

Test Approved By Wesley Hawken Signature of Customer or his authorized representative

Western Representative Allen Edington 0525

FIELD INVOICE

Table with 2 columns: Item and Amount. Items include Open Hole Test (\$550), Misrun, Straddle Test, Jars, Selective Zone, Safety Joint, Standby, Evaluation, Extra Packer, Circ. Sub., Mileage, Fluid Sampler, Extra Charts.

WESTERN TESTING CO., INC.
Pressure Data

Date 3-6

Test Ticket No. 8079

Recorder No. 5666 Capacity _____ Location _____ Ft. _____

Clock No. _____ Elevation _____ Well Temperature _____ °F

Point	Pressure	Open Tool	Time Given	Time Computed
A Initial Hydrostatic Mud	<u>1693</u> P.S.I.		<u>30</u> Mins	<u>30</u> Mins
B First Initial Flow Pressure	<u>53</u> P.S.I.	First Flow Pressure	<u>30</u> Mins	<u>30</u> Mins
C First Final Flow Pressure	<u>69</u> P.S.I.	Initial Closed-in Pressure	<u>30</u> Mins	<u>30</u> Mins
D Initial Closed-in Pressure	<u>1466</u> P.S.I.	Second Flow Pressure	<u>30</u> Mins	<u>30</u> Mins
E Second Initial Flow Pressure	<u>97</u> P.S.I.	Final Closed-in Pressure	<u>60</u> Mins	<u>63</u> Mins
F Second Final Flow Pressure	<u>106</u> P.S.I.			
G Final Closed-in Pressure	<u>1574</u> P.S.I.			
H Final Hydrostatic Mud	<u>1673</u> P.S.I.			

PRESSURE BREAKDOWN

First Flow Pressure
Breakdown: 7 Inc.
of 5 mins. and a
final inc. of 0 Min.

Initial Shut-In
Breakdown: 11 Inc.
of 3 mins. and a
final inc. of 0 Min.

Second Flow Pressure
Breakdown: 7 Inc.
of 5 mins. and a
final inc. of 0 Min.

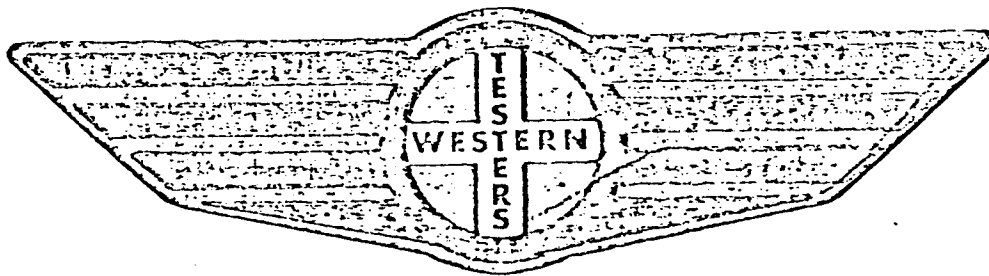
Final Shut-In
Breakdown: 22 Inc.
of 3 mins. and a
final inc. of 0 Min.

Point Mins.	Press.	Point Minutes	Press.	Point Minutes	Press.	Point Minutes	Press.
P 1 0	<u>53</u>	0	<u>69</u>	0	<u>97</u>	0	<u>106</u>
P 2 5	<u>53</u>	3	<u>229</u>	5	<u>97</u>	3	<u>257</u>
P 3 10	<u>53</u>	6	<u>540</u>	10	<u>99</u>	6	<u>500</u>
P 4 15	<u>56</u>	9	<u>922</u>	15	<u>101</u>	9	<u>775</u>
P 5 20	<u>59</u>	12	<u>1131</u>	20	<u>103</u>	12	<u>998</u>
P 6 25	<u>64</u>	15	<u>1251</u>	25	<u>105</u>	15	<u>1157</u>
P 7 30	<u>69</u>	18	<u>1327</u>	30	<u>106</u>	18	<u>1254</u>
P 8 35		21	<u>1386</u>	35		21	<u>1319</u>
P 9 40		24	<u>1427</u>	40		24	<u>1370</u>
P10 45		27	<u>1456</u>	45		27	<u>1406</u>
P11 50		30	<u>1466</u>	50		30	<u>1437</u>
P12 55		33		55		33	<u>1460</u>
P13 60		36		60		36	<u>1481</u>
P14 65		39		65		39	<u>1497</u>
P15 70		42		70		42	<u>1513</u>
P16 75		45		75		45	<u>1526</u>
P17 80		48		80		48	<u>1538</u>
P18 85		51		85		51	<u>1548</u>
P19 90		54		90		54	<u>1556</u>
P20 95		57		95		57	<u>1564</u>
100		60		100		60	<u>1571</u>
						63	<u>1574</u>

FORMATION

TEST

REPORT



Home Office:

Wichita, Kansas 67201

P.O. Box 1599

Phone (316) 262-5861

PETRO KANSAS OIL PRODUCERS, INC. Case and Well No. #1 "D" HOWELL Sec. 7 Twp. 29S Rge. 1E Test No. 2 Date 3/6/85

WESTERN TESTING COMPANY INC.
SUBSURFACE PRESSURE SURVEY

DATE: 3/6/85
 CUSTOMER: PETRO KANSAS OIL PRODUCERS INC
 WELL: 1 TEST: 2
 ELEVATION (KB): 1287 FORMATION: MISSISSIPPI
 SECTION: 7 TOWNSHIP: 29S
 RANGE: 1E COUNTY: SEDGWICK STATE: KS
 GAUGE SN #5666 RANGE: 3950 CLOCK: 12

INTERVAL TEST FROM: 3308 FT TO: 3320 FT TOTAL DEPTH: 3320 FT
 DEPTH OF SELECTIVE ZONE: FT
 PACKER DEPTH: 3303 FT SIZE: 6.75 IN PACKER DEPTH: 3308 FT SIZE: 6.75 IN
 PACKER DEPTH: FT SIZE: IN PACKER DEPTH: FT SIZE: IN

DRILLING CONTRACTOR: EDCO
 MUD TYPE: CHEMICAL VISCOSITY: 48
 WEIGHT: 10.0 WATER LOSS (CC): 11.2
 CHLORIDES (P.P.M.): 1600
 JARS - MAKE: SERIAL NUMBER:
 DID WELL FLOW? NO REVERSED OUT? NO
 DRILL COLLAR LENGTH: 236 FT I.D.: 2.25 IN
 WEIGHT PIPE LENGTH: FT I.D.: IN
 DRILL PIPE LENGTH: 3052 FT I.D.: 3.8 IN
 TEST TOOL LENGTH: 20 FT TOOL SIZE: 5 1/2 OD IN
 ANCHOR LENGTH: 12 FT SIZE: 5 1/2 OD IN
 SURFACE CHOKE SIZE: .75 IN BOTTOM CHOKE SIZE: .75 IN
 MAIN HOLE SIZE: 7 7/8 IN TOOL JOINT SIZE: 4 1/2 XH IN

BLOW: INITIAL FLOW PERIOD STRONG BLOW.
 FINAL FLOW PERIOD STRONG BLOW.

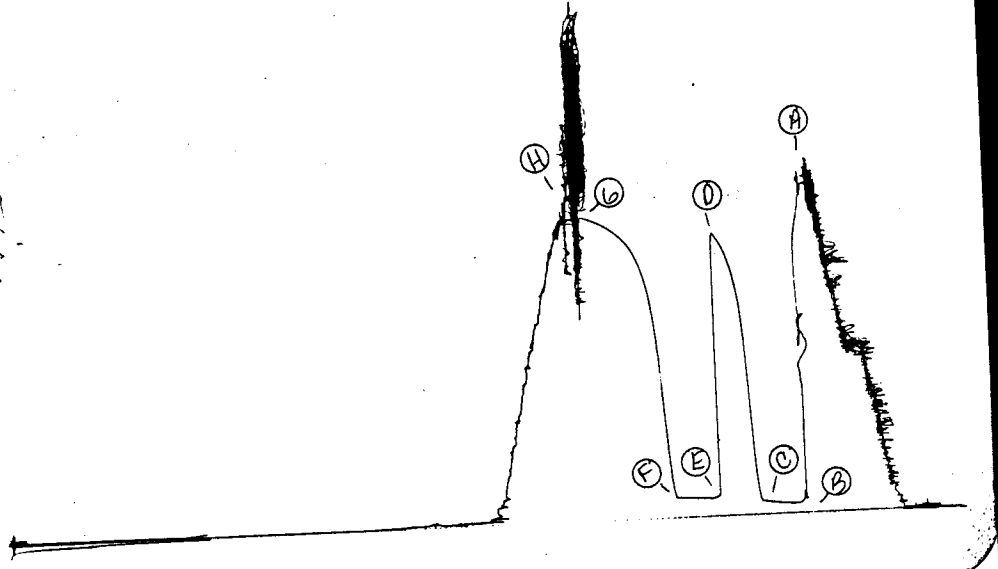
RECOVERED: 930 FT OF: GAS IN PIPE
 RECOVERED: 70 FT OF: SLIGHT OIL & GAS CUT WATERY MUD
 RECOVERED: FT OF: (10% GAS; 10% OIL)
 RECOVERED: 120 FT OF: SALT WATER
 RECOVERED: FT OF:
 RECOVERED: FT OF:
 RECOVERED: FT OF:
 RECOVERED: FT OF:
 RECOVERED: FT OF:

REMARKS: CHLORIDES 100000 P.P.M.

TIME SET PACKER(S): 5:30 AM TIME STARTED OFF BOTTOM: 8:00 AM
 WELL TEMPERATURE: 105 'F
 INITIAL HYDROSTATIC PRESSURE: (A) 1693 PSI
 INITIAL FLOW PERIOD MIN: 30 (B) 53 PSI TO (C) 69 PSI
 INITIAL CLOSED IN PERIOD MIN: 30 (D) 1466 PSI
 FINAL FLOW PERIOD MIN: 30 (E) 97 PSI TO (F) 106 PSI
 FINAL CLOSED IN PERIOD MIN: 63 (G) 1574 PSI
 FINAL HYDROSTATIC PRESSURE (H) 1673 PSI

TKT # 8079

I



TKT # 8079

0

8679

13245

