

OILFIELD RESEARCH LABORATORIES

536 NORTH HIGHLAND - CHANUTE, KANSAS 66720 - PHONE (316) 431-2650

March 29, 1982

Conti Oil Corporation
P. O. Box 24
Chanute, Kansas 66720

Gentlemen:

Enclosed herewith are the results of tests run on the rotary core taken from the Dudley Lease, Well No. 17, located in Neosho County, Kansas.

The core was sampled and sealed in plastic bags by a representative of the client and was submitted to our laboratory on March 26, 1982.

Your business is greatly appreciated.

Very truly yours,

OILFIELD RESEARCH LABORATORIES



Sanford A. Michel

SAM/kas

5 c to Chanute, Kansas

Oilfield Research Laboratories

GENERAL INFORMATION & SUMMARY

Company Conti Oil Corporation Lease Dudley Well No. 17
 Location 3135' EWL & 1485' NSL, SE $\frac{1}{4}$
 Section 24 Twp. 29S Rge. 17E County Neosho State Kansas

Elevation, Feet	
Name of Sand	Bartlesville
Top of Core	885.0
Bottom of Core	899.2
Top of Sand	(Tested) 885.6
Bottom of Sand	(Tested) 898.8
Total Feet of Permeable Sand	12.4

Distribution of Permeable Sand:
Permeability Range
Millidarcys

	Feet	Cum. Ft.
0 - 1	3.0	3.0
2 - 4	4.2	7.2
4 - 11	2.8	10.0
28 - 48	2.4	12.4

Average Permeability Millidarcys	10.3
Average Percent Porosity	14.4
Average Percent Oil Saturation	23.1
Average Percent Water Saturation.....	56.2
Average Oil Content, Bbls./A. Fr.	267.
Total Oil Content, Bbls./Acre.....	3,520.

OILFIELD RESEARCH LABORATORIES

LOGName Conti Oil Corporation Lease Dudley Well No. 17

<u>Depth Interval, Feet</u>	<u>Description</u>
885.0 - 885.6	Gray and brown laminated shale and sandstone.
885.6 - 886.4	Light brown sandstone with scattered shale partings.
886.4 - 887.1	Brown sandstone.
887.1 - 887.7	Light brown sandstone with scattered shale partings.
887.7 - 888.6	Brown sandstone.
888.6 - 894.0	Light brown very shaly sandstone with scattered shale partings.
894.0 - 896.2	Light brown shaly sandstone with scattered fine shale partings.
896.2 - 897.4	Gray and very light brown laminated shale and sandstone.
897.4 - 898.0	Very light brown and gray laminated sandstone and shale.
898.0 - 898.8	Very light brown very shaly sandstone.
898.8 - 899.2	Gray and very light brown laminated shale and sandstone.

RESULTS OF SATURATION & PERMEABILITY TESTS

TABLE 1-B

Company Conti Oil Corporation Lease Dudley Well No. 17

Sample No.	Depth, Feet	Effective Porosity Percent	Percent Saturation			Oil Content Bbls. / A Ft.	Perm., Mill.	Feet of Sand		Total Oil Content	Perm. Capacity Ft. X md.
			Oil	Water	Total			Ft.	Cum. Ft.		
1	885.9	14.7	27	36	63	308	44.	0.8	0.8	246	35.20
2	886.5	14.2	43	29	72	474	28.	0.7	1.5	332	19.60
3	887.3	15.5	30	32	62	361	10.	0.6	2.1	217	6.00
4	888.5	16.9	20	49	69	262	47.	0.9	3.0	236	42.30
5	889.5	14.5	21	56	77	236	0.78	1.4	4.4	330	1.09
6	890.4	16.8	14	58	72	182	2.1	1.0	5.4	182	2.10
7	891.6	14.6	27	59	86	306	2.8	1.0	6.4	306	2.80
8	892.3	15.0	23	60	83	268	0.98	1.0	7.4	268	0.98
9	893.4	14.4	26	57	83	291	3.0	1.0	8.4	291	3.00
10	894.6	17.4	41	44	85	554	4.3	1.0	9.4	554	4.30
11	895.6	14.1	22	63	85	241	5.2	1.2	10.6	289	6.24
12	896.6	12.4	10	73	83	96	3.0	1.2	11.8	115	3.60
13	897.6	12.1	17	78	95	160	0.41	0.6	12.4	96	0.25
14	898.4	8.4	11	78	89	72	Imp.	0.8	13.2	58	0.00

Oilfield Research Laboratories

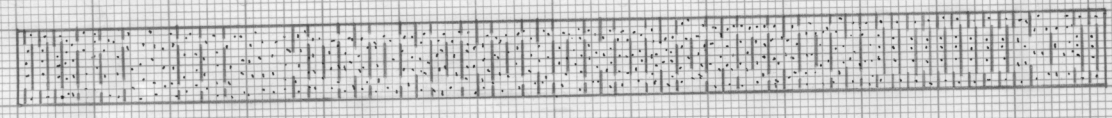
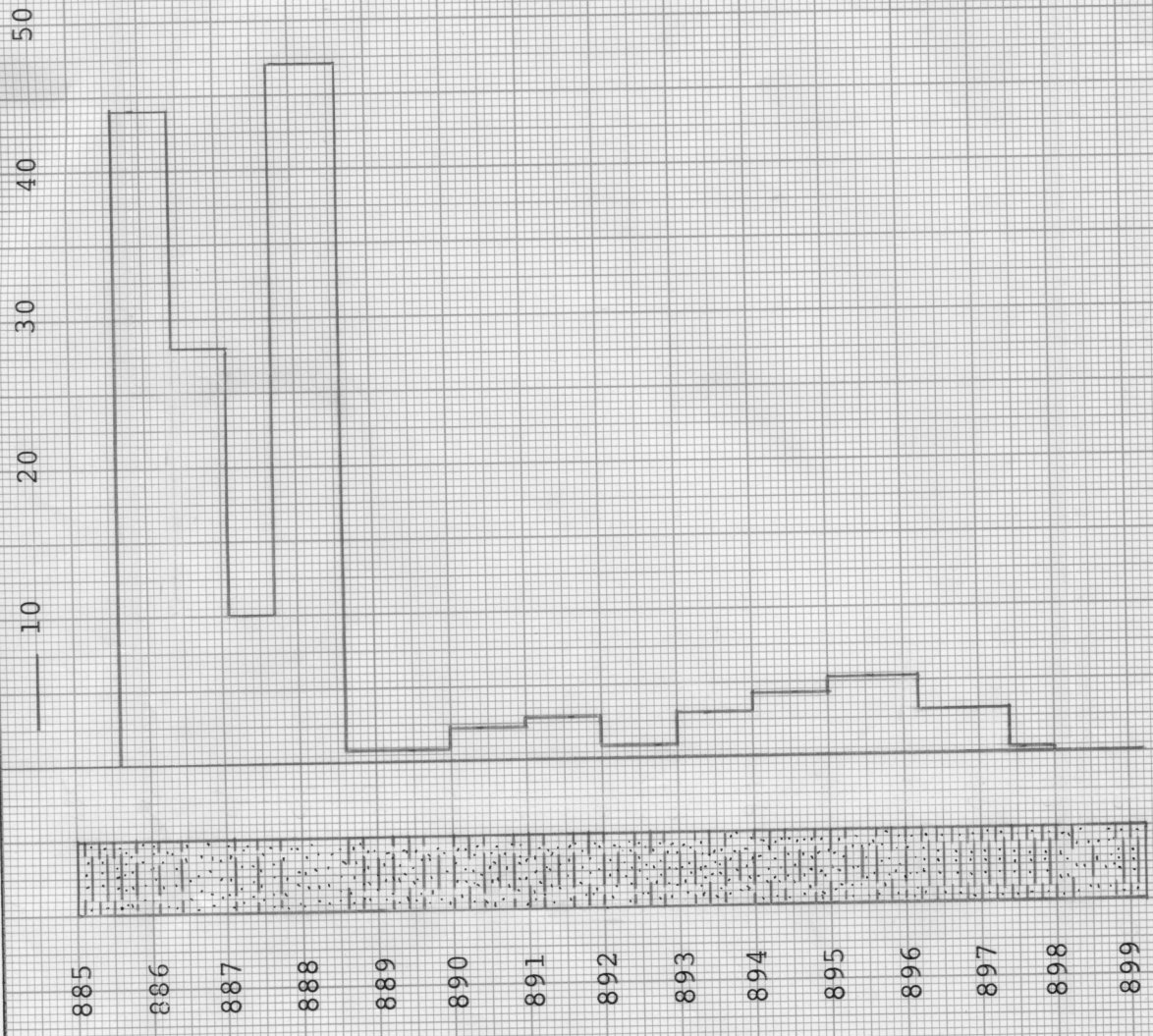
SUMMARY OF PERMEABILITY & SATURATION TESTS

TABLE III

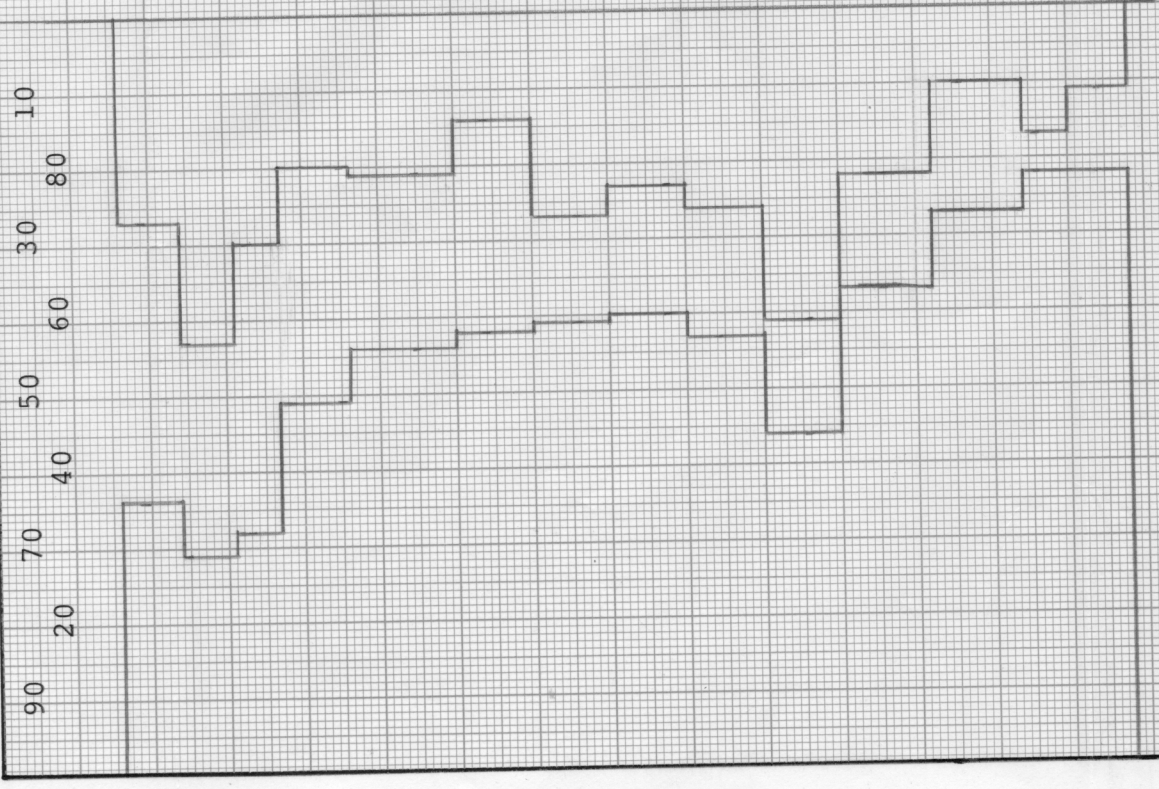
Company	Lease	Well No.				
Conti Oil Corporation	Dudley	17				
Depth Interval, Feet	Feet of Core Analyzed	Average Percent Porosity	Average Percent Oil Saturation	Average Permeability, Millidarcys	Permeability Capacity Ft. x Md.	Total Oil Content Bbls./Acre
885.6 - 887.7	2.1	14.8	33.2	29.0	60.80	795
887.7 - 896.2	8.5	15.4	24.1	7.4	62.81	2,456
896.2 - 898.8	2.6	11.1	11.9	2.1	3.85	269
885.6 - 898.8	13.2	14.4	23.1	10.3	127.46	3,520

PERMEABILITY, IN MILLIDARCYS

WATER SAT., PERCENT ← → OIL SAT., PERCENT



SANDSTONE WITH SHALE PARTINGS
SHALY SANDSTONE WITH SHALE PARTINGS
LAMINATED SANDSTONE AND SHALE



KEY:
SANDSTONE
SHALY SANDSTONE

CONTI OIL CORPORATION

DUDLEY LEASE

WELL NO. 17

NEOSHO COUNTY, KANSAS

DEPTH INTERVAL, FEET	FEET OF CORE ANALYZED	AVERAGE PERCENT POROSITY	AVG. OIL SATURATION PERCENT	AVG. WATER SATURATION PERCENT	AVERAGE PERMEABILITY, MILLIDARCS
885.6 - 887.7	2.1	14.8	33.2	32.5	29.0
887.7 - 896.2	8.5	15.4	24.1	56.0	7.4
896.2 - 898.8	2.6	11.1	11.9	75.7	2.1
885.6 - 898.8	13.2	14.4	23.1	56.2	10.3

OILFIELD RESEARCH LABORATORIES
CHANUTE, KANSAS
MARCH, 1982

PDC