

30-29-17E
30-29-17E

STATE CORPORATION COMMISSION OF KANSAS
OIL & GAS CONSERVATION DIVISION

WELL COMPLETION OR RECOMPLETION FORM
ACO-1 WELL HISTORY

API NO. 15 - 205-24,129
County Wilson
SE/4 Sec 30 Twp 29S Rge 17

DESCRIPTION OF WELL AND LEASE

Operator: license # 8777
name DiCo Oil
address P.O. Drawer "D"
City/State/Zip Chanute, Ks 66720

1470 Ft North from Southeast Corner of Section
1560 Ft West from Southeast Corner of Section
(Note: locate well in section plat below)

Lease Name Monte Erba Well# D-2

Field Name Altoona

Producing Formation Bartlesville

Elevation: Ground 890' KB

Operator Contact Person Dick Cornell
Phone (316) 431-6430

Contractor: license # 9605
name Rusty's Drilling Co.

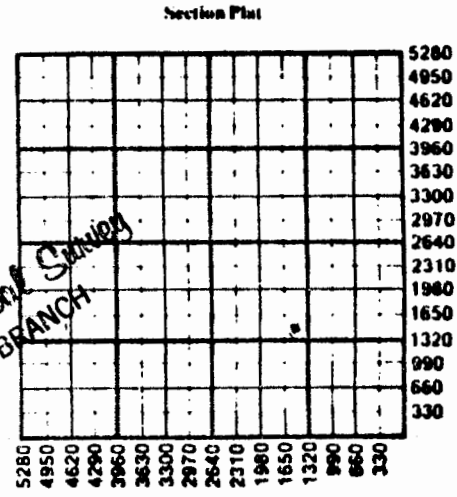
Wellsite Geologist None
Phone

PURCHASER Square Deal Oil Co., Inc.

Designate Type of Completion
 New Well Re-Entry Workover

Oil SWD Temp Abd
 Gas Inj Delayed Comp.
 Dry Other (Core, Water Supply etc.)

If OWWO: old well info as follows:
Operator
Well Name
Comp. Date Old Total Depth



State Geological Survey
WICHITA BRANCH

WATER SUPPLY INFORMATION

Drilling Method: Mud Rotary Air Rotary Cable

3/8/85 3/12/85 4/19/85
Spud Date Date Reached TD Completion Date

890' Total Depth PBDT

Amount of Surface Pipe Set and Cemented at 21 feet

Multiple Stage Cementing Collar Used? Yes No

If Yes, Show Depth Set feet

If alternate completion, cement circulated from 890 feet depth to top w/ 90 SX cmt

Division of Water Resources Permit #

Groundwater Ft North From Southeast Corner and Ft West From Southeast Corner of (Well) Sec Twp Rge East West

Surface Water Ft North From Southeast Corner and Ft West From Southeast Corner of (Stream, Pond etc.) Sec Twp Rge East West

Other (explain) (purchased from city, R.W.D.#)

Disposition of Produced Water: Disposal Repressuring
Docket # CO-28235

INSTRUCTIONS: This form shall be completed in duplicate and filed with the Kansas Corporation Commission, 200 Colorado Derby Building, Wichita, Kansas 67202, within 90 days after completion or recompletion of any well. Rules 82-3-130 and 82-3-107 apply.

Information on side two of this form will be held confidential for a period of 12 months if requested in writing and submitted with the form. See rule 82-3-107 for confidentiality in excess of 12 months.

One copy of all wireline logs and drillers time log shall be attached with this form. Submit CP-4 form with all plugged wells. Submit CP-111 form with all temporarily abandoned wells.

All requirements of the statutes, rules, and regulations promulgated to regulate the oil and gas industry have been fully complied with and the statements herein are complete and correct to the best of my knowledge.

RECEIVED
STATE CORPORATION COMMISSION
JUL 02 1985
Wichita, Kansas

WELL LOG

INSTRUCTIONS: Show important tops and base of formations penetrated. Detail all cores. Report all drill stem tests giving interval tested, time tool open and closed, flowing and shut-in pressures, whether shut-in pressure reached static level, hydrostatic pressures, bottom hole temperature, fluid recovery, and flow rates if gas to surface during test. Attach extra sheet if more space is needed. Attach copy of log.

Drill Stem Tests Taken Yes No
 Samples Sent to Geological Survey Yes No
 Cores Taken Yes No

Formation Description
 Log Sample

Top soil
 Shale
 Lime
 Shale
 Lime
 Shale - sandy
 Lime
 Shale
 Lime
 Shale - sandy
 Lime
 Shale - black
 Lime
 Shale - black
 Lime - sandy
 Shale - sandy
 Sand - broken
 Sand - oil (cored)
 Sand - oil

Name	Top	Bottom
Soil	0'	3'
	3'	100'
	100'	175'
	175'	220'
	220'	326'
	326'	402'
Altamont	402'	411'
	411'	514'
40' lime - pink	514'	546'
	546'	588'
20' Lime	588'	610'
	610'	620'
5' lime	620'	628'
	628'	636'
	636'	642'
	642'	840'
	840'	856'
	856'	876'
	876'	890'

Date of First Production 4/19/85	Producing method <input type="checkbox"/> flowing <input checked="" type="checkbox"/> pumping <input type="checkbox"/> gas lift <input type="checkbox"/> Other (explain)				
Estimated Production Per 24 Hours	Oil	Gas	Water	Gas-Oil Ratio	Gravity
	10 Bbls	12 MCF	25 Bbls	CFPB	26°

Disposition of gas: vented sold used on lease

METHOD OF COMPLETION open hole perforation other (specify)

PRODUCTION INTERVAL 865' - 883'

CASING RECORD <input type="checkbox"/> new <input type="checkbox"/> used							
Report all strings set - conductor, surface, intermediate, production, etc.							
Purpose of string	size hole drilled	size casing set (in O.D.)	weight lbs/ft.	setting depth	type of cement	# sacks used	type and percent additives
Surface	10"	7"	30	21'	A. Portland	5	4% Cal. Chl.
Production	6 1/2"	4 1/2"	9.5	889'	A. Portland	90	17% salt 4% gel 2% Cal. Chl.

PERFORATION RECORD		Acid, Fracture, Shot, Cement Squeeze Record	
shots per foot	specify footage of each interval perforated	(amount and kind of material used)	Depth
2	865' - 883'	10 sx 20/40 sand 50 sx 12/30 sand 150 bbls. gelled salt water, clay stabilizer	865-883

TUBING RECORD size 2 3/8" set at 860' packer at Yes No

Liner Run Yes No