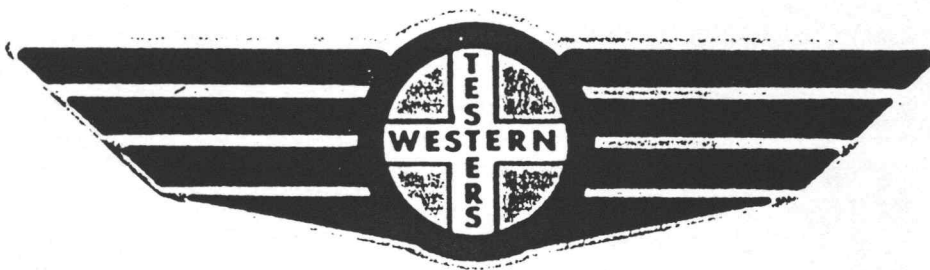


FORMATION TEST REPORT



Home Office:

Wichita, Kansas 67201

P.O. Box 1599

Phone (316) 262-5861

WESTERN TESTING CO. INC.
SUBSURFACE PRESSURE SURVEY

DATE : 1-6-88 TICKET : 11593
 CUSTOMER : RIMCO OIL & GAS COMPANY LEASE : HAY
 WELL : #3 TEST: 1 GEOLOGIST : B. SEGLEM
 ELEVATION : 1277 KB FORMATION : MISSISSIPPIAN
 SECTION : 6 TOWNSHIP : 29S
 RANGE : 1E COUNTY : SEDGWICK STATE : KANSAS
 GAUGE SN# : 4376 RANGE : 4000 CLOCK : 12

INTERVAL FROM : 3230 TO : 3244 TOTAL DEPTH : 3244
 DEPTH OF SELECTIVE ZONE :
 PACKER DEPTH : 3225 SIZE : 6.63
 PACKER DEPTH : 3230 SIZE : 6.63
 PACKER DEPTH : SIZE :
 PACKER DEPTH : SIZE :

DRILLING CON. : EDCO RIG 6
 MUD TYPE : CHEMICAL VISCOSITY : 33
 WEIGHT : 9.7 WATER LOSS (CC) : 16
 CHLORIDES (PPM) : 2000
 JARS-MAKE : - SERIAL NUMBER : -
 DID WELL FLOW ? : - REVERSED OUT ? : -

DRILL COLLAR LENGTH : 328 FT I.D. inch : 2.25
 WEIGHT PIPE LENGTH : 0 FT I.D. inch : 0.00
 DRILL PIPE LENGTH : 2881 FT I.D. inch : 3.80
 TEST TOOL LENGTH : 21 FT TOOL SIZE : 5.50
 ANCHOR LENGTH : 14 FT ANCHOR SIZE : 5.50
 SURFACE CHOKE SIZE : .75 IN BOTTOM CHOKE SIZE : .75
 MAIN HOLE SIZE : 7.875 IN TOOL JOINT SIZE : 4.5 XH

BLOW COMMENT #1 : INITIAL FLOW-WEAK BLOW-HOSE 1" INTO BUCKET.
 BLOW COMMENT #2 : FINAL FLOW-WEAK BLOW-HOSE 2" INTO BUCKET.
 BLOW COMMENT #3 :
 BLOW COMMENT #4 :

WESTERN TESTING CO. INC.
WICHITA - KANSAS

Pressure Transient Report

COMPANY : RIMCO OIL & GAS COMPANY
RIG : SEDGWICK-KANSAS
FIELD : HAY
WELL : #3
DATE : 1-6-88
GAUGE NO : 4376

OPERATIONAL COMMENTS

COMPANY : RIMCO OIL & GAS COMPANY
 WELL # ; #3
 GAUGE # : 4376
 DATE : 6/ 1/88

FIELD : HAY
 JOB # : 11593
 DEPTH : 3244
 TEST :

DATA No.	REAL TIME HR:MN:SS	ELAPSE TIME DELTA HOURS	PRESSURE PSIG	TEMP DEG F	DELTA P Pi-P(i-1)
1	6:40: 0	0.000	34.000	102.00	0.000
2	6:44:59	0.083	34.000	102.00	0.000
3	6:50: 0	0.167	34.000	102.00	0.000
4	6:55: 0	0.250	34.000	102.00	0.000
5	6:59:59	0.333	34.000	102.00	0.000
6	7: 5: 0	0.417	34.000	102.00	0.000
7	7:10: 0	0.500	34.000	102.00	0.000
8	7:13: 0	0.550	35.000	102.00	1.000
9	7:16: 0	0.600	39.000	102.00	4.000
10	7:19: 0	0.650	42.000	102.00	3.000
11	7:22: 0	0.700	47.000	102.00	5.000
12	7:25: 0	0.750	52.000	102.00	5.000
13	7:28: 0	0.800	59.000	102.00	7.000
14	7:31: 0	0.850	65.000	102.00	6.000
15	7:34: 0	0.900	72.000	102.00	7.000
16	7:37: 0	0.950	80.000	102.00	8.000
17	7:40: 0	1.000	84.000	102.00	4.000
18	7:41: 0	1.017	37.000	102.00	-47.000
19	7:44:59	1.083	37.000	102.00	0.000
20	7:50: 0	1.167	37.000	102.00	0.000
21	7:55: 0	1.250	37.000	102.00	0.000
22	7:59:59	1.333	37.000	102.00	0.000
23	8: 5: 0	1.417	37.000	102.00	0.000
24	8:10: 0	1.500	37.000	102.00	0.000
25	8:13: 0	1.550	38.000	102.00	1.000
26	8:16: 0	1.600	40.000	102.00	2.000
27	8:19: 0	1.650	43.000	102.00	3.000
28	8:22: 0	1.700	46.000	102.00	3.000
29	8:25: 0	1.750	50.000	102.00	4.000
30	8:28: 0	1.800	56.000	102.00	6.000
31	8:31: 0	1.850	59.000	102.00	3.000
32	8:34: 0	1.900	66.000	102.00	7.000
33	8:37: 0	1.950	71.000	102.00	5.000
34	8:40: 0	2.000	79.000	102.00	8.000
35	8:43: 0	2.050	87.000	102.00	8.000
36	8:46: 0	2.100	97.000	102.00	10.000
37	8:49: 0	2.150	105.000	102.00	8.000
38	8:52: 0	2.200	115.000	102.00	10.000
39	8:55: 0	2.250	124.000	102.00	9.000

WESTERN TESTING CO. INC.

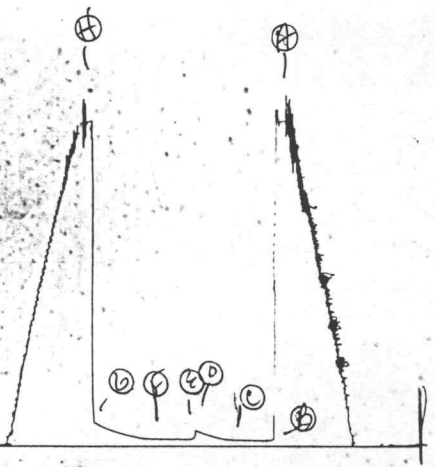
TKI 11593

DST#1

Rec 4376

QK # 11593

I



✱ # 11593
0

TKT11593

DS#1

Rec 13548

