

# OILFIELD RESEARCH LABORATORIES

536 NORTH HIGHLAND - CHANUTE, KANSAS - PHONE HE1-2650

700 NORTH MISSION - OKMULGEE, OKLAHOMA - PHONE SK6-4444

Chanute, Kansas

February 26, 1965

28-30-1-1-E

Fred E. Wood & Associates  
Suite 204, 200 Sixteenth Street  
Denver, Colorado

Gentlemen:

Enclosed herewith are the results of tests run on the Rotary core taken from the Long Lease, Well No. 35-XJ, Wilson County, Kansas, and submitted to our laboratory on February 24, 1965.

This core was sampled and the samples sealed in plastic bags by a representative of the client.

Your business is greatly appreciated.

Very truly yours,

OILFIELD RESEARCH LABORATORIES

*Benjamin R. Pearman*  
Benjamin R. Pearman

BRP:rf

4 c. - Denver, Colorado  
1 c. - A.W. Bailey

LONG 35-XJ

# Oilfield Research Laboratories

## GENERAL INFORMATION & SUMMARY

Company Fred E. Wood & Assoc. Lease Long Well No. 35-XJ

Location \_\_\_\_\_

Section \_\_\_\_\_ Twp. \_\_\_\_\_ Rge. \_\_\_\_\_ County Wilson State Kansas

Name of Sand - - - - - Bartlesville

Top of Core - - - - - 785.0

Bottom of Core - - - - - 795.1

Top of Sand - - - - - (Tested) 785.0

Bottom of Sand - - - - - (Tested) 795.1

Total Feet of Permeable Sand - - - - - 9.1

Total Feet of Floodable Sand - - - - -

Distribution of Permeable Sand:  
Permeability Range  
Millidarcys

Feet

Cum. Ft.

0 - 1	4.6	4.6
1 - 2	2.5	7.1
2 & above	2.0	9.1

Average Permeability Millidarcys - - - - - 1.1

Average Percent Porosity - - - - - 13.8

Average Percent Oil Saturation - - - - - 47.1

Average Percent Water Saturation - - - - - 31.6

Average Oil Content, Bbls./A. Ft. - - - - - 503.

Total Oil Content, Bbls./Acre - - - - - 5,081.

Average Percent Oil Recovery by Laboratory Flooding Tests - - - - -

Average Oil Recovery by Laboratory Flooding Tests, Bbls./A. Ft. - - - - -

Total Oil Recovery by Laboratory Flooding Tests, Bbls./Acre - - - - -

Total Calculated Oil Recovery, Bbls./Acre - - - - -

Packer Setting, Feet - - - - -

Viscosity, Centipoises @ - - - - -

A. P. I. Gravity, degrees @ 60 °F - - - - -

Elevation, Feet - - - - -

OILFIELD RESEARCH LABORATORIES

-LOG-

Company Fred E. Wood & Assoc. Lease Long Well No. 35-XJ

Depth Interval, Description  
Feet \_\_\_\_\_

785.0 - 795.1 - Brown, laminated, shaly sandstone.

Oilfield Research Laboratories

RESULTS OF SATURATION & PERMEABILITY TESTS

TABLE I-B

Company Fred E. Wood & Assoc. Lease Long Well No. 35-XJ

Sample No.	Depth, Feet	Effective Porosity Percent	Percent Saturation			Oil Content Bbls. / A Ft.	Perm., Mill.	Feet of Sand		Total Oil Content	Perm. Capacity Ft. X md.
			Oil	Water	Total			Ft.	Cum. Ft.		
1	785.1	13.3	48	35	83	495	0.49	0.6	0.6	297	0.29
2	786.1	12.5	53	27	80	514	2.7	1.0	1.6	514	2.70
3	787.1	14.6	48	30	78	543	2.1	1.0	2.6	543	2.10
4	788.1	14.0	48	28	76	521	0.31	1.0	3.6	521	0.31
5	789.1	14.9	40	33	73	462	1.3	1.0	4.6	462	1.30
6	790.1	13.3	53	26	79	546	0.96	1.0	5.6	546	0.96
7	791.1	13.7	43	32	75	456	0.38	1.0	6.6	456	0.38
8	792.1	15.1	51	33	84	597	Imp.	1.0	7.6	597	0.00
9	793.1	13.3	46	46	92	474	0.43	1.0	8.6	474	0.43
10	794.1	13.4	44	29	73	457	1.1	1.3	10.1	671	1.65
								Total		5,081	

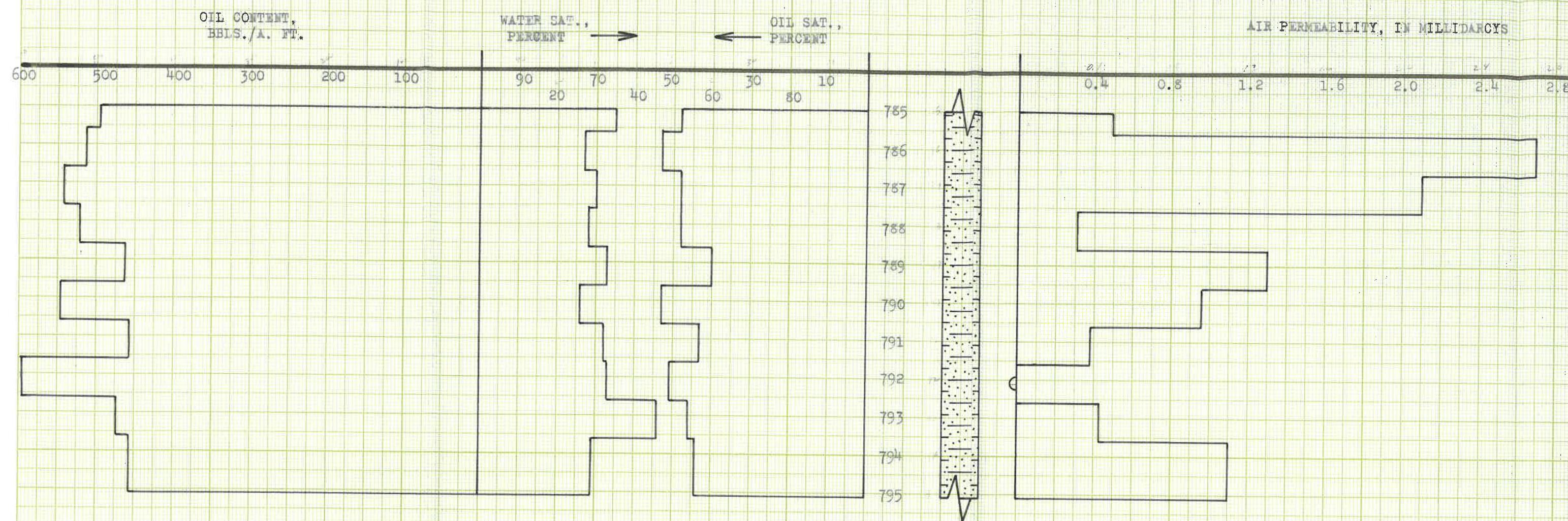
# Oilfield Research Laboratories

## SUMMARY OF PERMEABILITY & SATURATION TESTS

TABLE III

Company	Fred E. Wood & Assoc.	Lease	Long	Well No.	35-XJ	
	Depth Interval, Feet	Feet of Core Analyzed	Average Permeability, Millidarcys	Permeability Capacity Ft. x Md.		
	785.0 - 795.1	9.1	1.1	10.12		
	Depth Interval, Feet	Feet of Core Analyzed	Average Percent Oil Saturation	Average Percent Water Saturation	Average Oil Content Bbl./A. Ft.	Total Oil Content Bbls./Acre
	785.0 - 795.1	10.1	47.1	31.6	503	5,081

93 7



KEUFFEL & ESSER CO.  
MADE IN U.S.A.

SHALY SANDSTONE

○ IMPERMEABLE TO AIR

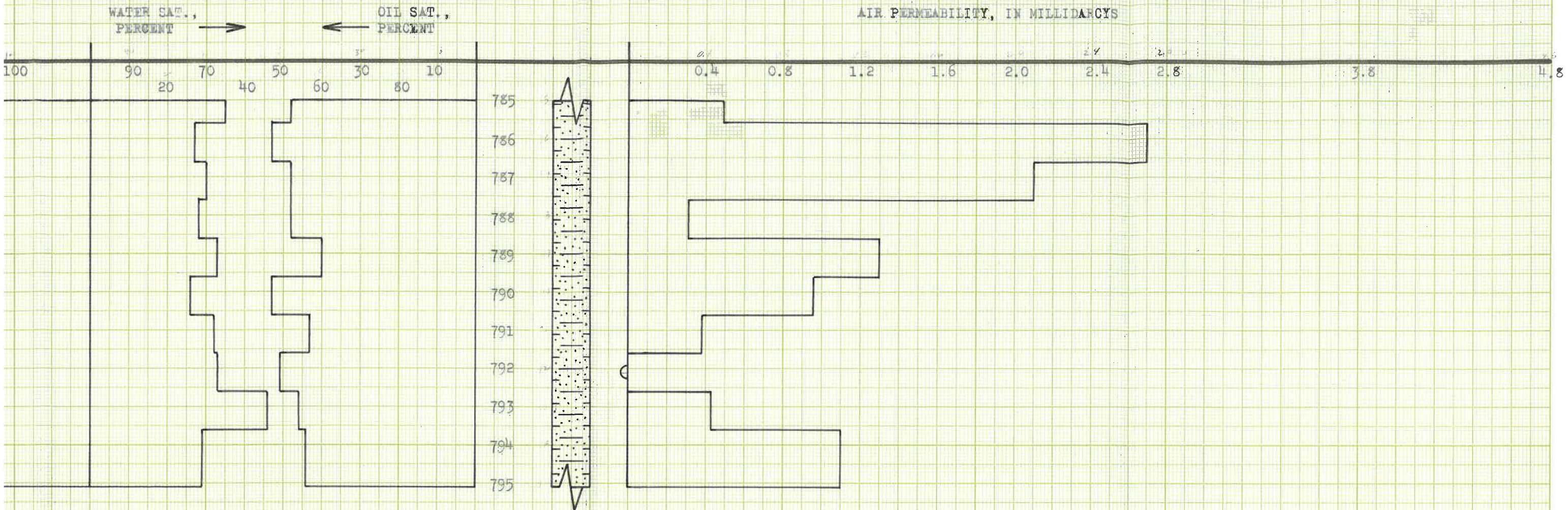
**FRED E. WOOD & ASSOC.**

LONG LEASE

WILSON COUNTY, KANSAS

WELL NO. 35-XJ

DEPTH INTERVAL, FEET	FEET OF CORE ANALYZED	AVERAGE POROSITY, PERCENT	AVG. OIL SATURATION PERCENT	AVG. WATER SATURATION PERCENT	AVG. OIL CONTENT BBLs./A.FT.	TOTAL OIL CONTENT BBLs./ACRE	AVG. AIR PERMEABILITY MILLIDARCYS
785.0 - 795.1	10.1	13.8	47.1	31.6	50.3	5,081	1.1



**FRED E. WOOD & ASSOC.**

LONG LEASE WILSON COUNTY, KANSAS WELL NO. 35-XJ

DEPTH INTERVAL, FEET	FEET OF CORE ANALYZED	AVERAGE POROSITY, PERCENT	AVG. OIL SATURATION PERCENT	AVG. WATER SATURATION PERCENT	AVG. OIL CONTENT BBL./A. FT.	TOTAL OIL CONTENT BBL./ACRE	AVG. AIR PERMEABILITY MILLIDARCYS
785.0 - 795.1	10.1	13.8	47.1	31.6	50.3	5,081	1.1

OILFIELD RESEARCH LABORATORIES  
 CHANUTE, KANSAS  
 FEBRUARY, 1965