

Pd Ch # 2367

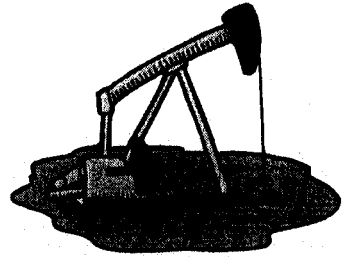
Well Refined Drilling Company, Inc. - Drilling Log
 4270 Gray Road * Thayer, KS 66776

Rig #:	1		
API No:	15-133-25899-0000		
Operator:	Southwind Exploration LLC		
Address:	PO Box 34 Piqua, KS 66761		
Well No:	1	Lease Name:	Wheeler
Footage Location:	3300	feet from the	(N/S) Line
	660	feet from the	(E/W) Line
Contractor:	Well Refined Drilling Company, Inc., Contractor #32871		
Spud Date:	10-11-02	Geologist:	
Date Completed:	10-14-02	Total Depth:	730

S. 25	T. 30	R. 17
Location:	C SE NE	
County:	Neosho	

Gas Tests			
Depth	Oz.	Orifice	Flow (mcf)
423	3	3/4	24.5
443	11	3/4	47.2
543	13	1/2	22.8
616	8	3/4	40.0
638	12	3/4	49.3
683	9	3/4	42.5
703	8	3/4	40.0
730	7	3/4	37.4

Casing Record		
	Surface	Production
Size Hole:	12 1/4	6 3/4
Size Casing:	8 5/8	
Weight:		
Setting Depth:	21	
Type Cement:	Portland	
Sacks:	4 ✓	



Rig Time	Work Performed

Well Log								
Formation	Top	Bottom	Formation	Top	Bottom	Formation	Top	Bottom
Overburden	0	1	shale	469	502	shale	697	708
shale	1	44	Coal	502	503	s shale	708	724
lime	44	75	shale	503	505	Coal	724	725
shale	75	81	lime pink	505	527	shale	725	730
sand	81	139	Blk shale	527	536		730	TD
lime	139	171	Coal	536	537			
Blk shale	171	175	G. shale	537	577			
lime	175	255	lime	577	608			
shale	255	310	Blk shale	608	616			
lime	310	316	lime	616	629			
shale	316	345	Blk shale	629	636			
lime	345	356	Coal	636	637			
shale	356	360	lime	637	642			
lime	360	365	shale	642	676			
shale	365	399	Coal	676	677			
sand	399	427	shale	677	694			
LA sand	427	453	lime	694	696			
s shale	453	469	Coal	696	697			