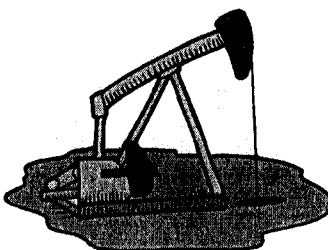


Rig #:	One		
API No:	15-133-25881-0000		
Operator:	Quest Energy Services, Inc.		
Address:	PO Box 100		
	Benedict, KS 66714		
Well No:	1	Lease Name:	Cox - Wilkerson
Footage Location:	2,280	feet from the	S Line
	360	feet from the	E Line
Contractor:	Well Refined Drilling Company, Inc., Contractor #33072		
Spud Date:	20-Aug-02	Geologist:	Dick Cornell
Date Completed:	21-Aug-02	Total Depth:	1163

S.18	T.30	R.18
Location:	NE NE SE	
County:	Neosho	

Casing Record		
	Surface	Production
Size Hole:	12.250	6.750
Size Casing:	8.625	
Weight:		
Setting Depth:	21	
Type Cement:	Portland	
Sacks:	4	
Elevation:		



Rig Time	Work Performed

Well Log								
Formation	Top	Bottom	Formation	Top	Bottom	Formation	Top	Bottom
Overburden	0	2	Lime	429	446	Coal	691	692
Clay	2	7	Shale	446	499	Lime	692	696
Lime	7	26	Sand	499	520	Shale	696	747
Shale	26	107	Added Water	513		Coal	747	748
Lime	107	164	S Shale	520	541	Shale	748	768
Sand	164	195	Shale	541	562	Coal	768	769
Shale	195	201	Coal	562	563	Shale	769	807
Coal	201	202	Shale	563	566	Coal	807	808
Shale	202	225	Pink Lime	566	592	Shale	808	820
Lime	225	249	Black shale	592	594	Coal	820	822
Black Shale	249	253	Lime	594	597	Shale	822	875
Lime	253	333	Black shale	597	607	Coal	875	876
Water	252		Coal	607	608	Shale	876	917
Shale	333	388	Shale	608	643	Coal	917	918
Black Shale	388	392	Oswego Lime	643	669	Shale	918	972
Shale	392	393	Black shale	669	678	Coal	972	973
Lime	393	395	Lime	678	687	Shale	973	1021
Shale	395	429	Black shale	687	691	Coal	1021	1022

