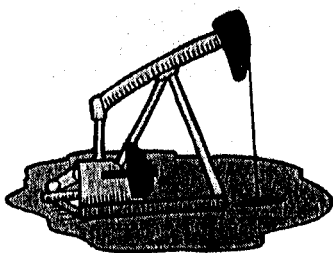


Well Refined Drilling Company, Inc. - Drilling Log
4270 Gray Road * Thayer, KS 66776

Rig #:	One				
API No:	15-133-25740-0000				
Operator:	Quest Energy Services, Inc.				
Address:	PO Box 100				
	Benedict, KS 66714				
Well No:	1	Lease Name:	G. Callarman		
Footage Location:	4,930	feet from the	S	Line	
	1,755.00	feet from the	W	Line	
Contractor:	Well Refined Drilling Company, Inc., Contractor #32871				
Spud Date:	9-Sep-01	Geologist:	Dick Cornell		
Date Completed:	10-Sep-01	Total Depth:	1168		

S. 7	T. 30	R. 18E
Location:	NW NE NW/4	
County:	Neosho	

Casing Record		
	Surface	Production
Size Hole:	12.250	6.750
Size Casing:	8.625	
Weight:		
Setting Depth:	20	
Type Cement:	Portland	
Sacks:	6	



Rig Time	Work Performed

Well Log								
Formation	Top	Bottom	Formation	Top	Bottom	Formation	Top	Bottom
Overburden	0	1	Shale	468	508	Shale	714	716
Sand	1	56	Coal	508	509	Coal	716	717
Coal	56	60	Shale	509	589	Shale	717	719
Shale	60	178	Coal	589	590	Lime	719	725
Lime	178	183	Shale	590	593	Oil Oder	719	724
Shale	183	186	Lime	593	615	Shale	725	774
Lime	186	231	Shale	615	618	Coal	774	776
Shale	231	253	Lime	618	621	Shale	776	795
Water	235		Shale	621	630	Lime	795	797
Lime	253	282	Coal	630	631	Shale	797	801
Shale	282	292	Shale	631	637	Coal	801	802
Lime	292	358	Sand	637	646	Shale	802	812
Shale	358	389	Shale	646	670	Sand	812	836
Lime	389	394	Lime	670	671	Coal	836	837
Shale	394	423	Coal	671	672	S Shale	837	848
Lime	423	426	Lime	672	694	Shale	848	853
Shale	426	461	Shale	694	703	Coal	853	854
Lime	461	468	Lime	703	714	Shale	854	906

