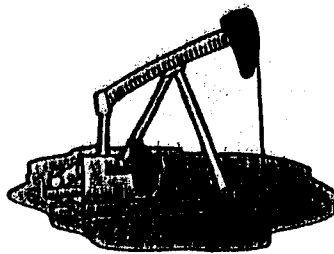


|                   |  |               |              |      |  |
|-------------------|--|---------------|--------------|------|--|
| Rig #:            | One  |               |              |      |  |
| API No:           | 15-133-25808-0000                                      |               |              |      |  |
| Operator:         | Quest Energy Services, Inc.                            |               |              |      |  |
| Address           | PO Box 100   |               |              |      |  |
|                   | Benedict, KS 66714                                     |               |              |      |  |
| Well No:          | 22-3   | Lease Name:   | S. Biller    |      |  |
| Footage Location: | 3,000  | feet from the | S            | Line |  |
|                   | 4,929  | feet from the | W            | Line |  |
| Contractor:       | Well Refined Drilling Company, Inc., Contractor #32871 |               |              |      |  |
| Spud Date:        | 22-Dec-01  | Geologist:    | Dick Cornell |      |  |
| Date Completed:   | 24-Dec-01  | Total Depth:  | 1086         |      |  |

|           |            |      |
|-----------|------------|------|
| S.22      | T.30       | R.18 |
| Location: | SW SWR NW4 |      |
| County:   | Neosho     |      |

| Casing Record  |          |            |
|----------------|----------|------------|
|                | Surface  | Production |
| Size Hole:     | 12.250   | 6.750      |
| Size Casing:   | 8.625    |            |
| Weight:        |          |            |
| Selling Depth: | 20       |            |
| Type Cement:   | Portland |            |
| Sacks:         | 5        |            |



| Rig Time | Work Performed |
|----------|----------------|
|          |                |
|          |                |
|          |                |
|          |                |
|          |                |

| Well Log    |     |        |                 |       |        |           |     |        |
|-------------|-----|--------|-----------------|-------|--------|-----------|-----|--------|
| Formation   | Top | Bottom | Formation       | Top   | Bottom | Formation | Top | Bottom |
| Overburden  | 0   | 9      | Lime            | 296   | 306    | Shale     | 547 | 616    |
| Lime        | 9   | 34     | Black Shale     | 306   | 309    | Coal      | 616 | 617    |
| Sand        | 34  | 64     | Lime            | 309   | 319    | Shale     | 617 | 634    |
| Shale       | 64  | 69     | Shale           | 319   | 427    | Lime      | 634 | 636    |
| Coal        | 69  | 70     | Coal            | 427   | 428    | Shale     | 636 | 639    |
| Sand        | 70  | 98     | Pink Lime       | 428   | 446    | Coal      | 639 | 640    |
| Lime        | 98  | 174    | Black Shale     | 446   | 447    | Shale     | 640 | 674    |
| Water       | 112 |        | Lime            | 447   | 453    | Coal      | 674 | 676    |
| added water | 124 |        | Black Shale     | 453   | 459    | Shale     | 676 | 744    |
| Black Shale | 174 | 204    | Coal            | 459   | 459.2  | Coal      | 744 | 746    |
| Lime        | 204 | 206    | Shale           | 459.2 | 494    | Shale     | 746 | 774    |
| Shale       | 206 | 259    | Oswego Lime     | 494   | 519    | Sand      | 774 | 779    |
| Lime        | 259 | 261    | Black Shale     | 519   | 526    | Shale     | 779 | 781    |
| Shale       | 261 | 264    | Lime            | 526   | 532    | Sand      | 781 | 785    |
| Lime        | 264 | 272    | Black Shale     | 532   | 536    | Shale     | 785 | 890    |
| Shale       | 272 | 278    | Lime            | 536   | 542    | S Shale   | 890 | 894    |
| Lime        | 278 | 282    | Sand - Oil oder | 542   | 544    | LA Sand   | 894 | 902    |
| Shale       | 282 | 296    | Sand            | 544   | 547    | Shale     | 902 | 912    |

