

KANSAS



26-30-ME 1/10/85

WELL COMPLETION REPORT AND DRILLER'S LOG

API No. 15 — 037 — 20,367
County Number

S. 26 T. 30 R. 21 E. W
 Loc. NW NW
 County Crawford

Operator
 Hickory Creek Oil Company

Address
 PO Box 379, Parsons, Kansas 67357

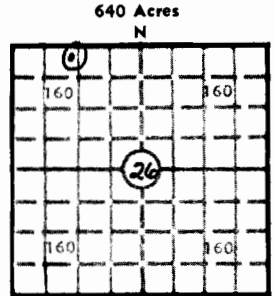
Well No. #5 Lease Name A. Long

Footage Location
225 feet from (N) (S) line 1155 feet from (E) (W) line

Principal Contractor Carter Land & Cattle Co. Geologist J. W. Ellison

Spud Date 5/17/79 Date Completed 5/26/79 Total Depth 303' P.B.T.D.

Directional Deviation Oil and/or Gas Purchaser Eureka Crude Purchasing



640 Acres
 N
 Locate well correctly
 Elev.: Gr. 850.32'
 DF _____ KB _____

CASING RECORD

Report of all strings set — surface, intermediate, production, etc.

Purpose of string	Size hole drilled	Size casing set (in O.D.)	Weight lbs/ft.	Setting depth	Type cement	Sacks	Type and percent additives
surface	9"	7"	20 lbs	20'	portland		none
production	6½"	4½"	9 lbs	300'	portland	50	prem gel (1 sk)

LINER RECORD

PERFORATION RECORD

Top, ft.	Bottom, ft.	Sacks cement	Shots per ft.	Size & type	Depth interval
			1/2	80 g	197 - 215

TUBING RECORD

Size	Setting depth	Packer set at

ACID, FRACTURE, SHOT, CEMENT SQUEEZE RECORD

Amount and kind of material used	Depth interval treated
Versigel frac w/10,000 lbs 12/20 sand	197 - 215

INITIAL PRODUCTION

Date of first production	Producing method (flowing, pumping, gas lift, etc.)				
RATE OF PRODUCTION PER 24 HOURS	Oil	Gas	Water	Gas-oil ratio	
	bbls.	bbls.	MCF	bbls.	CFPB
Disposition of gas (vented, used on lease or sold)			Producing interval (s)		
			injection well		

INSTRUCTIONS: As provided in KCC Rule 82-2-125, within 90 days after completion of a well, one completed copy of this Drillers Log shall be transmitted to the State Geological Survey of Kansas, 4150 Monroe Street, Wichita, Kansas 67209. Copies of this form are available from the Conservation Division, State Corporation Commission, 245 No. Water, Wichita, Kansas 67202. Phone AC 316-522-2206. If confidential custody is desired, please note Rule 82-2-125. Drillers Logs will be on an open file in the Oil and Gas Division, State Geological Survey of Kansas, Lawrence, Kansas 66044.



Operator
Hickory Creek Oil Company

DESIGNATE TYPE OF COMP.: OIL, GAS,
DRY HOLE, SWDW, ETC.:

Well No. 5 Lease Name A. Long

S 26 T 30 R 21 E NW Nw

WELL LOG

Show all important zones of porosity and contents thereof; cored intervals, and all drill-stem tests, including depth interval tested, cushion used, time tool open, flowing and shut-in pressures, and recoveries.

SHOW GEOLOGICAL MARKERS, LOGS RUN,
OR OTHER DESCRIPTIVE INFORMATION.

FORMATION DESCRIPTION, CONTENTS, ETC.	TOP	BOTTOM	NAME	DEPTH
Soil & clay	0	20		
Gravel	20	21		
Shale	21	41		
Lime	41	60		
Shale	60	66		
Lime	66	84		
Slate w/shale	84	183		
Coal	183	185		
Shale w/lime tr.	185	196		
Core (or sand)	196	215		
Sand & shale	215	246		
Shale	246	280		
Lime	280	281		
Shale	281	303		

USE ADDITIONAL SHEETS, IF NECESSARY, TO COMPLETE WELL RECORD.

Date Received	_____
	Signature
	General Manager
	Title
	Date

59-10-21E