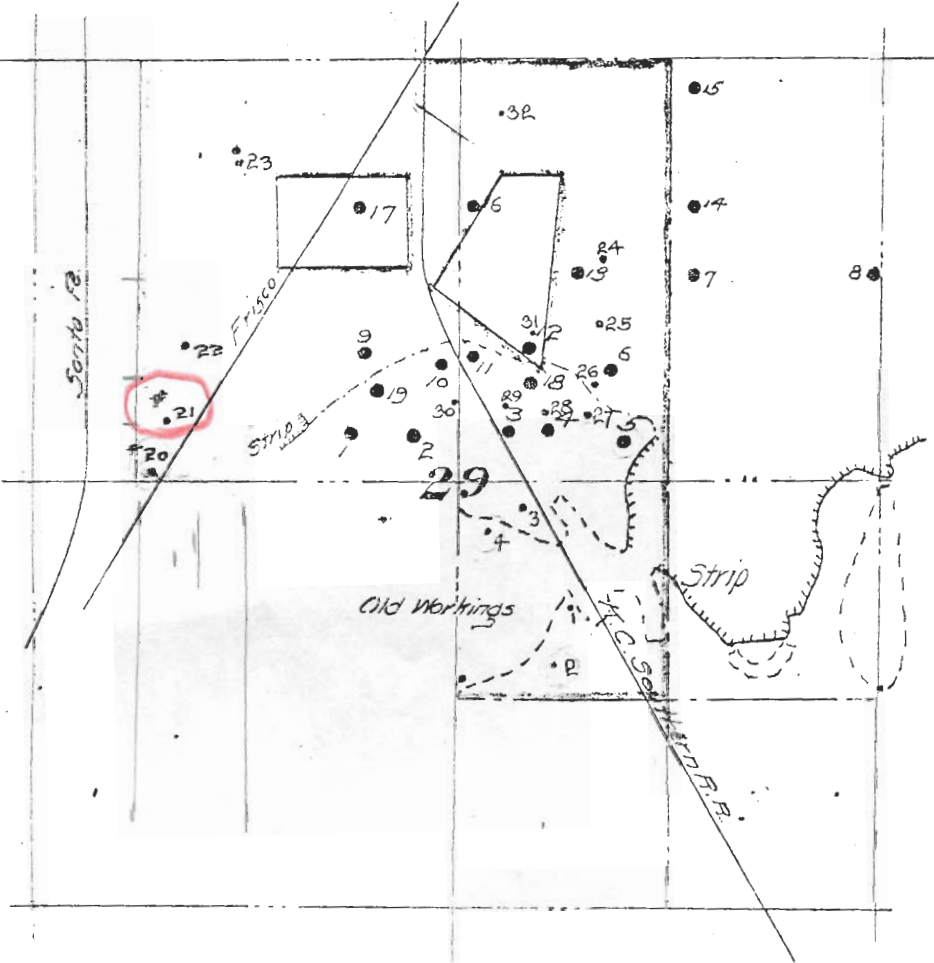


Sec 29

T30R25

CCC-21



Drill Holes in SE 1/4, NW 1/4 & SW 1/4 NE 1/4 Sec 24, T. 30. R. 25

Hole No	Material		Depth	
	ft	in	ft	in
1	Soil & Clay 9'-0"	Scoopstone 3'-0"	Coal 3'-8"	15 8
2	" 10.0	" "	Shale 2'-6" Coal 3'-8"	18 8
3	" 10.0	" 5'-0"	" 13 " 3'-4"	19 6
4	" 4.0	-	- 3'-6"	12 6
5	" 4.6	-	- 3'-6"	13 -
6	" 6.6	Coal 1'-0"	Fire Clay 2'-0"	9 6
7	" 8.0	Scoopstone and Clay	4'-0"	12 -
8	" 8.0	Coal 0'-6"	Fire Clay 4'-0"	10 6
9	" 8.6	" 1'-6"	" 2'-6"	12 6
10	" 8.0	" 3'-6"	-	11 6
11	" 8.0	Scoopstone 2'-0"	Coal 3'-6"	13 6
12	" 8.0	Fire Clay	4'-0"	12 -
13	" 6.0	Coal	0'-6"	6 6
14	" 8.0	Fire Clay	4'-0"	12 -
15	" 7.0	Coal	5'-0"	12 -
16	" 3.6	Coal	1'-6"	12 -
17	" 10.0	Fire Clay	2'-0"	12 -
18	" 7.0	Coal	2'-0"	12 -
19	" 10.0	"	3'-4"	13 4

Drilled by Clemens & Son. January 1904.

20	Soil & Clay	10'-0"	No 1	8	Soil	12
	Scoopstone	1'-0"	Clay		Dead Coal	3 2
	Blue Slate	2 6	Coal			
	Coal	3	Coal			
	Fire Clay	- 8				
	Total	13				
22	Soil & Clay	10 0	No 2	6	Soil	16 -
	Scoopstone	1 -	Clay			6
	Blue Slate	4 6	No 3	6		
	Coal	2 6	Soil			8
	Fire Clay	1 -	Dead Coal			2 2"
	Total	19 0				10 2
21	Soil & Clay	9 6				
	Coal (Soft)	3 2	Soil			9
	Fire Clay	- 4	Dead Coal			3 -
	Total	13 0				12 -
23	Clay	6 -	Soil			13
	Coal (Soft)	- 3	Dead Coal			3 4
	Fire Clay	2 9				
	Total	9 0	Soil			13 6
			Fair Coal			3 8