

DST REPORT

GENERAL INFORMATION

DATE : 12/23/96
CUSTOMER : NOBLE PETROLEUM INC
WELL : #1 TEST: 1
ELEVATION:
SECTION : 26
RANGE : 6E COUNTY: COWLEY
GAUGE SN#: 11018 RANGE : 4425
TICKET : 22297
LEASE : BARNES & CHENOWETH
GEOLOGIST: HONAS
FORMATION: MISSISSIPPI
TOWNSHIP : 30S
STATE : KS
CLOCK : 12

WELL INFORMATION

PERFORATION INTERVAL FROM: 2944.00 ft TO: 2961.00 ft TVD: 2961.0 ft
DEPTH OF SELECTIVE ZONE: TEST TYPE: OIL
DEPTH OF RECORDERS: 2952.0 ft 2958.0 ft
TEMPERATURE: 101.0
DRILL COLLAR LENGTH: 240.0 ft I.D.: 2.200 in
WEIGHT PIPE LENGTH : 0.0 ft I.D.: 0.000 in
DRILL PIPE LENGTH : 2684.0 ft I.D.: 3.800 in
TEST TOOL LENGTH : 20.0 ft TOOL SIZE : 5.500 in
ANCHOR LENGTH : 17.0 ft ANCHOR SIZE: 5.500 in
SURFACE CHOKE SIZE : 0.750 in BOTTOM CHOKE SIZE: 0.750 in
MAIN HOLE SIZE : 7.875 in TOOL JOINT SIZE : 4.5XH
PACKER DEPTH: 2939.0 ft SIZE: 6.630 in
PACKER DEPTH: 2944.0 ft SIZE: 6.630 in
PACKER DEPTH: 0.0 ft SIZE: 0.000 in
PACKER DEPTH: 0.0 ft SIZE: 0.000 in

MUD INFORMATION

DRILLING CON. : BERENTZ DRILLING
MUD TYPE : CHEMICAL
WEIGHT : 9.000 ppg VISCOSITY : 40.00 cp
CHLORIDES : 700 ppm WATER LOSS: 10.000 cc
JARS-MAKE :
DID WELL FLOW?: NO SERIAL NUMBER:
REVERSED OUT?: NO

COMMENTS

Comment

INITIAL FLOW PERIOD WEAK BLOW - INTERMITTENT
SURFACE BLOW THROUGHOUT. FINAL FLOW PERIOD NO
BLOW.

DST REPORT (CONTINUED)

COMMENTS (CONTINUED)

Comment

FLUID RECOVERY

Feet of Fluid	%	%	%	%	Comments
Oil	Gas	Water	Mud		
10.0	0.0	0.0	0.0	100.0	DRILLING MUD

RATE INFORMATION

OIL VOLUME: 0.0000 STB	TOTAL FLOW TIME: 30.0000 min.
GAS VOLUME: 0.0000 SCF	AVERAGE OIL RATE: 0.0000 STB/D
MUD VOLUME: 0.0470 STB	AVERAGE WATER RATE: 0.0000 STB/D
WATER VOLUME: 0.0000 STB	
TOTAL FLUID : 0.0470 STB	

FIELD TIME & PRESSURE INFORMATION

INITIAL HYDROSTATIC PRESSURE: 1460.00

Description	Duration	p1	p End
INITIAL FLOW	15.00	11.00	13.00
INITIAL SHUT-IN	45.00		1019.00
FINAL FLOW	15.00	32.00	33.00
FINAL SHUT-IN	45.00		970.00

FINAL HYDROSTATIC PRESSURE: 1440.00

DST REPORT (CONTINUED)

OFFICE TIME & PRESSURE INFORMATION

INITIAL HYDROSTATIC PRESSURE: 1482.00

<u>Description</u>	<u>Duration</u>	<u>p1</u>	<u>p End</u>
INITIAL FLOW	15.00	8.98	12.70
INITIAL SHUT-IN	45.00		1024.64
FINAL FLOW	15.00	69.40	49.09
FINAL SHUT-IN	45.00		984.02

FINAL HYDROSTATIC PRESSURE: 1453.00

Company: NOBLE PETROLEUM, INC.
Well: #1 BARNES & CHENOWETH
Field: TKT 22297 DST 1

[Monday: Dec. 23, 1996]
Page 1

REC #	DAY	REAL TIME	DT (HRS)	BHP (PSIA)

START FLOW 1				
1	0	1:45:15	0.0000	8.98
8	0	1:46: 5	0.0140	9.86
17	0	1:47:10	0.0320	9.81
26	0	1:48:15	0.0500	9.75
35	0	1:49:19	0.0680	9.69
44	0	1:50:24	0.0859	9.63
53	0	1:51:29	0.1039	9.58
62	0	1:52:34	0.1219	9.52
71	0	1:53:38	0.1399	9.46
80	0	1:54:43	0.1579	10.04
89	0	1:55:48	0.1759	10.10
98	0	1:56:53	0.1939	10.16
107	0	1:57:57	0.2119	10.21
116	0	1:59: 2	0.2298	10.27
125	0	2: 0: 7	0.2478	10.33
134	0	2: 1:12	0.2658	11.78
143	0	2: 2:16	0.2838	12.70
END FLOW 1				
START SHUTIN 1				
148	0	2: 2:55	0.2944	51.53
151	0	2: 3:21	0.3016	134.77
158	0	2: 4:26	0.3199	420.59
166	0	2: 5:32	0.3382	575.04
174	0	2: 6:34	0.3554	660.10
182	0	2: 7:36	0.3725	730.36
190	0	2: 8:36	0.3892	780.26
199	0	2: 9:43	0.4078	819.99
208	0	2:10:49	0.4263	853.23
217	0	2:11:55	0.4446	875.38
226	0	2:13: 1	0.4629	895.67
235	0	2:14: 7	0.4811	910.42
244	0	2:15:12	0.4992	924.24
253	0	2:16:17	0.5174	935.28
262	0	2:17:23	0.5355	943.55
271	0	2:18:28	0.5536	951.82
280	0	2:19:33	0.5717	960.09
289	0	2:20:38	0.5898	966.51
298	0	2:21:43	0.6079	973.85
307	0	2:22:48	0.6259	977.49
316	0	2:23:53	0.6440	982.99
325	0	2:24:58	0.6621	986.63
334	0	2:26: 3	0.6801	990.27
343	0	2:27: 8	0.6981	993.92
352	0	2:28:13	0.7162	996.63
361	0	2:29:18	0.7342	999.35
370	0	2:30:23	0.7522	1002.02
379	0	2:31:27	0.7702	1003.78
388	0	2:32:32	0.7883	1006.44
397	0	2:33:37	0.8063	1009.10
406	0	2:34:42	0.8243	1010.85
415	0	2:35:47	0.8423	1012.60
424	0	2:36:52	0.8603	1014.36
433	0	2:37:57	0.8783	1015.21
442	0	2:39: 1	0.8963	1015.15

WESTERN TESTING CO., INC.

Company: NOBLE PETROLEUM, INC.
 Well: #1 BARNES & CHENOWETH
 Field: TKT 22297 DST 1

[Monday: Dec. 23, 1996]
 Page 2

REC #	DAY	REAL TIME	DT (HRS)	BHP (PSIA)
451	0	2:40: 6	0.9143	1016.90
460	0	2:41:11	0.9323	1018.66
469	0	2:42:16	0.9503	1019.51
478	0	2:43:21	0.9683	1020.36
487	0	2:44:25	0.9863	1021.20
496	0	2:45:30	1.0043	1022.05
505	0	2:46:35	1.0223	1022.90
514	0	2:47:40	1.0403	1023.75
523	0	2:48:45	1.0583	1024.64
END SHUTIN 1				
START FLOW 2				
528	0	2:49:27	1.0700	69.40
531	0	2:49:48	1.0760	69.38
540	0	2:50:53	1.0940	71.17
549	0	2:51:58	1.1119	63.72
558	0	2:53: 2	1.1298	58.11
567	0	2:54: 7	1.1477	54.35
576	0	2:55:11	1.1657	50.59
585	0	2:56:16	1.1836	49.61
594	0	2:57:21	1.2016	48.63
603	0	2:58:25	1.2196	46.72
612	0	2:59:30	1.2376	46.66
621	0	3: 0:35	1.2555	45.68
630	0	3: 1:39	1.2735	45.62
639	0	3: 2:44	1.2915	45.56
648	0	3: 3:49	1.3095	44.58
657	0	3: 4:54	1.3275	45.45
666	0	3: 5:59	1.3455	49.09
END FLOW 2				
START SHUTIN 2				
672	0	3: 6:43	1.3580	82.36
674	0	3: 7: 2	1.3632	164.68
682	0	3: 8:11	1.3823	372.79
690	0	3: 9:15	1.4001	492.08
698	0	3:10:18	1.4176	594.72
706	0	3:11:19	1.4344	651.10
714	0	3:12:19	1.4512	704.70
723	0	3:13:26	1.4699	750.90
732	0	3:14:33	1.4883	782.30
741	0	3:15:39	1.5067	809.07
750	0	3:16:45	1.5250	828.44
759	0	3:17:50	1.5432	845.96
768	0	3:18:56	1.5615	863.48
777	0	3:20: 1	1.5797	876.38
786	0	3:21: 7	1.5978	887.42
795	0	3:22:12	1.6159	897.54
804	0	3:23:17	1.6341	905.81
813	0	3:24:22	1.6522	914.08
822	0	3:25:28	1.6702	919.57
831	0	3:26:33	1.6883	925.06
840	0	3:27:38	1.7064	930.56
849	0	3:28:43	1.7244	934.20
858	0	3:29:48	1.7425	939.69
867	0	3:30:53	1.7605	943.34
876	0	3:31:57	1.7785	946.98

WESTERN TESTING CO., INC.

Company: NOBLE PETROLEUM, INC.
Well: #1 BARNES & CHENOWETH
Field: TKT 22297 DST 1

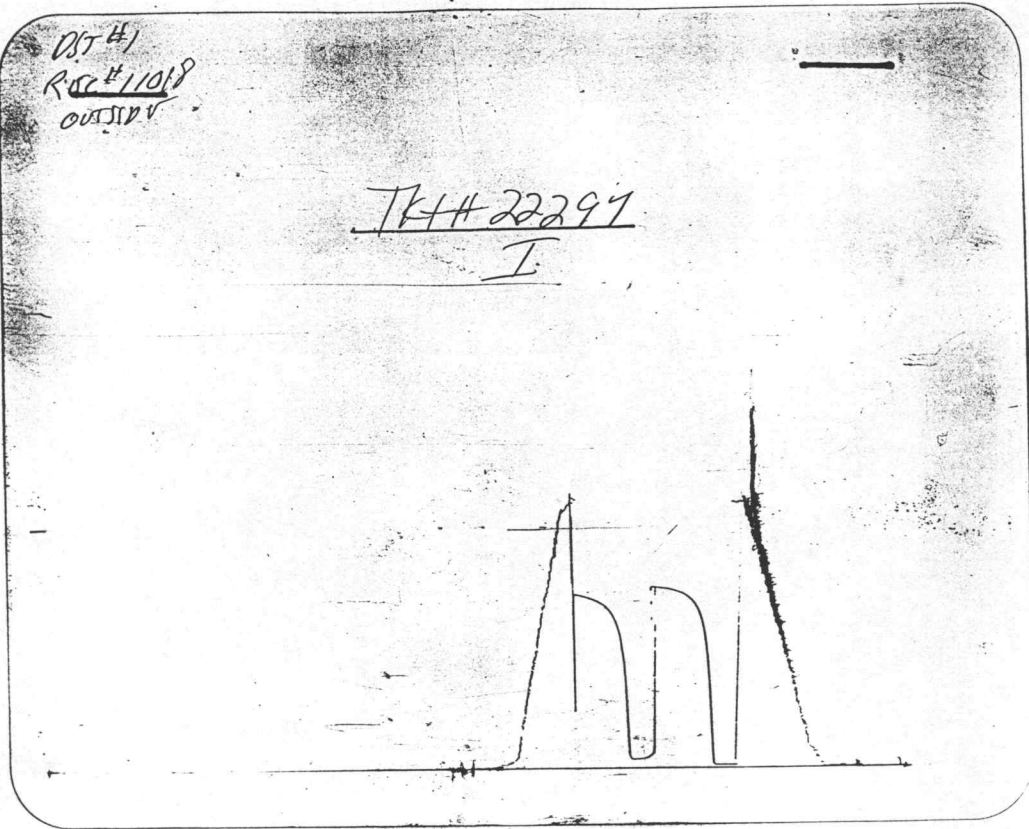
[Monday: Dec. 23, 1996]
Page 3

REC #	DAY	REAL TIME	DT (HRS)	BHP (PSIA)
885	0	3:33: 2	1.7966	950.62
894	0	3:34: 7	1.8146	953.34
903	0	3:35:12	1.8327	956.98
912	0	3:36:17	1.8507	958.78
921	0	3:37:22	1.8687	962.42
930	0	3:38:27	1.8867	964.21
939	0	3:39:32	1.9047	966.93
948	0	3:40:37	1.9228	968.72
957	0	3:41:42	1.9408	971.44
966	0	3:42:46	1.9588	973.23
975	0	3:43:51	1.9768	975.03
984	0	3:44:56	1.9948	976.82
993	0	3:46: 1	2.0128	978.61
1002	0	3:47: 6	2.0308	980.41
1011	0	3:48:11	2.0489	982.20
1020	0	3:49:15	2.0669	984.02

WESTERN TESTING CO., INC.

DST #1
RSC #11018
OUTSIDE

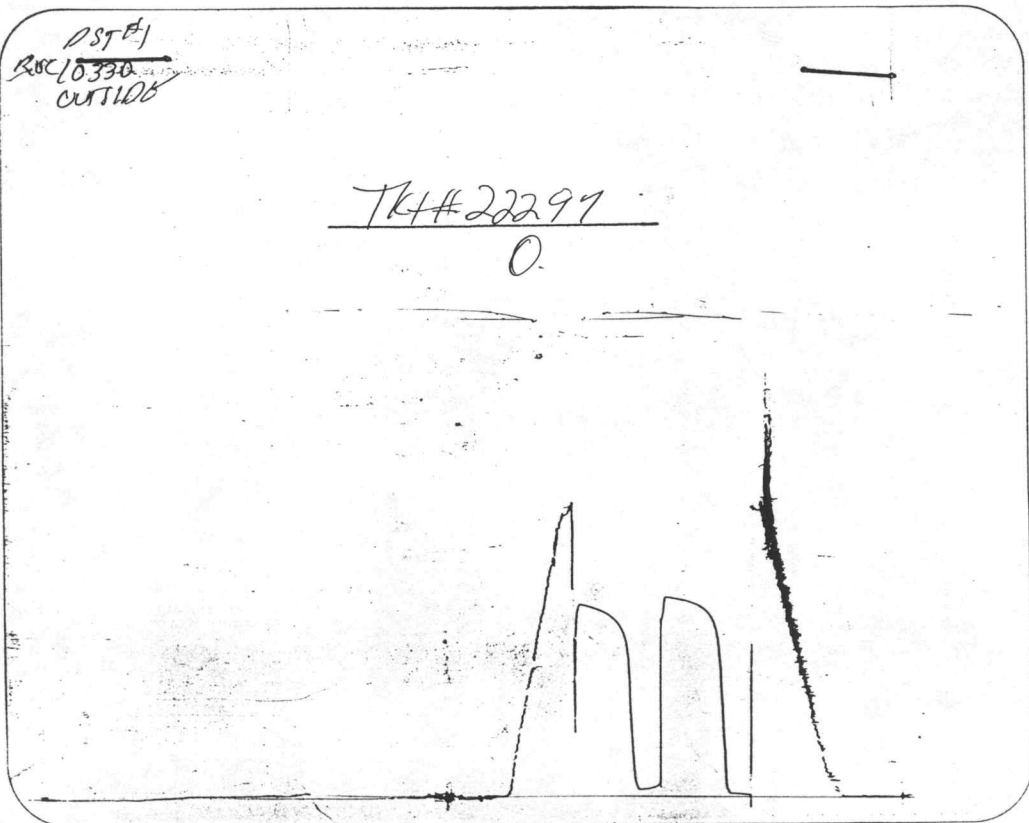
TK# 22297
I



Inside Recorder

DST #1
RSC 10330
OUTSIDE

TK# 22297
O



DST REPORT

GENERAL INFORMATION

DATE : 12/28/96
CUSTOMER : NOBLE PETROLEUM INC
WELL : #1 TEST: 2
ELEVATION:
SECTION : 26
RANGE : 6E COUNTY: COWLEY
GAUGE SN#: 1562 RANGE : 3900
TICKET : 21892
LEASE : BARNES & CHENOWETH
GEOLOGIST: HONAS
FORMATION: ARBUCKLE
TOWNSHIP : 30S
STATE : KS
CLOCK : 12

WELL INFORMATION

PERFORATION INTERVAL FROM: 3322.00 ft TO: 3338.00 ft TVD: 3338.0 ft
DEPTH OF SELECTIVE ZONE: TEST TYPE: OIL
DEPTH OF RECORDERS: 3323.0 ft 3327.0 ft
TEMPERATURE: 110.0
DRILL COLLAR LENGTH: 240.0 ft I.D.: 2.200 in
WEIGHT PIPE LENGTH : 0.0 ft I.D.: 0.000 in
DRILL PIPE LENGTH : 3062.0 ft I.D.: 3.800 in
TEST TOOL LENGTH : 20.0 ft TOOL SIZE : 5.500 in
ANCHOR LENGTH : 16.0 ft ANCHOR SIZE: 5.500 in
SURFACE CHOKE SIZE : 0.750 in BOTTOM CHOKE SIZE: 0.750 in
MAIN HOLE SIZE : 7.875 in TOOL JOINT SIZE : 4.5XH
PACKER DEPTH: 3317.0 ft SIZE: 6.630 in
PACKER DEPTH: 3322.0 ft SIZE: 6.630 in
PACKER DEPTH: 0.0 ft SIZE: 0.000 in
PACKER DEPTH: 0.0 ft SIZE: 0.000 in

MUD INFORMATION

DRILLING CON. : BERENTZ DRILLING
MUD TYPE : CHEMICAL VISCOSITY : 35.00 cp
WEIGHT : 9.400 ppg WATER LOSS: 9.600 cc
CHLORIDES : 600 ppm
JARS-MAKE :
DID WELL FLOW?: NO SERIAL NUMBER:
REVERSED OUT?: NO

COMMENTS

Comment

WEAK TO STRONG BLOW OFF BOTTOM OF BUCKET IN 8 MIN.
ON INITIAL FLOW PERIOD. WEAK TO A STRONG BLOW
OFF BOTTOM OF BUCKET IN 14 MIN. ON FINAL FLOW

DST REPORT (CONTINUED)

COMMENTS (CONTINUED)

Comment

PERIOD.

FLUID RECOVERY

Feet of Fluid	% Oil	% Gas	% Water	% Mud	Comments
970.0	0.0	0.0	100.0	0.0	SULPHUR WATER

RATE INFORMATION

OIL VOLUME:	0.0000	STB		
GAS VOLUME:	0.0000	SCF	TOTAL FLOW TIME:	90.0000 min.
MUD VOLUME:	0.0000	STB	AVERAGE OIL RATE:	0.0000 STB/D
WATER VOLUME:	11.3676	STB	AVERAGE WATER RATE:	181.8810 STB/D
TOTAL FLUID :	11.3676	STB		

FIELD TIME & PRESSURE INFORMATION

INITIAL HYDROSTATIC PRESSURE: 1658.00

Description	Duration	p1	p End
INITIAL FLOW	45.00	120.00	290.00
INITIAL SHUT-IN	45.00		1243.00
FINAL FLOW	45.00	350.00	450.00
FINAL SHUT-IN	45.00		1243.00

FINAL HYDROSTATIC PRESSURE: 1638.00

DST REPORT (CONTINUED)

OFFICE TIME & PRESSURE INFORMATION

INITIAL HYDROSTATIC PRESSURE: 1660.00

<u>Description</u>	<u>Duration</u>	<u>p1</u>	<u>p End</u>
INITIAL FLOW	45.00	115.86	534.65
INITIAL SHUT-IN	45.00		1226.18
FINAL FLOW	45.00	357.28	516.28
FINAL SHUT-IN	45.00		1228.59

FINAL HYDROSTATIC PRESSURE: 1642.00

GAS FLOW REPORT

GENERAL INFORMATION

DATE : 12/28/96	TICKET : 21892
CUSTOMER : NOBLE PETROLEUM INC	LEASE : BARNES & CHENOWETH
WELL : #1	TEST: 2
ELEVATION:	GEOLOGIST: HONAS
SECTION : 26	FORMATION: ARBUCKLE
RANGE : 6E	TOWNSHIP : 30S
GAUGE SN#: 1562	STATE : KS
COUNTY: COWLEY	CLOCK : 12
RANGE : 3900	

PRE FLOW

Time Guage (min)	Tester Type	Orifice Size	Pressure	Flow Desc.
---------------------	----------------	-----------------	----------	------------

SECOND FLOW

Time Guage (min)	Tester Type	Orifice Size	Pressure	Flow Desc.
13 MIN.		0.000	GAS TO SURF.	0 SCF/D
15 MIN.	MERLA	0.250	1" OF WTR.	1680 SCF/D
20 MIN.	MERLA	0.250	2" OF WTR.	2370 SCF/D
30 MIN.	MERLA	0.250	2" OF WTR.	2370 SCF/D
40 MIN.	MERLA	0.250	1" OF WTR.	1680 SCF/D
50 MIN.	MERLA	0.250	2" OF WTR.	2370 SCF/D
60 MIN.	MERLA	0.250	2" OF WTR.	2370 SCF/D

Company: NOBLE PETROLEUM
Well: #1 BARNES & CHENOWTH
Field: DST #2 TKT #21892

[Saturday: Dec. 28, 1996]
Page 1

REC #	DAY	REAL TIME	DT (HRS)	BHP (PSIA)

START FLOW 1				
1	0	0: 0:55	0.0000	115.86
6	0	0: 1:31	0.0100	115.87
11	0	0: 2: 7	0.0200	115.88
16	0	0: 2:43	0.0300	115.89
21	0	0: 3:19	0.0400	116.74
26	0	0: 3:55	0.0500	117.58
31	0	0: 4:31	0.0599	119.26
36	0	0: 5: 7	0.0699	120.93
41	0	0: 5:42	0.0799	122.61
46	0	0: 6:18	0.0899	125.12
51	0	0: 6:54	0.0998	127.63
56	0	0: 7:30	0.1098	130.14
61	0	0: 8: 6	0.1198	131.81
66	0	0: 8:42	0.1298	135.16
71	0	0: 9:18	0.1398	137.66
76	0	0: 9:54	0.1497	140.17
81	0	0:10:30	0.1597	142.68
86	0	0:11: 6	0.1697	145.19
91	0	0:11:42	0.1796	146.87
96	0	0:12:17	0.1896	150.21
101	0	0:12:53	0.1996	152.72
106	0	0:13:29	0.2096	154.39
111	0	0:14: 5	0.2195	157.74
116	0	0:14:41	0.2295	159.41
121	0	0:15:17	0.2395	161.92
126	0	0:15:53	0.2495	165.26
131	0	0:16:29	0.2594	167.77
136	0	0:17: 5	0.2694	171.11
141	0	0:17:41	0.2794	172.79
146	0	0:18:17	0.2894	176.13
151	0	0:18:53	0.2994	177.81
156	0	0:19:28	0.3093	181.15
161	0	0:20: 4	0.3193	182.83
166	0	0:20:40	0.3293	186.17
171	0	0:21:16	0.3392	188.68
176	0	0:21:52	0.3492	191.19
181	0	0:22:28	0.3592	193.69
186	0	0:23: 4	0.3692	197.04
191	0	0:23:40	0.3792	200.38
196	0	0:24:16	0.3891	202.89
201	0	0:24:52	0.3991	206.23
206	0	0:25:27	0.4091	209.57
211	0	0:26: 3	0.4190	212.08
216	0	0:26:39	0.4290	215.42
221	0	0:27:15	0.4390	217.93
226	0	0:27:51	0.4490	220.44
231	0	0:28:27	0.4589	223.78
236	0	0:29: 3	0.4689	226.29
241	0	0:29:39	0.4789	229.63
246	0	0:30:15	0.4888	232.97
251	0	0:30:51	0.4988	235.48
256	0	0:31:27	0.5088	237.99
261	0	0:32: 2	0.5188	240.50
266	0	0:32:38	0.5288	243.84

WESTERN TESTING CO., INC.

Company: NOBLE PETROLEUM
Well: #1 BARNES & CHENOWTH
Field: DST #2 TKT #21892

[Saturday: Dec. 28, 1996]
Page 2

REC #	DAY	REAL TIME	DT (HRS)	BHP (PSIA)
271	0	0:33:14	0.5387	246.35
276	0	0:33:50	0.5487	248.86
281	0	0:34:26	0.5587	251.37
286	0	0:35: 2	0.5687	253.88
291	0	0:35:38	0.5786	255.55
296	0	0:36:14	0.5886	258.06
301	0	0:36:50	0.5986	260.57
306	0	0:37:26	0.6086	263.08
311	0	0:38: 2	0.6185	266.42
316	0	0:38:37	0.6285	268.93
321	0	0:39:13	0.6385	271.44
326	0	0:39:49	0.6485	273.95
331	0	0:40:25	0.6584	276.46
336	0	0:41: 1	0.6684	278.97
341	0	0:41:37	0.6783	286.47
346	0	0:42:12	0.6882	303.97
351	0	0:42:48	0.6981	323.96
356	0	0:43:23	0.7079	356.45
361	0	0:43:58	0.7174	428.90
366	0	0:44:31	0.7267	534.65
		END FLOW 1		
		START SHUTIN 1		
371	0	0:45: 1	0.7352	776.96
376	0	0:45:33	0.7439	980.97
381	0	0:46: 4	0.7526	1174.00
386	0	0:46:40	0.7625	1182.18
391	0	0:47:16	0.7725	1186.27
396	0	0:47:52	0.7825	1189.54
401	0	0:48:28	0.7924	1192.00
406	0	0:49: 4	0.8024	1195.28
411	0	0:49:39	0.8124	1196.92
416	0	0:50:15	0.8224	1199.38
421	0	0:50:51	0.8324	1201.03
426	0	0:51:27	0.8423	1202.67
431	0	0:52: 3	0.8523	1204.31
436	0	0:52:39	0.8623	1205.96
441	0	0:53:15	0.8723	1206.78
446	0	0:53:51	0.8823	1208.43
451	0	0:54:27	0.8923	1209.26
456	0	0:55: 3	0.9022	1210.90
461	0	0:55:39	0.9122	1211.73
466	0	0:56:15	0.9222	1213.37
471	0	0:56:51	0.9322	1214.20
476	0	0:57:27	0.9422	1215.84
481	0	0:58: 3	0.9521	1216.67
486	0	0:58:39	0.9621	1216.68
491	0	0:59:14	0.9721	1217.50
496	0	0:59:50	0.9821	1218.33
501	0	1: 0:26	0.9921	1219.16
506	0	1: 1: 2	1.0021	1219.17
511	0	1: 1:38	1.0121	1220.00
516	0	1: 2:14	1.0221	1220.01
521	0	1: 2:50	1.0321	1220.84
526	0	1: 3:26	1.0420	1220.85
531	0	1: 4: 2	1.0520	1220.86

WESTERN TESTING CO., INC.

Company: NOBLE PETROLEUM
 Well: #1 BARNES & CHENOWETH
 Field: DST #2 TKT #21892

[Saturday: Dec. 28, 1996]
 Page 3

REC #	DAY	REAL TIME	DT (HRS)	BHP (PSIA)
536	0	1: 4:38	1.0620	1221.68
541	0	1: 5:14	1.0720	1221.70
546	0	1: 5:50	1.0820	1222.52
551	0	1: 6:26	1.0920	1222.53
556	0	1: 7: 2	1.1020	1222.54
561	0	1: 7:38	1.1120	1222.55
566	0	1: 8:14	1.1220	1222.57
571	0	1: 8:50	1.1320	1223.39
576	0	1: 9:26	1.1419	1223.40
581	0	1:10: 2	1.1519	1223.41
586	0	1:10:38	1.1619	1224.24
591	0	1:11:14	1.1719	1224.25
596	0	1:11:50	1.1819	1224.26
601	0	1:12:26	1.1919	1225.09
606	0	1:13: 2	1.2019	1225.10
611	0	1:13:38	1.2119	1225.11
616	0	1:14:14	1.2219	1225.12
621	0	1:14:50	1.2319	1225.95
626	0	1:15:25	1.2418	1225.96
631	0	1:16: 1	1.2518	1225.97
636	0	1:16:37	1.2618	1225.98
641	0	1:17:13	1.2718	1225.99
646	0	1:17:49	1.2818	1226.00
651	0	1:18:25	1.2918	1226.02
656	0	1:19: 1	1.3018	1226.03
661	0	1:19:37	1.3118	1226.04
666	0	1:20:13	1.3218	1226.05
671	0	1:20:49	1.3318	1226.06
676	0	1:21:25	1.3418	1226.07
681	0	1:22: 1	1.3518	1226.08
686	0	1:22:37	1.3617	1226.09
691	0	1:23:13	1.3717	1226.10
696	0	1:23:49	1.3817	1226.11
701	0	1:24:25	1.3917	1226.12
706	0	1:25: 1	1.4017	1226.13
711	0	1:25:37	1.4117	1226.15
716	0	1:26:13	1.4217	1226.16
721	0	1:26:49	1.4317	1226.17
726	0	1:27:25	1.4417	1226.18
		END SHUTIN 1		
		START FLOW 2		
728	0	1:28:42	1.4632	357.28
733	0	1:29:19	1.4732	355.63
738	0	1:29:55	1.4832	353.98
743	0	1:30:31	1.4932	352.32
748	0	1:31: 7	1.5032	350.67
753	0	1:31:43	1.5133	349.85
758	0	1:32:18	1.5232	349.86
763	0	1:32:54	1.5332	349.04
768	0	1:33:30	1.5432	349.05
773	0	1:34: 6	1.5532	349.06
778	0	1:34:42	1.5632	349.07
783	0	1:35:18	1.5732	349.08
788	0	1:35:54	1.5832	349.92
793	0	1:36:30	1.5932	350.77

WESTERN TESTING CO., INC.

Company: NOBLE PETROLEUM
Well: #1 BARNES & CHENOWTH
Field: DST #2 TKT #21892

[Saturday: Dec. 28, 1996]
Page 4

REC #	DAY	REAL TIME	DT (HRS)	BHP (PSIA)
798	0	1:37: 6	1.6032	350.78
803	0	1:37:42	1.6131	352.45
808	0	1:38:18	1.6231	352.47
813	0	1:38:54	1.6331	353.31
818	0	1:39:30	1.6431	354.99
823	0	1:40: 6	1.6531	356.66
828	0	1:40:42	1.6631	357.51
833	0	1:41:18	1.6731	359.18
838	0	1:41:54	1.6830	360.03
843	0	1:42:30	1.6930	361.70
848	0	1:43: 6	1.7030	363.38
853	0	1:43:42	1.7130	365.05
858	0	1:44:18	1.7230	366.73
863	0	1:44:53	1.7329	368.41
868	0	1:45:29	1.7429	370.08
873	0	1:46: 5	1.7529	371.76
878	0	1:46:41	1.7629	373.44
883	0	1:47:17	1.7729	375.11
888	0	1:47:53	1.7829	377.62
893	0	1:48:29	1.7928	379.30
898	0	1:49: 5	1.8028	380.97
903	0	1:49:41	1.8128	383.48
908	0	1:50:17	1.8228	385.16
913	0	1:50:53	1.8328	386.84
918	0	1:51:29	1.8427	388.51
923	0	1:52: 5	1.8527	390.19
928	0	1:52:41	1.8627	391.87
933	0	1:53:16	1.8727	394.37
938	0	1:53:52	1.8826	396.05
943	0	1:54:28	1.8926	397.73
948	0	1:55: 4	1.9026	400.24
953	0	1:55:40	1.9126	401.91
958	0	1:56:16	1.9226	403.59
963	0	1:56:52	1.9325	406.10
968	0	1:57:28	1.9425	408.61
973	0	1:58: 4	1.9525	411.12
978	0	1:58:40	1.9625	413.62
983	0	1:59:16	1.9725	416.13
988	0	1:59:52	1.9824	417.81
993	0	2: 0:27	1.9924	420.32
998	0	2: 1: 3	2.0024	422.83
1003	0	2: 1:39	2.0124	425.34
1008	0	2: 2:15	2.0223	427.85
1013	0	2: 2:51	2.0323	430.35
1018	0	2: 3:27	2.0423	432.86
1023	0	2: 4: 3	2.0523	435.37
1028	0	2: 4:39	2.0622	437.88
1033	0	2: 5:15	2.0722	440.39
1038	0	2: 5:51	2.0822	442.90
1043	0	2: 6:27	2.0922	445.41
1048	0	2: 7: 2	2.1021	448.75
1053	0	2: 7:38	2.1121	451.26
1058	0	2: 8:14	2.1221	453.77
1063	0	2: 8:50	2.1321	455.44
1068	0	2: 9:26	2.1420	458.79

WESTERN TESTING CO., INC.

Company: NOBLE PETROLEUM
Well: #1 BARNES & CHENOWTH
Field: DST #2 TKT #21892

[Saturday: Dec. 28, 1996]
Page 5

REC #	DAY	REAL TIME	DT (HRS)	BHP (PSIA)
1073	0	2:10: 2	2.1520	462.13
1078	0	2:10:38	2.1619	476.29
1083	0	2:11:13	2.1718	492.12
1088	0	2:11:49	2.1816	516.28
		END FLOW 2		
		START SHUTIN 2		
1093	0	2:12:24	2.1913	559.59
1098	0	2:12:55	2.2001	760.27
1104	0	2:13:29	2.2096	1142.93
1109	0	2:14: 4	2.2193	1181.31
1114	0	2:14:40	2.2293	1187.03
1119	0	2:15:16	2.2392	1190.31
1124	0	2:15:52	2.2492	1194.40
1129	0	2:16:28	2.2592	1196.05
1134	0	2:17: 4	2.2692	1199.32
1139	0	2:17:40	2.2792	1200.97
1144	0	2:18:16	2.2891	1202.61
1149	0	2:18:52	2.2991	1205.07
1154	0	2:19:28	2.3091	1206.71
1159	0	2:20: 3	2.3191	1208.36
1164	0	2:20:39	2.3291	1210.00
1169	0	2:21:15	2.3390	1210.83
1174	0	2:21:51	2.3490	1212.47
1179	0	2:22:27	2.3590	1214.11
1184	0	2:23: 3	2.3690	1214.94
1189	0	2:23:39	2.3790	1216.58
1194	0	2:24:15	2.3890	1217.41
1199	0	2:24:51	2.3989	1218.24
1204	0	2:25:27	2.4089	1219.07
1209	0	2:26: 3	2.4189	1219.08
1214	0	2:26:39	2.4289	1219.90
1219	0	2:27:15	2.4389	1220.73
1224	0	2:27:51	2.4489	1220.74
1229	0	2:28:27	2.4589	1221.57
1234	0	2:29: 3	2.4689	1222.40
1239	0	2:29:39	2.4788	1223.22
1244	0	2:30:15	2.4888	1224.05
1249	0	2:30:51	2.4988	1224.06
1254	0	2:31:27	2.5088	1224.07
1259	0	2:32: 3	2.5188	1224.08
1264	0	2:32:38	2.5288	1224.91
1269	0	2:33:14	2.5388	1224.92
1274	0	2:33:50	2.5488	1225.75
1279	0	2:34:26	2.5588	1225.76
1284	0	2:35: 2	2.5687	1226.59
1289	0	2:35:38	2.5787	1226.60
1294	0	2:36:14	2.5887	1226.61
1299	0	2:36:50	2.5987	1226.62
1304	0	2:37:26	2.6087	1226.63
1309	0	2:38: 2	2.6187	1227.46
1314	0	2:38:38	2.6287	1227.47
1319	0	2:39:14	2.6387	1227.48
1324	0	2:39:50	2.6487	1227.49
1329	0	2:40:26	2.6587	1227.50
1334	0	2:41: 2	2.6687	1227.51

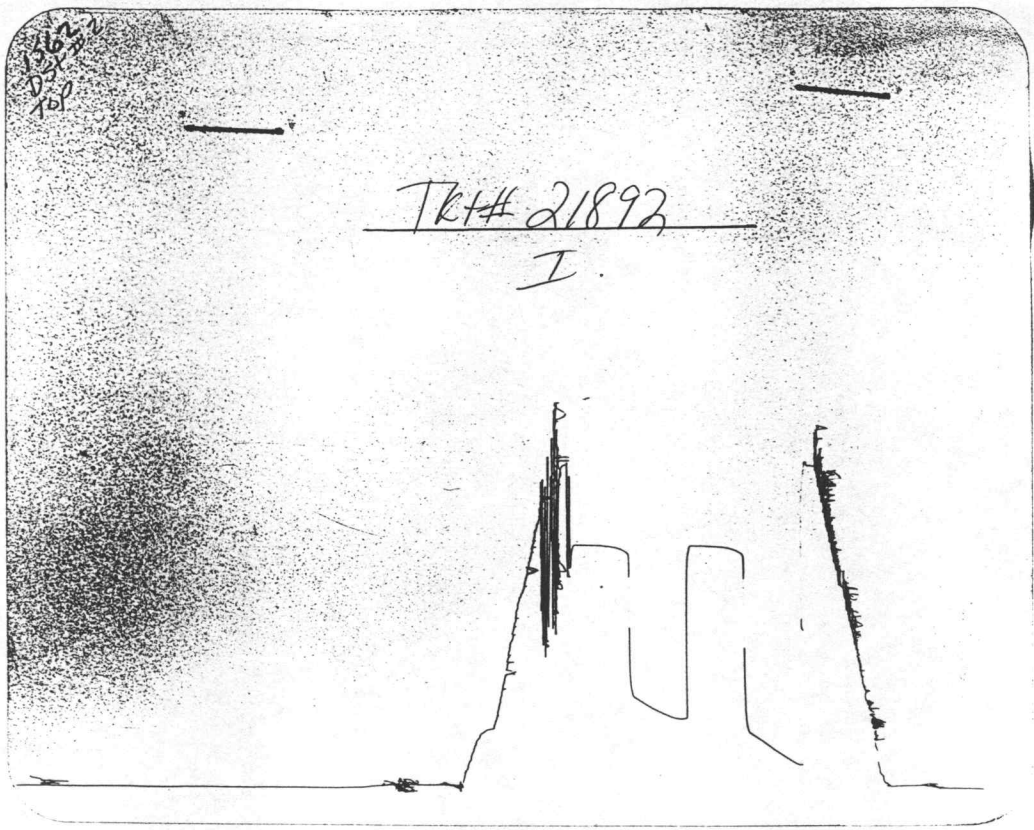
WESTERN TESTING CO., INC.

Company: NOBLE PETROLEUM
Well: #1 BARNES & CHENOWTH
Field: DST #2 TKT #21892

[Saturday: Dec. 28, 1996]
Page 6

REC #	DAY	REAL TIME	DT (HRS)	BHP (PSIA)
1339	0	2:41:38	2.6787	1227.52
1344	0	2:42:14	2.6886	1227.53
1349	0	2:42:50	2.6986	1227.54
1354	0	2:43:26	2.7086	1228.37
1359	0	2:44: 2	2.7186	1228.38
1364	0	2:44:38	2.7286	1228.39
1369	0	2:45:14	2.7386	1228.40
1374	0	2:45:50	2.7486	1228.42
1379	0	2:46:26	2.7586	1228.43
1384	0	2:47: 2	2.7686	1228.44
1389	0	2:47:38	2.7786	1228.45
1394	0	2:48:14	2.7886	1228.46
1399	0	2:48:50	2.7985	1228.47
1404	0	2:49:26	2.8085	1228.48
1409	0	2:50: 2	2.8185	1228.49
1414	0	2:50:38	2.8285	1228.50
1419	0	2:51:13	2.8385	1228.51
1424	0	2:51:49	2.8485	1228.52
1429	0	2:52:25	2.8585	1228.53
1434	0	2:53: 1	2.8685	1228.55
1439	0	2:53:37	2.8785	1228.56
1444	0	2:54:13	2.8885	1228.57
1449	0	2:54:49	2.8985	1228.58
1454	0	2:55:25	2.9085	1228.59

WESTERN TESTING CO., INC.



Inside Recorder

