



WESTERN TESTING CO., INC.

FORMATION TESTING

TICKET

Nº

4082

OK

P. O. BOX 1599 PHONE (316) 262-5861

Elevation

Formation Cattelmans

Eff. Pay Ft.

WICHITA, KANSAS 67201

District Augusta

Date 8-14-84

Customer Order No.

COMPANY NAME

Stellbar Oil Corporation

ADDRESS

450 South Financial Center Wichita Ka

LEASE AND WELL NO.

E.D. Shaver # C-1

COUNTY Cowley

STATE Ka

Sec. 23

Twp. 30

Rge. 4E

Mail Invoice To

Same #1 "C" EBS

No. Copies Requested 1

Mail Charts To

Same

No. Copies Requested 5

Formation Test No. 1

Interval Tested From 2830

ft. to 2855

ft. Total Depth 2855 ft.

Packer Depth 2830

ft. Size 6 3/4 in.

Packer Depth

ft.

Size in.

Packer Depth 2825

ft. Size 6 3/4 in.

Packer Depth

ft.

Size in.

Depth of Selective Zone Set

Top Recorder Depth (Inside)

2835 ft.

Recorder Number 3474

Cap. 3000

Bottom Recorder Depth (Outside)

2840 ft.

Recorder Number 2605

Cap. 4150

Below Straddle Recorder Depth

Recorder Number

Cap.

Drilling Contractor

Range Drilg #2

Drill Collar Length 120

I. D. 2.25 in.

Mud Type Chem

Viscosity 40

Weight Pipe Length

I. D. in.

Weight 9.7

Water Loss B.2 cc.

Drill Pipe Length 2690

I. D. 38 in.

Chlorides 1900

P.P.M.

Test Tool Length 20 ft.

Tool Size 5 1/2 in.

Jars: Make NO

Serial Number

Anchor Length 25 ft.

Size 5 1/2 in.

Did Well Flow?

Reversed Out

Surface Choke Size 3/4 in.

Bottom Choke Size 3/4 in.

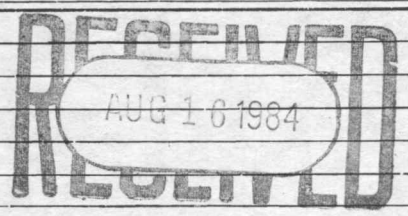
Main Hole Size 7 7/8 in.

Tool Joint Size 4 1/2 in.

Blow: good blow throughout test

Recovered 715 ft. of gas in pipe  
 Recovered 5 ft. of free gassy oil  
 Recovered 60 ft. of mud cut gassy oil  
 Recovered 60 ft. of oil cut mud  
 Recovered \_\_\_\_\_ ft. of \_\_\_\_\_

80% Oil  
30% Oil



Chlorides \_\_\_\_\_ P.P.M. Sample Jars used \_\_\_\_\_ Remarks: \_\_\_\_\_

Time On Location 3:00 A.M. Time Pick Up Tool \_\_\_\_\_ P.M. Time Off Location \_\_\_\_\_ A.M.  
P.M. P.M. P.M.

Time Set Packer(s) 8:35 A.M. Time Started Off Bottom 11:30 A.M. Maximum Temperature 116  
P.M. P.M. P.M.

Initial Hydrostatic Pressure (A) 1446 P.S.I.  
 Initial Flow Period Minutes 30 (B) 53 P.S.I. to (C) 45 P.S.I.  
 Initial Closed In Period Minutes 30 (D) 454 P.S.I.  
 Final Flow Period Minutes 60 (E) 53 P.S.I. to (F) 68 P.S.I.  
 Final Closed In Period Minutes 60 (G) 1484 P.S.I.  
 Final Hydrostatic Pressure (H) 1446 P.S.I.

COMPANY TERMS

Western Testing Co., Inc. shall not be liable for damages of any kind to the property or personnel of the one for whom a test is made or for any loss suffered or sustained directly or indirectly through the use of its equipment, of its statements or opinion concerning the results of any test. Tools lost or damaged in the hole shall be paid at cost by the party for whom the test is made.

All charges subject to 12% interest after 60 days from date of invoice. Any expense incurred for collection will be added to the original amount.

Test Approved By Joe M. Kuhl  
Signature of Customer or his authorized representative

Western Representative Kenny Kirkland 1127

FIELD INVOICE

Open Hole Test	\$ <u>550.00</u>
Misrun	\$ _____
Straddle Test	\$ _____
Jars	\$ _____
Selective Zone	\$ _____
Safety Joint	\$ _____
Standby	\$ _____
Evaluation	\$ _____
Extra Packer	\$ _____
Circ. Sub.	\$ _____
Mileage	\$ _____
Fluid Sampler	\$ _____
Extra Charts	\$ _____
Insurance	\$ _____
Telecopier	\$ _____
TOTAL	\$ <u>550.00</u>

WESTERN TESTING CO., INC.

Pressure Data

Date 8-14-84

Test Ticket No. 4082

Recorder No. 3474

Capacity \_\_\_\_\_ Location \_\_\_\_\_ Ft.

Clock No. \_\_\_\_\_ Elevation \_\_\_\_\_ Well Temperature \_\_\_\_\_ °F

Point	Pressure	Time Given	Time Computed
A Initial Hydrostatic Mud	<u>1447</u> P.S.I.		
B First Initial Flow Pressure	<u>48</u> P.S.I.	<u>30</u> Mins.	<u>30</u> Mins.
C First Final Flow Pressure	<u>48</u> P.S.I.	<u>30</u> Mins.	<u>30</u> Mins.
D Initial Closed-in Pressure	<u>454</u> P.S.I.	<u>60</u> Mins.	<u>60</u> Mins.
E Second Initial Flow Pressure	<u>60</u> P.S.I.	<u>60</u> Mins.	<u>63</u> Mins.
F Second Final Flow Pressure	<u>68</u> P.S.I.		
G Final Closed-in Pressure	<u>1489</u> P.S.I.		
H Final Hydrostatic Mud	<u>1442</u> P.S.I.		

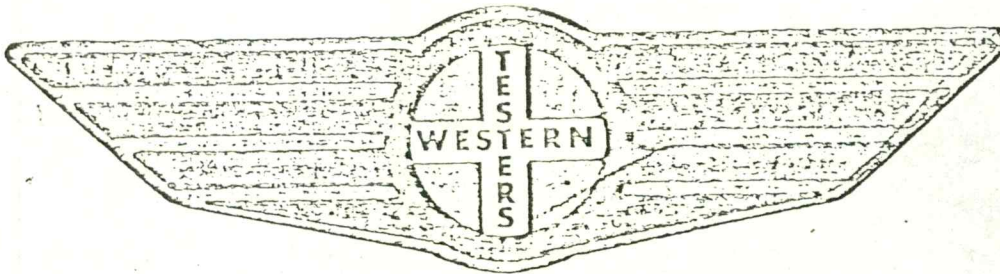
PRESSURE BREAKDOWN

First Flow Pressure		Initial Shut-In		Second Flow Pressure		Final Shut-In	
Breakdown: <u>7</u> Inc.		Breakdown: <u>11</u> Inc.		Breakdown: <u>13</u> Inc.		Breakdown: <u>22</u> Inc.	
of <u>5</u> mins. and a		of <u>3</u> mins. and a		of <u>5</u> mins. and a		of <u>3</u> mins. and a	
final inc. of <u>0</u> Min.		final inc. of <u>0</u> Min.		final inc. of <u>0</u> Min.		final inc. of <u>0</u> Min.	
Point Mins.	Press.	Point Minutes	Press.	Point Minutes	Press.	Point Minutes	Press.
P 1 0	<u>48</u>	0	<u>48</u>	0	<u>60</u>	0	<u>68</u>
P 2 5		3	<u>54</u>	5		3	<u>81</u>
P 3 10		6	<u>67</u>	10		6	<u>108</u>
P 4 15		9	<u>82</u>	15	<u>60</u>	9	<u>144</u>
P 5 20		12	<u>101</u>	20	<u>61</u>	12	<u>198</u>
P 6 25		15	<u>126</u>	25	<u>62</u>	15	<u>277</u>
P 7 30	<u>48</u>	18	<u>159</u>	30	<u>63</u>	18	<u>413</u>
P 8 35		21	<u>208</u>	35	<u>64</u>	21	<u>625</u>
P 9 40		24	<u>271</u>	40	<u>65</u>	24	<u>854</u>
P 10 45		27	<u>369</u>	45	<u>66</u>	27	<u>1047</u>
P 11 50		30	<u>454</u>	50	<u>67</u>	30	<u>1193</u>
P 12 55		33		55	<u>67</u>	33	<u>1301</u>
P 13 60		36		60	<u>68</u>	36	<u>1364</u>
P 14		39		65		39	<u>1398</u>
P 15		42		70		42	<u>1418</u>
P 16		45		75		45	<u>1435</u>
P 17		48		80		48	<u>1448</u>
P 18		51		85		51	<u>1459</u>
P 19		54		90		54	<u>1469</u>
P 20		57				57	<u>1476</u>
		60				60	<u>1483</u>
						63	<u>1489</u>

FORMATION

TEST

REPORT



Home Office:

Wichita, Kansas 67201

P.O. Box 1599

Phone (316) 262-5861

pany STEELBAR OIL CORP. Lease and Well No. #1 "C" EBS Sec. 2 Twp. 30 Rge. 4E Test No. 1 date 8/14/87

WESTERN TESTING CO. INC.  
SUBSURFACE PRESSURE SURVEY

DATE: 8/14/84  
 CUSTOMER: STELBAR OIL CORPORATION  
 WELL: 1 TEST: 1  
 ELEVATION (KB): 0 FORMATION: CATTLEMAN  
 SECTION: 2 TOWNSHIP: 30S  
 RANGE: 4E COUNTY: COWLEY STATE: KANSAS  
 GAUGE SN #3474 RANGE: 3000 CLOCK: 12

INTERVAL TEST FROM: 2830 FT TO: 2855 FT TOTAL DEPTH: 2855 FT  
 DEPTH OF SELECTIVE ZONE: FT  
 PACKER DEPTH: 2830 FT SIZE: 6 3/4 IN PACKER DEPTH: 2825 FT SIZE: 6 3/4 IN  
 PACKER DEPTH: FT SIZE: IN PACKER DEPTH: FT SIZE: IN

DRILLING CONTRACTOR: RANGE DRLG  
 MUD TYPE: CHEMICAL VISCOSITY: 40  
 WEIGHT: 9.7 WATER LOSS (CC): 13.2  
 CHLORIDES (P.P.M.): 1900  
 JARS - MAKE: NO SERIAL NUMBER:  
 DID WELL FLOW? REVERSED OUT?  
 DRILL COLLAR LENGTH: 120 FT I.D.: 2.25 IN  
 WEIGHT PIPE LENGTH: FT I.D.: IN  
 DRILL PIPE LENGTH: 2690 FT I.D.: 3.8 IN  
 TEST TOOL LENGTH: 20 FT TOOL SIZE: 5 1/2 IN  
 ANCHOR LENGTH: 25 FT SIZE: 5 1/2 IN  
 SURFACE CHOKE SIZE: 3/4 IN BOTTOM CHOKE SIZE: 3/4 IN  
 MAIN HOLE SIZE: 7 7/8 IN TOOL JOINT SIZE: 4 1/2 XH IN

BLOW: GOOD BLOW THROUGHOUT TEST.

RECOVERED: 715 FT OF: GAS ABOVE FLUID.  
 RECOVERED: 5 FT OF: FREE GASSY OIL.  
 RECOVERED: 60 FT OF: MUD CUT GASSY OIL. 80% OIL.  
 RECOVERED: 60 FT OF: OIL CUT MUD. 30% OIL.  
 RECOVERED: FT OF:  
 RECOVERED: FT OF:  
 RECOVERED: FT OF:  
 RECOVERED: FT OF:  
 RECOVERED: FT OF:

REMARKS:

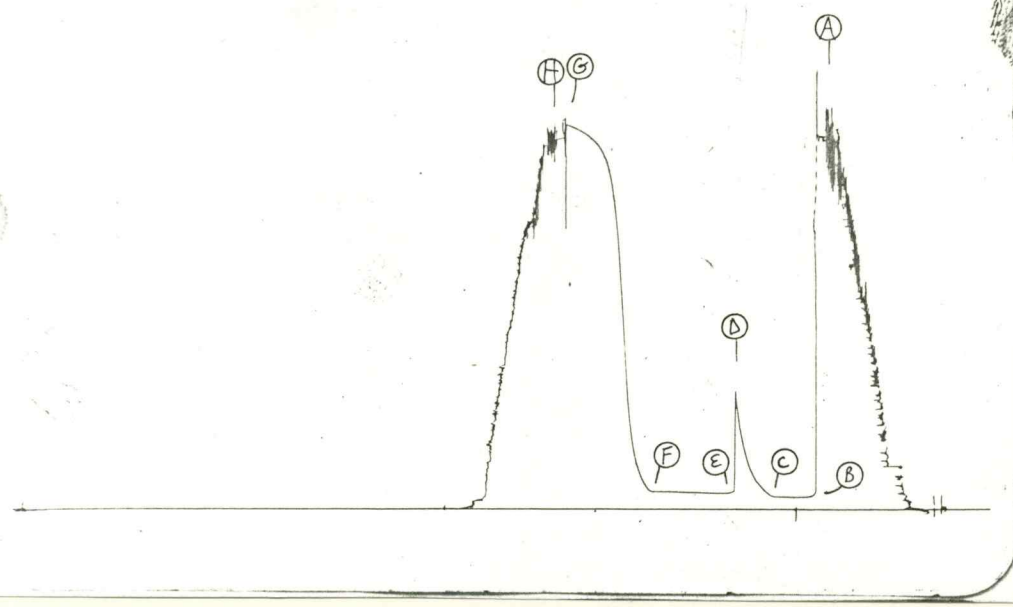
TIME SET PACKER(S): 8:35 PM TIME STARTED OFF BOTTOM: 11:30 PM  
 WELL TEMPERATURE: 116 °F  
 INITIAL HYDROSTATIC PRESSURE: (A) 1447 PSI  
 INITIAL FLOW PERIOD MIN: 30 (B) 48 PSI TO (C) 48 PSI  
 INITIAL CLOSED IN PERIOD MIN: 30 (D) 454 PSI  
 FINAL FLOW PERIOD MIN: 60 (E) 60 PSI TO (F) 68 PSI  
 FINAL CLOSED IN PERIOD MIN: 63 (G) 1489 PSI  
 FINAL HYDROSTATIC PRESSURE (H) 1442 PSI



TKT # 4082

347¢

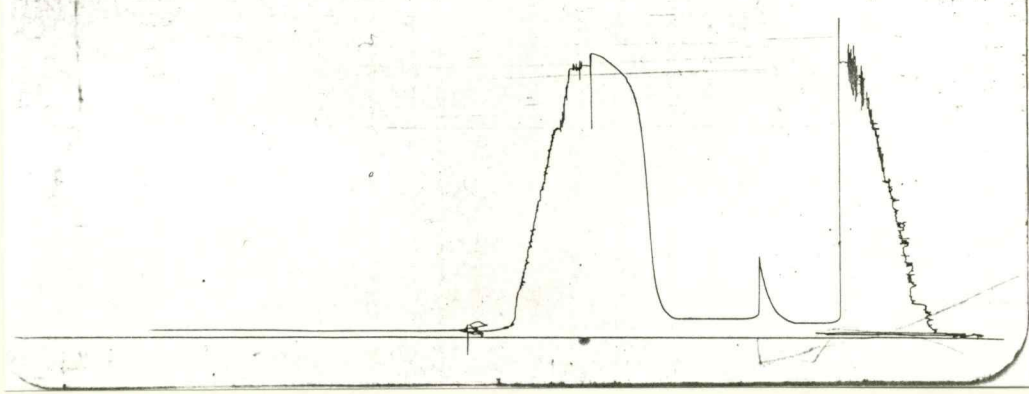
I



Inside Recorder

TKT # 4082

O



Outside Recorder

# FACTURING SERVICE TREATING REPORT

BILLED ON TICKET NO. 892214

RM # 2012 R-3

WELL DATA

Well No.                      Sec. 2 Twp. 30S Rng. 4E County Cowley State Kansas

Formation Name Bartlesville Type Sand

Formation Thickness From                      To                     

Initial Prod: Oil                      Bpd. Water                      Bpd. Gas                      Mcfd.

Essent Prod: Oil                      Bpd. Water                      Bpd. Gas                      Mcfd.

Stimulation Tool #                      Mandrel Size                      Extensions                      In.

Sticker Type                      Set At                     

Bottom Hole Temp.                      RBP@                     

Pad Or Flange                      Pbtd                     

	NEW USED	WEIGHT	SIZE	FROM	TO	MAXIMUM PSI ALLOWABLE
CASING	N	20	5 1/2		2934	
LINER						
TUBING						
OPEN HOLE						SHOTS/FT.
PERFORATIONS				2836	2838	
PERFORATIONS				2841		
PERFORATIONS						

MATERIALS

Fluid Density                      Lb./Gal. @ API

Fluid Density                      Lb./Gal. @ API

Fluid Type Sand Size 20/40 Lb. 15000

Fluid Type                      Size                      Lb.                     

Radioactive Tracer                      Carrier                      Units-MCI                     

Surfactant Type                      Gal.                      @                      /1000 Gal.

Surfactant Type                      Gal.                      @                      /1000 Gal.

Fluid Loss Type WAC-9 Gal.-Lb. 400 @ 13.8 /1000 Gal.

Sealing Agent WG-19 Gal.-Lb. 600 @ 20.1 /1000 Gal.

Sealing Agent                      Gal.-Lb.                      @                      /1000 Gal.

Sealer Type GBW-13 Gal.-Lb. 10 @ .34 /1000 Gal.

Sealer Type                      Gal.-Lb.                      @                      /1000 Gal.

Crosslinker                      Gal.-Lb.                      @                      /1000 Gal.

Stabilizer                      Gal.-Lb.                      @                      /1000 Gal.

Surfactant Type HYG-3 Gal.-Lb. 50 @ 1.7 /1000 Gal.

Surfactant Type                      Gal.-Lb.                      @                      /1000 Gal.

Bactericide                      Gal.-Lb.                      @                      /1000 Gal.

Defoamer                      Gal.-Lb.                      @                      /1000 Gal.

Flow Control                      Gal.-Lb.                      @                      /1000 Gal.

Inverter                      Gal.-Lb.                      @                      /1000 Gal.

Friction Reducer                      Gal.-Lb.                      @                      /1000 Gal.

Frappac Balls                      Qty.                      Size                      S.G.                     

Other KCL-2300 lbs.

15-N - 15 gallons

JOB DATA

CALLED OUT	ON LOCATION	JOB STARTED	JOB COMPLETED
DATE <u>8/24/84</u>	DATE <u>8/24/84</u>	DATE <u>8/24/84</u>	DATE <u>8/24/84</u>
TIME <u>0500</u>	TIME <u>0815</u>	TIME <u>0956</u>	TIME <u>1045</u>

PERSONNEL AND SERVICE UNITS

NAME	UNIT NO. & TYPE	LOCATION
L. Hall	Blender	Winfield, KS
K. Nuss	5395	" "
D. Berthot	V-12	Winfield, KS
	4665	" "
C. Capehart	Iron Trk.	Winfield, KS
	0968	
J. Loehrs	4607	Winfield, KS
	Sand Trk.	
L. Pressnall	50822	Winfield, KS
	Chem. Trk.	
R. Coffey	Field	Winfield, KS
	Supervisor	

ACID DATA

Fluid Type                      %                      Gal.-Bbl.                     

Fluid Type                      %                      Gal.-Bbl.                     

Surfactant Type                      Gal.                      @                      /1000 Gal.

Surfactant Type                      Gal.                      @                      /1000 Gal.

Sealant Type                      Gal.                      @                      /1000 Gal.

Flow Control Type                      Gal.-Lb.                      @                      /1000 Gal.

Corrosion Inhibitor                      Gal.-Lb.                      @                      /1000 Gal.

Corrosion Inhibitor                      Gal.-Lb.                      @                      /1000 Gal.

Scaling Inhibitor                      Gal.-Lb.                      @                      /1000 Gal.

Iron Sequester                      Gal.-Lb.                      @                      /1000 Gal.

Friction Reducer                      Gal.-Lb.                      @                      /1000 Gal.

PRESSURES IN PSI

Surfactant Displacement 1150

Breakdown Maximum 1200

Fracture Gradient 1100

IP 670 5 Min.                      10 Min.                      15 Min. 610

HYDRAULIC HORSEPOWER

Surfactant Available                      Used 566

AVERAGE RATE IN BPM

Surfactant Displ. 21 Overall 21

DEPARTMENT Stimulation

DESCRIPTION OF JOB Water Frac

JOB DONE THRU: TUBING  CASING  ANNULUS  TSG./ANN.

SUMMARY

Preflush: Bbl.-Gal.                      Type                     

Load & Bkdn: Bbl.-Gal.                      Pad: 5000 Bbl.-Gal.

Treatment: Bbl.-Gal. 16000 Displ: Bbl.-Gal. 9130

Gas Assist                      Tons-Scf                      @                      Scf./Bbl.

Foam Quality                      % Total Volume Foam                      Bbl.-Gal.

Total Volume: Bbl.-Gal.                      Fluid-Foam                     

REMARKS

Customer Representative

Operator Lee Hall

CUSTOMER Stelbar Oil Corp.

LEASE FBS II

WELL NO. C-1

JOB TYPE Water Frac

DATE 8-24-84



