



WESTERN TESTING CO., INC.

FORMATION TESTING

TICKET No 10363

P. O. BOX 1599 PHONE (316) 262-5861 WICHITA, KANSAS 67201

Elevation 1331 KB Formation Miss. Dof Eff. Pay Ft.

District Augusta Date 10-21-81 Customer Order No.

COMPANY NAME George R Jones

ADDRESS 125 N Market Suite 1310 Wichita, Ks. 67202

LEASE AND WELL NO Maxwell #1 COUNTY Sumner STATE Ks. Sec 19 Twp 31 Rge 1E

Mail Invoice To Same Co. Name Address No. Copies Requested 1

Mail Charts To Same Address No. Copies Requested 5

Formation Test No. 1 Interval Tested from 3632 ft. to 3660 ft. Total Depth 3660 ft.

Packer Depth 3637 ft. Size 6 3/4 in. Packer Depth - ft. Size - in.

Packer Depth 3632 ft. Size 6 3/4 in. Packer Depth - ft. Size - in.

Depth of Selective Zone Set

Top Recorder Depth (Inside) 3652 ft. Recorder Number 3354 Cap. 4200

Bottom Recorder Depth (Outside) 3655 ft. Recorder Number 5666 Cap. 3950

Below Straddle Recorder Depth - ft. Recorder Number - Cap. -

Drilling Contractor RRA #1 Drill Collar Length 398 I. D. 2 1/4 in.

Mud Type Chem Viscosity 51 Weight Pipe Length - I. D. - in.

Weight 9.2 Water Loss - cc. Drill Pipe Length 3218 I. D. 3.8 in.

Chlorides - P.P.M. Test Tool Length 23 ft. Tool Size 4 1/2 in.

Jars: Make - Serial Number - Anchor Length 28 ft. Size 4 1/2 in.

Did Well Flow? NO Reversed Out NO Surface Choke Size 3/4 in. Bottom Choke Size 5/4 in.

Main Hole Size 7 1/8 in. Tool Joint Size 4 1/2 XH in.

Blow: Weak thru out Test

Recovered 15 ft. of oil cut mud

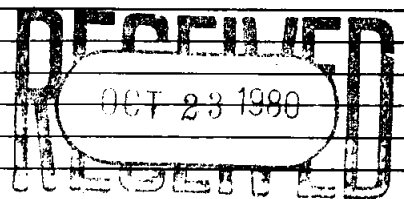
Recovered 120 ft. of muddy water 32,000 ppm

Recovered - ft. of -

Recovered - ft. of -

Recovered - ft. of -

Remarks:



Time On Location 2:30 P.M. Time Pick Up Tool 5:45 P.M. Time Off Location 2:00 A.M.

Time Set Packer(s) 8:00 P.M. Time Started Off Bottom 11:15 P.M. Maximum Temperature 113

Initial Hydrostatic Pressure (A) 1735 P.S.I.

Initial Flow Period Minutes 30 (B) 30 P.S.I. to (C) 50 P.S.I.

Initial Closed In Period Minutes 45 (D) 1445 P.S.I.

Final Flow Period Minutes 60 (E) 80 P.S.I. to (F) 110 P.S.I.

Final Closed In Period Minutes 60 (G) 1395 P.S.I.

Final Hydrostatic Pressure (H) 1715 P.S.I. Chrt. # 5666

COMPANY TERMS

Western Testing Co., Inc. shall not be liable for damages of any kind to the property or personnel of the one for whom a test is made or for any loss suffered or sustained directly or indirectly through the use of its equipment, of its statements or opinion concerning the results of any test. Tools lost or damaged in the hole shall be paid at cost by the party for whom the test is made.

All charges subject to 12% interest after 60 days from date of invoice. Any expense incurred for collection will be added to the original amount.

Test Approved By [Signature] Signature of Customer or his authorized representative

Western Representative Allen Edgington

FIELD INVOICE

Table with 2 columns: Item and Amount. Items include Open Hole Test (\$625.00), Safety Joint (\$65.00), Mileage (\$33.75), Insurance (\$50.00), and TOTAL (\$773.75).

WESTERN TESTING CO., JNC.

Pressure Data

Date: 10/21/81 Test Ticket No. 10363
 Recorder No. 5666 Capacity 2950 Location 3655 Ft.
 Clock No. --- Elevation 1331 KB Well Temperature 113 °F

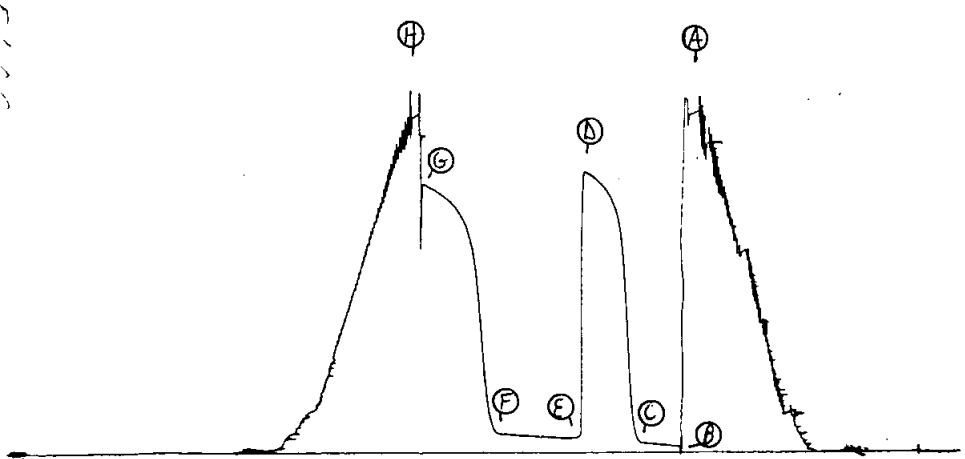
Point	Pressure		Time Given	Time Computed
A Initial Hydrostatic Mud	<u>1737</u>	P.S.I.	<u>8:00</u>	<u>M</u>
B First Initial Flow Pressure	<u>35</u>	P.S.I.	<u>30</u>	<u>25</u> Mins.
C First Final Flow Pressure	<u>53</u>	P.S.I.	<u>45</u>	<u>42</u> Mins.
D Initial Closed-in Pressure	<u>1456</u>	P.S.I.	<u>60</u>	<u>60</u> Mins.
E Second Initial Flow Pressure	<u>79</u>	P.S.I.	<u>60</u>	<u>---</u> Mins.
F Second Final Flow Pressure	<u>104</u>	P.S.I.		
G Final Closed-in Pressure	<u>1394</u>	P.S.I.		
H Final Hydrostatic Mud	<u>1727</u>	P.S.I.		

PRESSURE BREAKDOWN

First Flow Pressure		Initial Shut-In		Second Flow Pressure		Final Shut-In	
Breakdown: <u>5</u> Inc.		Breakdown: <u>14</u> Inc.		Breakdown: <u>12</u> Inc.		Breakdown: <u>18</u> Inc.	
of <u>5</u> mins. and a		of <u>3</u> mins. and a		of <u>5</u> mins. and a		of <u>3</u> mins. and a	
final inc. of <u>0</u> Min.		final inc. of <u>0</u> Min.		final inc. of <u>0</u> Min.		final inc. of <u>0</u> Min.	
Point Mins.	Press.	Point Minutes	Press.	Point Minutes	Press.	Point Minutes	Press.
P 1 0	<u>35</u>	0	<u>53</u>	0	<u>79</u>	0	<u>104</u>
P 2 5	<u>43</u>	3	<u>92</u>	5	<u>---</u>	3	<u>147</u>
P 3 10	<u>45</u>	6	<u>225</u>	10	<u>---</u>	6	<u>251</u>
P 4 15	<u>49</u>	9	<u>574</u>	15	<u>79</u>	9	<u>467</u>
P 5 20	<u>52</u>	12	<u>966</u>	20	<u>82</u>	12	<u>757</u>
P 6 25	<u>53</u>	15	<u>1165</u>	25	<u>86</u>	15	<u>982</u>
P 7 30		18	<u>1259</u>	30	<u>88</u>	18	<u>1086</u>
P 8 35		21	<u>1314</u>	35	<u>90</u>	21	<u>1157</u>
P 9 40		24	<u>1353</u>	40	<u>92</u>	24	<u>1207</u>
P10 45		27	<u>1382</u>	45	<u>94</u>	27	<u>1243</u>
P11 50		30	<u>1402</u>	50	<u>97</u>	30	<u>1273</u>
P12 55		33	<u>1424</u>	55	<u>100</u>	33	<u>1299</u>
P13 60		36	<u>1438</u>	60	<u>104</u>	36	<u>1319</u>
P14		39	<u>1450</u>	65		39	<u>1335</u>
P15		42	<u>1456</u>	70		42	<u>1349</u>
P16		45		75		45	<u>1365</u>
P17		48		80		48	<u>1375</u>
P18		51		85		51	<u>1384</u>
P19		54		90		54	<u>1394</u>
P20		57				57	
		60				60	

TKT # 10363

0



Company George R. Jones Lease & Well No. Maxwell #1
 Elevation 1331 Kelly Bushing Formation Mississippi Dolomite Effective Pay - Ft. Ticket No. 10363
 Date 10/21/81 Sec. 19 Twp. 31S Range 1E County Sumner State Kansas
 Test Approved by Bob Hammond Western Representative Allen Edgington

Formation Test No. 1 Interval Tested from 3632 ft. to 3660 ft. Total Depth 3660 ft.
 Packer Depth 3627 ft. Size 6 3/4 in. Packer Depth - ft. Size - in.
 Packer Depth 3632 ft. Size 6 3/4 in. Packer Depth - ft. Size - in.
 Depth of Selective Zone Set -

Top Recorder Depth (Inside) 3652 ft. Recorder Number 3354 Cap. 4200
 Bottom Recorder Depth (Outside) 3655 ft. Recorder Number 5666 Cap. 3950
 Below Straddle Recorder Depth - ft. Recorder Number - Cap. -
 Drilling Contractor R. R. A. Drlg. Rig #1 Drill Collar Length 398 I. D. 2 1/4 in.
 Mud Type chemical Viscosity 51 Weight Pipe Length - I. D. - in.
 Weight 9.2 Water Loss - cc. Drill Pipe Length 3218 I. D. 3.8 in.
 Chlorides - P.P.M. Test Tool Length 23 ft. Tool Size 4 1/2 in.
 Jars: Make - Serial Number - Anchor Length 28 ft. Size 4 1/2 in.
 Did Well Flow? No Reversed Out No Surface Choke Size 3/4 in. Bottom Choke Size 3/4 in.
 Main Hole Size 7 7/8 in. Tool Joint Size 4 1/2 XH in.

Blow: Weak throughout test.

Recovered 15 ft. of oil cut mud
 Recovered 120 ft. of muddy water Chlorides 32,000 ppm
 Recovered - ft. of -
 Recovered - ft. of -
 Recovered - ft. of -
 Remarks: -

READ OUTSIDE CHART

Time Set	Packer(s)	AM P.M.	Time Started Off Bottom	AM P.M.	Maximum Temperature
			<u>11:15</u>		<u>113°</u>
Initial Hydrostatic Pressure			(A) <u>1737</u>	P.S.I.	
Initial Flow Period		Minutes	<u>25</u>	(B) <u>35</u>	P.S.I. to (C) <u>53</u> P.S.I.
Initial Closed In Period		Minutes	<u>42</u>	(D) <u>1456</u>	P.S.I.
Final Flow Period		Minutes	<u>60</u>	(E) <u>79</u>	P.S.I. to (F) <u>104</u> P.S.I.
Final Closed In Period		Minutes	<u>54</u>	(G) <u>1394</u>	P.S.I.
Final Hydrostatic Pressure			(H) <u>1727</u>	P.S.I.	

WESTERN TESTING CO., INC.

Pressure Data

Date 10/21/81 Test Ticket No. 10363
 Recorder No. 5666 Capacity 3950 Location 3655 Ft.
 Clock No. - Elevation 1331 Kelly Bushing Well Temperature 113 °F

Point	Pressure		Time Given	Time Computed
A Initial Hydrostatic Mud	<u>1737</u> P.S.I.	Open Tool	<u>8:00P</u>	<u>M</u>
B First Initial Flow Pressure	<u>35</u> P.S.I.	First Flow Pressure	<u>30</u> Mins.	<u>25</u> Mins.
C First Final Flow Pressure	<u>53</u> P.S.I.	Initial Closed-in Pressure	<u>45</u> Mins.	<u>42</u> Mins.
D Initial Closed-in Pressure	<u>1456</u> P.S.I.	Second Flow Pressure	<u>60</u> Mins.	<u>60</u> Mins.
E Second Initial Flow Pressure	<u>79</u> P.S.I.	Final Closed-in Pressure	<u>60</u> Mins.	<u>54</u> Mins.
F Second Final Flow Pressure	<u>104</u> P.S.I.			
G Final Closed-in Pressure	<u>1394</u> P.S.I.			
H Final Hydrostatic Mud	<u>1727</u> P.S.I.			

PRESSURE BREAKDOWN

First Flow Pressure		Initial Shut-In		Second Flow Pressure		Final Shut-In	
Breakdown: <u>5</u> Inc.		Breakdown: <u>14</u> Inc.		Breakdown: <u>12</u> Inc.		Breakdown: <u>18</u> Inc.	
of <u>5</u> mins. and a		of <u>3</u> mins. and a		of <u>5</u> mins. and a		of <u>3</u> mins. and a	
final inc. of <u>0</u> Min.		final inc. of <u>0</u> Min.		final inc. of <u>0</u> Min.		final inc. of <u>0</u> Min.	
Point Mins.	Press.	Point Minutes	Press.	Point Minutes	Press.	Point Minutes	Press.
P 1 <u>0</u>	<u>35</u>	<u>0</u>	<u>53</u>	<u>0</u>	<u>79</u>	<u>0</u>	<u>104</u>
P 2 <u>5</u>	<u>43</u>	<u>3</u>	<u>92</u>	<u>5</u>	<u>79</u>	<u>3</u>	<u>147</u>
P 3 <u>10</u>	<u>45</u>	<u>6</u>	<u>225</u>	<u>10</u>	<u>79</u>	<u>6</u>	<u>251</u>
P 4 <u>15</u>	<u>49</u>	<u>9</u>	<u>574</u>	<u>15</u>	<u>79</u>	<u>9</u>	<u>467</u>
P 5 <u>20</u>	<u>52</u>	<u>12</u>	<u>966</u>	<u>20</u>	<u>82</u>	<u>12</u>	<u>757</u>
P 6 <u>25</u>	<u>53</u>	<u>15</u>	<u>1165</u>	<u>25</u>	<u>86</u>	<u>15</u>	<u>982</u>
P 7		<u>18</u>	<u>1259</u>	<u>30</u>	<u>88</u>	<u>18</u>	<u>1086</u>
P 8		<u>21</u>	<u>1314</u>	<u>35</u>	<u>90</u>	<u>21</u>	<u>1157</u>
P 9		<u>24</u>	<u>1353</u>	<u>40</u>	<u>92</u>	<u>24</u>	<u>1207</u>
P10		<u>27</u>	<u>1382</u>	<u>45</u>	<u>94</u>	<u>27</u>	<u>1243</u>
P11		<u>30</u>	<u>1402</u>	<u>50</u>	<u>97</u>	<u>30</u>	<u>1273</u>
P12		<u>33</u>	<u>1424</u>	<u>55</u>	<u>100</u>	<u>33</u>	<u>1299</u>
P13		<u>36</u>	<u>1438</u>	<u>60</u>	<u>104</u>	<u>36</u>	<u>1319</u>
P14		<u>39</u>	<u>1450</u>			<u>39</u>	<u>1335</u>
P15		<u>42</u>	<u>1456</u>			<u>42</u>	<u>1349</u>
P16						<u>45</u>	<u>1365</u>
P17						<u>48</u>	<u>1375</u>
P18						<u>51</u>	<u>1384</u>
P19						<u>54</u>	<u>1394</u>
P20							