



**WESTERN TESTING CO., INC.**  
 P.O. BOX 1599 — WICHITA, KANSAS 67201

WELL REPORT NO. 5556  
 UNIT NO.  
 DISTRICT 13

DATE 07/05/84

CAMIO OIL COMPANY  
 16046 EAST HARRY  
 WICHITA, KANSAS 67230

FOR CUSTOMER'S USE ONLY	
REGISTER NO.	VOUCHER NO.
TERMS APPROVED	PRICE APPROVED
CALCULATIONS CHECKED	
ADJUSTMENTS	
ACCOUNTING DISTRIBUTION	
AUDITED	FINAL APPROVAL

YOUR ORDER NO.	OWNER	CONTRACTOR
----------------	-------	------------

WELL NO.	FARM	SECTION	TWP.	RANGE
NEISES	SUMNER	KS	17	31S 2E

DRILL STEM TEST FROM 3624' TO 3689' TOTAL DEPTH 3689' (TEST 1) \$ 550.00  
 TOTAL \$ 550.00

DISCOUNT	1% DISCOUNT ALLOWED ON THIS INVOICE IF PAID BY THE 20TH OF THE FOLLOWING MONTH.	PLEASE INCLUDE OUR INVOICE NUMBER WITH YOUR REMITTANCE	INVOICE NUMBER 5556
----------	---	--	---------------------

SEND ALL REMITTANCES TO POST OFFICE BOX 1599, WICHITA, KANSAS 67201



WESTERN TESTING CO., INC.
FORMATION TESTING

TICKET

No

5556

P. O. BOX 1599 PHONE (316) 262-5861
WICHITA, KANSAS 67201

Elevation 1190 KB

Formation Simp.

Eff. Pay - Ft.

District 13 Augusta Date 7-5-84 Customer Order No. -
COMPANY NAME Camio Oil Company

ADDRESS 16046 E. Harry St Wichita, Ks 67230

LEASE AND WELL NO. Neises #10 COUNTY Sumner STATE Ks Sec. 17 Twp. 31 Rge. 2E

Mail Invoice To Same #1 NEISES No. Copies Requested

Mail Charts To Same Address No. Copies Requested

Formation Test No. 1 Interval Tested From 3624 ft. to 3689 ft. Total Depth 3689 ft.

Packer Depth 3624 ft. Size 6 3/4 in. Packer Depth - ft. Size - in.

Packer Depth 3619 ft. Size 6 3/4 in. Packer Depth - ft. Size - in.

Depth of Selective Zone Set

Top Recorder Depth (Inside) 3646 ft. Recorder Number 13266 Cap. 4200

Bottom Recorder Depth (Outside) 3649 ft. Recorder Number 13268 Cap. 4225

Below Saddle Recorder Depth - ft. Recorder Number - Cap. -

Drilling Contractor McAllister Drilling Co 10 Drill Collar Length 277 I. D. 2 1/4 in.

Mud Type Chem Viscosity 43 Weight Pipe Length - I. D. - in.

Weight 9.3 Water Loss 12.8 cc. Drill Pipe Length 3327 I. D. 3.8 in.

Chlorides 6.000 P.P.M. Test Tool Length 20 ft. Tool Size 5 1/2 in.

Jars: Make - Serial Number - Anchor Length 65 ft. Size 5 1/2 in.

Did Well Flow? No Reversed Out No. Surface Choke Size 3/4 in. Bottom Choke Size 3/4 in.

Main Hole Size 7 1/8 in. Tool Joint Size 4 1/2 in.

Blow: 2 1/2 to very weak 15 minutes

Recovered 10 ft. of Drilling mud w/ slight show of oil

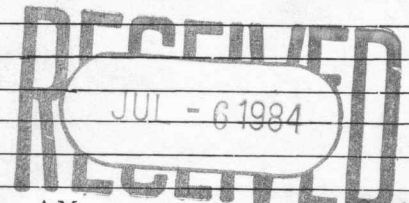
Recovered - ft. of

Recovered - ft. of

Recovered - ft. of

Recovered - ft. of

Chlorides - P.P.M. Sample Jars used 1 Remarks:



Time On Location 2:00 7:55 A.M. Time Pick Up Tool 3:50 A.M. Time Off Location Kelly A.M.

Time Set Packer(s) 5:30 A.M. Time Started Off Bottom 8:00 P.M. Maximum Temperature 113

Initial Hydrostatic Pressure (A) 1800 P.S.I.

Initial Flow Period Minutes 30 (B) 50 P.S.I. to (C) 50 P.S.I.

Initial Closed In Period Minutes 30 (D) 670 P.S.I.

Final Flow Period Minutes 30 (E) 70 P.S.I. to (F) 60 P.S.I.

Final Closed In Period Minutes 60 (G) 995 P.S.I.

Final Hydrostatic Pressure (H) 1800 P.S.I.

COMPANY TERMS

Western Testing Co., Inc. shall not be liable for damages of any kind to the property or personnel of the one for whom a test is made or for any loss suffered or sustained directly or indirectly through the use of its equipment, of its statements or opinion concerning the results of any test. Tools lost or damaged in the hole shall be paid at cost by the party for whom the test is made.

All charges subject to 12% interest after 60 days from date of invoice. Any expense incurred for collection will be added to the original amount.

Test Approved By Signature of Customer or his authorized representative

Western Representative Norman Allen

FIELD INVOICE

Table with 2 columns: Item Name and Price. Items include Open Hole Test, Misrun, Straddle Test, Jars, Selective Zone, Safety Joint, Standby, Evaluation, Extra Packer, Circ. Sub., Mileage, Fluid Sampler, Extra Charts, Insurance, Telecopier, and TOTAL.

WESTERN TESTING CO., INC.

Pressure Data

Date 7-5-84

Test Ticket No. 5556

Recorder No. 13266 Capacity \_\_\_\_\_ Location \_\_\_\_\_ Ft.

Clock No. \_\_\_\_\_ Elevation \_\_\_\_\_ Well Temperature \_\_\_\_\_ °F

Point	Pressure		Time Given	Time Computed
A Initial Hydrostatic Mud	<u>1800</u>	P.S.I.	Open Tool	M
B First Initial Flow Pressure	<u>36</u>	P.S.I.	First Flow Pressure	Mins. _____ Mins.
C First Final Flow Pressure	<u>36</u>	P.S.I.	Initial Closed-in Pressure	Mins. _____ Mins.
D Initial Closed-in Pressure	<u>658</u>	P.S.I.	Second Flow Pressure	Mins. _____ Mins.
E Second Initial Flow Pressure	<u>39</u>	P.S.I.	Final Closed-in Pressure	Mins. _____ Mins.
F Second Final Flow Pressure	<u>39</u>	P.S.I.		
G Final Closed-in Pressure	<u>989</u>	P.S.I.		
H Final Hydrostatic Mud	<u>1800</u>	P.S.I.		

PRESSURE BREAKDOWN

First Flow Pressure  
Breakdown: 7 Inc.  
of 5 mins. and a  
final inc. of 0 Min.

Initial Shut-In  
Breakdown: 11 Inc.  
of 3 mins. and a  
final inc. of 0 Min.

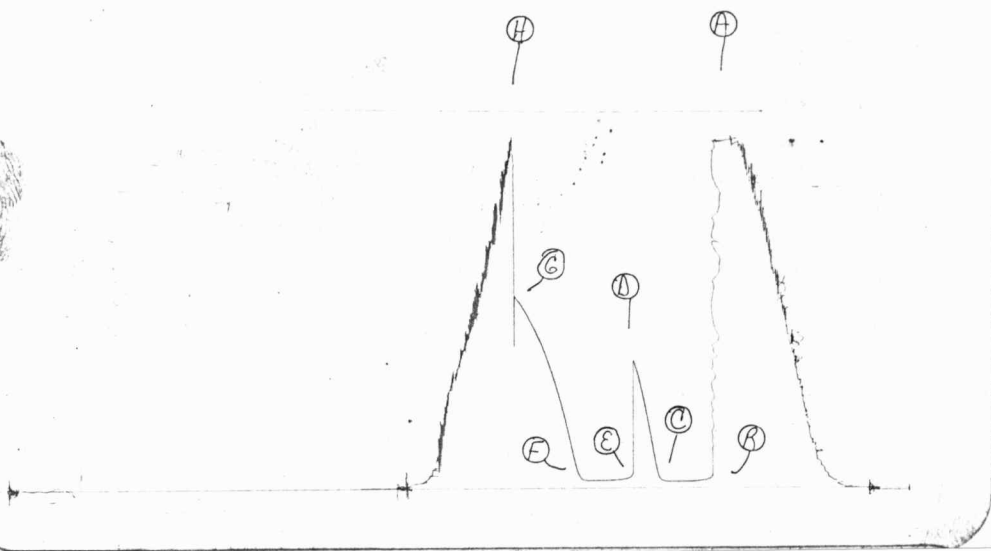
Second Flow Pressure  
Breakdown: 7 Inc.  
of 5 mins. and a  
final inc. of 0 Min.

Final Shut-In  
Breakdown: 20 Inc.  
of 3 mins. and a  
final inc. of 0 Min.

Point Mins.	Press.	Point Minutes	Press.	Point Minutes	Press.	Point Minutes	Press.
P 1 0	<u>36</u>	0	<u>36</u>	0	<u>39</u>	0	<u>39</u>
P 2 5		3	<u>36</u>	5		3	<u>39</u>
P 3 10		6	<u>36</u>	10		6	<u>41</u>
P 4 15		9	<u>44</u>	15		9	<u>60</u>
P 5 20		12	<u>90</u>	20		12	<u>118</u>
P 6 25		15	<u>193</u>	25		15	<u>203</u>
P 7 30	<u>36</u>	18	<u>308</u>	30	<u>39</u>	18	<u>289</u>
P 8 35		21	<u>413</u>	35		21	<u>370</u>
P 9 40		24 <u>544</u>	<del>504</del>	40		24	<u>446</u>
P 10 45		27 <u>616</u>	<del>544</del>	45		27	<u>516</u>
P 11 50		30	<u>658</u>	50		30	<u>573</u>
P 12 55		38		55		33	<u>640</u>
P 13 60		36		60		36	<u>694</u>
P 14		39		65		39	<u>745</u>
P 15		42		70		42	<u>789</u>
P 16		45		75		45	<u>832</u>
P 17		48		80		48	<u>872</u>
P 18		51		85		51	<u>911</u>
P 19		54		90		54	<u>948</u>
P 20		57				57	<u>989</u>
		60				<u>60</u>	

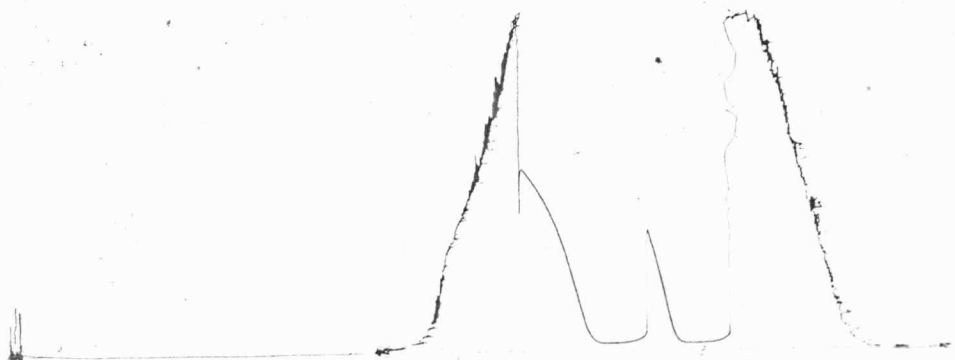
TK7 # 5556

I



TKT # 5556

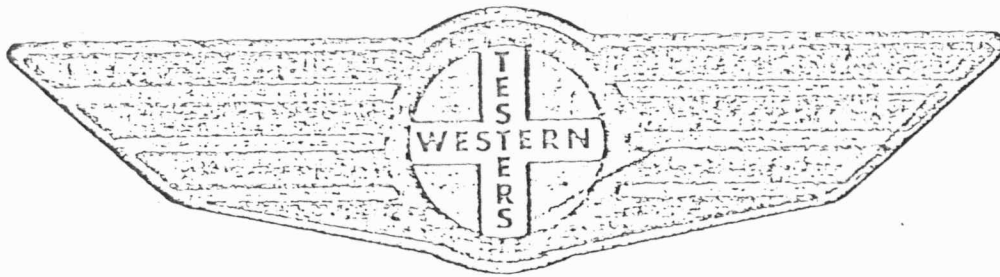
0



FORMATION

TEST

REPORT



Home Office:

Wichita, Kansas 67201

P.O. Box 1599

Phone (316) 262-5861

WESTERN TESTING CO. INC.  
SUBSURFACE PRESSURE SURVEY

DATE: 7/5/84 TICKET #5556  
CUSTOMER: CAMIO OIL COMPANY LEASE: NEISES  
WELL: 1 TEST: 1 GEOLOGIST: BAKER  
ELEVATION (KB): 1190 FORMATION: SIMPSON  
SECTION: 17 TOWNSHIP: 31S  
RANGE: 2E COUNTY: SUMNER STATE: KANSAS  
GAUGE SN #13266 RANGE: 4200 CLOCK: 12

INTERVAL TEST FROM: 3624 FT TO: 3689 FT TOTAL DEPTH: 3689 FT  
DEPTH OF SELECTIVE ZONE: FT  
PACKER DEPTH: 3624 FT SIZE: 6 3/4 IN PAKER DEPTH: 3619 FT SIZE: 6 3/4 IN  
PACKER DEPTH: FT SIZE: IN PAKER DEPTH: FT SIZE: IN

DRILLING CONTRACTOR: MCALLISTER DREG  
MUD TYPE: CHEMICAL VISCOSITY: 43  
WEIGHT: 9.3 WATER LOSS (CC): 12.8  
CHLORIDES (P.P.M.): 6000  
JARS - MAKE: SERIAL NUMBER:  
DID WELL FLOW? NO REVERSED OUT? NO  
DRILL COLLAR LENGTH: 277 FT I.D.: 2.25 IN  
WEIGHT PIPE LENGTH: FT I.D.: IN  
DRILL PIPE LENGTH: 3327 FT I.D.: 3.8 IN  
TEST TOOL LENGTH: 20 FT TOOL SIZE: 5 1/2 OD IN  
ANCHOR LENGTH: 65 FT SIZE: 5 1/2 OD IN  
SURFACE CHOKE SIZE: 3/4 IN BOTTOM CHOKE SIZE: 3/4 IN  
MAIN HOLE SIZE: 7 7/8 IN TOOL JOINT SIZE: 4 1/2 XH IN

BLOW: WEAK BLOW TO VERY WEAK BLOW IN 15 MINUTES.

RECOVERED: 10 FT OF: DRILLING MUD WITH SLIGHT SHOW OF OIL.  
RECOVERED: FT OF:  
RECOVERED: FT OF:  
RECOVERED: FT OF:  
RECOVERED: FT OF:  
RECOVERED: FT OF:  
RECOVERED: FT OF:  
RECOVERED: FT OF:  
RECOVERED: FT OF:

REMARKS:

TIME SET PACKER(S): 5:30 AM TIME STARTED OFF BOTTOM: 8:00 AM  
WELL TEMPERATURE: 113 °F  
INITIAL HYDROSTATIC PRESSURE: (A) 1800 PSI  
INITIAL FLOW PERIOD MIN: 30 (B) 36 PSI TO (C) 36 PSI  
INITIAL CLOSED IN PERIOD MIN: 30 (D) 658 PSI  
FINAL FLOW PERIOD MIN: 30 (E) 39 PSI TO (F) 39 PSI  
FINAL CLOSED IN PERIOD MIN: 57 (G) 989 PSI  
FINAL HYDROSTATIC PRESSURE (H) 1800 PSI

