

36-31-20EPI

KANSAS

**WELL COMPLETION REPORT AND  
DRILLER'S LOG**

API No. 15 — 099 — 21,443  
County Number

S. 36 T. 31S R. 20 E

Loc. NW, NE, NE  
County Labette

Operator  
Hickory Creek Oil Company

Address  
P.O. Box 379, Parsons, Kansas

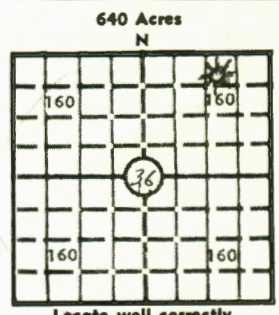
Well No. 1 Lease Name Cares

Footage Location  
500 feet from (N) line 1155 feet from (E) line

Principal Contractor K & J Drillings Geologist

Spud Date 3-02-81 Date Completed 3-04-81 Total Depth 601' P.B.T.D.

Directional Deviation Oil and/or Gas Purchaser



Elev.: Gr. +877  
DF KB

**CASING RECORD**

Report of all strings set — surface, intermediate, production, etc.

Purpose of string	Size hole drilled	Size casing set (in O.D.)	Weight lbs/ft.	Setting depth	Type cement	Sacks	Type and percent additives
Surface		7 "		43'	Portland	6	12# CaCl <sub>2</sub>
Production		4½ "		594'	Portland	60	

**LINER RECORD**

**PERFORATION RECORD**

Top, ft.	Bottom, ft.	Sacks cement	Shots per ft.	Size & type	Depth interval
			2		567.5' to 572'
			2		573 to 579'

**ACID, FRACTURE, SHOT, CEMENT SQUEEZE RECORD**

Amount and kind of material used	Depth interval treated
300 gal. 15% HCl	567.5-572'
<p>OCT 17 1984</p> <p>State Geological Survey WICHITA BRANCH</p>	

RECEIVED  
STATE CORPORATION COMMISSION

**INITIAL PRODUCTION**

OCT 16 1984

Date of first production Producing method (flowing, pumping, gas lift, etc.) CONSERVATION DIVISION  
Wichita, Kansas

RATE OF PRODUCTION PER 24 HOURS	Oil bbls.	Gas MCF	Water bbls.	Gas-oil ratio	CFPB

Disposition of gas (vented, used on lease or sold) Shut-in Producing interval(s) Mississippi

INSTRUCTIONS: As provided in KCC Rule 82-2-125, within 90 days after completion of a well, one completed copy of this Drillers Log shall be transmitted to the State Geological Survey of Kansas, 4150 Monroe Street, Wichita, Kansas 67209. Copies of this form are available from the Conservation Division, State Corporation Commission, 245 No. Water, Wichita, Kansas 67202. Phone AC 316-522-2206. If confidential custody is desired, please note Rule 82-2-125. Drillers Logs will be on open file in the Oil and Gas Division, State Geological Survey of Kansas, Lawrence, Kansas 66044.

Operator		DESIGNATE TYPE OF COMP.: OIL, GAS, DRY HOLE, SWDW, ETC.:
Well No. 1	Lease Name Cares	Gas
S 36 T 31 R 20 E		

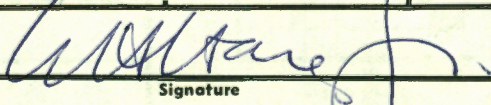
**WELL LOG**

Show all important zones of porosity and contents thereof; cored intervals, and all drill-stem tests, including depth interval tested, cushion used, time tool open, flowing and shut-in pressures, and recoveries.

SHOW GEOLOGICAL MARKERS, LOGS RUN, OR OTHER DESCRIPTIVE INFORMATION.

FORMATION DESCRIPTION, CONTENTS, ETC.	TOP	BOTTOM	NAME	DEPTH
Top Soil		1		
Gray Clay	1	8		
Yellow Clay	8	11		
Sandstone	11	15		
Gray Shale	15	60		
Lime	60	80		
Blk. Shale	80	85		
Lime	85	100		
Blk. Shale	100	104		
Sandstone	104	105		
Lt. Gray Sandy Shale	105	107		
Sandstone	107	115		
Silt Stone	115	120		
Gray Shale	120	123		
Sandstone	123	126		
Silty Gray Shale	126	175		
Gray Shale	175	193		
Dk. Shale	193	198		
Gray Shale	198	213		
Lime	213	214		
Dk. Shale	214	223		
Gray Shale	223	235		
Sandstone	235	260		
Sandstone & Shale	260	285		
Sandy Gray Shale	285	292		
Sandstone	292	303		
Gray Shale	303	329		
Sandstone	329	339		
Sandstone & Shale	339	373		
Gray Shale	373	390		
Sandstone	390	404		
Gray Shale	404	475		
Dk. Gray Shale	475	530		
Lt. Gray Shale	530	535		
Gray Shale	535	550		
Lt. Gray Shale	550	560		
Streak of Coal	560	560		
Lt. Gray Shale	560	563		
Dk. Gray Shale	563	573		
Mississippi Chat	573	601		
Bottom of hole		601		

USE ADDITIONAL SHEETS, IF NECESSARY, TO COMPLETE WELL RECORD.

Date Received	 Signature
	General Manager, INCO Energy, Inc Title
	10/12/84 Date

479245

30 31-306