

State Geological Survey

**IMPORTANT**  
Kans. Geo. Survey request samples on this well.

15-035-22163  
**11-31-5E** P2

WICHITA BRANCH  
**KANSAS DRILLERS LOG**

S. 11 T. 31 R. 5 <sup>E</sup><sub>W</sub>  
Loc. C SW NE  
County Cowley

API No. 15 — 035 — 22,163  
County Number

Operator  
Energy Exploration, Inc.

Address  
606 One Twenty Bldg. Wichita, Kansas 67202

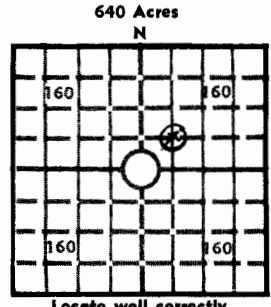
Well No. #1 Lease Name Salem-Lewis

Footage Location  
660 feet from (S) line 660 feet from (W) line

Principal Contractor White & Ellis Drilling Geologist Phil Knighton

Spud Date February 14, 1979 Total Depth 3030' P.B.T.D.

Date Completed February 20, 1979 Oil Purchaser



Locate well correctly  
Elev.: Gr. 1308  
DF 1311 KB 1313

**CASING RECORD**

Report of all strings set — surface, intermediate, production, etc.

Purpose of string	Size hole drilled	Size casing set (in O.D.)	Weight lbs/ft.	Setting depth	Type cement	Sacks	Type and percent additives
to protect water supply	11-3/8"	8-5/8"	24	205'	Common	150	
Production	8-5/8"	4-1/2"	9.5	3030'			
Production		2-3/8"	4.6	2517'			

**LINER RECORD**

**PERFORATION RECORD**

Top, ft.	Bottom, ft.	Sacks cement	Shots per ft.	Size & type	Depth interval
			2	3/4" Jet	2520-28

Size	Setting depth	Packer set at
2-3/8"	2495	

**ACID, FRACTURE, SHOT, CEMENT SQUEEZE RECORD**

Amount and kind of material used	Depth interval treated
250 gal. of 15% MCA, 7000# sand, 400 BW	2520-28
Squeeze, 100 sx. Common cement	2500-2575

**INITIAL PRODUCTION**

Date of first production <u>15 September 1979</u>	Producing method (flowing, pumping, gas lift, etc.) <u>Pumping</u>
RATE OF PRODUCTION PER 24 HOURS	Oil Gas Water Gas-oil ratio
	bbls. <u>116</u> MCF bbls. <u>CFPB</u>
Disposition of gas (vented, used on lease or sold) <u>Sold</u>	Producing interval(s) <u>2520-28</u>

INSTRUCTIONS: As provided in KCC Rule 82-2-125, within 90 days after completion of a well, one completed copy of this Drillers Log shall be transmitted to the State Geological Survey of Kansas, 4150 Monroe Street, Wichita, Kansas 67209. Copies of this form are available from the Conservation Division, State Corporation Commission, 3830 So. Meridian (P.O. Box 17027), Wichita, Kansas 66217. Phone AC 316-522-2206. If confidential custody is desired, please note Rule 82-2-125. Drillers Logs will be on open file in the Oil and Gas Division, State Geological Survey of Kansas, Lawrence, Kansas 66044.

Operator ENERGY EXPLORATION, INC. DESIGNATE TYPE OF COMP.: OIL, GAS, DRY HOLE, SWDW, ETC.:

Well No. #1 Lease Name Salem-Lewis GAS


S 11 T 31 R 5 E W Cowley County

**WELL LOG**  
 Show all important zones of porosity and contents thereof; cored intervals, and all drill-stem tests, including depth interval tested, cushion used, time tool open, flowing and shut-in pressures, and recoveries. SHOW GEOLOGICAL MARKERS, LOGS RUN, OR OTHER DESCRIPTIVE INFORMATION.

FORMATION DESCRIPTION, CONTENTS, ETC.	TOP	BOTTOM	NAME	DEPTH
Stalnaker	-576			1889
Kansas City	-950			2263
Base/Kansas City	-1178			2491
Cleveland Sand	-1203			2518
Fort Scott	-1269			2582
Oswego	-1332			2645
Cherokee	-1403			2716
Mississippi Chert	-1648			2961
Mississippi Limestone	-1659			2969

USE ADDITIONAL SHEETS, IF NECESSARY, TO COMPLETE WELL RECORD.

Date Received \_\_\_\_\_

  
 Signature  
 Secretary, Land Division  
 Title  
 19 Sept. 1979  
 Date

11-31-28

OPERATOR: Energy Exploration, Inc. 120 S. Market; Suite 606; Wichita, Ks. 67202

CONTRACTOR: White & Ellis Drilling, Inc., Box 448, El Dorado, Kansas 67042

Lease Name <sup>SALEM</sup> -Lewis Well No. 1

Sec. 11 T. 31 R. ~~SW~~ E Spot C SW NE

County Cowley State Kansas Elevation

Casing Record:

Surface: 8 5/8 @ 204' with 150 Sxs.

Production: @ with Sxs.

Type Well: oil Total Depth 3050' KB

Drilling Commenced: 2/14/79 - Drilling Completed 2/20/79

Formation	From	To	Tops
Cellar	0	5	Kansas City - 2262
Lime, Shale Sks.	5	290	Mississippi - 2961
Shale, Lime Sks.	290	810	
Shale, Lime	810	1820	
Shale, Sand	1820	1940	
Lime, Shale	1940	2060	
Shale	2060	2262	
Lime	2262	2435	
Lime, Shale, Sand	2435	2635	
Lime	2635	2720	
Shale	2720	2961	
Lime	2961	3050	

I hereby certify the foregoing statements are true and correct to the best of my knowledge and belief.

WHITE & ELLIS DRILLING, INC.

*Ernest Sifford*  
Ernest Sifford, Secretary/Treas.

STATE OF KANSAS  
COUNTY OF BUTLER, S.S

Subscribed and sworn to before me, a Notary Public, this 23rd day of February, 1979.



*L.B. Auer*  
L.B. Auer, Notary Public

COMPLETION RECORD

Liner Record: Size \_\_\_\_\_ From \_\_\_\_\_ To \_\_\_\_\_

Cementing Record: \_\_\_\_\_ Sacks \_\_\_\_\_

Perforating Record: