

Company Range Oil Company, Inc. Lease & Well No. Atkinson #2
 Elevation 1307 Kelly Bushing Formation Bartleville Effective Pay - Ft. Ticket No. 8125
 Date 5/19/81 Sec. 24 Twp. 32S Range 5E County Cowley State Kansas
 Test Approved by Joe M Baker Western Representative Kenny Kirkendall

Formation Test No. 1 Interval Tested from 2995 ft. to 3004 ft. Total Depth 3004 ft.
 Packer Depth 2995 ft. Size 6 3/4 in. Packer Depth - ft. Size - in.
 Packer Depth 2990 ft. Size 6 3/4 in. Packer Depth - ft. Size - in.
 Depth of Selective Zone Set -

Top Recorder Depth (Inside) 2999 ft. Recorder Number 2605 Cap. 4150
 Bottom Recorder Depth (Outside) 3003 ft. Recorder Number 10266 Cap. 4650
 Below Straddle Recorder Depth - ft. Recorder Number - Cap. -
 Drilling Contractor Range Oil Company Rig #3 Drill Collar Length 60 I. D. - in.
 Mud Type Chemical Viscosity 38 Weight Pipe Length - I. D. - in.
 Weight 9.5 Water Loss 12.8 cc. Drill Pipe Length 2917 I. D. - in.
 Chlorides 1200 P.P.M. Test Tool Length 18 ft. Tool Size 5 1/2 in.
 Jars: Make No Serial Number - Anchor Length 9 ft. Size 5 1/2 in.
 Did Well Flow? No Reversed Out - Surface Choke Size 3/4 in. Bottom Choke Size 3/4 in.
 Main Hole Size 7 7/8 in. Tool Joint Size 4 1/2 XH in.

Blow: Very weak died in 15 minutes.

Recovered 15 ft. of mud with oil spots on top of tool.

Recovered ft. of

Recovered ft. of

Recovered ft. of

Recovered ft. of

Remarks:

Time Set	<u>10:05</u>	<u>A.M.</u>	Time Started Off Bottom	<u>12:05</u>	<u>A.M.</u>	Maximum Temperature	<u>111</u>
		<u>P.M.</u>			<u>P.M.</u>		
Initial Hydrostatic Pressure			(A)	<u>1431</u>	P.S.I.		
Initial Flow Period	Minutes	<u>30</u>	(B)	<u>40</u>	P.S.I. to (C)	<u>25</u>	P.S.I.
Initial Closed In Period	Minutes	<u>30</u>	(D)	<u>481</u>	P.S.I.		
Final Flow Period	Minutes	<u>35</u>	(E)	<u>80</u>	P.S.I. to (F)	<u>32</u>	P.S.I.
Final Closed In Period	Minutes	<u>30</u>	(G)	<u>451</u>	P.S.I.		
Final Hydrostatic Pressure			(H)	<u>1394</u>	P.S.I.		

WESTERN TESTING CO., INC.
Pressure Data

Date 5/19/81

Recorder No. 2605

Capacity 4150

Test Ticket No. 8125

Location 2999 Ft.

Clock No. - Elevation 1307 Kelly Bushing

Well Temperature 111 °F

Point	Pressure	Time Given	Time Computed
A Initial Hydrostatic Mud	<u>1431</u> P.S.I.	<u>10:05P</u> M	
B First Initial Flow Pressure	<u>40</u> P.S.I.	<u>30</u> Mins.	<u>30</u> Mins.
C First Final Flow Pressure	<u>25</u> P.S.I.	<u>30</u> Mins.	<u>30</u> Mins.
D Initial Closed-in Pressure	<u>481</u> P.S.I.	<u>30</u> Mins.	<u>35</u> Mins.
E Second Initial Flow Pressure	<u>80</u> P.S.I.	<u>30</u> Mins.	<u>30</u> Mins.
F Second Final Flow Pressure	<u>32</u> P.S.I.		
G Final Closed-in Pressure	<u>451</u> P.S.I.		
H Final Hydrostatic Mud	<u>1394</u> P.S.I.		

PRESSURE BREAKDOWN

First Flow Pressure
Breakdown: 6 Inc.
of 5 mins. and a
final inc. of 0 Min.

Initial Shut-In
Breakdown: 10 Inc.
of 3 mins. and a
final inc. of 0 Min.

Second Flow Pressure
Breakdown: 7 Inc.
of 5 mins. and a
final inc. of 0 Min.

Final Shut-In
Breakdown: 10 Inc.
of 3 mins. and a
final inc. of 0 Min.

Point Mins.	Press.	Point Minutes	Press.	Point Minutes	Press.	Point Minutes	Press.
P 1 <u>0</u>	<u>40</u>	<u>0</u>	<u>25</u>	<u>0</u>	<u>80</u>	<u>0</u>	<u>32</u>
P 2 <u>5</u>	<u>34</u>	<u>3</u>	<u>57</u>	<u>5</u>	<u>55</u>	<u>3</u>	<u>78</u>
P 3 <u>10</u>	<u>30</u>	<u>6</u>	<u>197</u>	<u>10</u>	<u>40</u>	<u>6</u>	<u>184</u>
P 4 <u>15</u>	<u>36</u>	<u>9</u>	<u>307</u>	<u>15</u>	<u>34</u>	<u>9</u>	<u>286</u>
P 5 <u>20</u>	<u>25</u>	<u>12</u>	<u>362</u>	<u>20</u>	<u>32</u>	<u>12</u>	<u>335</u>
P 6 <u>25</u>	<u>25</u>	<u>15</u>	<u>398</u>	<u>25</u>	<u>32</u>	<u>15</u>	<u>371</u>
P 7 <u>30</u>	<u>25</u>	<u>18</u>	<u>424</u>	<u>30</u>	<u>32</u>	<u>18</u>	<u>398</u>
P 8 _____	_____	<u>21</u>	<u>443</u>	<u>35</u>	<u>32</u>	<u>21</u>	<u>422</u>
P 9 _____	_____	<u>24</u>	<u>460</u>	_____	_____	<u>24</u>	<u>434</u>
P10 _____	_____	<u>27</u>	<u>472</u>	_____	_____	<u>27</u>	<u>447</u>
P11 _____	_____	<u>30</u>	<u>481</u>	_____	_____	<u>30</u>	<u>451</u>
P12 _____	_____	_____	_____	_____	_____	_____	_____
P13 _____	_____	_____	_____	_____	_____	_____	_____
P14 _____	_____	_____	_____	_____	_____	_____	_____
P15 _____	_____	_____	_____	_____	_____	_____	_____
P16 _____	_____	_____	_____	_____	_____	_____	_____
P17 _____	_____	_____	_____	_____	_____	_____	_____
P18 _____	_____	_____	_____	_____	_____	_____	_____
P19 _____	_____	_____	_____	_____	_____	_____	_____
P20 _____	_____	_____	_____	_____	_____	_____	_____

Company Range Oil Company, Inc. Lease & Well No. Atkinson #2
 Elevation 1307 Kelly Bushing Formation Bartleville Effective Pay - Ft. Ticket No. 7901
 Date 5/20/81 Sec. 24 Twp. 32S Range 5E County Cowley State Kansas
 Test Approved by Joe M Baker Western Representative Kenny Kirkendall

Formation Test No. 2 Interval Tested from 3005 ft. to 3025 ft. Total Depth 3025 ft.
 Packer Depth 3005 ft. Size 6 3/4 in. Packer Depth - ft. Size - in.
 Packer Depth 3000 ft. Size 6 3/4 in. Packer Depth - ft. Size - in.
 Depth of Selective Zone Set -

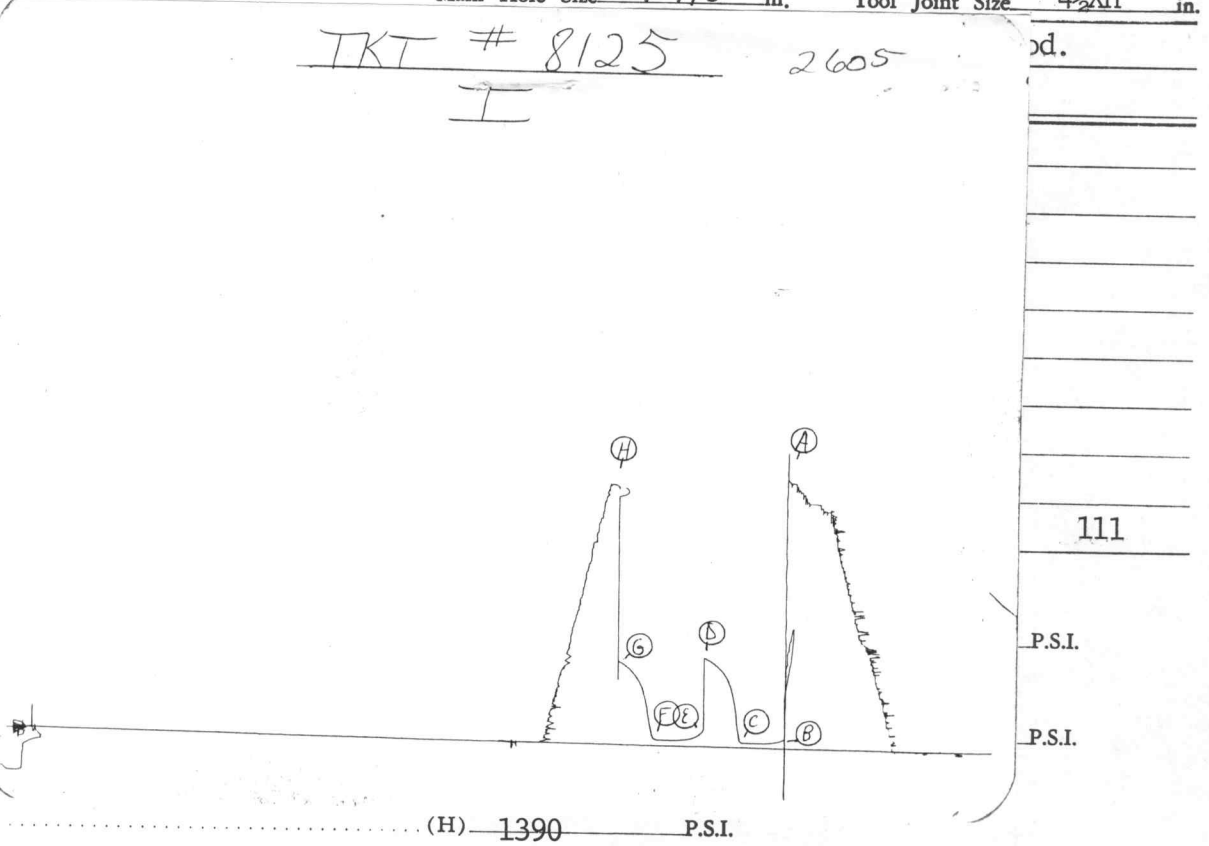
Top Recorder Depth (Inside) 3010 ft. Recorder Number 2605 Cap. 4150
 Bottom Recorder Depth (Outside) 3015 ft. Recorder Number 10266 Cap. 4500
 Below Straddle Recorder Depth - ft. Recorder Number - Cap. -

Drilling Contractor Range Oil Company Rig #3 Drill Collar Length 60 I. D. - in.
 Mud Type Chemical Viscosity 38 Weight Pipe Length - I. D. - in.
 Weight 9.5 Water Loss 12.8 cc. Drill Pipe Length 2923 I. D. - in.
 Chlorides 12000 P.P.M. Test Tool Length 18 ft. Tool Size 5 1/2 in.
 Jars: Make No Serial Number - Anchor Length 20 ft. Size 5 1/2 in.
 Did Well Flow? No Reversed Out No Surface Choke Size 3/4 in. Bottom Choke Size 3/4 in.
 Main Hole Size 7 7/8 in. Tool Joint Size 4 1/2 XH in.

Blow: Fair blow - 6
 Recovered 150 ft. of
 Recovered _____ ft. of
 Recovered _____ ft. of
 Recovered _____ ft. of
 Recovered _____ ft. of
 Remarks: _____

TKT # 8125 2605
I

Time Set Packer(s) 9:50
 Initial Hydrostatic Pressure
 Initial Flow Period
 Initial Closed In Period
 Final Flow Period
 Final Closed In Period
 Final Hydrostatic Pressure



WESTERN TESTING CO., INC.
Pressure Data

Date 5/20/81 Recorder No. 2605 Capacity 4150 Test Ticket No. 7901
 Clock No. - Elevation 1307 Kelly Bushing Location 3010 Ft. 111 Well Temperature _____ °F

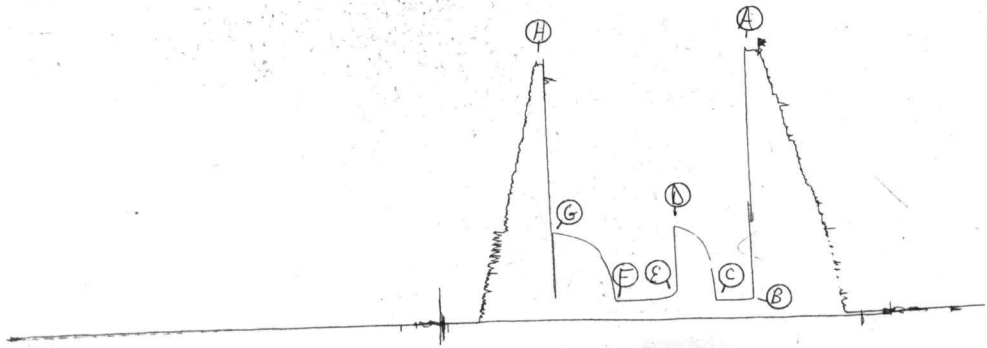
Point	Pressure		Time Given	Time Computed
A Initial Hydrostatic Mud	<u>1431</u>	P.S.I.	<u>9:50</u>	<u>M</u>
B First Initial Flow Pressure	<u>91</u>	P.S.I.	<u>30</u>	<u>Mins. 30 Mins.</u>
C First Final Flow Pressure	<u>88</u>	P.S.I.	<u>30</u>	<u>Mins. 30 Mins.</u>
D Initial Closed-in Pressure	<u>500</u>	P.S.I.	<u>45</u>	<u>Mins. 45 Mins.</u>
E Second Initial Flow Pressure	<u>127</u>	P.S.I.	<u>45</u>	<u>Mins. 45 Mins.</u>
F Second Final Flow Pressure	<u>98</u>	P.S.I.		
G Final Closed-in Pressure	<u>479</u>	P.S.I.		
H Final Hydrostatic Mud	<u>1390</u>	P.S.I.		

PRESSURE BREAKDOWN

Point Mins.	First Flow Pressure		Initial Shut-In		Second Flow Pressure		Final Shut-In	
	Breakdown:	Inc.	Breakdown:	Inc.	Breakdown:	Inc.	Breakdown:	Inc.
	of <u>5</u> mins. and a final inc. of <u>0</u> Min.		of <u>3</u> mins. and a final inc. of <u>0</u> Min.		of <u>5</u> mins. and a final inc. of <u>0</u> Min.		of <u>3</u> mins. and a final inc. of <u>0</u> Min.	
Point Mins.	Press.	Point Minutes	Press.	Point Minutes	Press.	Point Minutes	Press.	
P 1 <u>0</u>	<u>91</u>	<u>0</u>	<u>88</u>	<u>0</u>	<u>127</u>	<u>0</u>	<u>98</u>	
P 2 <u>5</u>	<u>89</u>	<u>3</u>	<u>260</u>	<u>5</u>	<u>114</u>	<u>3</u>	<u>212</u>	
P 3 <u>10</u>	<u>88</u>	<u>6</u>	<u>358</u>	<u>10</u>	<u>108</u>	<u>6</u>	<u>282</u>	
P 4 <u>15</u>	<u>88</u>	<u>9</u>	<u>405</u>	<u>15</u>	<u>101</u>	<u>9</u>	<u>324</u>	
P 5 <u>20</u>	<u>88</u>	<u>12</u>	<u>430</u>	<u>20</u>	<u>100</u>	<u>12</u>	<u>373</u>	
P 6 <u>25</u>	<u>88</u>	<u>15</u>	<u>451</u>	<u>25</u>	<u>99</u>	<u>15</u>	<u>396</u>	
P 7 <u>30</u>	<u>88</u>	<u>18</u>	<u>466</u>	<u>30</u>	<u>98</u>	<u>18</u>	<u>413</u>	
P 8 _____		<u>21</u>	<u>477</u>	<u>35</u>	<u>98</u>	<u>21</u>	<u>426</u>	
P 9 _____		<u>24</u>	<u>487</u>	<u>40</u>	<u>98</u>	<u>24</u>	<u>436</u>	
P10 _____		<u>27</u>	<u>494</u>	<u>45</u>	<u>98</u>	<u>27</u>	<u>445</u>	
P11 _____		<u>30</u>	<u>500</u>			<u>30</u>	<u>451</u>	
P12 _____						<u>33</u>	<u>458</u>	
P13 _____						<u>36</u>	<u>466</u>	
P14 _____						<u>39</u>	<u>470</u>	
P15 _____						<u>42</u>	<u>475</u>	
P16 _____						<u>45</u>	<u>479</u>	
P17 _____								
P18 _____								
P19 _____								
P20 _____								

TKT # 7901
I

DST #2
2605



Company Range Oil Company, Inc. Lease & Well No. Atkinson #2
 Elevation 1307 Kelly Bushing Formation Mississippi Effective Pay - Ft. Ticket No. 7902
 Date 5/20/81 Sec. 24 Twp. 32S Range 5E County Cowley State Kansas
 Test Approved by Joe M. Baker Western Representative Kenny Kirkendall

Formation Test No. 3 Interval Tested from 3088 ft. to 3107 ft. Total Depth 3107 ft.
 Packer Depth 3088 ft. Size 6 3/4 in. Packer Depth - ft. Size - in.
 Packer Depth 3083 ft. Size 6 3/4 in. Packer Depth - ft. Size - in.

Depth of Selective Zone Set -
 Top Recorder Depth (Inside) 3093 ft. Recorder Number 2605 Cap. 4150
 Bottom Recorder Depth (Outside) 3098 ft. Recorder Number 10266 Cap. 4650
 Below Straddle Recorder Depth - ft. Recorder Number - Cap. -
 Drilling Contractor Range Drilling Rig #3 Drill Collar Length 60 I. D. - in.
 Mud Type chemical Viscosity 46 Weight Pipe Length - I. D. - in.
 Weight 9.5 Water Loss 12 cc. Drill Pipe Length 3030 I. D. - in.
 Chlorides 1,200 P.P.M. Test Tool Length 18 ft. Tool Size - in.
 Jars: Make NO Serial Number - Anchor Length 19 ft. Size 5 1/2 in.
 Did Well Flow? No Reversed Out - Surface Choke Size 3/4 in. Bottom Choke Size 3/4 in.
 Main Hole Size 7 7/8 in. Tool Joint Size 4 1/2 XH in.

Blow: Initial flow very weak; died in three minutes. No blow final flow period.

Recovered 10 ft. of mud
 Recovered _____ ft. of _____
 Recovered _____ ft. of _____
 Recovered _____ ft. of _____
 Recovered _____ ft. of _____

Remarks: _____

Time Set Packer(s) 1:00 ~~P.M.~~ ^{A.M.} Time Started Off Bottom 3:10 ~~P.M.~~ ^{A.M.} Maximum Temperature 117°
 Initial Hydrostatic Pressure (A) 1493 P.S.I.
 Initial Flow Period Minutes 30 (B) 63 P.S.I. to (C) 44 P.S.I.
 Initial Closed In Period Minutes 30 (D) 44 P.S.I.
 Final Flow Period Minutes 30 (E) 44 P.S.I. to (F) 44 P.S.I.
 Final Closed In Period Minutes 27 (G) 44 P.S.I.
 Final Hydrostatic Pressure (H) 1454 P.S.I.

WESTERN TESTING CO., INC.
Pressure Data

Date 5/20/81 Test Ticket No. 7902
 Recorder No. 2605 Capacity 4150 Location 3093 Ft.
 Clock No. _____ Elevation _____ Well Temperature _____ °F
1307 Kelly Bushing 117

Point	Pressure	P.S.I.	Open Tool	Time Given	Time Computed
				Mins.	Mins.
A Initial Hydrostatic Mud	1493	P.S.I.	Open Tool	1:10A	M
B First Initial Flow Pressure	63	P.S.I.	First Flow Pressure	30	30
C First Final Flow Pressure	44	P.S.I.	Initial Closed-in Pressure	30	30
D Initial Closed-in Pressure	44	P.S.I.	Second Flow Pressure	30	30
E Second Initial Flow Pressure	44	P.S.I.	Final Closed-in Pressure	30	27
F Second Final Flow Pressure	44	P.S.I.			
G Final Closed-in Pressure	44	P.S.I.			
H Final Hydrostatic Mud	1454	P.S.I.			

PRESSURE BREAKDOWN

Point Mins.	First Flow Pressure		Initial Shut-In		Second Flow Pressure		Final Shut-In	
	Breakdown:	Inc.	Breakdown:	Inc.	Breakdown:	Inc.	Breakdown:	Inc.
	6		10		6		9	
	of 5	mins. and a	of 3	mins. and a	of 5	mins. and a	of 3	mins. and a
	final inc. of 0	Min.	final inc. of 0	Min.	final inc. of 0	Min.	final inc. of 0	Min.
Point Mins.	Press.	Point Minutes	Press.	Point Minutes	Press.	Point Minutes	Press.	
P 1 0	63	0	44	0	44	0	44	
P 2 5	53	3	44	5	44	3	44	
P 3 10	45	6	44	10	44	6	44	
P 4 15	45	9	44	15	44	9	44	
P 5 20	45	12	44	20	44	12	44	
P 6 25	45	15	44	25	44	15	44	
P 7 30	44	18	44	30	44	18	44	
P 8		21	44			21	44	
P 9		24	44			24	44	
P10		27	44			27	44	
P11		30	44					
P12								
P13								
P14								
P15								
P16								
P17								
P18								
P19								
P20								

D5+
#3

JK # 7902

I

2600

