

WESTERN TESTING CO. INC.
SUBSURFACE PRESSURE SURVEY

DATE: 11/15/83
CUSTOMER: TOMCO OIL
WELL: 1
ELEVATION (KB): 1247
SECTION: 36
RANGE: 4E
GAUGE SN #13266

TEST: 1

FORMATION: LOWER HOOVER
TOWNSHIP: 32S

COUNTY: COWLEY
RANGE: 4200

TICKET #19118
LEASE: "B" HITTLE
GEOLOGIST: D. TATUM
STATE: KANSAS
CLOCK: 12

INTERVAL TEST FROM: 1794 FT TO: 1804 FT TOTAL DEPTH: 1804 FT
DEPTH OF SELECTIVE ZONE: FT
PACKER DEPTH: 1794 FT SIZE: 6 3/4 IN PACKER DEPTH: FT SIZE: IN
PACKER DEPTH: FT SIZE: IN PACKER DEPTH: FT SIZE: IN

DRILLING CONTRACTOR: WHITE & ELLIS #4
MUD TYPE: CHEMICAL VISCOSITY: 54
WEIGHT: 9.2 WATER LOSS (CC): 9.6
CHLORIDES (P.P.M.): 1400

JARS - MAKE: SERIAL NUMBER:
DID WELL FLOW? NO REVERSED OUT? NO

DRILL COLLAR LENGTH: 180 FT I.D.: 2.25 IN
WEIGHT PIPE LENGTH: FT I.D.: IN
DRILL PIPE LENGTH: 1599 FT I.D.: 3.8 IN
TEST TOOL LENGTH: 15 FT TOOL SIZE: 5 1/2 O.D. IN
ANCHOR LENGTH: 10 FT SIZE: 5 1/2 O.D. IN
SURFACE CHOKE SIZE: 3/4 IN BOTTOM CHOKE SIZE: 3/4 IN
MAIN HOLE SIZE: 7 7/8 IN TOOL JOINT SIZE: 4 1/2 X.H. IN

BLOW: FAIR DIMINISHING TO WEAK AT END OF TEST.

RECOVERED: 60 FT OF: GAS ABOVE FLUID
RECOVERED: 180 FT OF: GAS CUT MUDDY SALT WATER
RECOVERED: 240 FT OF: SALT WATER
RECOVERED: FT OF: CHLORIDES 55000 P.P.M.
RECOVERED: FT OF:
RECOVERED: FT OF:
RECOVERED: FT OF:
RECOVERED: FT OF:
RECOVERED: FT OF:

REMARKS:

TIME SET PACKER(S): 12:45 P.M.

TIME STARTED OFF BOTTOM: 3:00 P.M.

WELL TEMPERATURE: 92 °F

INITIAL HYDROSTATIC PRESSURE:

(A) 888 PSI

INITIAL FLOW PERIOD MIN: 10

(B) 94 PSI TO (C) 98 PSI

INITIAL CLOSED IN PERIOD MIN: 30

(D) 659 PSI

FINAL FLOW PERIOD MIN: 60

(E) 144 PSI TO (F) 220 PSI

FINAL CLOSED IN PERIOD MIN: 30

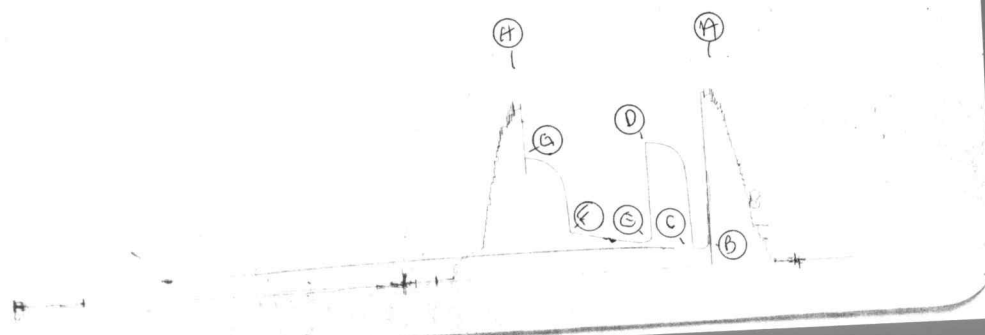
(G) 612 PSI

FINAL HYDROSTATIC PRESSURE

(H) 868 PSI

HC# 19118

I



WESTERN TESTING CO. INC.
SUBSURFACE PRESSURE SURVEY

DATE: 11/19/83
CUSTOMER: TOMCO OIL
WELL: 1
ELEVATION (KB): 1247
SECTION: 36
RANGE: 4E
GAUGE SN #13266

TEST: 2

FORMATION: CATTLEMAN
TOWNSHIP: 32S

COUNTY: COWLEY
RANGE: 4200

TICKET #19120
LEASE: "B" HITTLE
GEOLOGIST: M. DUBOIS
STATE: KANSAS
CLOCK: 12

INTERVAL TEST FROM: 2960 FT TO: 2970 FT TOTAL DEPTH: 2970 FT
DEPTH OF SELECTIVE ZONE: FT
PACKER DEPTH: 2960 FT SIZE: 6 3/4 IN PACKER DEPTH: 2955 FT SIZE: 6 3/4 IN
PACKER DEPTH: FT SIZE: IN PACKER DEPTH: FT SIZE: IN

DRILLING CONTRACTOR: WHITE & ELLIS #4
MUD TYPE: CHEMICAL VISCOSITY: 45
WEIGHT: 9.1 WATER LOSS (CC): 9.8
CHLORIDES (P.P.M.): 1300

JARS - MAKE: NO SERIAL NUMBER:
DID WELL FLOW? NO REVERSED OUT? NO

DRILL COLLAR LENGTH: 180 FT I.D.: 2.25 IN
WEIGHT PIPE LENGTH: FT I.D.: IN
DRILL PIPE LENGTH: 2760 FT I.D.: 3.8 IN
TEST TOOL LENGTH: 20 FT TOOL SIZE: 5 1/2 O.D. IN
ANCHOR LENGTH: 10 FT SIZE: 5 1/2 O.D. IN
SURFACE CHOKE SIZE: 3/4 IN BOTTOM CHOKE SIZE: 3/4 IN
MAIN HOLE SIZE: 7 7/8 IN TOOL JOINT SIZE: 4 1/2 X.H. IN

BLOW: WEAK 5 MINUTES ON INITIAL FLOW PERIOD.
VERY WEAK 2 MINUTES ON FINAL FLOW PERIOD.

RECOVERED: 20 FT OF: DRILLING MUD WITH A VERY SLIGHT SHOW OF OIL
RECOVERED: FT OF:
RECOVERED: FT OF:
RECOVERED: FT OF:
RECOVERED: FT OF:
RECOVERED: FT OF:
RECOVERED: FT OF:
RECOVERED: FT OF:
RECOVERED: FT OF:

REMARKS:

TIME SET PACKER(S): 9:00 A.M.
WELL TEMPERATURE: 107 °F
INITIAL HYDROSTATIC PRESSURE:
INITIAL FLOW PERIOD MIN: 30
INITIAL CLOSED IN PERIOD MIN: 33
FINAL FLOW PERIOD MIN: 15
FINAL CLOSED IN PERIOD MIN: 12
FINAL HYDROSTATIC PRESSURE

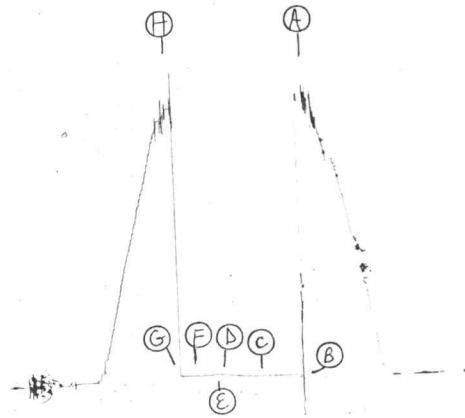
TIME STARTED OFF BOTTOM: 10:30 A.M.
(A) 1436 PSI
(B) 17 PSI TO (C) 20 PSI
(D) 39 PSI
(E) 34 PSI TO (F) 34 PSI
(G) 34 PSI
(H) 1416 PSI

TKT # 19120

I

13268

DST # 2 1920



WESTERN TESTING CO. INC.
SUBSURFACE PRESSURE SURVEY

DATE: 11/19/83
CUSTOMER: TOMCO OIL
WELL: 1
ELEVATION (KB): 1247
SECTION: 36
RANGE: 4E
GAUGE SN #13266

TEST: 3
COUNTY: COWLEY
RANGE: 4200

TICKET #19121
LEASE: "B" HITTLE
GEOLOGIST: T. BLAIR
FORMATION: CATTLEMAN
TOWNSHIP: 32S
STATE: KANSAS
CLOCK: 12

INTERVAL TEST FROM: 2966 FT TO: 2977 FT TOTAL DEPTH: 2977 FT
DEPTH OF SELECTIVE ZONE: FT
PACKER DEPTH: 2966 FT SIZE: 6 3/4 IN PACKER DEPTH: 2961 FT SIZE: 6 3/4 IN
PACKER DEPTH: FT SIZE: IN PACKER DEPTH: FT SIZE: IN

DRILLING CONTRACTOR: WHITE & ELLIS #4
MUD TYPE: CHEMICAL VISCOSITY: 49
WEIGHT: 9.0 WATER LOSS (CC): 9.5
CHLORIDES (P.P.M.): 1300

JARS - MAKE: NO SERIAL NUMBER:
DID WELL FLOW? NO REVERSED OUT? NO
DRILL COLLAR LENGTH: 180 FT I.D.: 2.25 IN
WEIGHT PIPE LENGTH: FT I.D.: IN
DRILL PIPE LENGTH: 2766 FT I.D.: 3.8 IN
TEST TOOL LENGTH: 20 FT TOOL SIZE: 5 1/2 O.D. IN
ANCHOR LENGTH: 11 FT SIZE: 5 1/2 O.D. IN
SURFACE CHOKE SIZE: 3/4 IN BOTTOM CHOKE SIZE: 3/4 IN
MAIN HOLE SIZE: 7 7/8 IN TOOL JOINT SIZE: 4 1/2 X.H. IN

BLOW: FAIR TO WEAK ON INITIAL FLOW PERIOD.
WEAK THRUOUT FINAL FLOW PERIOD.

RECOVERED: 80 FT OF: MUDDY SALT WATER WITH VERY SLIGHT SHOW OF OIL
RECOVERED: 120 FT OF: SALT WATER
RECOVERED: FT OF: CHLORIDES 31000 P.P.M.
RECOVERED: FT OF:
RECOVERED: FT OF:
RECOVERED: FT OF:
RECOVERED: FT OF:
RECOVERED: FT OF:
RECOVERED: FT OF:
RECOVERED: FT OF:

REMARKS:

TIME SET PACKER(S): 6:30 P.M.
WELL TEMPERATURE: 107 °F

TIME STARTED OFF BOTTOM: 8:45 P.M.

INITIAL HYDROSTATIC PRESSURE:	(A) 1438	PSI	
INITIAL FLOW PERIOD MIN: 30	(B) 45	PSI TO (C) 64	PSI
INITIAL CLOSED IN PERIOD MIN: 27	(D) 318	PSI	
FINAL FLOW PERIOD MIN: 30	(E) 114	PSI TO (F) 117	PSI
FINAL CLOSED IN PERIOD MIN: 42	(G) 322	PSI	
FINAL HYDROSTATIC PRESSURE	(H) 1388	PSI	

TKT # 19121

I

