

**IMPORTANT**  
 Kans. Geo. Survey request  
 samples on this well.

State Geological Survey **20-33-1E**

**KANSAS**

**WELL COMPLETION REPORT AND  
 DRILLER'S LOG**

API No. 15 — 191 — 21,102  
 County Number

Operator  
NATIONAL COOPERATIVE REFINERY ASSOCIATION

Address  
Box 6, GREAT BEND, KANSAS 67530

Well No. 1 Lease Name BUCKINGHAM

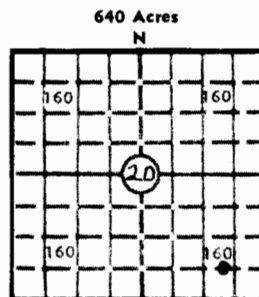
Footage Location  
660 feet from (S) line 810 feet from (E) line SE/4

Principal Contractor DUNBAR DRLG. Co. Geologist DELBERT J. COSTA

Spud Date 11-20-80 Date Completed 12-5-80 Total Depth 4300' P.B.T.D.

Directional Deviation Oil and/or Gas Purchaser

WICHITA, BRANCH  
 S. 20 T. 33 R. 1 E  
 Loc. 150' W OF C SE SE  
 County SUMNER



Locate well correctly  
 Elev.: Gr. 1282'  
 DF KB 1287'

**CASING RECORD**

Report of all strings set — surface, intermediate, production, etc.

Purpose of string	Size hole drilled	Size casing set (in O.D.)	Weight lbs/ft.	Setting depth	Type cement	Sacks	Type and percent additives
SURFACE	12 1/4"	8 5/8	24#	300	60/40 Poz.	275	

**LINER RECORD**

**PERFORATION RECORD**

Top, ft.	Bottom, ft.	Sacks cement	Shots per ft.	Size & type	Depth interval

**TUBING RECORD**

Size	Setting depth	Packer set at

**ACID, FRACTURE, SHOT, CEMENT SQUEEZE RECORD**

Amount and kind of material used	Depth interval treated

**INITIAL PRODUCTION**

Date of first production		Producing method (flowing, pumping, gas lift, etc.)			
RATE OF PRODUCTION PER 24 HOURS	Oil bbls.	Gas MCF	Water bbls.	Gas-oil ratio	CFPB
Disposition of gas (vented, used on lease or sold)			Producing interval (s)		

INSTRUCTIONS: As provided in KCC Rule 82-2-125, within 90 days after completion of a well, one completed copy of this Drillers Log shall be transmitted to the State Geological Survey of Kansas, 4150 Monroe Street, Wichita, Kansas 67209. Copies of this form are available from the Conservation Division, State Corporation Commission, 245 No. Water, Wichita, Kansas 67202. Phone AC 316-522-2206. If confidential custody is desired, please note Rule 82-2-125. Drillers Logs will be on open file in the Oil and Gas Division, State Geological Survey of Kansas, Lawrence, Kansas 66044.

Operator NATIONAL COOPERATIVE REFINERY ASSOCIATION DESIGNATE TYPE OF COMP.: OIL, GAS, DRY HOLE, SWDW, ETC.: DRY HOLE

Well No. 1 Lease Name BUCKINGHAM

S 20 T 33 R 1 E 150' W OF C SE SE

WELL LOG Show all important zones of porosity and contents thereof; cored intervals, and all drill-stem tests, including depth interval tested, cushion used, time tool open, flowing and shut-in pressures, and recoveries. SHOW GEOLOGICAL MARKERS, LOGS RUN, OR OTHER DESCRIPTIVE INFORMATION.

FORMATION DESCRIPTION, CONTENTS, ETC.	TOP	BOTTOM	NAME	DEPTH
SEE GEOLOGICAL REPORT ATTACHED				

USE ADDITIONAL SHEETS, IF NECESSARY, TO COMPLETE WELL RECORD.

Date Received

*James J. [Signature]*  
 Signature  
 DISTRICT SUPERINTENDENT  
 Title  
 JANUARY 15, 1981  
 Date



90-23-1E