

OILFIELD RESEARCH LABORATORIES

536 NORTH HIGHLAND - CHANUTE, KANSAS 66720 - PHONE (316) 431-2650

March 7, 1980

TRIANGLE Petroleum Company, Inc.
Box 1047
Independence, Kansas 67301

Gentlemen:

Enclosed herewith are the results of tests run on the rotary core taken from the Edds Lease, Well No. 2, Montgomery County, Kansas, and submitted to our laboratory on February 27, 1980.

The core was sampled and sealed in plastic bags by a representative of the client.

Your business is greatly appreciated.

Very truly yours,

OILFIELD RESEARCH LABORATORIES


Sanford A. Michel

SAM/tem
20 c to Independence, Kansas

Oilfield Research Laboratories

GENERAL INFORMATION & SUMMARY

Company TRIANGLE Petroleum Co., Inc. Lease Edds Well No. 2

Location NW $\frac{1}{4}$

Section 27 Twp. 33S Rge. 14E County Montgomery State Kansas

Elevation, Feet

Name of Sand	Wayside
Top of Core	666.0
Bottom of Core	708.0
Top of Sand	667.0
Bottom of Sand	707.2
Total Feet of Permeable Sand	38.3

Distribution of Permeable Sand: Permeability Range Millidarcys	Feet	Cum. Ft.
0 - 2	6.8	6.8
2 - 4	7.7	14.5
4 - 6	8.5	23.0
6 - 8	6.0	29.0
8 - 16	7.0	36.0
40 & Above	2.3	38.3

Average Permeability Millidarcys	7.5
Average Percent Porosity	16.8
Average Percent Oil Saturation	18.6
Average Percent Water Saturation	64.2
Average Oil Content, Bbls./A. Ft.	242.
Total Oil Content, Bbls./Acre	9,724.

LOGName TRIANGLE Petroleum Company, Inc. Lease Edds Well No. 2

<u>Depth Interval, Feet</u>	<u>Description</u>
666.0 - 667.0	Gray sandy shale.
667.0 - 667.5	Gray shaly sandstone.
667.5 - 668.7	Gray sandstone.
668.7 - 669.8	Gray slightly shaly sandstone.
669.8 - 670.9	Gray sandstone.
670.9 - 672.8	Gray shaly sandstone.
672.8 - 673.9	Gray sandstone.
673.9 - 677.0	Gray shaly sandstone.
677.0 - 678.0	Gray sandstone.
678.0 - 679.8	Gray shaly sandstone.
679.8 - 684.1	Light brown shaly sandstone.
684.1 - 686.2	Light brown slightly shaly sandstone.
686.2 - 687.3	Brown shaly sandstone.
687.3 - 689.0	Brown slightly shaly sandstone.
689.0 - 705.8	Light brown shaly sandstone.
705.8 - 707.2	Gray very shaly sandstone.
707.2 - 708.0	Gray sandy shale.

Oilfield Research Laboratories

RESULTS OF SATURATION & PERMEABILITY TESTS

TABLE 1-B

Company TRIANGLE Petroleum Company, Inc. Lease Edds

Well No. 2

Sample No.	Depth, Feet	Effective Porosity Percent	Percent Saturation			Oil Content Bbbs. / A Ft.	Perm., Mill.	Feet of Sand		Total Oil Content	Perm. Capacity Ft. X md.
			Oil	Water	Total			Ft.	Cum. Ft.		
1	667.1	8.2	13	83	96	83	Imp.	0.5	42	0.00	
2	668.0	20.8	7	68	75	113	45.	1.2	136	54.00	
3	668.9	20.7	7	69	76	112	10.	1.1	123	11.00	
4	670.1	19.7	5	71	76	76	46.	1.1	84	50.60	
5	671.3	17.2	8	71	79	107	6.3	1.0	107	6.30	
6	672.7	14.0	6	74	80	65	2.8	0.9	59	2.52	
7	673.8	19.1	14	60	74	207	14.	1.1	228	15.40	
8	674.5	16.3	9	74	83	114	4.2	1.1	125	4.62	
9	675.5	17.6	9	66	75	123	4.2	1.0	123	4.20	
10	676.5	17.3	15	64	79	201	3.1	1.0	201	3.10	
11	677.5	18.4	9	62	71	129	14.	1.0	129	14.00	
12	678.5	15.4	14	70	84	167	3.9	1.0	167	3.90	
13	679.5	15.0	16	74	90	186	2.6	1.0	149	2.08	
14	680.9	16.6	23	57	80	300	4.5	0.8	390	5.85	
15	681.6	18.1	24	51	75	337	6.3	1.3	337	6.30	
16	682.5	17.8	22	55	77	304	4.6	1.0	304	4.60	
17	683.8	16.0	22	56	78	307	6.2	1.0	307	6.20	
18	684.5	18.8	15	56	71	219	10.	1.0	241	11.00	
19	685.5	18.8	30	46	76	438	9.3	1.2	438	9.30	
20	686.7	15.5	24	63	87	289	5.0	1.0	318	5.50	
21	687.7	18.1	28	51	79	393	11.	1.1	275	7.70	
22	688.6	18.1	28	51	79	393	10.	1.0	393	10.00	
23	689.5	17.9	30	53	83	417	4.4	1.0	417	4.40	
24	690.7	16.7	23	64	87	298	2.6	1.0	298	2.60	
25	691.5	18.9	26	50	76	381	6.5	1.0	381	6.50	
26	692.6	16.0	23	65	88	286	7.3	1.0	286	7.30	

Oilfield Research Laboratories

RESULTS OF SATURATION & PERMEABILITY TESTS

TABLE 1-B

Company TRIANGLE Petroleum Company, Inc. Lease Edds Well No. 2

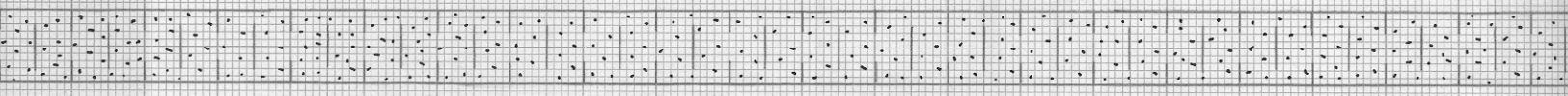
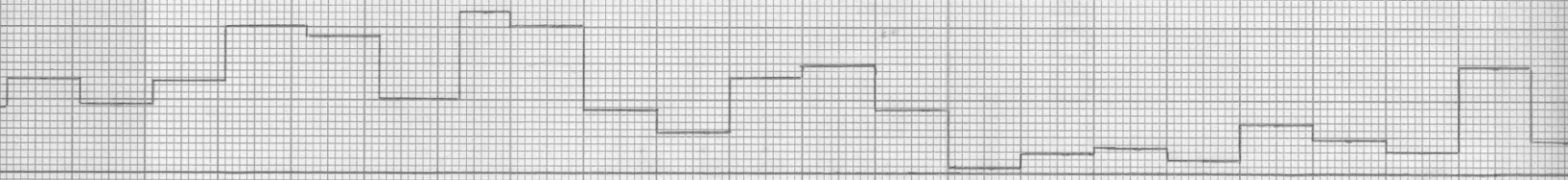
Sample No.	Depth, Feet	Effective Porosity Percent	Percent Saturation		Oil Content Bbbs. / A Ft.	Perm., Mill.	Feet of Sand		Total Oil Content	Perm. Capacity Ft. X md.
			Oil	Water			Ft.	Cum. Ft.		
27	693.7	15.8	24	66	294	4.4	1.0	27.0	294	4.40
28	694.6	16.8	17	68	222	0.24	1.0	28.0	222	0.24
29	695.6	16.7	28	68	363	1.3	1.0	29.0	363	1.30
30	696.6	16.0	11	76	137	1.6	1.0	30.0	137	1.60
31	697.7	14.6	31	61	351	0.81	1.0	31.0	351	0.81
32	698.5	13.9	6	81	65	3.3	1.0	32.0	65	3.30
33	699.5	15.9	23	64	284	2.2	1.0	33.0	284	2.20
34	700.5	15.9	27	62	333	1.5	1.0	34.0	333	1.50
35	701.5	15.5	26	64	313	7.1	1.0	35.0	313	7.10
36	702.5	15.7	16	70	195	2.1	1.0	36.0	195	2.10
37	703.5	15.8	25	65	306	4.1	1.0	37.0	306	4.10
38	704.5	16.7	28	58	363	0.27	1.0	38.0	363	0.27
39	705.5	15.4	32	56	382	0.37	0.8	38.8	306	0.30
40	706.7	15.4	8	85	96	Imp.	1.4	40.2	134	0.00

Oilfield Research Laboratories

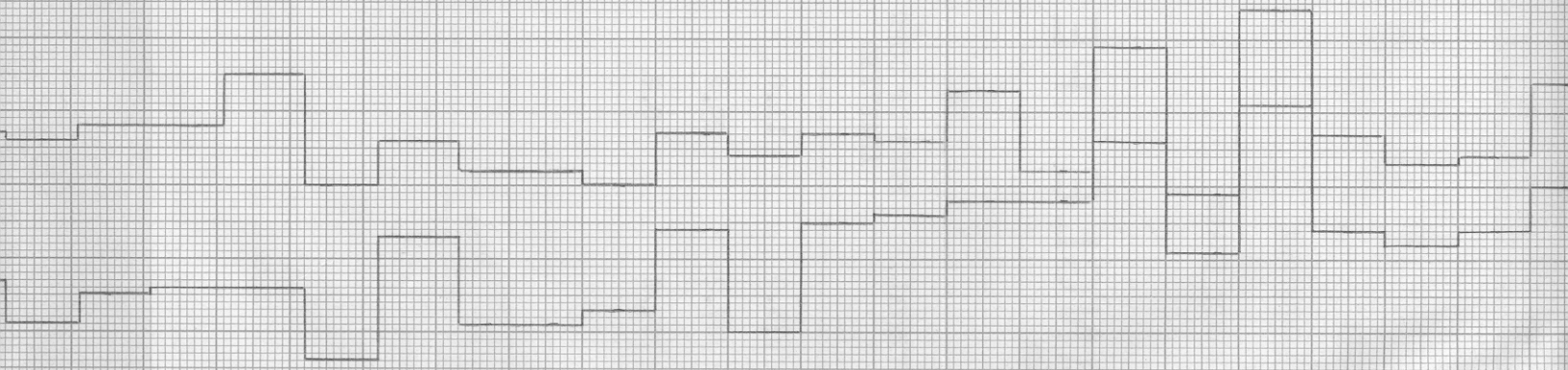
SUMMARY OF PERMEABILITY & SATURATION TESTS

TABLE III

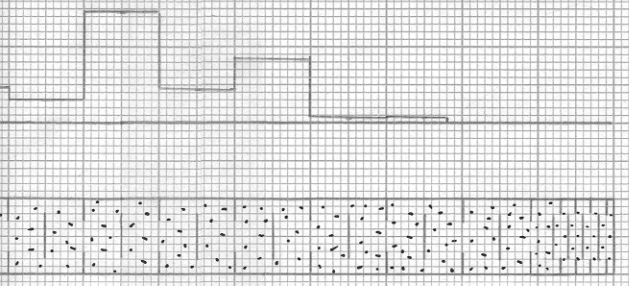
Company		Lease		Well No.		
TRIANGLE Petroleum Company, Inc.		Edds		2		
Depth Interval, Feet	Feet of Core Analyzed	Average Porosity	Average Percent Oil Saturation	Average Percent Water Saturation	Average Oil Content Bbl./A. Ft.	Total Oil Content Bbls./Acre
667.0 - 678.0	10.5	17.8	9.1	68.6	123	1,357
678.0 - 707.2	27.8	16.5	22.1	62.6	287	8,367
667.0 - 707.2	38.3	16.8	18.6	64.2	242	9,724




681 682 683 684 685 686 687 688 689 690 691 692 693 694 695 696 697 698 699 700 701 702



700
701
702
703
704
705
706
707
708



KEY:

 SANDSTONE

 SHALY SANDSTONE

 SANDY SHALE

TRIANGLE PETROLEUM COMPANY, INC.

EDDS LEASE WELL NO. 2

MONTGOMERY COUNTY, KANSAS

DEPTH INTERVAL, FEET	FEET OF CORE ANALYZED	AVERAGE POROSITY PERCENT	AVG. OIL SATURATION PERCENT	AVG. WATER SATURATION PERCENT	AVERAGE PERMEABILITY, MILLIDARCY
667.0 - 678.0	11.0	17.8	9.1	68.6	15.8
678.0 - 707.2	29.2	16.5	22.1	62.6	4.4
667.0 - 707.2	40.2	16.8	18.6	64.2	7.5