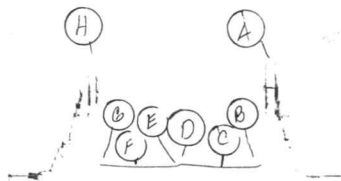


Tkt # 2599
I



Company Range Oil Company, Inc. Lease & Well No. Meadows "D"#2
 Elevation 1179 Kelly Bushing Formation Admire Effective Pay -- Ft. Ticket No. 2599
 Date 6/22/79 Sec. 21 Twp. 33S Range 4E County Cowley State Kansas
 Test Approved by Stephen M. Kreidler Western Representative Norman Allen

Formation Test No. 1 Interval Tested from 695 ft. to 730 ft. Total Depth 730 ft.
 Packer Depth 695 ft. Size 6 3/4 in. Packer Depth - ft. Size - in.
 Packer Depth 690 ft. Size 6 3/4 in. Packer Depth - ft. Size - in.
 Depth of Selective Zone Set -

Top Recorder Depth (Inside) 723 ft. Recorder Number 1564 Cap. 3150
 Bottom Recorder Depth (Outside) 726 ft. Recorder Number 1562 Cap. 3150
 Below Straddle Recorder Depth - - ft. Recorder Number - Cap. -

Drilling Contractor Range Drilling Co. Drill Collar Length 250 I. D. 2 1/4 in.
 Mud Type gel Viscosity 37 Weight Pipe Length - I. D. - in.
 Weight 9.3 Water Loss 14.8 cc. Drill Pipe Length 425 I. D. 3.8 in.
 Chlorides 1,000 P.P.M. Test Tool Length 55 ft. Tool Size 4 1/2 OD in.
 Jars: Make -- Serial Number -- Anchor Length 35 ft. Size 4 1/2 OD in.
 Did Well Flow? No Reversed Out No Surface Choke Size 3/4 in. Bottom Choke Size 3/4 in.
 Main Hole Size 7 7/8 in. Tool Joint Size 4 1/2 XH in.

Blow: Weak 10 minutes.

Recovered 10 ft. of drilling mud
 Recovered - ft. of -
 Recovered - ft. of -
 Recovered - ft. of -
 Recovered - ft. of -

Remarks: -

Time Set Packer(s) 7:00 A.M. = P.M. Time Started Off Bottom 9:00 A.M. = P.M. Maximum Temperature 84
 Initial Hydrostatic Pressure (A) 360 P.S.I.
 Initial Flow Period Minutes 30 (B) 42 P.S.I. to (C) 39 P.S.I.
 Initial Closed In Period Minutes 30 (D) 53 P.S.I.
 Final Flow Period Minutes 30 (E) 45 P.S.I. to (F) 42 P.S.I.
 Final Closed In Period Minutes 27 (G) 48 P.S.I.
 Final Hydrostatic Pressure (H) 353 P.S.I.

WESTERN TESTING CO., INC.

Pressure Data

Date 6/22/79 Test Ticket No. 2599
 Recorder No. 1564 Capacity 3150 Location 723 Ft.
 Clock No. -- Elevation 1179 Kelly Bushing Well Temperature 84 °F

Point	Pressure		Time Given	Time Computed
A Initial Hydrostatic Mud	360 P.S.I.	Open Tool	7:00A M	
B First Initial Flow Pressure	42 P.S.I.	First Flow Pressure	30 Mins.	30 Mins.
C First Final Flow Pressure	39 P.S.I.	Initial Closed-in Pressure	30 Mins.	30 Mins.
D Initial Closed-in Pressure	53 P.S.I.	Second Flow Pressure	30 Mins.	30 Mins.
E Second Initial Flow Pressure	45 P.S.I.	Final Closed-in Pressure	30 Mins.	27 Mins.
F Second Final Flow Pressure	42 P.S.I.			
G Final Closed-in Pressure	48 P.S.I.			
H Final Hydrostatic Mud	353 P.S.I.			

PRESSURE BREAKDOWN

First Flow Pressure
 Breakdown: 6 Inc.
 of 5 mins. and a
 final inc. of 0 Min.

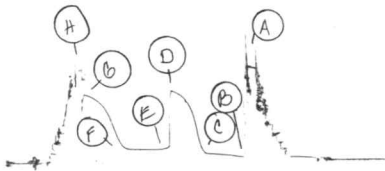
Initial Shut-In
 Breakdown: 10 Inc.
 of 3 mins. and a
 final inc. of 0 Min.

Second Flow Pressure
 Breakdown: 6 Inc.
 of 5 mins. and a
 final inc. of 0 Min.

Final Shut-In
 Breakdown: 9 Inc.
 of 3 mins. and a
 final inc. of 0 Min.

Point Mins.	Press.	Point Minutes	Press.	Point Minutes	Press.	Point Minutes	Press.
P 1 0	42	0	39	0	45	0	42
P 2 5	39	3	39	5	42	3	42
P 3 10	39	6	41	10	42	6	42
P 4 15	39	9	43	15	42	9	42
P 5 20	39	12	43	20	42	12	42
P 6 25	39	15	45	25	42	15	47
P 7 30	39	18	47	30	42	18	48
P 8		21	49			21	48
P 9		24	51			24	48
P10		27	52			27	48
P11		30	53				
P12							
P13							
P14							
P15							
P16							
P17							
P18							
P19							
P20							

JKK # 2600
I



Company Range Oil Company, Inc. Lease & Well No. Meadows "D"#2
 Elevation 1197 Kelly Bushing Formation Admire Effective Pay -- Ft. Ticket No. 2600
 Date 6/22/79 Sec. 21 Twp. 33S Range 4E County Cowley State Kansas
 Test Approved by Stephen M. Kreidler Western Representative Norman Allen

Formation Test No. 2 Interval Tested from 720 ft. to 755 ft. Total Depth 755 ft.
 Packer Depth 720 ft. Size 6 3/4 in. Packer Depth - ft. Size - in.
 Packer Depth 715 ft. Size 6 3/4 in. Packer Depth - ft. Size - in.
 Depth of Selective Zone Set --

Top Recorder Depth (Inside) 748 ft. Recorder Number 1564 Cap. 3150
 Bottom Recorder Depth (Outside) 751 ft. Recorder Number 1562 Cap. 3150
 Below Straddle Recorder Depth - ft. Recorder Number - Cap. -

Drilling Contractor Range Oil Company Drill Collar Length 250 I. D. 2 1/4 in.
 Mud Type chemical Viscosity 36 Weight Pipe Length - I. D. - in.
 Weight 9.4 Water Loss 14.8 cc. Drill Pipe Length 450 I. D. 3.8 in.
 Chlorides 1,000 P.P.M. Test Tool Length 55 ft. Tool Size 4 1/2 OD in.
 Jars: Make -- Serial Number -- Anchor Length 35 ft. Size 4 1/2 OD in.
 Did Well Flow? No Reversed Out No Surface Choke Size 3/4 in. Bottom Choke Size 3/4 in.
 Main Hole Size 7 7/8 in. Tool Joint Size 4 1/2 XH in.

Very weak 60 minutes.
 Blow: _____

Recovered 45 ft. of drilling mud
 Recovered _____ ft. of _____
 Recovered _____ ft. of _____
 Recovered _____ ft. of _____
 Recovered _____ ft. of _____

Remarks: _____

Time Set Packer(s) 3:30 ~~A.M.~~ P.M. Time Started Off Bottom 5:30 ~~A.M.~~ P.M. Maximum Temperature 84
 Initial Hydrostatic Pressure (A) 383 P.S.I.
 Initial Flow Period Minutes 30 (B) 17 P.S.I. to (C) 34 P.S.I.
 Initial Closed In Period Minutes 30 (D) 290 P.S.I.
 Final Flow Period Minutes 30 (E) 60 P.S.I. to (F) 56 P.S.I.
 Final Closed In Period Minutes 30 (G) 275 P.S.I.
 Final Hydrostatic Pressure (H) 375 P.S.I.

WESTERN TESTING CO., INC.

Pressure Data

Date 6/22/79 Recorder No. 1564 Capacity 3150 Test Ticket No. 2600
 Clock No. -- Elevation 1197 Kelly Bushing Location 748 Ft. 84
 Well Temperature °F

Point	Pressure		Time Given	Time Computed
A Initial Hydrostatic Mud	383	P.S.I.	3:30P	M
B First Initial Flow Pressure	17	P.S.I.	30	Mins.
C First Final Flow Pressure	34	P.S.I.	30	Mins.
D Initial Closed-in Pressure	290	P.S.I.	30	Mins.
E Second Initial Flow Pressure	60	P.S.I.	30	Mins.
F Second Final Flow Pressure	56	P.S.I.	30	Mins.
G Final Closed-in Pressure	275	P.S.I.		
H Final Hydrostatic Mud	375	P.S.I.		

PRESSURE BREAKDOWN

Point Mins.	First Flow Pressure		Initial Shut-In		Second Flow Pressure		Final Shut-In	
	Breakdown:	Inc.	Breakdown:	Inc.	Breakdown:	Inc.	Breakdown:	Inc.
	6		10		6		10	
	of 5	mins. and a	of 3	mins. and a	of 5	mins. and a	of 3	mins. and a
	final inc. of 0	Min.	final inc. of 0	Min.	final inc. of 0	Min.	final inc. of 0	Min.
	Point Minutes	Press.	Point Minutes	Press.	Point Minutes	Press.	Point Minutes	Press.
P 1	0	17	0	34	0	60	0	56
P 2	5	22	3	56	5	54	3	70
P 3	10	26	6	115	10	51	6	96
P 4	15	29	9	185	15	51	9	140
P 5	20	31	12	230	20	53	12	183
P 6	25	33	15	255	25	55	15	211
P 7	30	34	18	269	30	56	18	224
P 8			21	280			21	237
P 9			24	284			24	249
P 10			27	287			27	261
P 11			30	290			30	275
P 12								
P 13								
P 14								
P 15								
P 16								
P 17								
P 18								
P 19								
P 20								