

WESTERN TESTING CO. INC.
SUBSURFACE PRESSURE SURVEY

DATE: 10/16/83 TICKET #16719
 CUSTOMER: W. L. KIRKMAN INC. LEASE: "A" LOCKHART
 WELL: 1 TEST: 1 GEOLOGIST: BUSKIRK
 ELEVATION (KB): 0 FORMATION: SIMPSON
 SECTION: 36 TOWNSHIP: 33S
 RANGE: 1E COUNTY: SUMNER STATE: KANSAS
 GAUGE SN #13402 RANGE: 4025 CLOCK: 12

INTERVAL TEST FROM: 3908 FT TO: 3914 FT TOTAL DEPTH: 3914 FT
 DEPTH OF SELECTIVE ZONE: FT
 PACKER DEPTH: 3908 FT SIZE: 6 3/4 IN PACKER DEPTH: FT SIZE: IN
 PACKER DEPTH: FT SIZE: IN PACKER DEPTH: FT SIZE: IN

DRILLING CONTRACTOR: ALDEBARAN L-1
 MUD TYPE: CHEMICAL VISCOSITY: 39
 WEIGHT: 8.9 WATER LOSS (CC): 12.0
 CHLORIDES (P.P.M.): 1800
 JARS - MAKE: NO SERIAL NUMBER:
 DID WELL FLOW? NO REVERSED OUT? NO
 DRILL COLLAR LENGTH: 480 FT I.D.: 2.2 IN
 WEIGHT PIPE LENGTH: FT I.D.: IN
 DRILL PIPE LENGTH: 3408 FT I.D.: 3.2 IN
 TEST TOOL LENGTH: 20 FT TOOL SIZE: 5 1/2 O.D. IN
 ANCHOR LENGTH: 6 FT SIZE: 5 1/2 O.D. IN
 SURFACE CHOKE SIZE: 3/4 IN BOTTOM CHOKE SIZE: 3/4 IN
 MAIN HOLE SIZE: 7 7/8 IN TOOL JOINT SIZE: 4 1/2 F.H. IN

BLOW: VERY WEAK - DIED IN 10 MINUTES INITIAL FLOW.
 NO BLOW FINAL FLOW.

RECOVERED: 1 FT OF: MUD
 RECOVERED: FT OF:
 RECOVERED: FT OF:
 RECOVERED: FT OF:
 RECOVERED: FT OF:
 RECOVERED: FT OF:
 RECOVERED: FT OF:
 RECOVERED: FT OF:
 RECOVERED: FT OF:
 RECOVERED: FT OF:

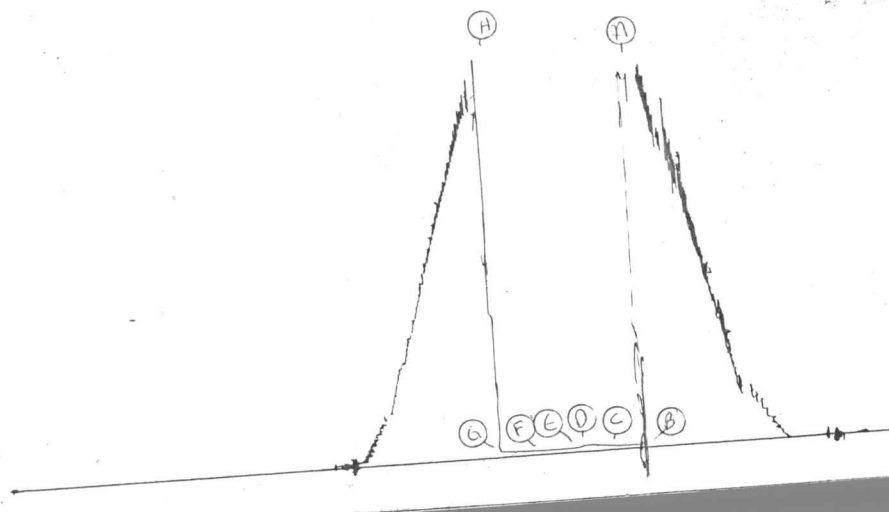
REMARKS:

TIME SET PACKER(S): 7:30 A.M. TIME STARTED OFF BOTTOM: 9:15 A.M.
 WELL TEMPERATURE: 115 °F
 INITIAL HYDROSTATIC PRESSURE: (A) 1881 PSI
 INITIAL FLOW PERIOD MIN: 15 (B) 18 PSI TO (C) 20 PSI
 INITIAL CLOSED IN PERIOD MIN: 30 (D) 34 PSI
 FINAL FLOW PERIOD MIN: 30 (E) 22 PSI TO (F) 22 PSI
 FINAL CLOSED IN PERIOD MIN: 30 (G) 30 PSI
 FINAL HYDROSTATIC PRESSURE (H) 1853 PSI

1340
DS7 41

TK# 10719

I



WESTERN TESTING CO. INC.
SUBSURFACE PRESSURE SURVEY

DATE: 10/16/83
CUSTOMER: W.L. KIRKMAN INC.
WELL: 1 TEST: 2
ELEVATION (KB): 0 FORMATION: SIMPSON
SECTION: 36 TOWNSHIP: 33S
RANGE: 1E COUNTY: SUMNER STATE: KANSAS
GAUGE SN #13402 RANGE: 4025 CLOCK: 12

TICKET #16720
LEASE: "A" LOCKHART
GEOLOGIST: ?

INTERVAL TEST FROM: 3906 FT TO: 3922 FT TOTAL DEPTH: 3922 FT
DEPTH OF SELECTIVE ZONE: FT
PACKER DEPTH: 3906 FT SIZE: 6 3/4 IN PACKER DEPTH: FT SIZE: IN
PACKER DEPTH: FT SIZE: IN PACKER DEPTH: FT SIZE: IN

DRILLING CONTRACTOR: ALDEBARAN DRLG.
MUD TYPE: CHEMICAL VISCOSITY: 87
WEIGHT: 9.0 WATER LOSS (CC): 10.4
CHLORIDES (P.P.M.): 3200

JARS - MAKE: SERIAL NUMBER:
DID WELL FLOW? NO REVERSED OUT? NO
DRILL COLLAR LENGTH: 480 FT I.D.: 2.2 IN
WEIGHT PIPE LENGTH: FT I.D.: IN
DRILL PIPE LENGTH: 3411 FT I.D.: 3.2 IN
TEST TOOL LENGTH: 15 FT TOOL SIZE: 5 1/2 OD IN
ANCHOR LENGTH: 16 FT SIZE: 5 1/2 OD IN
SURFACE CHOKE SIZE: 3/4 IN BOTTOM CHOKE SIZE: 3/4 IN
MAIN HOLE SIZE: 7 7/8 IN TOOL JOINT SIZE: 4 FH IN

BLOW: INITIAL FLOW PERIOD VERY WEAK BLOW.
FINAL FLOW PERIOD NO BLOW.

RECOVERED: 3 FT OF: MUD.
RECOVERED: FT OF:
RECOVERED: FT OF:
RECOVERED: FT OF:
RECOVERED: FT OF:
RECOVERED: FT OF:
RECOVERED: FT OF:
RECOVERED: FT OF:
RECOVERED: FT OF:
RECOVERED: FT OF:

REMARKS:

TIME SET PACKER(S): 11:25 PM
WELL TEMPERATURE: 115 °F

TIME STARTED OFF BOTTOM: 1:25 AM

INITIAL HYDROSTATIC PRESSURE: (A) 1873 PSI
INITIAL FLOW PERIOD MIN: 30 (B) 10 PSI TO (C) 10 PSI
INITIAL CLOSED IN PERIOD MIN: 27 (D) 28 PSI
FINAL FLOW PERIOD MIN: 30 (E) 22 PSI TO (F) 22 PSI
FINAL CLOSED IN PERIOD MIN: 33 (G) 30 PSI
FINAL HYDROSTATIC PRESSURE (H) 1840 PSI

13402
DST⁶²

TKT # 16720

I

