



WESTERN TESTING CO., INC.

FORMATION TESTING

TICKET

N<sup>o</sup> 5746

P. O. BOX 1599 WICHITA, KANSAS 67201

Elevation 1133 KB

Formation Miss

Eff. Pay - Ft.

District Augusta Date 11-2-84 Customer Order No. -

COMPANY NAME Camio Oil Company

ADDRESS 16046 East Harry St Wichita, Ks 67230

LEASE AND WELL NO. Totten #1 COUNTY Sumner STATE Ks Sec. 4 Twp 33 S Rge. 2 E

Mail Invoice To Same Co. Name No. Copies Requested 1

Mail Charts To Same #1 TOTTEN Address No. Copies Requested 5

Formation Test No. 1 Interval Tested From 3286 ft. to 3299 ft. Total Depth 3299 ft.

Packer Depth 3286 ft. Size 6 3/4 in. Packer Depth - ft. Size - in.

Packer Depth 3281 ft. Size 6 3/4 in. Packer Depth - ft. Size - in.

Depth of Selective Zone Set -

Top Recorder Depth (Inside) 3291 ft. Recorder Number 13266 Cap. 4200

Bottom Recorder Depth (Outside) 3294 ft. Recorder Number 13268 Cap. 4225

Below Straddle Recorder Depth - ft. Recorder Number - Cap. -

Drilling Contractor McAllister Drilling #9 Drill Collar Length 302 I. D. 2 1/4 in.

Mud Type Chem Viscosity 45 Weight Pipe Length - I. D. - in.

Weight 9.7 Water Loss 10.4 cc. Drill Pipe Length 2964 I. D. 3.8 in.

Chlorides 2600 P.P.M. Test Tool Length 20 ft. Tool Size 5 1/2 in.

Jars: Make - Serial Number - Anchor Length 13 ft. Size 5 1/2 in.

Did Well Flow? No Reversed Out No. Surface Choke Size 3/4 in. Bottom Choke Size 3/4 in.

Main Hole Size 7 1/8 in. Tool Joint Size 4 1/2 in.

Blow: Strong to fair at end of test

Recovered 1050 ft. of Saltwater

Recovered - ft. of

Recovered - ft. of

Recovered - ft. of

Recovered - ft. of

Chlorides 42,000 P.P.M. Sample Jars used 2 Remarks: Tight Hole

- Site hole - Hit 3 bridges going in hole w/ test tool

Time On Location 8:15 11-2 A.M. Time Pick Up Tool 10:10 A.M. Time Off Location Standby P.M.

Time Set Packer(s) 11:30 A.M. Time Started Off Bottom 1:15 P.M. Maximum Temperature 116

Initial Hydrostatic Pressure (A) - P.S.I.

Initial Flow Period Minutes 15 (B) 295 P.S.I. to (C) 415 P.S.I.

Initial Closed In Period Minutes 30 (D) 1235 P.S.I.

Final Flow Period Minutes 15 (E) 415 P.S.I. to (F) 510 P.S.I.

Final Closed In Period Minutes 45 (G) 1235 P.S.I.

Final Hydrostatic Pressure (H) - P.S.I.

COMPANY TERMS

Western Testing Co., Inc. shall not be liable for damages of any kind to the property or personnel of the one for whom a test is made or for any loss suffered or sustained directly or indirectly through the use of its equipment, of its statements or opinion concerning the results of any test. Tools lost or damaged in the hole shall be paid at cost by the party for whom the test is made.

All charges subject to 12% interest after 60 days from date of invoice. Any expense incurred for collection will be added to the original amount.

Test Approved By Joe Baker Signature of Customer or his authorized representative

Western Representative Norman Allen

FIELD INVOICE

Table with 2 columns: Item and Amount. Items include Open Hole Test (\$550), Misrun, Straddle Test, Jars, Selective Zone, Safety Joint, Standby, Evaluation, Extra Packer, Circ. Sub., Mileage, Fluid Sampler, Extra Charts, Insurance, Telecopier, and TOTAL.

WESTERN TESTING CO., INC.

Pressure Data

Date 11-2 Test Ticket No. 5746  
 Recorder No. 13266 Capacity \_\_\_\_\_ Location \_\_\_\_\_ Ft  
 Clock No. \_\_\_\_\_ Elevation \_\_\_\_\_ Well Temperature \_\_\_\_\_ °F

Point	Pressure	Time Given	Time Computed
A Initial Hydrostatic Mud	<u>1708</u> P.S.I.		
B First Initial Flow Pressure	<u>160</u> P.S.I.	<u>15</u> Mins.	<u>15</u> Mins.
C First Final Flow Pressure	<u>294</u> P.S.I.	<u>30</u> Mins.	<u>33</u> Mins.
D Initial Closed-in Pressure	<u>1238</u> P.S.I.	<u>15</u> Mins.	<u>20</u> Mins.
E Second Initial Flow Pressure	<u>400</u> P.S.I.	<u>45</u> Mins.	<u>45</u> Mins.
F Second Final Flow Pressure	<u>500</u> P.S.I.		
G Final Closed-in Pressure	<u>1238</u> P.S.I.		
H Final Hydrostatic Mud	<u>1663</u> P.S.I.		

*Tight Hole!*

PRESSURE BREAKDOWN

First Flow Pressure  
 Breakdown: 4 Inc.  
 of 5 mins. and a  
 final inc. of 0 Min.

Initial Shut-In  
 Breakdown: 12 Inc.  
 of 3 mins. and a  
 final inc. of 0 Min.

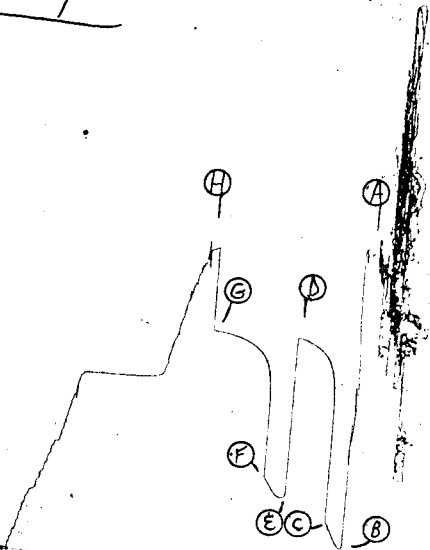
Second Flow Pressure  
 Breakdown: 5 Inc.  
 of 5 mins. and a  
 final inc. of 0 Min.

Final Shut-In  
 Breakdown: 16 Inc.  
 of 3 mins. and a  
 final inc. of 0 Min.

Point Mins.	Press.	Point Minutes	Press.	Point Minutes	Press.	Point Minutes	Press.
P 1 0	<u>160</u>	0	<u>294</u>	0	<u>400</u>	0	<u>500</u>
P 2 5	<u>179</u>	3	<u>991</u>	5	<u>400</u>	3	<u>1023</u>
P 3 10	<u>239</u>	6	<u>1100</u>	10	<u>433</u>	6	<u>1104</u>
P 4 15	<u>294</u>	9	<u>1144</u>	15	<u>483</u>	9	<u>1138</u>
P 5 20		12	<u>1172</u>	20	<u>500</u>	12	<u>1160</u>
P 6 25		15	<u>1191</u>	25		15	<u>1177</u>
P 7 30		18	<u>1203</u>	30		18	<u>1189</u>
P 8 35		21	<u>1213</u>	35		21	<u>1199</u>
P 9 40		24	<u>1222</u>	40		24	<u>1207</u>
P10 45		27	<u>1229</u>	45		27	<u>1215</u>
P11 50		30	<u>1235</u>	50		30	<u>1221</u>
P12 55		33	<u>1238</u>	55		33	<u>1225</u>
P13 60		36		60		36	<u>1229</u>
P14		39		65		39	<u>1232</u>
P15		42		70		42	<u>1235</u>
P16		45		75		45	<u>1238</u>
P17		48		80		48	
P18		51		85		51	
P19		54		90		54	
P20		57				57	
		60				60	

TKT # 5746

I



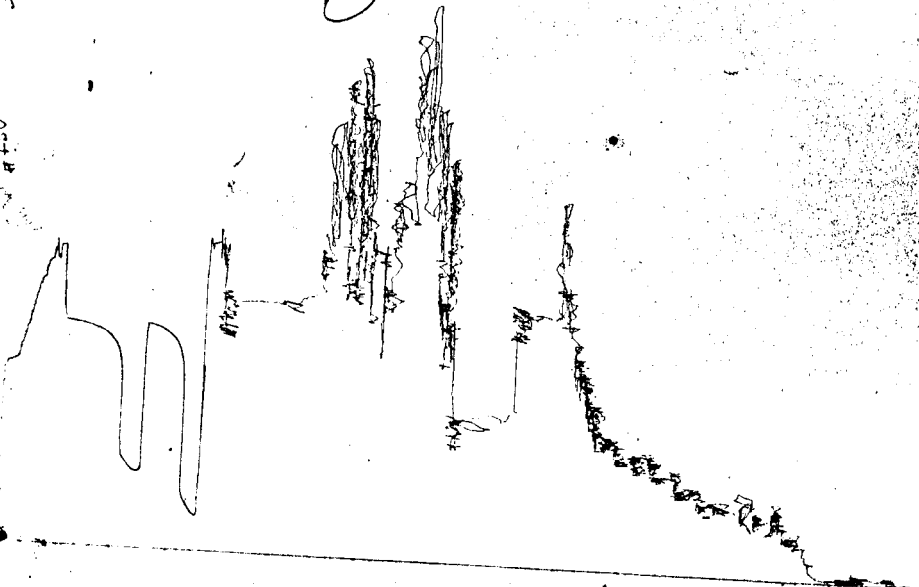
13266

POST #

5746

TKT # 5746

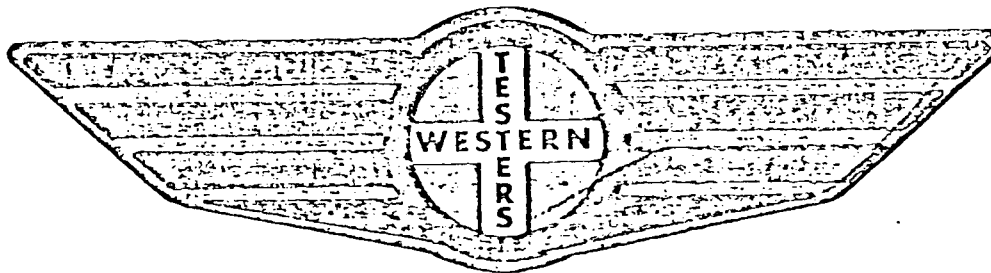
0



# FORMATION

# TEST

# REPORT



Home Office:

Wichita, Kansas 67201

P.O. Box 1599

Phone (316) 262-5861

Company CAMIO OIL COMPANY Lease and Well No. #1 TOTTEN Sec. 4 Twp. 33S Rge. 2E Test No. 1 Date 11/2/87

WESTERN TESTING COMPANY INC.  
SUBSURFACE PRESSURE SURVEY

DATE: 11/2/84  
CUSTOMER: CAMIO OIL COMPANY  
WELL: 1 TEST: 1  
ELEVATION (KB): 1133 FORMATION: MISSISSIPPIAN  
SECTION: 4 TOWNSHIP: 33S  
RANGE: 2E COUNTY: SUMNER STATE: KANSAS  
GAUGE SN #13266 RANGE: 4200 CLOCK: 12

TICKET #5746  
LEASE: TOTTON  
GEOLOGIST: BAKER

INTERVAL TEST FROM: 3286 FT TO: 3299 FT TOTAL DEPTH: 3299 FT  
DEPTH OF SELECTIVE ZONE: FT  
PACKER DEPTH: 3286 FT SIZE: 6 3/4 IN PACKER DEPTH: 3281 FT SIZE: 6 3/4 IN  
PACKER DEPTH: FT SIZE: IN PACKER DEPTH: FT SIZE: IN

DRILLING CONTRACTOR: MC ALLISTER DRLG  
MUD TYPE: CHEMICAL VISCOSITY: 45  
WEIGHT: 9.7 WATER LOSS (CC): 10.4  
CHLORIDES (P.P.M.): 2600

JARS - MAKE: SERIAL NUMBER:  
DID WELL FLOW? NO REVERSED OUT? NO  
DRILL COLLAR LENGTH: 302 FT I.D.: 2 1/4 IN  
WEIGHT PIPE LENGTH: FT I.D.: IN  
DRILL PIPE LENGTH: 2964 FT I.D.: 3.8 IN  
TEST TOOL LENGTH: 20 FT TOOL SIZE: 5 1/2 OD IN  
ANCHOR LENGTH: 13 FT SIZE: 5 1/2 OD IN  
SURFACE CHOKE SIZE: 3/4 IN BOTTOM CHOKE SIZE: 3/4 IN  
MAIN HOLE SIZE: 7 7/8 IN TOOL JOINT SIZE: 4 1/2 XH IN

BLOW: STRONG TO FAIR BLOW AT END OF TEST

RECOVERED: 1050 FT OF: SALTWATER  
RECOVERED: FT OF:  
RECOVERED: FT OF:  
RECOVERED: FT OF:  
RECOVERED: FT OF:  
RECOVERED: FT OF:  
RECOVERED: FT OF:  
RECOVERED: FT OF:  
RECOVERED: FT OF:

REMARKS: CHLORIDES 42000 P.P.M.  
TIGHT HOLE

HIT 3 BRIDGES GOING IN HOLE WITH TEST TOOL

TIME SET PACKER(S): 11:30 AM TIME STARTED OFF BOTTOM: 1:15 PM  
WELL TEMPERATURE: 116 °F  
INITIAL HYDROSTATIC PRESSURE: (A) 1708 PSI  
INITIAL FLOW PERIOD MIN: 15 (B) 160 PSI TO (C) 294 PSI  
INITIAL CLOSED IN PERIOD MIN: 33 (D) 1238 PSI  
FINAL FLOW PERIOD MIN: 20 (E) 400 PSI TO (F) 500 PSI  
FINAL CLOSED IN PERIOD MIN: 45 (G) 1238 PSI  
FINAL HYDROSTATIC PRESSURE (H) 1663 PSI





WESTERN TESTING CO., INC.
FORMATION TESTING

TICKET

No. 5747

P. O. BOX 1599 WICHITA, KANSAS 67201

Elevation 1133 RB Formation Mus Eff. Pay Ft.

District Augusta Date 11-2-84 Customer Order No.

COMPANY NAME Camio Oil Company

ADDRESS 16046 East Harry St Wichita, Ks 67230

LEASE AND WELL NO Totten #1 COUNTY Sumner STATE Ks Sec 4 Twp 33s Rge 2E

Mail Invoice To Same No. Copies Requested 1

Mail Charts To Same #7 TOTTEM Address No. Copies Requested 5

Formation Test No. 2 Interval Tested From 3316 ft. to 3325 ft. Total Depth 3325 ft.

Packer Depth 3316 ft. Size 6 3/4 in. Packer Depth ft. Size in.

Packer Depth 3111 ft. Size 6 3/4 in. Packer Depth ft. Size in.

Depth of Selective Zone Set

Top Recorder Depth (Inside) 3317 ft. Recorder Number 13266 Cap. 4200

Bottom Recorder Depth (Outside) 3320 ft. Recorder Number 13268 Cap. 4225

Below Scradle Recorder Depth ft. Recorder Number Cap.

Drilling Contractor McAllister Drilling Co #9 Drill Collar Length 302 I. D. 2 1/4 in.

Mud Type Chem Viscosity 45 Weight Pipe Length I. D. in.

Weight 9.7 Water Loss 10.4 cc. Drill Pipe Length 2994 I. D. 3.8 in.

Chlorides 2600 P.P.M. Test Tool Length 20 ft. Tool Size 5 1/2 00 in.

Jars: Make Serial Number Anchor Length 9 ft. Size 5 3/4 in.

Did Well Flow? No Reversed Out No. Surface Choke Size 3/4 in. Bottom Choke Size 3/4 in.

Main Hole Size 7 1/8 in. Tool Joint Size 4 1/2 x 11 in.

Blow: Break thruout test

Recovered 60 ft. of Slightly oil cut mud 5.2% solids 9.5% mud

Recovered ft. of

Recovered ft. of

Recovered ft. of

Recovered ft. of

Chlorides 3300 P.P.M. Sample Jars used 2 Remarks:

Net bridge going in hole w/ test tool

Time On Location 8:15 11-2 A.M. Time Pick Up Tool 10:00 11-2 P.M. Time Off Location Standby A.M. P.M.

Time Set Packer(s) 11:15 P.M. Time Started Off Bottom 2:15 A.M. Maximum Temperature 116

Initial Hydrostatic Pressure (A) 1680 P.S.I.

Initial Flow Period Minutes 30 (B) 10 P.S.I. to (C) 10 P.S.I.

Initial Closed In Period Minutes 30 (D) 985 P.S.I.

Final Flow Period Minutes 60 (E) 60 P.S.I. to (F) 50 P.S.I.

Final Closed In Period Minutes 60 (G) 940 P.S.I.

Final Hydrostatic Pressure (H) 1686 P.S.I.

COMPANY TERMS

Western Testing Co., Inc. shall not be liable for damages of any kind to the property or personnel of the one for whom a test is made or for any loss suffered or sustained directly or indirectly through the use of its equipment, of its statements or opinion concerning the results of any test. Tools lost or damaged in the hole shall be paid at cost by the party for whom the test is made.

All charges subject to 12% interest after 60 days from date of invoice. Any expense incurred for collection will be added to the original amount.

Test Approved By Signature of Customer or his authorized representative

Western Representative Norman Allen 0150

FIELD INVOICE

Table with 2 columns: Item and Price. Items include Open Hole Test (\$550), Misrun, Straddle Test, Jars, Selective Zone, Safety Joint, Standby, Evaluation, Extra Packer, Circ. Sub., Mileage, Fluid Sampler, Extra Charts, Insurance, Telecopier, and TOTAL.

**WESTERN TESTING CO., INC.**  
**Pressure Data**

Date: 11-2  
Recorder No. 13266  
Clock No. ---

Test Ticket No. 5747  
Capacity \_\_\_\_\_ Location \_\_\_\_\_ Ft  
Elevation \_\_\_\_\_ Well Temperature \_\_\_\_\_ °F

Point	Pressure	
A Initial Hydrostatic Mud	<u>1670</u>	P.S.I.
B First Initial Flow Pressure	<u>7</u>	P.S.I.
C First Final Flow Pressure	<u>8</u>	P.S.I.
D Initial Closed-in Pressure	<u>991</u>	P.S.I.
E Second Initial Flow Pressure	<u>36</u>	P.S.I.
F Second Final Flow Pressure	<u>36</u>	P.S.I.
G Final Closed-in Pressure	<u>928</u>	P.S.I.
H Final Hydrostatic Mud	<u>1670</u>	P.S.I.

	Time Given	Time Computed
Open Tool		M
First Flow Pressure	<u>30</u> Mins.	<u>30</u> Mins.
Initial Closed-in Pressure	<u>30</u> Mins.	<u>36</u> Mins.
Second Flow Pressure	<u>60</u> Mins.	<u>60</u> Mins.
Final Closed-in Pressure	<u>60</u> Mins.	<u>66</u> Mins.

*Tight Hole!*

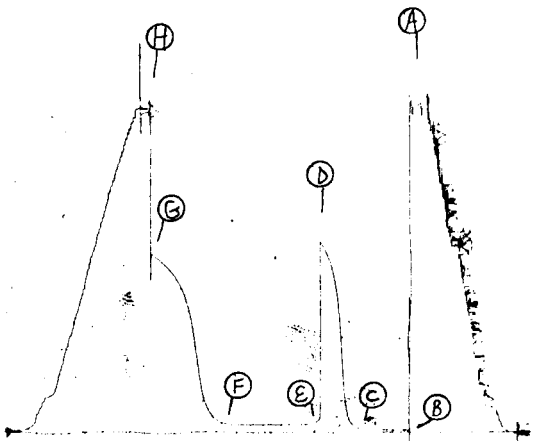
**PRESSURE BREAKDOWN**

First Flow Pressure	Initial Shut-In	Second Flow Pressure	Final Shut-In
Breakdown: <u>7</u> Inc.	Breakdown: <u>13</u> Inc.	Breakdown: <u>13</u> Inc.	Breakdown: <u>23</u> Inc.
of <u>5</u> mins. and a	of <u>3</u> mins. and a	of <u>5</u> mins. and a	of <u>3</u> mins. and a
final inc. of <u>0</u> Min.	final inc. of <u>0</u> Min.	final inc. of <u>0</u> Min.	final inc. of <u>0</u> Min.

Point Mins.	Press.	Point Minutes	Press.	Point Minutes	Press.	Point Minutes	Press.
P 1 0	<u>7</u>	0	<u>8</u>	0	<u>36</u>	0	<u>36</u>
P 2 5	<u>5</u>	3	<u>9</u>	5		3	<u>36</u>
P 3 10	<u>5</u>	6	<u>12</u>	10		6	<u>37</u>
P 4 15	<u>7</u>	9	<u>20</u>	15		9	<u>41</u>
P 5 20	<u>8</u>	12	<u>38</u>	20		12	<u>46</u>
P 6 25	<u>8</u>	15	<u>87</u>	25		15	<u>57</u>
P 7 30	<u>8</u>	18	<u>225</u>	30		18	<u>73</u>
P 8 35		21	<u>429</u>	35		21	<u>99</u>
P 9 40		24	<u>653</u>	40		24	<u>139</u>
P10 45		27	<u>819</u>	45		27	<u>194</u>
P11 50		30	<u>905</u>	50		30	<u>304</u>
P12 55		33	<u>954</u>	55		33	<u>441</u>
P13 60		36	<u>991</u>	60		36	<u>571</u>
P14		<del>39</del>		<del>65</del>			39
P15		42		70		42	<u>741</u>
P16		45		75		45	<u>787</u>
P17		48		80		48	<u>821</u>
P18		51		85		51	<u>846</u>
P19		54		90		54	<u>869</u>
P20		57				57	<u>888</u>
		60				60	<u>905</u>
						63	<u>921</u>

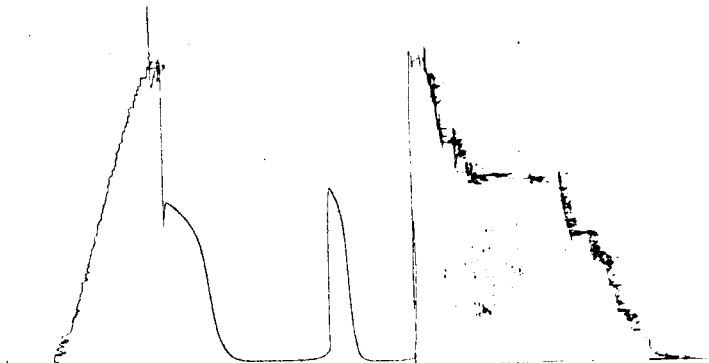
TKT # 5747

I



TKT # 5747

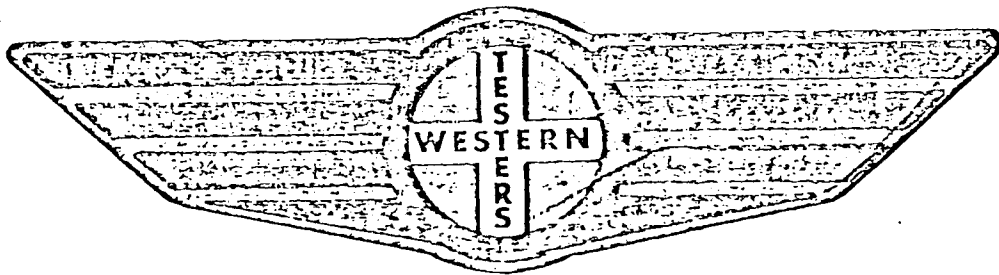
0



# FORMATION

# TEST

# REPORT



Home Office:

Wichita, Kansas 67201

P.O. Box 1599

Phone (316) 262-5861

Company CAMIO OIL COMPANY

Lease and Well No.

#1 TOTTEN

Sec. 4

Twp.

33S Rge.

2E

Test No. 2

Date 11/2/84

WESTERN TESTING COMPANY INC.  
SUBSURFACE PRESSURE SURVEY

DATE: 11/2/84  
 CUSTOMER: CAMIO OIL COMPANY  
 WELL: 1 TEST: 2  
 ELEVATION (KB): 1133 FORMATION: MISSISSIPPIAN  
 SECTION: 4 TOWNSHIP: 33S  
 RANGE: 2E COUNTY: SUMNER STATE: KANSAS  
 GAUGE SN #13266 RANGE: 4200 CLOCK: 12

INTERVAL TEST FROM: 3316 FT TO: 3325 FT TOTAL DEPTH: 3325 FT  
 DEPTH OF SELECTIVE ZONE: FT  
 PACKER DEPTH: 3316 FT SIZE: 6 3/4 IN PACKER DEPTH: 3111 FT SIZE: 6 3/4 IN  
 PACKER DEPTH: FT SIZE: IN PACKER DEPTH: FT SIZE: IN

DRILLING CONTRACTOR: MC ALLISTER DRLG CO  
 MUD TYPE: CHEMICAL VISCOSITY: 45  
 WEIGHT: 9.7 WATER LOSS (CC): 10.4  
 CHLORIDES (P.P.M.): 2600  
 JARS - MAKE: SERIAL NUMBER:  
 DID WELL FLOW? NO REVERSED OUT? NO  
 DRILL COLLAR LENGTH: 302 FT I.D.: 2 1/4 IN  
 WEIGHT PIPE LENGTH: FT I.D.: IN  
 DRILL PIPE LENGTH: 2994 FT I.D.: 3.8 IN  
 TEST TOOL LENGTH: 20 FT TOOL SIZE: 5 1/2 OD IN  
 ANCHOR LENGTH: 9 FT SIZE: 5 1/2 OD IN  
 SURFACE CHOKE SIZE: 3/4 IN BOTTOM CHOKE SIZE: 3/4 IN  
 MAIN HOLE SIZE: 7 7/8 IN TOOL JOINT SIZE: 4 1/2 XH IN

BLOW: WEAK BLOW FOR BOTH FLOW PERIODS

RECOVERED: 60 FT OF: SLIGHTLY OIL CUT MUD (5% OIL; 95% MUD)  
 RECOVERED: FT OF:  
 RECOVERED: FT OF:  
 RECOVERED: FT OF:  
 RECOVERED: FT OF:  
 RECOVERED: FT OF:  
 RECOVERED: FT OF:  
 RECOVERED: FT OF:  
 RECOVERED: FT OF:  
 RECOVERED: FT OF:

REMARKS: TIGHT HOLE  
 HIT BRIDGE GOING IN HOLE WITH TEST TOOL

TIME SET PACKER(S): 11:15 PM TIME STARTED OFF BOTTOM: 2:15 AM  
 WELL TEMPERATURE: 116 °F  
 INITIAL HYDROSTATIC PRESSURE: (A) 1670 PSI  
 INITIAL FLOW PERIOD MIN: 30 (B) 7 PSI TO (C) 8 PSI  
 INITIAL CLOSED IN PERIOD MIN: 36 (D) 991 PSI  
 FINAL FLOW PERIOD MIN: 60 (E) 36 PSI TO (F) 36 PSI  
 FINAL CLOSED IN PERIOD MIN: 66 (G) 928 PSI  
 FINAL HYDROSTATIC PRESSURE (H) 1670 PSI





WESTERN TESTING CO., INC.
FORMATION TESTING

TICKET No. 5748

P. O. BOX 1599 WICHITA, KANSAS 67201
PHONE (316) 262-5861

Elevation 1133 KB Formation Miss Eff. Pay Ft.

District Augusta Date 11-3-84 Customer Order No.

COMPANY NAME Camio Oil Co. Inc.

ADDRESS 16046 East Harry St Wichita, Ks 67230

LEASE AND WELL NO. Totten #1 COUNTY Sumner STATE Ks Sec. 4 Twp 33S Rge. 2E

Mail Invoice To Same No. Copies Requested 1

Mail Charts To Same #1 TOTTEN Address No. Copies Requested 5

Formation Test No. 3 Interval Tested From 3325 ft. to 3339 ft. Total Depth 3339 ft.

Packer Depth 3325 ft. Size 6 3/4 in. Packer Depth - ft. Size - in.

Packer Depth 3320 ft. Size 6 3/4 in. Packer Depth - ft. Size - in.

Depth of Selective Zone Set

Top Recorder Depth (Inside) 3331 ft. Recorder Number 13266 Cap. 4200

Bottom Recorder Depth (Outside) 3334 ft. Recorder Number 13268 Cap. 4205

Below Scaddle Recorder Depth ft. Recorder Number Cap.

Drilling Contractor M. Allister Drilling Co. #9 Drill Collar Length 302 I. D. 2 1/4 in.

Mud Type Chem Viscosity 52 Weight 9.6 Water Loss 10.8 cc. Drill Pipe Length 3003 I. D. 3.8 in.

Chlorides 5600 P.P.M. Test Tool Length 20 ft. Tool Size 5 3/8 in.

Jars: Make Serial Number Anchor Length 14 ft. Size 5 3/8 in.

Did Well Flow? No Reversed Out No Surface Choke Size 3/4 in. Bottom Choke Size 3/4 in.

Main Hole Size 7 7/8 in. Tool Joint Size 4 1/2 X H in.

Blow: Fair thruout test

Recovered 570 ft. of Salt water .26 lbs @ 64°F

Recovered ft. of

Recovered ft. of

Recovered ft. of

Recovered ft. of

Chlorides 40,000 P.P.M. Sample Jars used 3 Remarks: Hit several bridges going in hole w/ test tool

Damaged both packer rubbers & Recorder #13268

Time On Location 8:15 11-2 A.M. Time Pick Up Tool 10:45 11-3 A.M. Time Off Location Standby A.M.

Time Set Packer(s) 12:01 P.M. Time Started Off Bottom 2:31 P.M. Maximum Temperature 118

Initial Hydrostatic Pressure (A) 1680 P.S.I.

Initial Flow Period Minutes 30 (B) 60 P.S.I. to (C) 170 P.S.I.

Initial Closed In Period Minutes 30 (D) 1195 P.S.I.

Final Flow Period Minutes 30 (E) 255 P.S.I. to (F) 275 P.S.I.

Final Closed In Period Minutes 60 (G) 1215 P.S.I.

Final Hydrostatic Pressure (H) 1635 P.S.I.

COMPANY TERMS

Western Testing Co., Inc. shall not be liable for damages of any kind to the property or personnel of the one for whom a test is made or for any loss suffered or sustained directly or indirectly through the use of its equipment, of its statements or opinion concerning the results of any test. Tools lost or damaged in the hole shall be paid at cost by the party for whom the test is made.

All charges subject to 12% interest after 60 days from date of invoice. Any expense incurred for collection will be added to the original amount.

Test Approved By [Signature] Signature of Customer or his authorized representative

Western Representative Norman Allen DISO

FIELD INVOICE

Table with 2 columns: Item and Price. Items include Open Hole Test (\$550), Misrun, Straddle Test, Jars, Selective Zone, Safety Joint, Standby, Evaluation, Extra Packer, Circ. Sub., Mileage, Fluid Sampler, Extra Charts, Insurance, Telecopier, and TOTAL.

WESTERN TESTING CO., INC.

Pressure Data

Date 11-3

Test Ticket No. 5748

Recorder No. 13266

Capacity \_\_\_\_\_ Location \_\_\_\_\_ Ft.

Clock No. \_\_\_\_\_ Elevation \_\_\_\_\_ Well Temperature \_\_\_\_\_ °F

Point	Pressure	P.S.I.
A Initial Hydrostatic Mud	<u>1743</u>	P.S.I.
B First Initial Flow Pressure	<u>53</u>	P.S.I.
C First Final Flow Pressure	<u>174</u>	P.S.I.
D Initial Closed-in Pressure	<u>1193</u>	P.S.I.
E Second Initial Flow Pressure	<u>230</u>	P.S.I.
F Second Final Flow Pressure	<u>262</u>	P.S.I.
G Final Closed-in Pressure	<u>1227</u>	P.S.I.
H Final Hydrostatic Mud	<u>1647</u>	P.S.I.

Open Tool	Time Given	M	Time Computed	M
First Flow Pressure	<u>30</u>	Mins.	<u>30</u>	Mins.
Initial Closed-in Pressure	<u>30</u>	Mins.	<u>30</u>	Mins.
Second Flow Pressure	<u>30</u>	Mins.	<u>30</u>	Mins.
Final Closed-in Pressure	<u>60</u>	Mins.	<u>60</u>	Mins.

Tight Hole!

PRESSURE BREAKDOWN

First Flow Pressure  
Breakdown: 7 Inc.  
of 5 mins. and a  
final inc. of 0 Min.

Initial Shut-In  
Breakdown: 11 Inc.  
of 3 mins. and a  
final inc. of 0 Min.

Second Flow Pressure  
Breakdown: 7 Inc.  
of 5 mins. and a  
final inc. of 0 Min.

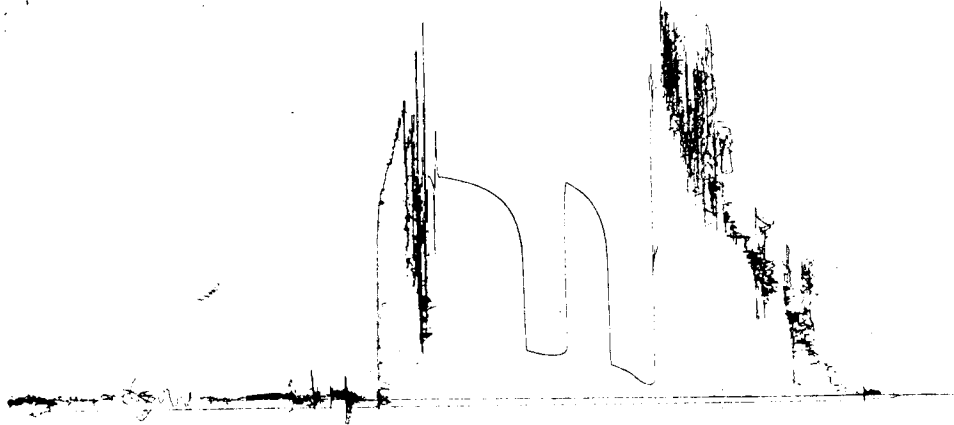
Final Shut-In  
Breakdown: 21 Inc.  
of 3 mins. and a  
final inc. of 0 Min.

Point Mins.	Press.	Point Minutes	Press.	Point Minutes	Press.	Point Minutes	Press.
P 1 0	<u>53</u>	0	<u>174</u>	0	<u>230</u>	0	<u>262</u>
P 2 5	<u>53</u>	3	<u>910</u>	5	<u>230</u>	3	<u>903</u>
P 3 10	<u>74</u>	6	<u>986</u>	10	<u>230</u>	6	<u>978</u>
P 4 15	<u>110</u>	9	<u>1042</u>	15	<u>236</u>	9	<u>1026</u>
P 5 20	<u>138</u>	12	<u>1084</u>	20	<u>245</u>	12	<u>1059</u>
P 6 25	<u>159</u>	15	<u>1109</u>	25	<u>255</u>	15	<u>1085</u>
P 7 30	<u>174</u>	18	<u>1131</u>	30	<u>262</u>	18	<u>1109</u>
P 8 35		21	<u>1148</u>	35		21	<u>1127</u>
P 9 40		24	<u>1164</u>	40		24	<u>1144</u>
P 10 45		27	<u>1180</u>	45		27	<u>1157</u>
P 11 50		30	<u>1193</u>	50		30	<u>1168</u>
P 12 55		33		55		33	<u>1178</u>
P 13 60		36		60		36	<u>1187</u>
P 14		39		65		39	<u>1194</u>
P 15		42		70		42	<u>1200</u>
P 16		45		75		45	<u>1206</u>
P 17		48		80		48	<u>1211</u>
P 18		51		85		51	<u>1215</u>
P 19		54		90		54	<u>1219</u>
P 20		57				57	<u>1223</u>
		60				60	<u>1227</u>

TCK''

5478

0



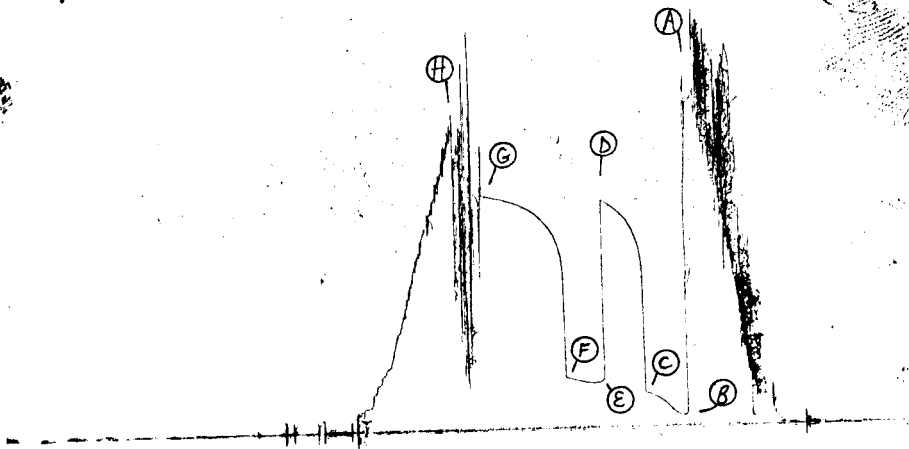
13268

05743

5478

TKT # 5748

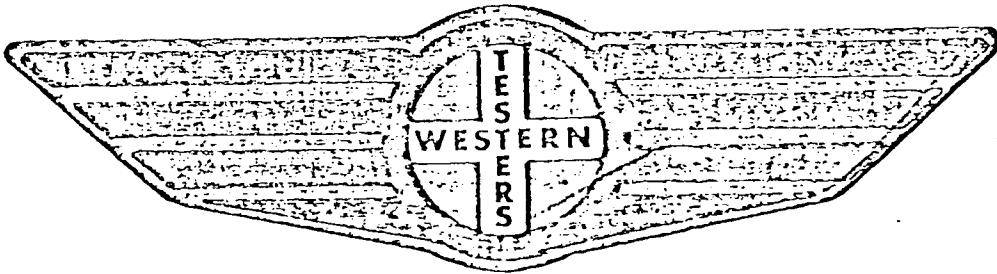
I



# FORMATION

# TEST

# REPORT



Home Office:

Wichita, Kansas 67201

P.O. Box 1599

Phone (316) 262-5861

mpany CAMIO OIL COMPANY

Lease and Well No.

#1 TOTTEN

Sec. 4

Twp. 33S Rge.

2E

Test No. 3

Date 11/3/87

WESTERN TESTING COMPANY INC.  
SUBSURFACE PRESSURE SURVEY

DATE: 11/3/84  
CUSTOMER: CAMIO OIL COMPANY  
WELL: 1 TEST: 3  
ELEVATION (KB): 1133 FORMATION: MISSISSIPPI  
SECTION: 4 TOWNSHIP: 33S  
RANGE: 2E COUNTY: SUMNER STATE: KANSAS  
GAUGE SN #13266 RANGE: 4200 CLOCK: 12

TICKET #5748  
LEASE: TOTTEN  
GEOLOGIST: BAKER

INTERVAL TEST FROM: 3325 FT TO: 3339 FT TOTAL DEPTH: 3339 FT  
DEPTH OF SELECTIVE ZONE: FT  
PACKER DEPTH: 3325 FT SIZE: 6 3/4 IN PACKER DEPTH: 3320 FT SIZE: 6 3/4 IN  
PACKER DEPTH: FT SIZE: IN PACKER DEPTH: FT SIZE: IN

DRILLING CONTRACTOR: MC ALLISTER DRLG CO  
MUD TYPE: CHEMICAL VISCOSITY: 52  
WEIGHT: 9.6 WATER LOSS (CC): 10.8  
CHLORIDES (P.P.M.): 5600  
JARS - MAKE: SERIAL NUMBER:  
DID WELL FLOW? NO REVERSED OUT? NO  
DRILL COLLAR LENGTH: 302 FT I.D.: 2 1/4 IN  
WEIGHT PIPE LENGTH: FT I.D.: IN  
DRILL PIPE LENGTH: 3003 FT I.D.: 3.8 IN  
TEST TOOL LENGTH: 20 FT TOOL SIZE: 5 1/2 OD IN  
ANCHOR LENGTH: 14 FT SIZE: 5 1/2 OD IN  
SURFACE CHOKE SIZE: 3/4 IN BOTTOM CHOKE SIZE: 3/4 IN  
MAIN HOLE SIZE: 7 7/8 IN TOOL JOINT SIZE: 4 1/2 XH IN

BLOW: FAIR BLOW FOR BOTH FLOW PERIODS

RECOVERED: 570 FT OF: SALTWATER .26 RES @ 64 OF  
RECOVERED: FT OF:  
RECOVERED: FT OF:  
RECOVERED: FT OF:  
RECOVERED: FT OF:  
RECOVERED: FT OF:  
RECOVERED: FT OF:  
RECOVERED: FT OF:  
RECOVERED: FT OF:  
RECOVERED: FT OF:

REMARKS: CHLORIDES 40000 P.P.M.  
HIT SEVERAL BRIDGES GOING IN HOLE WITH TEST TOOL  
DAMAGED BOTH PACKER RUBBERS & RECORDER #13268

TIME SET PACKER(S): 12:01 PM TIME STARTED OFF BOTTOM: 2:31 PM  
WELL TEMPERATURE: 118 °F  
INITIAL HYDROSTATIC PRESSURE: (A) 1743 PSI  
INITIAL FLOW PERIOD MIN: 30 (B) 53 PSI TO (C) 174 PSI  
INITIAL CLOSED IN PERIOD MIN: 30 (D) 1193 PSI  
FINAL FLOW PERIOD MIN: 30 (E) 230 PSI TO (F) 262 PSI  
FINAL CLOSED IN PERIOD MIN: 60 (G) 1227 PSI  
FINAL HYDROSTATIC PRESSURE (H) 1647 PSI

