

Company Range Oil Company, Inc. Lease & Well No. Godfrey #1
 Elevation 1171 Kelly Bushing Formation Layton Sand Effective Pay - Ft. Ticket No. 10012
 Date 5/15/82 Sec. 3 Twp. 34S Range 3E County Cowley State Kansas
 Test Approved by Grey D Bolte Western Representative Norman Allen

Formation Test No. 1 Interval Tested from 2638 ft. to 2651 ft. Total Depth 2651 ft.
 Packer Depth 2638 ft. Size 6 3/4 in. Packer Depth - ft. Size - in.
 Packer Depth 2633 ft. Size 6 3/4 in. Packer Depth - ft. Size - in.
 Depth of Selective Zone Set -

Top Recorder Depth (Inside) 2645 ft. Recorder Number 1559 Cap. 4200
 Bottom Recorder Depth (Outside) 2648 ft. Recorder Number 2608 Cap. 4175
 Below Straddle Recorder Depth - ft. Recorder Number -- Cap. -

Drilling Contractor Range Drilling Co Rig #2 Drill Collar Length 150 I. D. 2 1/4 in.
 Mud Type Chemical Viscosity 37 Weight Pipe Length - I. D. - in.
 Weight 9.6 Water Loss 12.0 cc. Drill Pipe Length 2468 I. D. 3.8 in.
 Chlorides 1900 P.P.M. Test Tool Length 20 ft. Tool Size 5 1/2 OD in.
 Jars: Make - Serial Number - Anchor Length 13 ft. Size 5 1/2 OD in.
 Did Well Flow? No Reversed Out No Surface Choke Size 3/4 in. Bottom Choke Size 3/4 in.
 Main Hole Size 7 7/8 in. Tool Joint Size 4 1/2 XH in.

Blow: Very blow for 5 minutes.

Recovered _____ ft. of _____
 Recovered _____ ft. of _____
 Recovered _____ ft. of _____
 Recovered _____ ft. of _____
 Recovered _____ ft. of _____

Remarks: NO FLUID RECOVERY

Time Set Packer(s) 2:15 ~~A.M.~~ P.M. Time Started Off Bottom 4:15 ~~A.M.~~ P.M. Maximum Temperature 104
 Initial Hydrostatic Pressure (A) 1320 P.S.I.
 Initial Flow Period Minutes 30 (B) 19 P.S.I. to (C) 19 P.S.I.
 Initial Closed In Period Minutes 30 (D) 21 P.S.I.
 Final Flow Period Minutes 30 (E) 21 P.S.I. to (F) 22 P.S.I.
 Final Closed In Period Minutes 27 (G) 22 P.S.I.
 Final Hydrostatic Pressure (H) 1282 P.S.I.

WESTERN TESTING CO., INC.
Pressure Data

Date 5/15/82

Test Ticket No. 10012

Recorder No. 1559 Capacity 4200 Location 2645 Ft.

Clock No. - Elevation 1171 Kelly Bushing Well Temperature 104 °F

Point	Pressure		Time Given	Time Computed
A Initial Hydrostatic Mud	<u>1320</u> P.S.I.	Open Tool	<u>2:15P</u> M	
B First Initial Flow Pressure	<u>19</u> P.S.I.	First Flow Pressure	<u>30</u> Mins.	<u>30</u> Mins.
C First Final Flow Pressure	<u>19</u> P.S.I.	Initial Closed-in Pressure	<u>30</u> Mins.	<u>30</u> Mins.
D Initial Closed-in Pressure	<u>21</u> P.S.I.	Second Flow Pressure	<u>30</u> Mins.	<u>30</u> Mins.
E Second Initial Flow Pressure	<u>21</u> P.S.I.	Final Closed-in Pressure	<u>30</u> Mins.	<u>27</u> Mins.
F Second Final Flow Pressure	<u>22</u> P.S.I.			
G Final Closed-in Pressure	<u>22</u> P.S.I.			
H Final Hydrostatic Mud	<u>1282</u> P.S.I.			

PRESSURE BREAKDOWN

First Flow Pressure
Breakdown: 6 Inc.
of 5 mins. and a
final inc. of 0 Min.

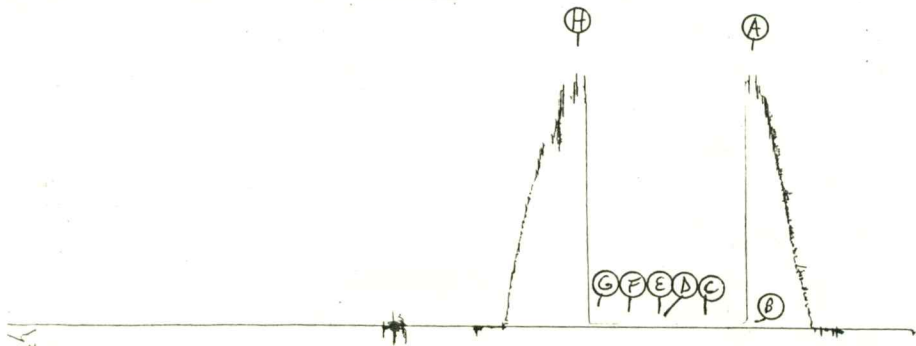
Initial Shut-In
Breakdown: 10 Inc.
of 3 mins. and a
final inc. of 0 Min.

Second Flow Pressure
Breakdown: 6 Inc.
of 5 mins. and a
final inc. of 0 Min.

Final Shut-In
Breakdown: 9 Inc.
of 3 mins. and a
final inc. of 0 Min.

Point Mins.	Press.	Point Minutes	Press.	Point Minutes	Press.	Point Minutes	Press.
P 1 <u>0</u>	<u>19</u>	<u>0</u>	<u>19</u>	<u>0</u>	<u>21</u>	<u>0</u>	<u>22</u>
P 2 <u>5</u>	<u>19</u>	<u>3</u>	<u>19</u>	<u>5</u>	<u>21</u>	<u>3</u>	<u>22</u>
P 3 <u>10</u>	<u>19</u>	<u>6</u>	<u>20</u>	<u>10</u>	<u>21</u>	<u>6</u>	<u>22</u>
P 4 <u>15</u>	<u>19</u>	<u>9</u>	<u>20</u>	<u>15</u>	<u>21</u>	<u>9</u>	<u>22</u>
P 5 <u>20</u>	<u>19</u>	<u>12</u>	<u>21</u>	<u>20</u>	<u>22</u>	<u>12</u>	<u>22</u>
P 6 <u>25</u>	<u>19</u>	<u>15</u>	<u>21</u>	<u>25</u>	<u>22</u>	<u>15</u>	<u>22</u>
P 7 <u>30</u>	<u>19</u>	<u>18</u>	<u>21</u>	<u>30</u>	<u>22</u>	<u>18</u>	<u>22</u>
P 8 _____	_____	<u>21</u>	<u>21</u>	_____	_____	<u>21</u>	<u>22</u>
P 9 _____	_____	<u>24</u>	<u>21</u>	_____	_____	<u>24</u>	<u>22</u>
P10 _____	_____	<u>27</u>	<u>21</u>	_____	_____	<u>27</u>	<u>22</u>
P11 _____	_____	<u>30</u>	<u>21</u>	_____	_____	_____	_____
P12 _____	_____	_____	_____	_____	_____	_____	_____
P13 _____	_____	_____	_____	_____	_____	_____	_____
P14 _____	_____	_____	_____	_____	_____	_____	_____
P15 _____	_____	_____	_____	_____	_____	_____	_____
P16 _____	_____	_____	_____	_____	_____	_____	_____
P17 _____	_____	_____	_____	_____	_____	_____	_____
P18 _____	_____	_____	_____	_____	_____	_____	_____
P19 _____	_____	_____	_____	_____	_____	_____	_____
P20 _____	_____	_____	_____	_____	_____	_____	_____

TKT # 10012
I



Company Range Oil Company, Inc. Lease & Well No. Godfrey #1
 Elevation 1171 Kelly Bushing Cattleman Sand Effective Pay - Ft. Ticket No. 10013
 Date 5/17/82 Sec. 3 Twp. 34S Range 3E County Cowley State Kansas
 Test Approved by Greg D. Bolte Western Representative Norman Allen

Formation Test No. 2 Interval Tested from 3256 ft. to 3287 ft. Total Depth 3287 ft.
 Packer Depth 3256 ft. Size 6 3/4 in. Packer Depth - ft. Size - in.
 Packer Depth 3251 ft. Size 6 3/4 in. Packer Depth - ft. Size - in.
 Depth of Selective Zone Set -

Top Recorder Depth (Inside) 3280 ft. Recorder Number 1559 Cap. 4200
 Bottom Recorder Depth (Outside) 3283 ft. Recorder Number 2608 Cap. 4175
 Below Straddle Recorder Depth - ft. Recorder Number - Cap. -

Drilling Contractor Range Drlg. Rig #2 Drill Collar Length 150 I. D. 2 1/4 in.
 Mud Type chemical Viscosity 39 Weight Pipe Length - I. D. - in.
 Weight 9.6 Water Loss 10.4 cc. Drill Pipe Length 3086 I. D. 3.8 in.
 Chlorides 1,200 P.P.M. Test Tool Length 20 ft. Tool Size 5 1/2 OD in.
 Jars: Make - Serial Number - Anchor Length 31 ft. Size 5 1/2 OD in.
 Did Well Flow? No Reversed Out No Surface Choke Size 3/4 in. Bottom Choke Size 3/4 in.
 Main Hole Size 7 7/8 in. Tool Joint Size 4 1/2 XH in.

Blow: Very weak for six minutes.

Recovered 5 ft. of drilling mud
 Recovered ft. of
 Recovered ft. of
 Recovered ft. of
 Recovered ft. of

Remarks:

Time Set Packer(s) 2:25 A.M. Time Started Off Bottom 4:25 P.M. Maximum Temperature 113°
 Initial Hydrostatic Pressure 1629 (A) P.S.I.
 Initial Flow Period 30 Minutes (B) 39 P.S.I. to (C) 39 P.S.I.
 Initial Closed In Period 27 Minutes (D) 44 P.S.I.
 Final Flow Period 30 Minutes (E) 32 P.S.I. to (F) 32 P.S.I.
 Final Closed In Period 30 Minutes (G) 38 P.S.I.
 Final Hydrostatic Pressure 1618 (H) P.S.I.

WESTERN TESTING CO., INC.
Pressure Data

Date 5/17/82 Test Ticket No. 10013
 Recorder No. 1559 Capacity 4200 Location 3280 Ft.
 Clock No. -- Elevation 1171 Kelly Bushing Well Temperature 113 °F

Point	Pressure		Time Given	Time Computed
A Initial Hydrostatic Mud	<u>1629</u> P.S.I.	Open Tool	<u>2:25P</u> M	
B First Initial Flow Pressure	<u>39</u> P.S.I.	First Flow Pressure	<u>30</u> Mins.	<u>30</u> Mins.
C First Final Flow Pressure	<u>39</u> P.S.I.	Initial Closed-in Pressure	<u>30</u> Mins.	<u>27</u> Mins.
D Initial Closed-in Pressure	<u>44</u> P.S.I.	Second Flow Pressure	<u>30</u> Mins.	<u>30</u> Mins.
E Second Initial Flow Pressure	<u>32</u> P.S.I.	Final Closed-in Pressure	<u>30</u> Mins.	<u>30</u> Mins.
F Second Final Flow Pressure	<u>32</u> P.S.I.			
G Final Closed-in Pressure	<u>38</u> P.S.I.			
H Final Hydrostatic Mud	<u>1618</u> P.S.I.			

PRESSURE BREAKDOWN

First Flow Pressure
 Breakdown: 6 Inc.
 of 5 mins. and a
 final inc. of 0 Min.

Initial Shut-In
 Breakdown: 9 Inc.
 of 3 mins. and a
 final inc. of 0 Min.

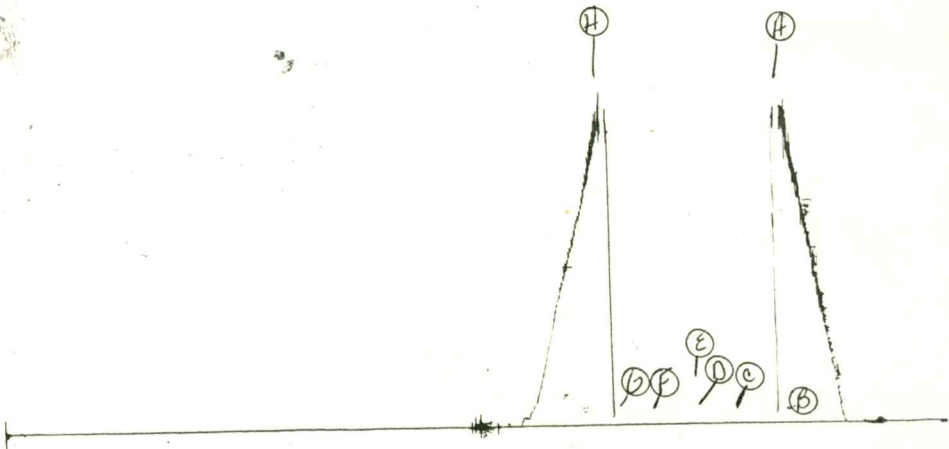
Second Flow Pressure
 Breakdown: 6 Inc.
 of 5 mins. and a
 final inc. of 0 Min.

Final Shut-In
 Breakdown: 10 Inc.
 of 3 mins. and a
 final inc. of 0 Min.

Point Mins.	Press.	Point Minutes	Press.	Point Minutes	Press.	Point Minutes	Press.
P 1 <u>0</u>	<u>39</u>	<u>0</u>	<u>39</u>	<u>0</u>	<u>32</u>	<u>0</u>	<u>32</u>
P 2 <u>5</u>	<u>39</u>	<u>3</u>	<u>39</u>	<u>5</u>	<u>32</u>	<u>3</u>	<u>33</u>
P 3 <u>10</u>	<u>39</u>	<u>6</u>	<u>39</u>	<u>10</u>	<u>32</u>	<u>6</u>	<u>34</u>
P 4 <u>15</u>	<u>39</u>	<u>9</u>	<u>39</u>	<u>15</u>	<u>32</u>	<u>9</u>	<u>35</u>
P 5 <u>20</u>	<u>39</u>	<u>12</u>	<u>39</u>	<u>20</u>	<u>32</u>	<u>12</u>	<u>36</u>
P 6 <u>25</u>	<u>39</u>	<u>15</u>	<u>39</u>	<u>25</u>	<u>32</u>	<u>15</u>	<u>37</u>
P 7 <u>30</u>	<u>39</u>	<u>18</u>	<u>40</u>	<u>30</u>	<u>32</u>	<u>18</u>	<u>38</u>
P 8 _____	_____	<u>21</u>	<u>41</u>	_____	_____	<u>21</u>	<u>38</u>
P 9 _____	_____	<u>24</u>	<u>42</u>	_____	_____	<u>24</u>	<u>38</u>
P10 _____	_____	<u>27</u>	<u>44</u>	_____	_____	<u>27</u>	<u>38</u>
P11 _____	_____	_____	_____	_____	_____	<u>30</u>	<u>38</u>
P12 _____	_____	_____	_____	_____	_____	_____	_____
P13 _____	_____	_____	_____	_____	_____	_____	_____
P14 _____	_____	_____	_____	_____	_____	_____	_____
P15 _____	_____	_____	_____	_____	_____	_____	_____
P16 _____	_____	_____	_____	_____	_____	_____	_____
P17 _____	_____	_____	_____	_____	_____	_____	_____
P18 _____	_____	_____	_____	_____	_____	_____	_____
P19 _____	_____	_____	_____	_____	_____	_____	_____
P20 _____	_____	_____	_____	_____	_____	_____	_____

JK # 10013

I



Company Range Oil Company, Inc. Lease & Well No. Godfrey #1
 Elevation 1171 Kelly Bushing Formation Bartlesville Sand Effective Pay - Ft. Ticket No. 10014
 Date 5/18/82 Sec 3 Twp 34S Range 3E County Cowley State Kansas
 Test Approved by Greg D. Bolte Western Representative Norman Allen

Formation Test No. 3 Interval Tested from 3339 ft. to 3351 ft. Total Depth 3351 ft.
 Packer Depth 3339 ft. Size 6 3/4 in. Packer Depth - ft. Size - in.
 Packer Depth 3334 ft. Size 6 3/4 in. Packer Depth - ft. Size - in.
 Depth of Selective Zone Set -

Top Recorder Depth (Inside) 3344 ft. Recorder Number 1559 Cap. 4200
 Bottom Recorder Depth (Outside) 3347 ft. Recorder Number 2608 Cap. 4175
 Below Straddle Recorder Depth - ft. Recorder Number - Cap. -

Drilling Contractor Range Drlg. Rig #2 Drill Collar Length 150 I. D. 2 3/4 in.
 Mud Type chemical Viscosity 56 Weight Pipe Length - I. D. - in.
 Weight 9.6 Water Loss 10.4 cc. Drill Pipe Length 3169 I. D. 3.8 in.
 Chlorides 1,600 P.P.M. Test Tool Length 20 ft. Tool Size 5 1/2 OD in.
 Jars: Make - Serial Number - Anchor Length 12 ft. Size 5 1/2 OD in.
 Did Well Flow? No Reversed Out No Surface Choke Size 3/4 Bottom Choke Size 3/4 in.
 Main Hole Size 7 7/8 Tool Joint Size 4 1/2 XH in.

Blow: Weak for fifteen minutes.

Recovered 25 ft. of drilling mud with few specks of oil
 Recovered ft. of
 Recovered ft. of
 Recovered ft. of
 Recovered ft. of

Remarks:

Time Set Packer(s) 8:00 ~~P.M.~~ ^{A.M.} Time Started Off Bottom 10:30 ~~P.M.~~ ^{A.M.} Maximum Temperature 114°
 Initial Hydrostatic Pressure 1675 (A) P.S.I.
 Initial Flow Period 30 Minutes (B) 18 P.S.I. to (C) 20 P.S.I.
 Initial Closed In Period 30 Minutes (D) 542 P.S.I.
 Final Flow Period 30 Minutes (E) 24 P.S.I. to (F) 24 P.S.I.
 Final Closed In Period 60 Minutes (G) 837 P.S.I.
 Final Hydrostatic Pressure 1658 (H) P.S.I.

WESTERN TESTING CO., INC.
Pressure Data

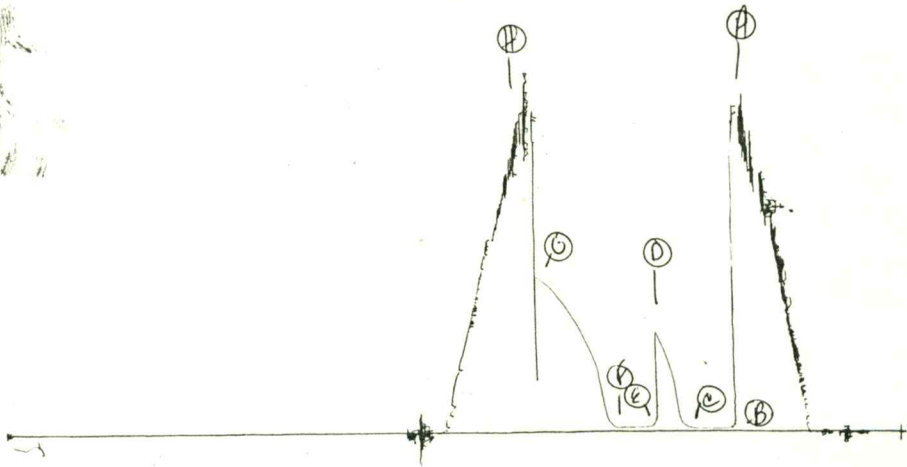
Date 5/18/82 Recorder No. 1559 Capacity 4200 Test Ticket No. 10014
 Clock No. --- Elevation 1171 Kelly Bushing Location 3344 Ft. ---
 Well Temperature 114 °F

Point	Pressure		Time	
			Given	Computed
A Initial Hydrostatic Mud	1675 P.S.I.	Open Tool	8:00A	M
B First Initial Flow Pressure	18 P.S.I.	First Flow Pressure	30	30 Mins.
C First Final Flow Pressure	20 P.S.I.	Initial Closed-in Pressure	30	30 Mins.
D Initial Closed-in Pressure	542 P.S.I.	Second Flow Pressure	30	30 Mins.
E Second Initial Flow Pressure	24 P.S.I.	Final Closed-in Pressure	60	60 Mins.
F Second Final Flow Pressure	24 P.S.I.			
G Final Closed-in Pressure	837 P.S.I.			
H Final Hydrostatic Mud	1658 P.S.I.			

PRESSURE BREAKDOWN

Point Mins.	First Flow Pressure		Initial Shut-In		Second Flow Pressure		Final Shut-In	
	Breakdown:		Breakdown:		Breakdown:		Breakdown:	
	6 Inc.		10 Inc.		6 Inc.		20 Inc.	
	of 5 mins. and a		of 3 mins. and a		of 5 mins. and a		of 3 mins. and a	
	final inc. of 0 Min.		final inc. of 0 Min.		final inc. of 0 Min.		final inc. of 0 Min.	
Point Mins.	Press.	Point Minutes	Press.	Point Minutes	Press.	Point Minutes	Press.	
P 1 0	18	0	20	0	24	0	24	
P 2 5	18	3	23	5	24	3	38	
P 3 10	18	6	33	10	24	6	67	
P 4 15	18	9	53	15	24	9	166	
P 5 20	18	12	146	20	24	12	280	
P 6 25	18	15	282	25	24	15	372	
P 7 30	20	18	359	30	24	18	428	
P 8		21	420			21	477	
P 9		24	475			24	523	
P10		27	525			27	562	
P11		30	542			30	601	
P12						33	636	
P13						36	672	
P14						39	702	
P15						42	727	
P16						45	757	
P17						48	779	
P18						51	801	
P19						54	816	
P20						57	831	
						60	837	

RR # 10014
I



Company Range Oil Company, Inc. Lease & Well No. Godfrey #1
 Elevation 1171 Kelly Bushing Formation Mississippi Chert Effective Pay - Ft. Ticket No. 10015
 Date 5/18/82 Sec. 3 Twp. 34S Range 3E County Cowley State Kansas
 Test Approved by Greg D. Bolte Western Representative Norman Allen

Formation Test No. 4 Interval Tested from 3370 ft. to 3386 ft. Total Depth 3386 ft.
 Packer Depth 3370 ft. Size 6 3/4 in. Packer Depth - ft. Size - in.
 Packer Depth 3365 ft. Size 6 3/4 in. Packer Depth - ft. Size - in.
 Depth of Selective Zone Set -

Top Recorder Depth (Inside) 3379 ft. Recorder Number 1559 Cap. 4200
 Bottom Recorder Depth (Outside) 3382 ft. Recorder Number 2608 Cap. 4175
 Below Straddle Recorder Depth - ft. Recorder Number - Cap. -

Drilling Contractor Range Drlg. Rig #2 Drill Collar Length 150 I. D. 2 1/4 in.
 Mud Type chemical Viscosity 56 Weight Pipe Length - I. D. - in.
 Weight 9.6 Water Loss 10.4 cc. Drill Pipe Length 3200 I. D. 3.8 in.
 Chlorides 1,600 P.P.M. Test Tool Length 20 ft. Tool Size 5 1/2 OD in.
 Jars: Make - Serial Number - Anchor Length 16 ft. Size 5 1/2 OD in.
 Did Well Flow? No Reversed Out No Surface Choke Size 3/4 Bottom Choke Size 3/4
 Main Hole Size 7 7/8 Tool Joint Size 4 1/2 XH in.

Blow: Weak for forty minutes.

Recovered 30 ft. of drilling mud
 Recovered - ft. of -
 Recovered - ft. of -
 Recovered - ft. of -
 Recovered - ft. of -

Remarks: -

Read outside chart.

Time Set Packer(s)	<u>8:30</u>	<u>AM</u>	Time Started Off Bottom	<u>11:00</u>	<u>AM</u>	Maximum Temperature	<u>114°</u>
		<u>P.M.</u>			<u>P.M.</u>		
Initial Hydrostatic Pressure			(A)	<u>1679</u>		P.S.I.	
Initial Flow Period	Minutes	<u>30</u>	(B)	<u>19</u>	P.S.I. to (C)	<u>19</u>	P.S.I.
Initial Closed In Period	Minutes	<u>30</u>	(D)	<u>34</u>		P.S.I.	
Final Flow Period	Minutes	<u>30</u>	(E)	<u>20</u>	P.S.I. to (F)	<u>20</u>	P.S.I.
Final Closed In Period	Minutes	<u>60</u>	(G)	<u>73</u>		P.S.I.	
Final Hydrostatic Pressure			(H)	<u>1647</u>		P.S.I.	

WESTERN TESTING CO., INC.
Pressure Data

Date 5/18/82
Recorder No. 2608
Clock No. -----

Capacity 4175
Elevation 1171 Kelly Bushing
Well Temperature 114 °F
Test Ticket No. 10015
Location 3382 Ft.

Point	Pressure	
A Initial Hydrostatic Mud	<u>1679</u>	P.S.I.
B First Initial Flow Pressure	<u>19</u>	P.S.I.
C First Final Flow Pressure	<u>19</u>	P.S.I.
D Initial Closed-in Pressure	<u>34</u>	P.S.I.
E Second Initial Flow Pressure	<u>20</u>	P.S.I.
F Second Final Flow Pressure	<u>20</u>	P.S.I.
G Final Closed-in Pressure	<u>73</u>	P.S.I.
H Final Hydrostatic Mud	<u>1647</u>	P.S.I.

Time Given	Time Computed
<u>8:30P</u>	<u>M</u>
<u>30</u> Mins.	<u>30</u> Mins.
<u>30</u> Mins.	<u>30</u> Mins.
<u>30</u> Mins.	<u>30</u> Mins.
<u>60</u> Mins.	<u>60</u> Mins.

PRESSURE BREAKDOWN

First Flow Pressure
Breakdown: 6 Inc.
of 5 mins. and a
final inc. of 0 Min.

Initial Shut-In
Breakdown: 10 Inc.
of 3 mins. and a
final inc. of 0 Min.

Second Flow Pressure
Breakdown: 6 Inc.
of 5 mins. and a
final inc. of 0 Min.

Final Shut-In
Breakdown: 20 Inc.
of 3 mins. and a
final inc. of 0 Min.

Point Mins.	Press.	Point Minutes	Press.	Point Minutes	Press.	Point Minutes	Press.
P 1 <u>0</u>	<u>19</u>	<u>0</u>	<u>19</u>	<u>0</u>	<u>20</u>	<u>0</u>	<u>20</u>
P 2 <u>5</u>	<u>19</u>	<u>3</u>	<u>20</u>	<u>5</u>	<u>20</u>	<u>3</u>	<u>20</u>
P 3 <u>10</u>	<u>19</u>	<u>6</u>	<u>21</u>	<u>10</u>	<u>20</u>	<u>6</u>	<u>20</u>
P 4 <u>15</u>	<u>19</u>	<u>9</u>	<u>23</u>	<u>15</u>	<u>20</u>	<u>9</u>	<u>21</u>
P 5 <u>20</u>	<u>19</u>	<u>12</u>	<u>24</u>	<u>20</u>	<u>20</u>	<u>12</u>	<u>22</u>
P 6 <u>25</u>	<u>19</u>	<u>15</u>	<u>26</u>	<u>25</u>	<u>20</u>	<u>15</u>	<u>23</u>
P 7 <u>30</u>	<u>19</u>	<u>18</u>	<u>27</u>	<u>30</u>	<u>20</u>	<u>18</u>	<u>26</u>
P 8 _____	_____	<u>21</u>	<u>28</u>	_____	_____	<u>21</u>	<u>29</u>
P 9 _____	_____	<u>24</u>	<u>30</u>	_____	_____	<u>24</u>	<u>32</u>
P10 _____	_____	<u>27</u>	<u>32</u>	_____	_____	<u>27</u>	<u>36</u>
P11 _____	_____	<u>30</u>	<u>34</u>	_____	_____	<u>30</u>	<u>40</u>
P12 _____	_____	_____	_____	_____	_____	<u>33</u>	<u>43</u>
P13 _____	_____	_____	_____	_____	_____	<u>36</u>	<u>46</u>
P14 _____	_____	_____	_____	_____	_____	<u>39</u>	<u>50</u>
P15 _____	_____	_____	_____	_____	_____	<u>42</u>	<u>54</u>
P16 _____	_____	_____	_____	_____	_____	<u>45</u>	<u>58</u>
P17 _____	_____	_____	_____	_____	_____	<u>48</u>	<u>61</u>
P18 _____	_____	_____	_____	_____	_____	<u>51</u>	<u>65</u>
P19 _____	_____	_____	_____	_____	_____	<u>54</u>	<u>67</u>
P20 _____	_____	_____	_____	_____	_____	<u>57</u>	<u>70</u>
						<u>60</u>	<u>73</u>

TKT # 10015

0

