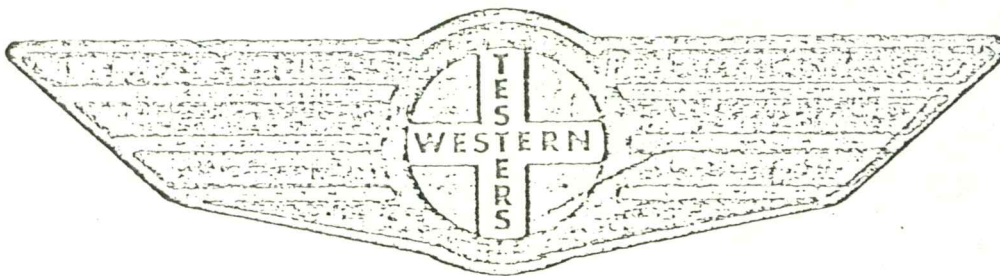


FORMATION

TEST

REPORT



Home Office:

Wichita, Kansas 67201

P.O. Box 1599

Phone (316) 262-5861

Company \_\_\_\_\_ RANGE OIL CO., INC. \_\_\_\_\_ Lease and Well No. \_\_\_\_\_ #1 BEKRIE \_\_\_\_\_ Sec. 11 \_\_\_\_\_ Twp. 34S \_\_\_\_\_ Rge. 3E \_\_\_\_\_ Test No. 1 \_\_\_\_\_ Date 7/7/84

WESTERN TESTING COMPANY INC.  
SUBSURFACE PRESSURE SURVEY

DATE: 7/7/84  
 CUSTOMER: RANGE OIL COMPANY INC.  
 WELL: 1 TEST: 1  
 ELEVATION (KB): 1170 FORMATION: LAYTON SAND  
 SECTION: 11 TOWNSHIP: 34S  
 RANGE: 3E COUNTY: COWLEY STATE: KANSAS  
 GAUGE SN #13266 RANGE: 4200 CLOCK: 12

INTERVAL TEST FROM: 2635 FT TO: 2642 FT TOTAL DEPTH: 2642 FT  
 DEPTH OF SELECTIVE ZONE: FT  
 PACKER DEPTH: 2635 FT SIZE: 6 3/4 IN PACKER DEPTH: 2630 FT SIZE: 6 3/4 IN  
 PACKER DEPTH: FT SIZE: IN PACKER DEPTH: FT SIZE: IN

DRILLING CONTRACTOR: RANGE DRILLING  
 MUD TYPE: CHEMICAL VISCOSITY: 42  
 WEIGHT: 9.8 WATER LOSS (CC): 14  
 CHLORIDES (P.P.M.): 1800

JARS - MAKE: SERIAL NUMBER:  
 DID WELL FLOW? GAS REVERSED OUT? NO  
 DRILL COLLAR LENGTH: 120 FT I.D.: 2.25 IN  
 WEIGHT PIPE LENGTH: FT I.D.: IN  
 DRILL PIPE LENGTH: 2490 FT I.D.: 3.8 IN  
 TEST TOOL LENGTH: 25 FT TOOL SIZE: 5 1/2 O.D. IN  
 ANCHOR LENGTH: 7 FT SIZE: 5 1/2 O.D. IN  
 SURFACE CHOKE SIZE: 3/4 IN BOTTOM CHOKE SIZE: 3/4 IN  
 MAIN HOLE SIZE: 7 7/8 IN TOOL JOINT SIZE: 5 1/2 O.D. IN

BLOW: STRONG THROUGHOUT TEST. GAS TO SURFACE IN 3 MINUTES.

RECOVERED: 65 FT OF: OIL & GAS CUT MUD  
 RECOVERED: FT OF: SAMPLE GROUND OUT; 10% OIL AT TOP; 50% OIL AT  
 RECOVERED: FT OF: BOTTOM; 39 GRAVITY  
 RECOVERED: FT OF: CHLORIDES 2200 PPM  
 RECOVERED: FT OF:  
 RECOVERED: FT OF:  
 RECOVERED: FT OF:  
 RECOVERED: FT OF:  
 RECOVERED: FT OF:  
 RECOVERED: FT OF:

REMARKS:

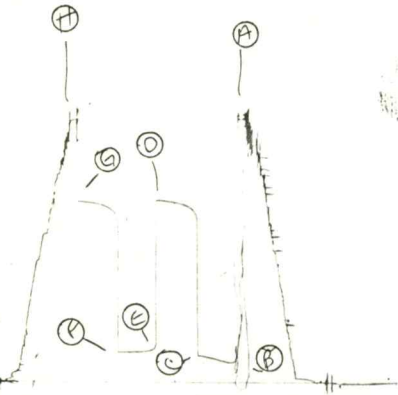
TIME SET PACKER(S): 1:45 P.M. TIME STARTED OFF BOTTOM: 3:45 P.M.  
 WELL TEMPERATURE: 100 °F  
 INITIAL HYDROSTATIC PRESSURE: (A) 1364 PSI  
 INITIAL FLOW PERIOD MIN: 30 (B) 107 PSI TO (C) 142 PSI  
 INITIAL CLOSED IN PERIOD MIN: 30 (D) 942 PSI  
 FINAL FLOW PERIOD MIN: 30 (E) 158 PSI TO (F) 158 PSI  
 FINAL CLOSED IN PERIOD MIN: 30 (G) 934 PSI  
 FINAL HYDROSTATIC PRESSURE (H) 1353 PSI





4110# 5557

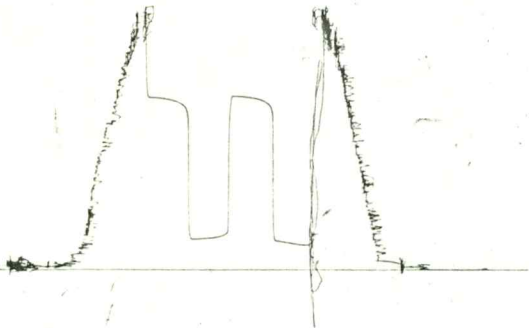
I



122 C 68 004# 1

4ck# 5557

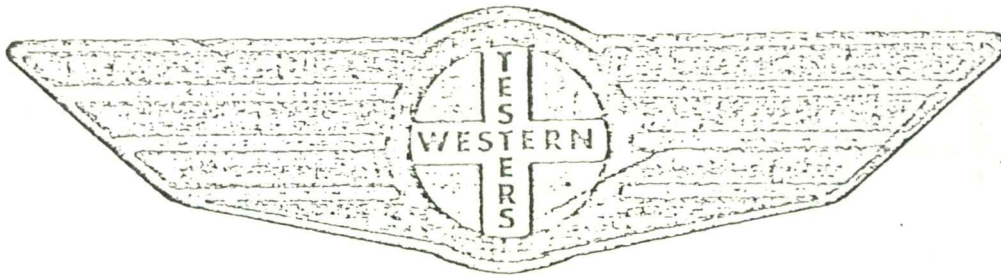
0



FORMATION

TEST

REPORT



Home Office:

Wichita, Kansas 67201

P.O. Box 1599

Phone (316) 262-5861

Company RANGE OIL CO., INC. Lease and Well No. #1 BERRIE Sec. 11 Twp. 34S Rge. 3E Test No. 2 Date 11/1/81

WESTERN TESTING COMPANY INC.  
SUBSURFACE PRESSURE SURVEY

DATE: 7/7/84 TICKET #5558  
 CUSTOMER: RANGE OIL COMPANY INC. LEASE: BERRIE  
 WELL: 1 TEST: 2 GEOLOGIST: LAUER  
 ELEVATION (KB): 1170 FORMATION: LAYTON  
 SECTION: 11 TOWNSHIP: 34S  
 RANGE: 3E COUNTY: COWLEY STATE: KANSAS  
 GAUGE SN #13266 RANGE: 4200 CLOCK: 12

INTERVAL TEST FROM: 2653 FT TO: 2663 FT TOTAL DEPTH: 2663 FT  
 DEPTH OF SELECTIVE ZONE: FT  
 PACKER DEPTH: 2653 FT SIZE: 6 3/4 IN PACKER DEPTH: 2648 FT SIZE: 6 3/4 IN  
 PACKER DEPTH: FT SIZE: IN PACKER DEPTH: FT SIZE: IN

DRILLING CONTRACTOR: RANGE DRILLING  
 MUD TYPE: CHEMICAL VISCOSITY: 42  
 WEIGHT: 9.8 WATER LOSS (CC):  
 CHLORIDES (P.P.M.): 1800  
 JARS - MAKE: SERIAL NUMBER:  
 DID WELL FLOW? NO REVERSED OUT? NO  
 DRILL COLLAR LENGTH: 120 FT I.D.: 2.25 IN  
 WEIGHT PIPE LENGTH: FT I.D.: IN  
 DRILL PIPE LENGTH: 2513 FT I.D.: 3.8 IN  
 TEST TOOL LENGTH: 20 FT TOOL SIZE: 5 1/2 O.D. IN  
 ANCHOR LENGTH: 10 FT SIZE: 5 1/2 O.D. IN  
 SURFACE CHOKE SIZE: 3/4 IN BOTTOM CHOKE SIZE: 3/4 IN  
 MAIN HOLE SIZE: 7 7/8 IN TOOL JOINT SIZE: 4 1/2 X.H. IN

BLOW: WEAK TO VERY WEAK AFTER TOOL SLID TO BOTTOM.

RECOVERED: 70 FT OF: DRILLING MUD  
 RECOVERED: FT OF: CHLORIDES 26200 PPM  
 RECOVERED: FT OF:  
 RECOVERED: FT OF:  
 RECOVERED: FT OF:  
 RECOVERED: FT OF:  
 RECOVERED: FT OF:  
 RECOVERED: FT OF:  
 RECOVERED: FT OF:  
 RECOVERED: FT OF:

REMARKS: SLID TOOL 6 FEET TO BOTTOM. PLUGGED TOOL ON  
 INITIAL FLOW PERIOD. PLUGGING ACTION ON FINAL  
 FLOW PERIOD.

TIME SET PACKER(S): 10:30 P.M. TIME STARTED OFF BOTTOM: 12:30 A.M.  
 WELL TEMPERATURE: 100 °F  
 INITIAL HYDROSTATIC PRESSURE: (A) 1374 PSI  
 INITIAL FLOW PERIOD MIN: 30 (B) 86 PSI TO (C) 187 PSI  
 INITIAL CLOSED IN PERIOD MIN: 30 (D) 966 PSI  
 FINAL FLOW PERIOD MIN: 30 (E) 109 PSI TO (F) 65 PSI  
 FINAL CLOSED IN PERIOD MIN: 36 (G) 864 PSI  
 FINAL HYDROSTATIC PRESSURE (H) 1374 PSI



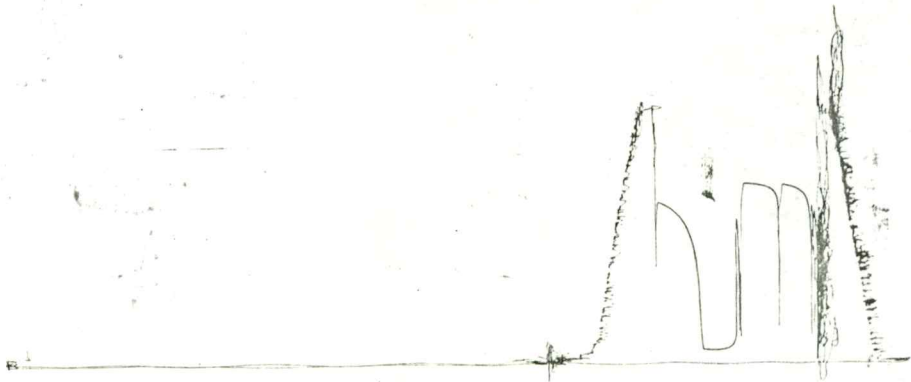
CK# 5558

I



406 # 5558.

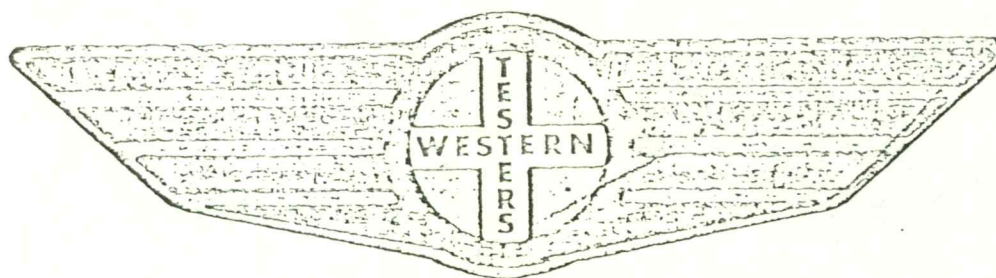
0.



FORMATION

TEST

REPORT



Home Office:

Wichita, Kansas 67201

P.O. Box 1599

Phone (316) 262-5861

Company \_\_\_\_\_ RANGE OIL CO., INC. \_\_\_\_\_ Lease and Well No. \_\_\_\_\_ #1 BERRIE \_\_\_\_\_ Sec. 11 Twp. 34S Rge. 3E Test No. 3 Date 1/8/84

WESTERN TESTING COMPANY INC.  
SUBSURFACE PRESSURE SURVEY

DATE: 7/8/84  
CUSTOMER: RANGE OIL COMPANY INC.  
WELL: 1 TEST: 3  
ELEVATION (KB): 1170 FORMATION: LAYTON  
SECTION: 11 TOWNSHIP: 34S  
RANGE: 3E COUNTY: COWLEY STATE: KANSAS  
GAUGE SN #13266 RANGE: 4200 CLOCK: 12

INTERVAL TEST FROM: 2653 FT TO: 2663 FT TOTAL DEPTH: 2663 FT  
DEPTH OF SELECTIVE ZONE: FT  
PACKER DEPTH: 2653 FT SIZE: 6 3/4 IN PACKER DEPTH: 2648 FT SIZE: 6 3/4 IN  
PACKER DEPTH: FT SIZE: IN PACKER DEPTH: FT SIZE: IN

DRILLING CONTRACTOR: RANGE DRILLING  
MUD TYPE: CHEMICAL VISCOSITY: 36  
WEIGHT: 9.8 WATER LOSS (CC): 14.4  
CHLORIDES (P.P.M.): 2200  
JARS - MAKE: SERIAL NUMBER:  
DID WELL FLOW? NO REVERSED OUT? NO  
DRILL COLLAR LENGTH: 120 FT I.D.: 2.25 IN  
WEIGHT PIPE LENGTH: FT I.D.: IN  
DRILL PIPE LENGTH: 2513 FT I.D.: 3.8 IN  
TEST TOOL LENGTH: 20 FT TOOL SIZE: 5 1/2 O.D. IN  
ANCHOR LENGTH: 10 FT SIZE: 5 1/2 O.D. IN  
SURFACE CHOKE SIZE: 3/4 IN BOTTOM CHOKE SIZE: 3/4 IN  
MAIN HOLE SIZE: 7 7/8 IN TOOL JOINT SIZE: 4 1/2 X.H. IN

BLOW: FAIR THROUGHOUT TEST.

RECOVERED: 160 FT OF: SALT WATER  
RECOVERED: FT OF: CHLORIDES 25000 PPM  
RECOVERED: FT OF:  
RECOVERED: FT OF:  
RECOVERED: FT OF:  
RECOVERED: FT OF:  
RECOVERED: FT OF:  
RECOVERED: FT OF:  
RECOVERED: FT OF:

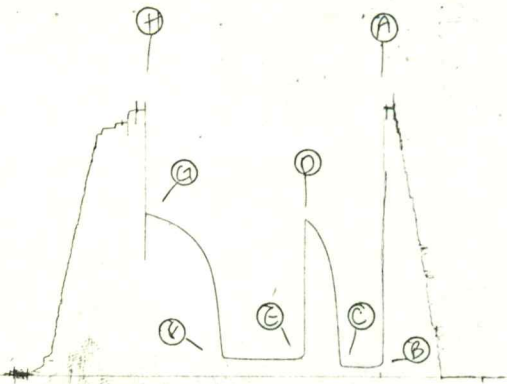
REMARKS:

TIME SET PACKER(S): 8:15 A.M. TIME STARTED OFF BOTTOM: 11:15 A.M.  
WELL TEMPERATURE: 100 °F  
INITIAL HYDROSTATIC PRESSURE: (A) 1392 PSI  
INITIAL FLOW PERIOD MIN: 30 (B) 52 PSI TO (C) 58 PSI  
INITIAL CLOSED IN PERIOD MIN: 30 (D) 813 PSI  
FINAL FLOW PERIOD MIN: 60 (E) 92 PSI TO (F) 100 PSI  
FINAL CLOSED IN PERIOD MIN: 57 (G) 849 PSI  
FINAL HYDROSTATIC PRESSURE (H) 1375 PSI



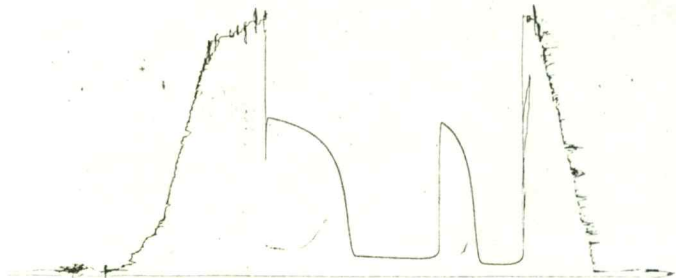
YCC# 5559

I



ACK# 5559

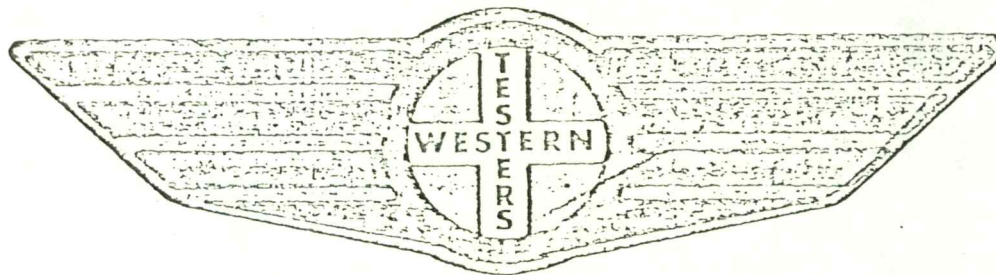
0



FORMATION

TEST

REPORT



Home Office:

Wichita, Kansas 67201

P.O. Box 1599

Phone (316) 262-5861

WESTERN TESTING COMPANY INC.  
SUBSURFACE PRESSURE SURVEY

DATE: 7/9/84 TICKET #5560  
 CUSTOMER: RANGE OIL COMPANY INC. LEASE: BERRIE  
 WELL: #1 TEST: 4 GEOLOGIST: LAUER  
 ELEVATION (KB): 1172 FORMATION: K.C.  
 SECTION: 11 TOWNSHIP: 34S  
 RANGE: 3E COUNTY: COWLEY STATE: KANSAS  
 GAUGE SN #13266 RANGE: 4200 CLOCK: 12

INTERVAL TEST FROM: 2866 FT TO: 2884 FT TOTAL DEPTH: 2884 FT  
 DEPTH OF SELECTIVE ZONE: FT  
 PACKER DEPTH: 2866 FT SIZE: 6 3/4 IN PACKER DEPTH: 2861 FT SIZE: 6 3/4 IN  
 PACKER DEPTH: FT SIZE: IN PACKER DEPTH: FT SIZE: IN

DRILLING CONTRACTOR: RANGE  
 MUD TYPE: CHEM VISCOSITY: 42  
 WEIGHT: 10.1 WATER LOSS (CC): 12.4  
 CHLORIDES (P.P.M.): 2900  
 JARS - MAKE: SERIAL NUMBER:  
 DID WELL FLOW? NO REVERSED OUT? NO  
 DRILL COLLAR LENGTH: 120 FT I.D.: 2.25 IN  
 WEIGHT PIPE LENGTH: FT I.D.: IN  
 DRILL PIPE LENGTH: 2726 FT I.D.: 3.8 IN  
 TEST TOOL LENGTH: 20 FT TOOL SIZE: 5 1/2 O.D. IN  
 ANCHOR LENGTH: 18 FT SIZE: 5 1/2 O.D. IN  
 SURFACE CHOKE SIZE: 3/4 IN BOTTOM CHOKE SIZE: 3/4 IN  
 MAIN HOLE SIZE: 7 7/8 IN TOOL JOINT SIZE: 4 1/2 XH IN

BLOW: WEAK BLOW FOR 15 MINUTES.

RECOVERED: 5 FT OF: DRILLING MUD. CHLORIDES 2800 P.P.M.  
 RECOVERED: FT OF:  
 RECOVERED: FT OF:  
 RECOVERED: FT OF:  
 RECOVERED: FT OF:  
 RECOVERED: FT OF:  
 RECOVERED: FT OF:  
 RECOVERED: FT OF:  
 RECOVERED: FT OF:  
 RECOVERED: FT OF:

REMARKS:

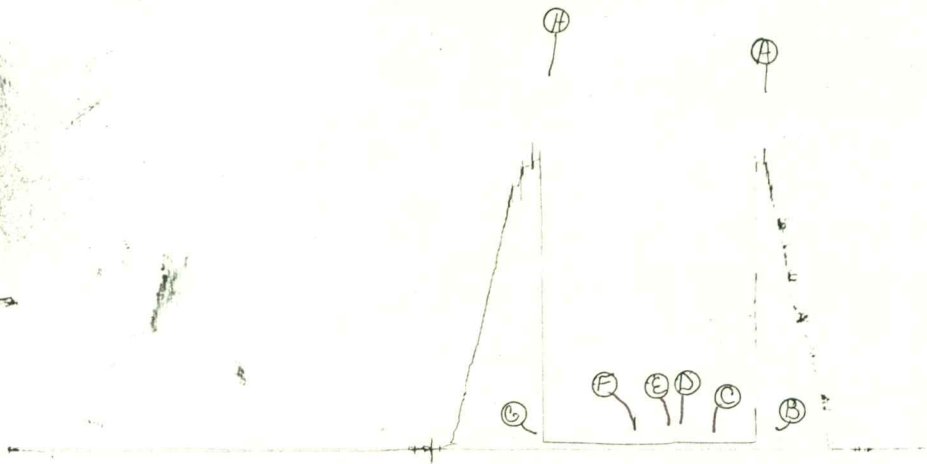
TIME SET PACKER(S): 8:00 A.M. TIME STARTED OFF BOTTOM: 10:30 A.M.  
 WELL TEMPERATURE: 108 °F  
 INITIAL HYDROSTATIC PRESSURE: (A) 1492 PSI  
 INITIAL FLOW PERIOD MIN: 30 (B) 35 PSI TO (C) 35 PSI  
 INITIAL CLOSED IN PERIOD MIN: 30 (D) 38 PSI  
 FINAL FLOW PERIOD MIN: 30 (E) 25 PSI TO (F) 25 PSI  
 FINAL CLOSED IN PERIOD MIN: 66 (G) 37 PSI  
 FINAL HYDROSTATIC PRESSURE (H) 1492 PSI



TKT # 5560

---

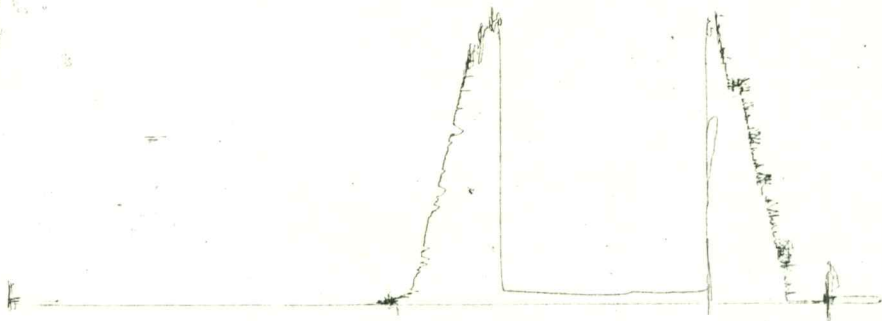
I



TKT# 5560

---

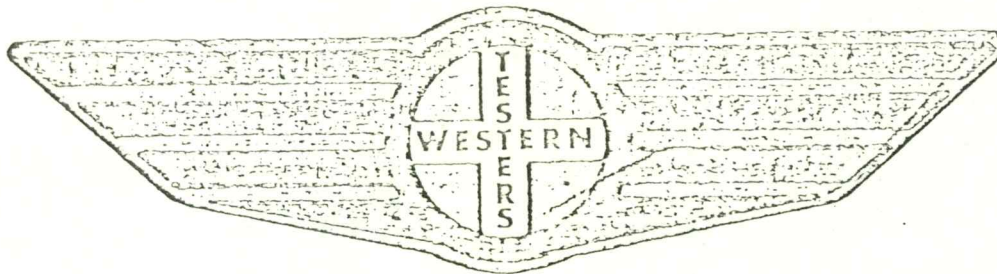
0



FORMATION

TEST

REPORT



Home Office:

Wichita, Kansas 67201

P.O. Box 1599

Phone (316) 262-5861

Company RANGE OIL CO., INC. Lease and Well No. #1 BERRIE Sec. 11 Twp. 34S Rge. 3E Test No. 5 Date 7/9/84

WESTERN TESTING COMPANY INC.  
SUBSURFACE PRESSURE SURVEY

DATE: 7/9/84  
CUSTOMER: RANGE OIL COMPANY INC.  
WELL: 1 TEST: 5  
ELEVATION (KB): 1172 FORMATION: CLEVELAND  
SECTION: 11 TOWNSHIP: 34S  
RANGE: 3E COUNTY: COWLEY STATE: KANSAS  
GAUGE SN #13266 RANGE: 4200 CLOCK: 12

INTERVAL TEST FROM: 2943 FT TO: 2977 FT TOTAL DEPTH: 2977 FT  
DEPTH OF SELECTIVE ZONE: FT  
PACKER DEPTH: 2943 FT SIZE: 6 3/4 IN PACKER DEPTH: 2938 FT SIZE: 6 3/4 IN  
PACKER DEPTH: FT SIZE: IN PACKER DEPTH: FT SIZE: IN

DRILLING CONTRACTOR: RANGE DRILLING  
MUD TYPE: CHEMICAL VISCOSITY: 42  
WEIGHT: 10.1 WATER LOSS (CC): 12.4  
CHLORIDES (P.P.M.): 2900  
JARS - MAKE: SERIAL NUMBER:  
DID WELL FLOW? REVERSED OUT?  
DRILL COLLAR LENGTH: 120 FT I.D.: 2.25 IN  
WEIGHT PIPE LENGTH: FT I.D.: IN  
DRILL PIPE LENGTH: 2803 FT I.D.: 3.8 IN  
TEST TOOL LENGTH: 20 FT TOOL SIZE: 5 1/2 O.D. IN  
ANCHOR LENGTH: 34 FT SIZE: 5 1/2 O.D. IN  
SURFACE CHOKE SIZE: 3/4 IN BOTTOM CHOKE SIZE: 3/4 IN  
MAIN HOLE SIZE: 7 7/8 IN TOOL JOINT SIZE: 4 1/2 X.H. IN

BLOW: STRONG THROUGHOUT TEST. GAS TO SURFACE 10  
MINUTES INTO FINAL SHUT-IN; TOO SMALL TO MEASURE

RECOVERED: 120 FT OF: GAS CUT MUD WITH SLIGHT SHOW OF OIL; 2% OIL.  
RECOVERED: FT OF: CHLORIDES 3200 PPM  
RECOVERED: FT OF:  
RECOVERED: FT OF:  
RECOVERED: FT OF:  
RECOVERED: FT OF:  
RECOVERED: FT OF:  
RECOVERED: FT OF:  
RECOVERED: FT OF:  
RECOVERED: FT OF:

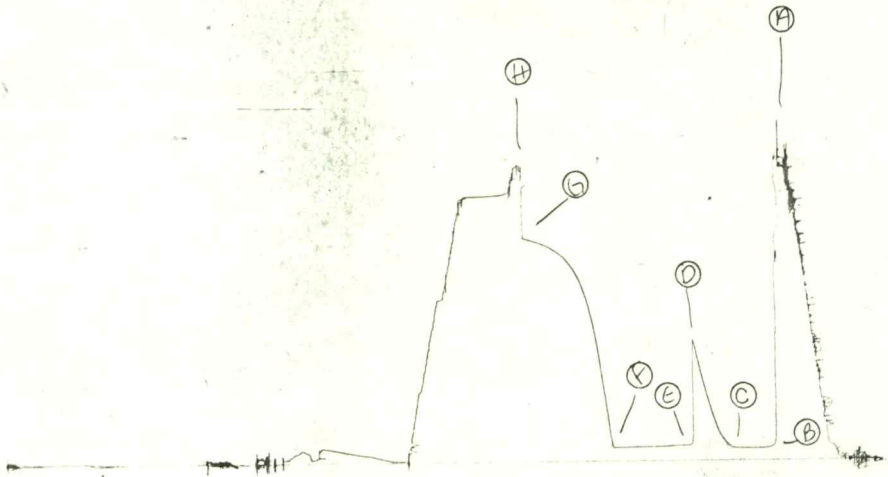
REMARKS:

TIME SET PACKER(S): 10:30 A.M. TIME STARTED OFF BOTTOM: 1:30 P.M.  
WELL TEMPERATURE: 112 °F  
INITIAL HYDROSTATIC PRESSURE: (A) 1516 PSI  
INITIAL FLOW PERIOD MIN: 30 (B) 67 PSI TO (C) 70 PSI  
INITIAL CLOSED IN PERIOD MIN: 30 (D) 633 PSI  
FINAL FLOW PERIOD MIN: 60 (E) 74 PSI TO (F) 74 PSI  
FINAL CLOSED IN PERIOD MIN: 63 (G) 1156 PSI  
FINAL HYDROSTATIC PRESSURE (H) 1510 PSI



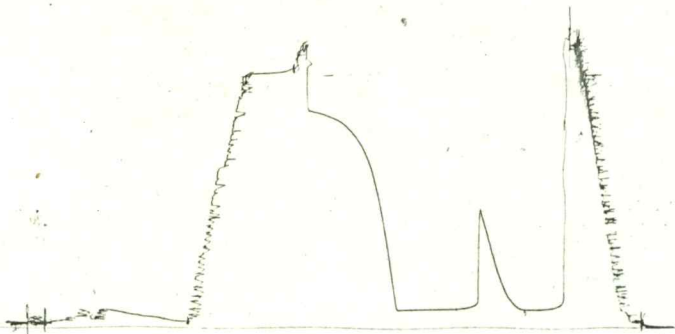
+CK# 5561

I



fcktt 5561

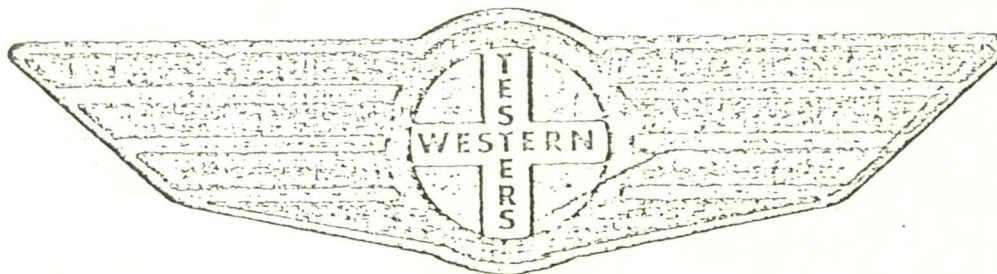
0



FORMATION

TEST

REPORT



Home Office:

Wichita, Kansas 67201

P.O. Box 1599

Phone (316) 262-5861

Company \_\_\_\_\_ RANGE OIL CO., INC. \_\_\_\_\_ Lease and Well No. #1 BERRIE \_\_\_\_\_ Sec. 11 Twp. 34S Rge. 3E Test No. \_\_\_\_\_ Date //10/

WESTERN TESTING COMPANY INC.  
SUBSURFACE PRESSURE SURVEY

DATE: 7/10/84 TICKET #5562  
 CUSTOMER: RANGE OIL COMPANY INC. LEASE: BERRIE  
 WELL: 1 TEST: 6 GEOLOGIST: MCMAHON  
 ELEVATION (KB): 1172 FORMATION: CLEVELAND  
 SECTION: 11 TOWNSHIP: 34S  
 RANGE: 3E COUNTY: COWLEY STATE: KANSAS  
 GAUGE SN #13266 RANGE: 4200 CLOCK: 12

INTERVAL TEST FROM: 2977 FT TO: 2992 FT TOTAL DEPTH: 2992 FT  
 DEPTH OF SELECTIVE ZONE: FT  
 PACKER DEPTH: 2977 FT SIZE: 6 3/4 IN PACKER DEPTH: 2972 FT SIZE: 6 3/4 IN  
 PACKER DEPTH: FT SIZE: IN PACKER DEPTH: FT SIZE: IN

DRILLING CONTRACTOR: RANGE DRILLING  
 MUD TYPE: CHEMICAL VISCOSITY: 42  
 WEIGHT: 9.9 WATER LOSS (CC): 12.0  
 CHLORIDES (P.P.M.): 2200  
 JARS - MAKE: SERIAL NUMBER:  
 DID WELL FLOW? NO REVERSED OUT? NO  
 DRILL COLLAR LENGTH: 120 FT I.D.: 2.25 IN  
 WEIGHT PIPE LENGTH: FT I.D.: IN  
 DRILL PIPE LENGTH: 2837 FT I.D.: 3.8 IN  
 TEST TOOL LENGTH: 20 FT TOOL SIZE: 5 1/2 O.D. IN  
 ANCHOR LENGTH: 15 FT SIZE: 5 1/2 O.D. IN  
 SURFACE CHOKE SIZE: 3/4 IN BOTTOM CHOKE SIZE: 3/4 IN  
 MAIN HOLE SIZE: 7 7/8 IN TOOL JOINT SIZE: 4 1/2 X.H. IN

BLOW: STRONG DIMENSHING TO FAIR AT END OF TEST.

RECOVERED: 410 FT OF: GAS ABOVE FLUID  
 RECOVERED: 40 FT OF: OIL & GAS CUT MUD; 10% OIL; 90% MUD  
 RECOVERED: 150 FT OF: SLIGHTLY MUDDY SALT WATER  
 RECOVERED: FT OF: CHLORIDES 118000 PPM  
 RECOVERED: FT OF:  
 RECOVERED: FT OF:  
 RECOVERED: FT OF:  
 RECOVERED: FT OF:  
 RECOVERED: FT OF:

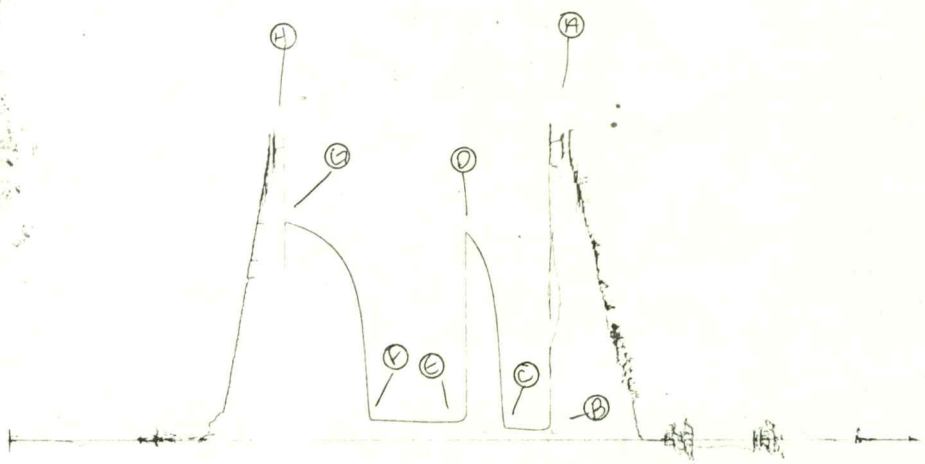
REMARKS:

TIME SET PACKER(S): 1:00 P.M. TIME STARTED OFF BOTTOM: 4:00 P.M.  
 WELL TEMPERATURE: 113 °F  
 INITIAL HYDROSTATIC PRESSURE: (A) 1542 PSI  
 INITIAL FLOW PERIOD MIN: 30 (B) 58 PSI TO (C) 67 PSI  
 INITIAL CLOSED IN PERIOD MIN: 30 (D) 1081 PSI  
 FINAL FLOW PERIOD MIN: 70 (E) 99 PSI TO (F) 110 PSI  
 FINAL CLOSED IN PERIOD MIN: 63 (G) 1131 PSI  
 FINAL HYDROSTATIC PRESSURE (H) 1510 PSI



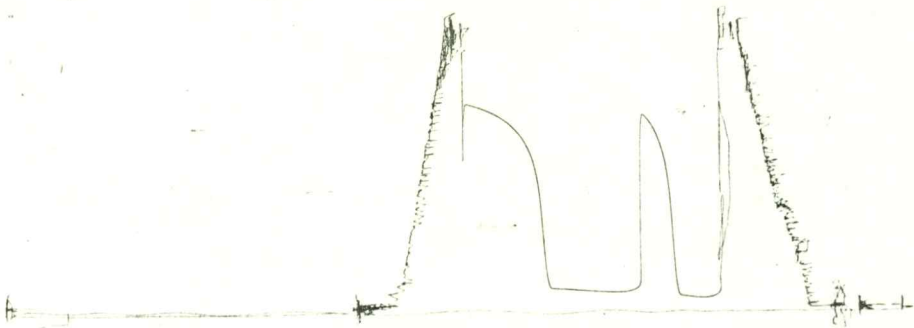
TKK# 5562

I



TCK# 5562

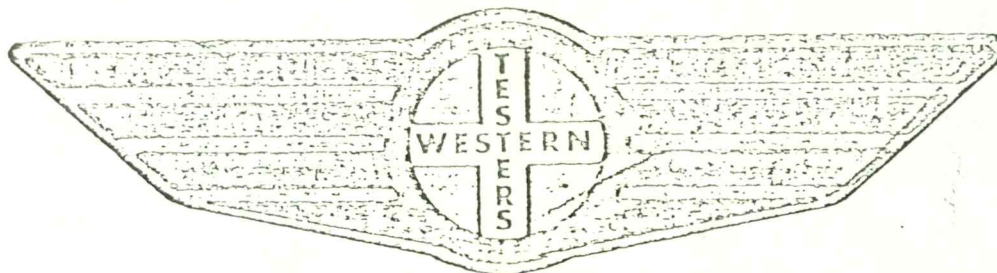
O



FORMATION

TEST

REPORT



Home Office:

Wichita, Kansas 67201

P.O. Box 1599

Phone (316) 262-5861

Company RANGE OIL COMPANY INC. Lease and Well No. #1 BERRIE Sec. 11 Twp. 34s Rge. 3E Test No. 7 Date 7/11/8



WESTERN TESTING CO. INC.  
SUBSURFACE PRESSURE SURVEY

DATE: 7/11/84 TICKET #5563  
CUSTOMER: RANGE OIL COMPANY INC. LEASE: BERRIE  
WELL: 1 TEST: 7 GEOLOGIST: MCMAHON  
ELEVATION (KB): 1172 FORMATION: MISSISSIPPI  
SECTION: 11 TOWNSHIP: 34S  
RANGE: 3E COUNTY: COWLEY STATE: KANSAS  
GAUGE SN #13266 RANGE: 4200 CLOCK: 12

INTERVAL TEST FROM: 3386 FT TO: 3395 FT TOTAL DEPTH: 3395 FT  
DEPTH OF SELECTIVE ZONE: FT  
PACKER DEPTH: 3386 FT SIZE: 6 3/4 IN PACKER DEPTH: 3381 FT SIZE: 6 3/4 IN  
PACKER DEPTH: FT SIZE: IN PACKER DEPTH: FT SIZE: IN

DRILLING CONTRACTOR: RANGE DRLG  
MUD TYPE: CHEMICAL VISCOSITY: 52  
WEIGHT: 10.0 WATER LOSS (CC): 12.0  
CHLORIDES (P.P.M.): 2400  
JARS - MAKE: SERIAL NUMBER:  
DID WELL FLOW? NO REVERSED OUT? NO  
DRILL COLLAR LENGTH: 120 FT I.D.: 2.25 IN  
WEIGHT PIPE LENGTH: FT I.D.: IN  
DRILL PIPE LENGTH: 3246 FT I.D.: 3.8 IN  
TEST TOOL LENGTH: 20 FT TOOL SIZE: 5 1/2 OD IN  
ANCHOR LENGTH: 9 FT SIZE: 5 1/2 OD IN  
SURFACE CHOKE SIZE: 3/4 IN BOTTOM CHOKE SIZE: 3/4 IN  
MAIN HOLE SIZE: 7 7/8 IN TOOL JOINT SIZE: 4 1/2 XH IN

BLOW: WEAK BLOW THROUGHOUT TEST.

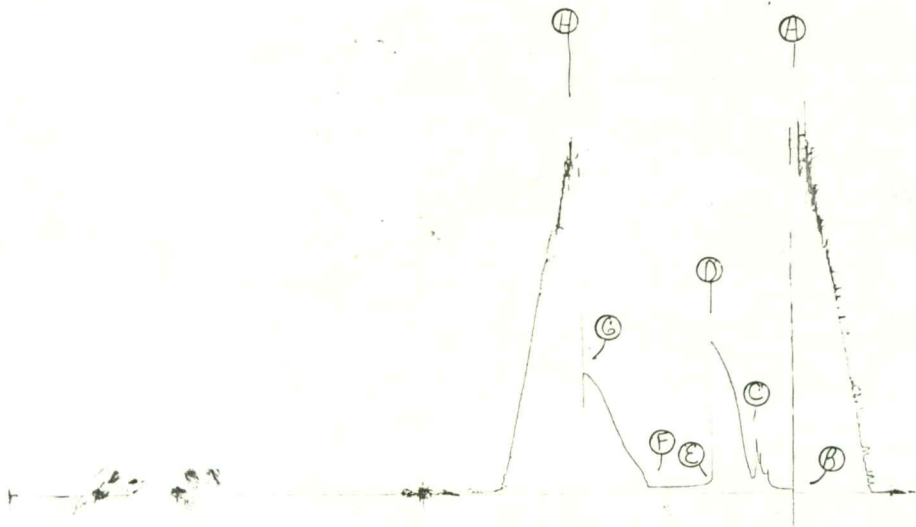
RECOVERED: 30 FT OF: DRILLING MUD WITH SLIGHT SHOW OF OIL.  
RECOVERED: FT OF: 2% OIL; 98% MUD.  
RECOVERED: FT OF: CHLORIDES 3100 PPM.  
RECOVERED: FT OF:  
RECOVERED: FT OF:  
RECOVERED: FT OF:  
RECOVERED: FT OF:  
RECOVERED: FT OF:  
RECOVERED: FT OF:  
RECOVERED: FT OF:

REMARKS: PLUGGING ACTION ON THE INITIAL  
FLOW PERIOD.

TIME SET PACKER(S): 7:30 PM TIME STARTED OFF BOTTOM: 10:00 PM  
WELL TEMPERATURE: 115 °F  
INITIAL HYDROSTATIC PRESSURE: (A) 1780 PSI  
INITIAL FLOW PERIOD MIN: 30 (B) 21 PSI TO (C) 78 PSI  
INITIAL CLOSED IN PERIOD MIN: 30 (D) 793 PSI  
FINAL FLOW PERIOD MIN: 45 (E) 34 PSI TO (F) 34 PSI  
FINAL CLOSED IN PERIOD MIN: 51 (G) 638 PSI  
FINAL HYDROSTATIC PRESSURE (H) 1760 PSI

TKI # 5563

I



TKT # 5563

---

0

