

Section 35 Township 34 Range 6-E

Sec. 35 Twp. 34 R. 6-E

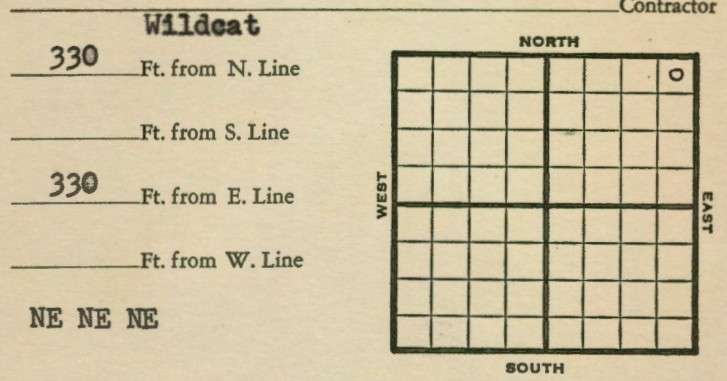
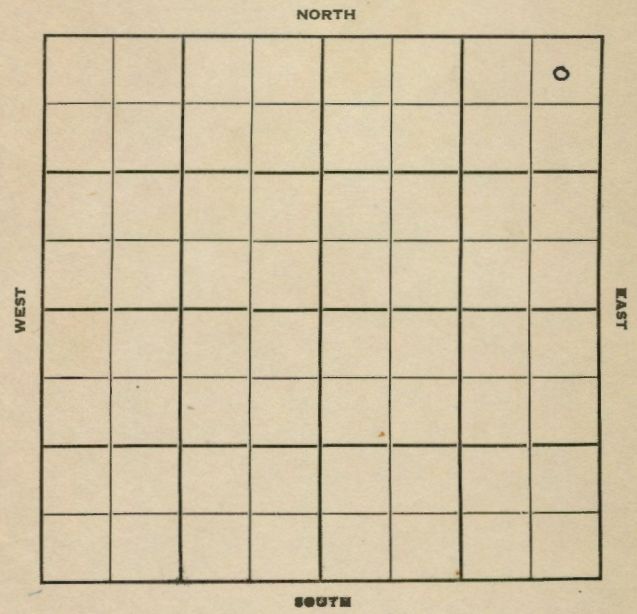
Well No. #1 Jude

Well No. #1 Jude Farm

Company Murfin

Murfin Company

Contractor



Wilcoat
330 Ft. from N. Line
 _____ Ft. from S. Line
330 Ft. from E. Line
 _____ Ft. from W. Line

NE NE NE

1950		Elev 1356	REPORT
5/17	Rig up		
8/16	12" @ 919		
	8" @ 1706		
	7" @ 2450		
	Chat 3020		Miss 3060
	B Miss 2317		Arb 3392
	TD 3436		
	D&A		
ABANDONED			

County Cowley State Kansas
 Sec. 35 (Blk. 34 (Sur. 6E) Twp.) Map No.

Operator Murfin Drlg.
 Well No. 1 Farm Jude

Elev. 1356 Location NE NE NE

330 Ft. From N Line NE
330 Ft. From E Line Quarter

Ist. Report _____
 Completion AUG 18 1950

Remarks _____

Spudding Date _____

Drlg. Data D & A TD 3436
12" @ 910 8" @ 1706 7" @ 2450

Chat. 3020 Miss. 3060 B Miss. 2317

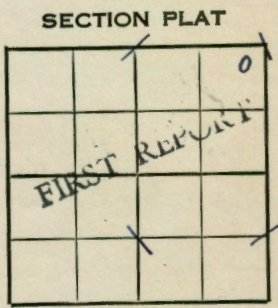
Arb. 3392 TD 3436 D & A

J. E. TYRA

Map No. _____ Sec. 35 Twp. 34 R. 6E
 Well No. 1 Jude

Murfin _____ Company
 _____ Contractor

NE NE NE
330 Ft. from N. Line
 _____ Ft. from S. Line
330 Ft. from E. Line
 _____ Ft. from W. Line



Cowley

Location _____
 Rig up _____
 Drilling and Remarks:

RECORD
 Cased _____ in., _____ ft.
 Sand _____
 Gas _____
 Oil _____
 Total Depth _____

PRODUCTION
 1st 24 hrs. Nat. _____
 1st 24 hrs. after shot _____
 Gas _____ Cu. Ft.
 Dry Hole _____
 Abandoned _____

Date MAY 17 1950.19

J. E. TYRA
J. E. TYRA Scout
J. E. TYRA