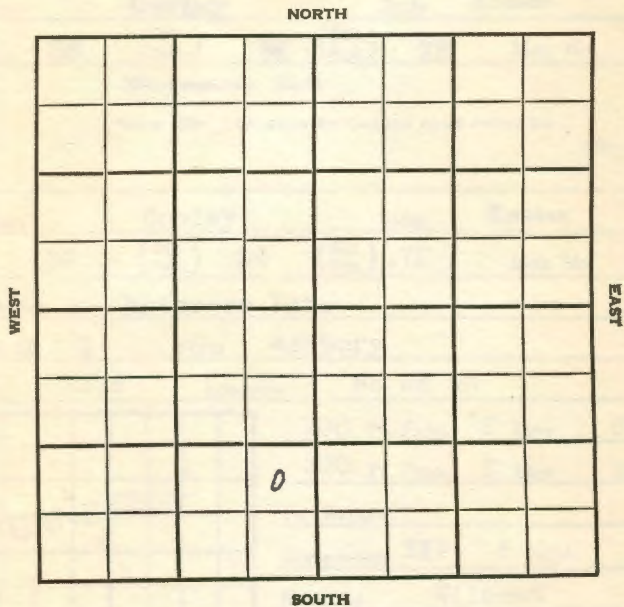


KANSAS

Section 36 Township 34 Range 7E

Well No. #1 Asbury

Company Musgrove Pet.



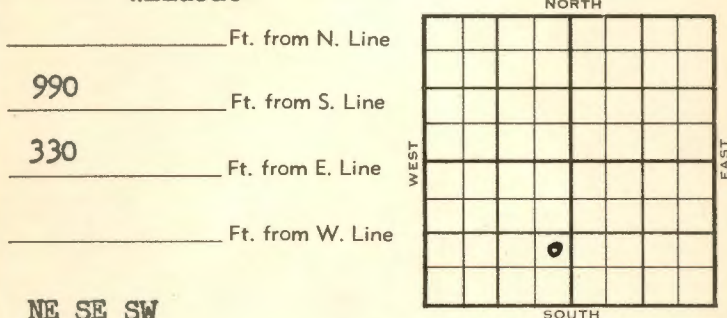
SOUTH

SEC. 36	TWP. 34	R. 7E
---------	---------	-------

WELL NO. 1 Asbury FARM

COMPANY Musgrove Pet.

CONTRACTOR Musgrove Wildcat



990 Ft. from N. Line

330 Ft. from S. Line

Ft. from E. Line

Ft. from W. Line

NE SE SW

1954	ELEVATION 1215'	REPORT
------	-----------------	--------

8/11 Spdg 8-4-54  
8" @ 103  
Drlg 1575

9/8 Spud 8-4-54 - Abd.  
TD 2797'  
8" @ 103'  
Stal. 1648', Layton 1820', KC 2314'  
DST 2397-2410', opn 1 hr., rec. 60' gas, 35' socm, 170#  
Burg. 2733', Miss 2737'  
DST 2733-50', opn 1 hr., rec. 800' gas, 37' hocm, 170#  
TD 2797'  
5" @ 2796'  
CO to 2780'  
42/2765-72, 72/2740-52, 12/2734-36,  
5/9 go 13 hrs., SP 2707 frac  
sd-frac, S/30 bop S/1/2 boph, 90/2397-2412, S/4 gfph 4 hrs., 3000A S/10 bfph  
Temp. abd.

ABANDONED

