

**KANSAS DRILLERS LOG**

S. 3 T. 35 R. 19 E XV

API No. 15 — 099 — 20,658  
 County Number

Loc. NW NE

County Labette

Operator  
Lightning Oil Company

Address  
Box 6598 San Antonio, Texas 78209

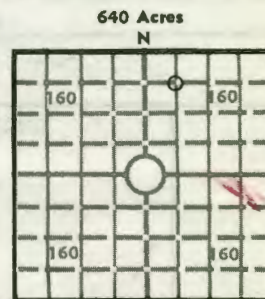
Well No. # 1 Lease Name D. J. McAtee

Footage Location  
660 feet from (N)  line 1980 feet from (E)  line

Principal Contractor Nance Drilling Company Geologist John W. Stewart

Spud Date October 16, 1977 Total Depth 725' P.B.T.D.

Date Completed November 16, 1977 Oil Purchaser



Locate well correctly  
 Elev.: Gr. 963

DF KB

**CASING RECORD**

Report of all strings set — surface, intermediate, production, etc.

Purpose of string	Size hole drilled	Size casing set (in O.D.)	Weight lbs/ft.	Setting depth	Type cement	Sacks	Type and percent additives
Surface casing	9-5/8	7"	used	40'	common	6	None
Production	6-1/4	2-7/8"	6.5	725'	common	105	None

**LINER RECORD**

**PERFORATION RECORD**

Top, ft.	Bottom, ft.	Sacks cement	Shots per ft.	Size & type	Depth interval
			2	1-11/16 ceramic	707-709
			2	1-11/16 ceramic	710-712

**TUBING RECORD**

Size	Setting depth	Packer set at

**ACID, FRACTURE, SHOT, CEMENT SQUEEZE RECORD**

Amount and kind of material used	Depth interval treated
450 gal. 15% acid with 50 gal. acetic	707-709 and 710-712

**INITIAL PRODUCTION**

MAR 30 1978

Date of first production	Producing method (flowing, pumping, gas lift, etc.) Flowing too much water to gauge gas		
RATE OF PRODUCTION PER 24 HOURS	Oil 0 bbls.	Gas Estimated 268 MCF	Water Estimated 55 bbls.
Disposition of gas (vented, used on lease or sold) Shut-in		Gas-oil ratio CFPB	
		Producing interval (s) 707-709 and 710-712	

INSTRUCTIONS: As provided in KCC Rule 82-2-125, within 90 days after completion of a well, one completed copy of this Drillers Log shall be transmitted to the State Geological Survey of Kansas, 4150 Monroe Street, Wichita, Kansas 67209. Copies of this form are available from the Conservation Division, State Corporation Commission, 3830 So. Meridian (P.O. Box 17027), Wichita, Kansas 66217. Phone AC 316-522-2206. If confidential custody is desired, please note Rule 82-2-125. Drillers Logs will be on open file in the Oil and Gas Division, State Geological Survey of Kansas, Lawrence, Kansas

Operator Lightning Oil Company

DESIGNATE TYPE OF COMP.: OIL, GAS, DRY HOLE, SWDW, ETC.: Gas

Well No. 1

Lease Name D. J. McAtee

S 3 T 35 R 19 E

WELL LOG

Show all important zones of porosity and contents thereof; cored intervals, and all drill-stem tests, including depth interval tested, cushion used, time tool open, flowing and shut-in pressures, and recoveries.

SHOW GEOLOGICAL MARKERS, LOGS RUN, OR OTHER DESCRIPTIVE INFORMATION.

FORMATION DESCRIPTION, CONTENTS, ETC.	TOP	BOTTOM	NAME	DEPTH
Clay and Gray Shale	0	40	Gamma-Neutron	Surface-TD
Sand, gray	40	60		
Shale, gray	60	77		
Limestone, tan, dense	77	115		
Shale, black	115	118		
Limestone, tan, dense	118	150		
Sandstone, tan, dead oil stain	150	171		
Shale, gray, silty	171	250		
Sandstone, gray	250	260		
Shale, gray	260	272		
Limestone, brown	272	274		
Shale, black, gas show in top	274	338		
Limestone, brown, dense	338	340		
Sandstone, white	340	350		
Shale, gray, brittle	350	460		
Sandstone, gray, dead oil stain	460	518		
Shale, black, pyritic toward base	578	707		
Top Mississippian				
Limestone, tan-gray, pinpoint porosity flowed gas	707	725		

USE ADDITIONAL SHEETS, IF NECESSARY, TO COMPLETE WELL RECORD.

Date Received

*John W. Stewart*  
Signature

*Geologist*  
Title

*28-Mar-78*  
Date