

S O & G. MCLAUGHLIN 1  
SUMNER CO., KANS.

SEC. 1 35S 2E  
BARTLESVILLE SAND



Sinclair Oil & Gas Company McLaughlin Well #1

SW SW NE Sec. 1-3  
Hilltop Field  
Sumner County, Kan.

Smitherman Drlg.

Conn: 1-14-55

Comp: 2-9-55

Casing Records: 117' of ?  
3533' of 5 1/2" with 150 Sx.

T.D. 3533'

Sj. tops: Layton 2808 (-1598)  
Kansas City 2998 (-1786)  
Oswego 3271 (-2004)  
Bartlesville 3516 (-2306)  
Mississippi Chat 3528 (-2318)

All measurements are Sj, zeroed on ground level.

Layton Sandstone 2808 (-1598). 15' lower than Layton production, 1 mile NW. Gray, fine grained, micaceous sandstone; good porosity; no odor, no stain, no fluorescence.

Bartlesville Sandstone 3516 (-2306). 5' higher than south offset, Bartlesville producer.

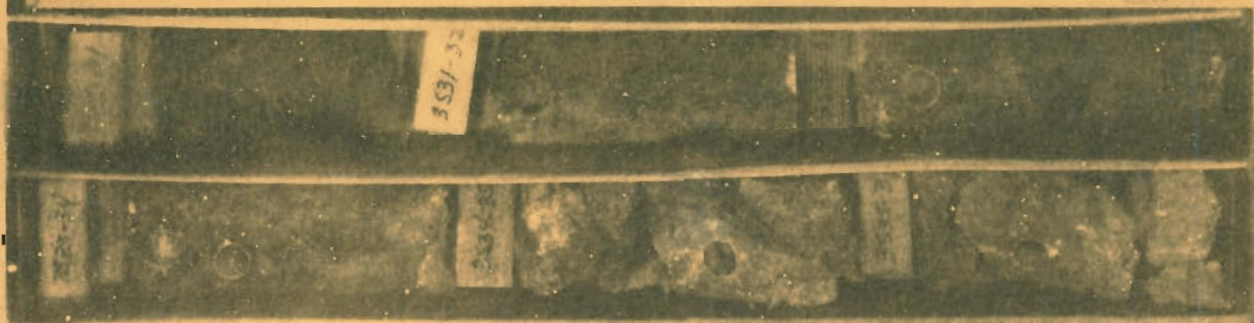
Diamond Core 3498' to 3534', recovered 36 ft.; 18' shale, gray to black, partly sandy, 3' stone, gray, fine grained, very shaly, poor porosity, no odor, fair fluorescence. 8' shale and sandstone, interbedded, sandstone shows poor porosity with slight 1' shale, gray, solid, 6' Conglomeratic Chat, (Miss.), white & gray chert fragments in a gray green shale matrix, no visible porosity, no show.

Mississippi Chat 3528.

T.D. 3533. Set 5 1/2" casing at 3533' with 150 sacks pozmix.

S O & G. MCLAUGHLIN 1  
SUMNER CO., KANS.

SEC. 1 35S 2E  
MISSISSIPPI SAND



LAWRENCE SET

SO&G

#1 L. M. McLaughlin

1-35-2E

Sumner

SW-SW-NE

2 Boxes

Nos. 6-7

Elevation: 1219

Completed: 1/55

Bartlesville & Miss.

Depth--3518-3536

Tops

Bartlesville : 3516

Mississippian lime : 3528

TD : 3533

---