

WICHITA BRANCH
WELL COMPLETION REPORT AND
DRILLER'S LOG

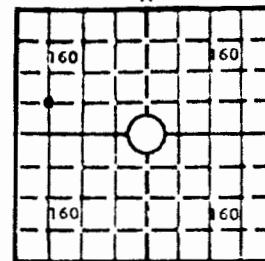
API No. 15 — 191 County — 20,891 Number

S. 10 T. 35 R. 2 ^W EAST

Loc. C SW NW

County Sumner

640 Acres
N



Elev.: Gr. _____

DF _____ KB _____

Operator
Harman Drilling Company, Inc.

Address
P. O. Box 796 Blackwell, Okla. 74631

Well No. 1 Lease Name McLaughlin

Footage Location
660 feet from (N) (S) line 660 feet from (E) (W) line

Principal Contractor Harman Drilling Co., Inc. Geologist S. A. Crank

Spud Date 4/16/79 Date Completed 4/17/79 Total Depth 1145 P.B.T.D. _____

Directional Deviation _____ Oil and/or Gas Purchaser _____

CASING RECORD

Report of all strings set— surface, intermediate, production, etc.

Purpose of string	Size hole drilled	Size casing set (in O.D.)	Weight lbs/ft.	Setting depth	Type cement	Sacks	Type and percent additives
Surface	8 3/4	7"	23	98.49	Reg.	100	3% Cal Colr.
Production	6 1/2	2 7/8		950'	Reg.	200	10% salt 2.70 Gel.

LINER RECORD

PERFORATION RECORD

Top, ft.	Bottom, ft.	Sacks cement	Shots per ft.	Size & type	Depth interval
			2 shots	1 11/16 B 1 Wire	780-790

TUBING RECORD

ACID, FRACTURE, SHOT, CEMENT SQUEEZE RECORD

Amount and kind of material used	Depth interval treated
250 gal. mud acid, 3000 gal. Mod. 202 acid	

INITIAL PRODUCTION

Date of first production _____ Producing method (flowing, pumping, gas lift, etc.)
Gas Flowing

RATE OF PRODUCTION PER 24 HOURS
Oil None bbls. Gas 300 M. Est. Water show Gas-oil ratio Gas CFPB
315 # shutin MCF bbls.

Disposition of gas (vented, used on lease or sold) Vented Producing interval(s) _____

INSTRUCTIONS: As provided in KCC Rule 82-2-125, within 90 days after completion of a well, one completed copy of this Drillers Log shall be transmitted to the State Geological Survey of Kansas, 4150 Monroe Street, Wichita, Kansas 67202. Copies of this form are available from the Conservation Division, State Corporation Commission, 245 No. Water, Wichita, Kansas 67202. Phone AC 316-522-2206. If confidential custody is desired, please note Rule 82-2-125. Drillers Logs will be on an open file in the Oil and Gas Division, State Geological Survey of Kansas, Lawrence, Kansas 66044.

Operator

Harman Drilling Co., Inc.

DESIGNATE TYPE OF COMP.: OIL, DRY HOLE, SWDW, ETC.:

Gas

Well No.

Lease Name

McLaughlin Beta 1

McLaughlin

S ___ T ___ R ___ E ___ W

WELL LOG

Show all important zones of porosity and contents thereof; cored intervals, and all drill-stem tests, including depth interval tested, cushion used, time tool open, flowing and shut-in pressures, and recoveries.

SHOW GEOLOGICAL MARKERS, LOGS RUN, OR OTHER DESCRIPTIVE INFORMATION.

FORMATION DESCRIPTION, CONTENTS, ETC.	TOP	BOTTOM	NAME	DEPTH
Lime			Neva	

USE ADDITIONAL SHEETS, IF NECESSARY, TO COMPLETE WELL RECORD.

Date Received


Signature

President

Title

August 17, 1979

Date

TOM CHANSEN COMPANY

GAMMA-RAY WITH CASHT BOND LOG

FIELD PRINT

CONTRACTOR: HARMAN DRILLING CO.
WELL: McLAUGHLIN - BETA #1
NEB. LICENSE: UNNAP19
COUNTY: Sumner **STATE:** KANSAS

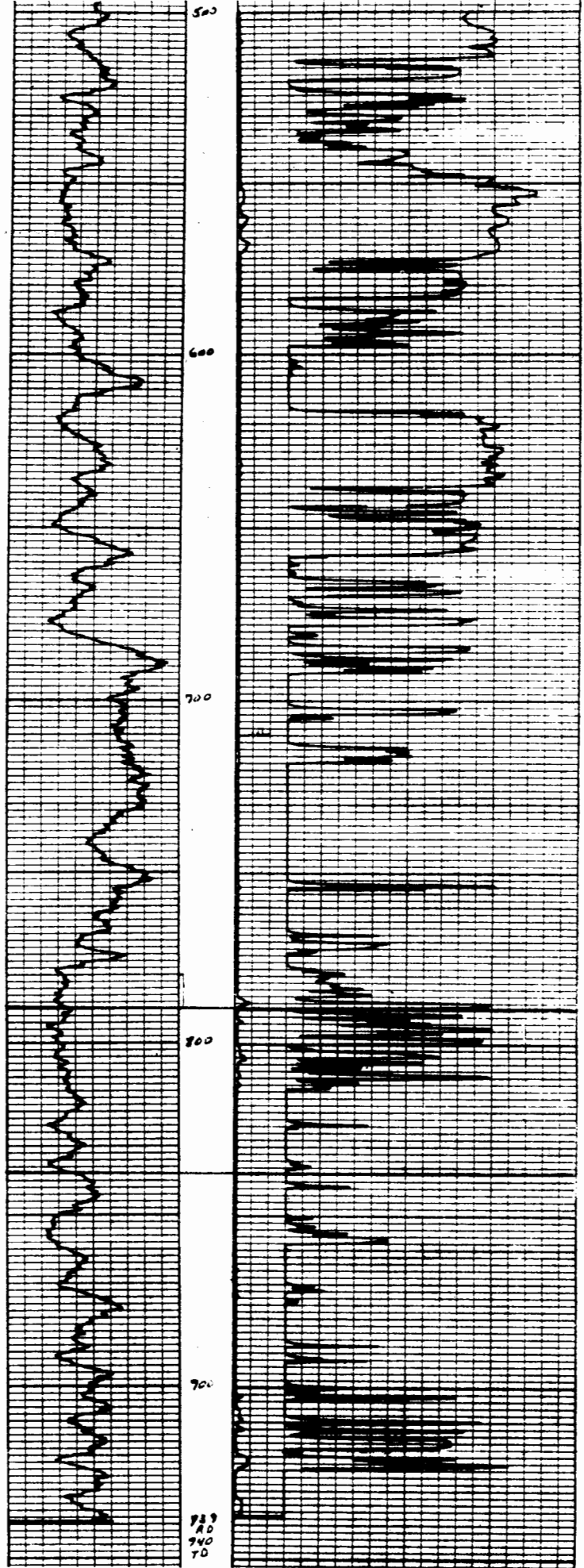
THANK YOU

LOCATION: C-SW-NW **OTHER SERVICE:** PIAS
SEC.: 10 **TWP.:** 35S **RGE.:** 2E

Permanent Datum: 64 **Dev.:** N/A **KB:** N/A
Log Measured From: K.A. **0** **ft. Above Perm Datum:** 0 **DF:** N/A
Drilling Measured From: K.A. **0**

Date	<u>4-23-79</u>
Run	<u>OK</u>
Type	<u>C/A - AAL</u>
Depth - Driller	<u>1145</u>
Depth - Logger	<u>940</u>
Bottom logged interval	<u>239</u>
Top logged interval	<u>100</u>
Type fluid in hole	<u>WATER</u>
Salinity, PPM Cl	
Density	
Mo. temp. Deg. F.	<u>64</u>
Operating rig time	<u>2:45</u>
Recorded by	<u>SPILL</u>
Witnessed by	<u>MR. HARMAN & MR. MARGRAW</u>

RUN No.	BORE-HOLE RECORD			CASING RECORD		
	Bit	From	To	Size	Wgt.	From To
				<u>2 7/8</u>		<u>5400 TO 70</u>



Specimen Gamma-Ray Field Log on gas well drilled in adjoining acreage to the proposed drilling sites in Sumner County, Kansas.

Drilling Contractor: Harman Drilling Co., Inc.
 Company: Reserve Exploration, Inc.
 Well: McLaughlin - Beta No. 1.
 Date: April 23, 1979.
 Total Depth: 1145 feet.
 Location: SW/4, NW/4, Sec. 10, TWP 35S, RGE 2E, Sumner County, Kansas.

The presence of the gas producing Neva Zone appears to be prevalent at a depth of 775 ft. to 875 ft. Completion activity included. Perforations at 782 ft. to 792 ft.

A gas line from the well site to the gathering system is being installed at this time.

The proposed Sumner County drilling sites of the Gamma 79 Project is located approximately 1/4 of a mile from this well (McLaughlin - Beta No. 1). See Exhibit "B".