

Section 13 Township 35 Range 2E

Well No. 1 Bowman

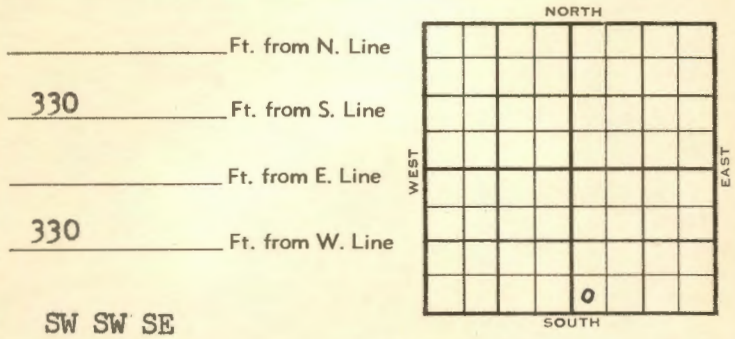
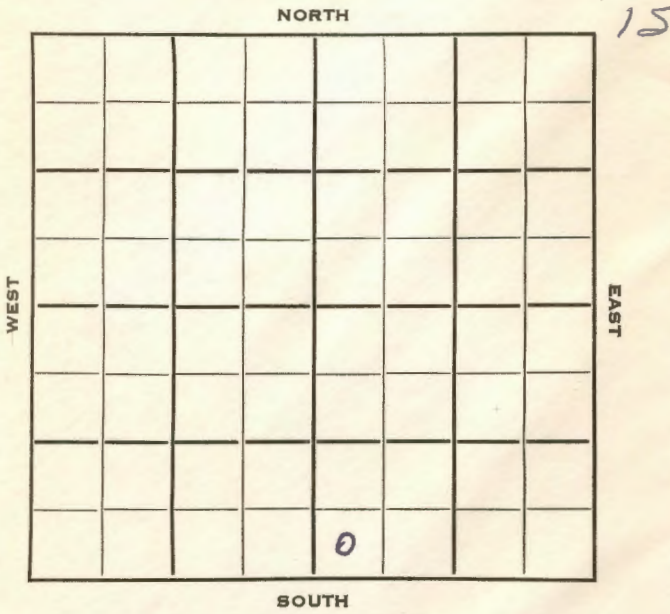
Company Royal Oil

SEC. 13 TWP. 35 R. 2E

WELL NO. 1 Bowman FARM

COMPANY Royal Oil

CONTRACTOR Prime Drlg.



	ELEVATION	REPORT
1954	1202'	

4/7 Spud 4-4-54  
8" @ 97'  
Drlg. 200'

5/5 Spud 4-4-54 Oil well ~~TD 3604~~  
TD 3604' 8" @ 97  
DST 2955-63 open 1 hr rec 70' SW  
24' drlg. mud. 935# Layton 2856  
Cleveland 3150 Bart. 3512  
TD 3604 5" @ 3599 84/3540-54 wtr.  
PB 3200 78/3169-82 3 GO 6 hr  
frac. F/11 BOPH 10% wtr.  
Comp. 30 BOPD 10% wtr.

**COMPLETED**

