

CORE ANALYSIS REPORT

FOR

PETRO-LEWIS CORPORATION  
POTTS NO. 1 WELL  
NEMAHA COUNTY, KANSAS

CORE LABORATORIES, INC.  
*Petroleum Reservoir Engineering*

OKLAHOMA CITY, OKLAHOMA

June 25, 1982

REPLY TO  
SUITE 133  
400 SOUTH VERMONT  
OKLAHOMA CITY, OK  
73108

Petro-Lewis Corporation  
Suite 370  
Three Corporate Plaza  
3613 N. W. 56th Street  
Oklahoma City, Oklahoma 73112

Attn: Mr. Mark Poppendeck

Subject: Core Analysis Data  
Potts No. 1 Well  
Nemaha County, Kansas  
CLI File 3402-11312

Gentlemen:

Cores taken in the subject well in the Viola Lime formation were received at the Oklahoma City laboratory for special analytical testing described on the Procedure Page.

The accompanying Coregraph presents the Surface Core-Gamma Log and binomially averaged core analysis data in graphical form to aid correlation with downhole electrical surveys.

Tabular presentation of the measured physical properties may be found on page one of this report.

Histograms of porosity and permeability in addition to a graph of permeability versus porosity may be found on pages two and three.

It is a pleasure to have this opportunity of serving you.

Very truly yours,

CORE LABORATORIES, INC.

*J. Michael Edwards*  
J. Michael Edwards *JA*  
District Manager

Petro-Lewis Corporation  
Potts No. 1 Well  
CLI File 3402-11312

Procedure Page

## Handling and Analytical Procedures

Diamond coring equipment and water base mud were used to obtain 3.0 inch diameter cores between 3,456.0 and 3,495.5 feet.

The cores were preserved at the well site in a CO<sub>2</sub> atmosphere by CLI personnel.

The cores were transported to Oklahoma City by CLI personnel.

A Core-Gamma Log was recorded for downhole electric log correlation.

Core analysis was made in the intervals requested on right cylinder full diameter samples.

Fluid removal was accomplished using vacuum retorts.

Porosity was determined by density balance method.

Air permeability in two horizontal directions and vertical direction was measured without Klinkenberg correction.

Temporary storage of cores in Oklahoma City laboratory for a period of thirty days without additional charge.

CORE LABORATORIES, INC.  
*Petroleum Reservoir Engineering*

OKLAHOMA CITY, OKLAHOMA

June 25, 1982

REPLY TO  
SUITE 133  
400 SOUTH VERMONT  
OKLAHOMA CITY, OK  
73108

Petro-Lewis Corporation  
Suite 370  
Three Corporate Plaza  
3613 N. W. 56th Street  
Oklahoma City, Oklahoma 73112

Attn: Mr. Mark Poppendeck

Gentlemen:

Core Laboratories, Inc., Oklahoma City, has previously provided core storage space at no charge to our clients. During the last year our need for space became acute and many clients have been forced to rent storage in "mini-storage" warehouses. However, these spaces are expensive, difficult to maintain, and have limited accessibility.

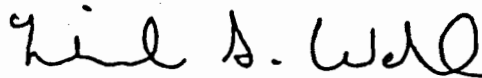
In an effort to solve these problems, we are instituting a new core storage program effective May 1, 1982. Additional space adjoining our present facility has been leased and prepared specifically for core storage. There will be a monthly charge for handling, maintenance and storage based on the amount of core involved.

Please contact us within 30 days of receiving your final report so that we may make arrangements to store your core, ship it to another location or donate it to one of the university geological surveys.

We believe this program will eliminate most of the problems associated with core storage and enable us to serve our clientele more efficiently in the future. If you have any questions regarding this program, please do not hesitate to contact us (405-946-5422).

Very truly yours,

CORE LABORATORIES, INC.



Michael S. Wahl  
Laboratory Supervisor

PETRO-LEWIS CORPORATION  
 POTTS NO. 1 WELL  
 NEMAHA COUNTY, KANSAS

DATE: 6-25-82  
 FORMATION: VIOLA LIME  
 DRLG. FLUID: WATER BASE MUD  
 LOCATION: SE/4 SE/4 SEC. 7-4S-14E

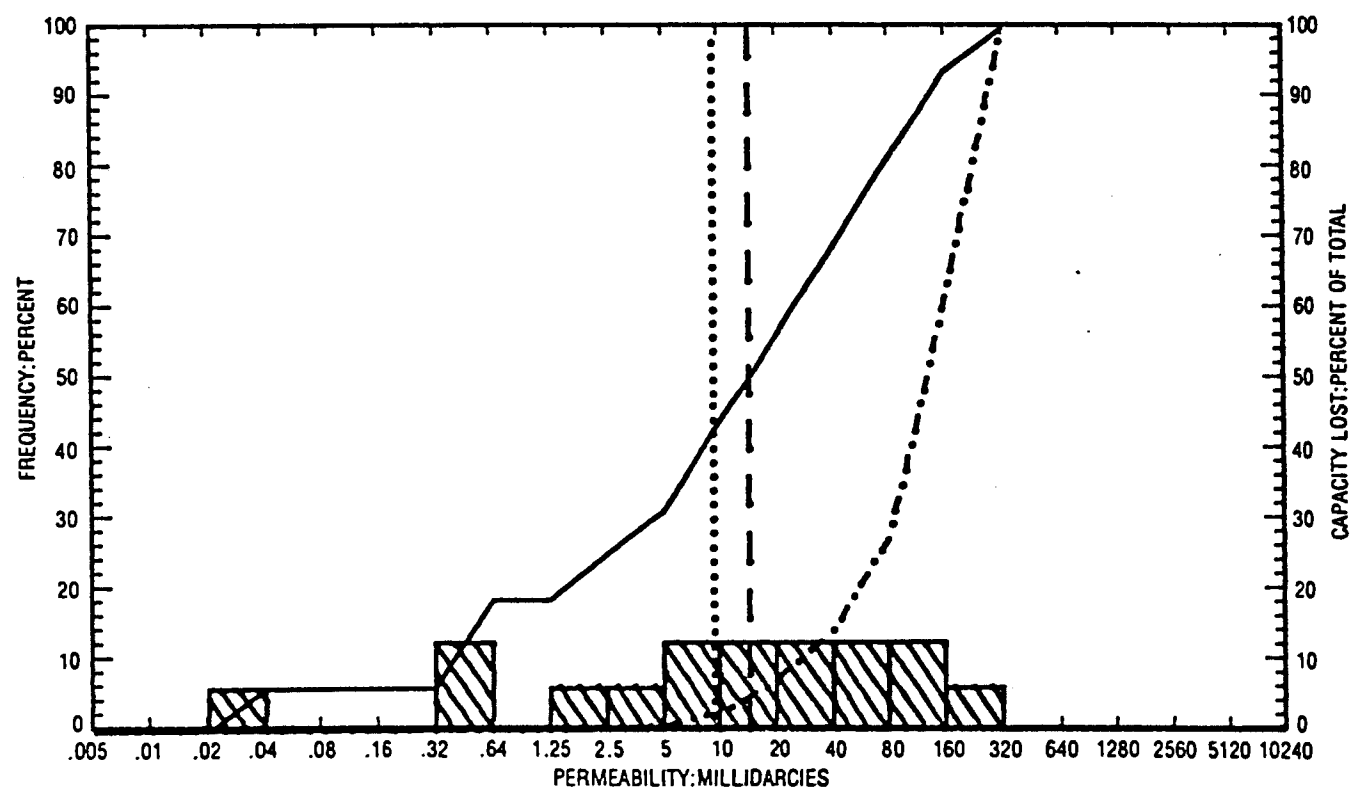
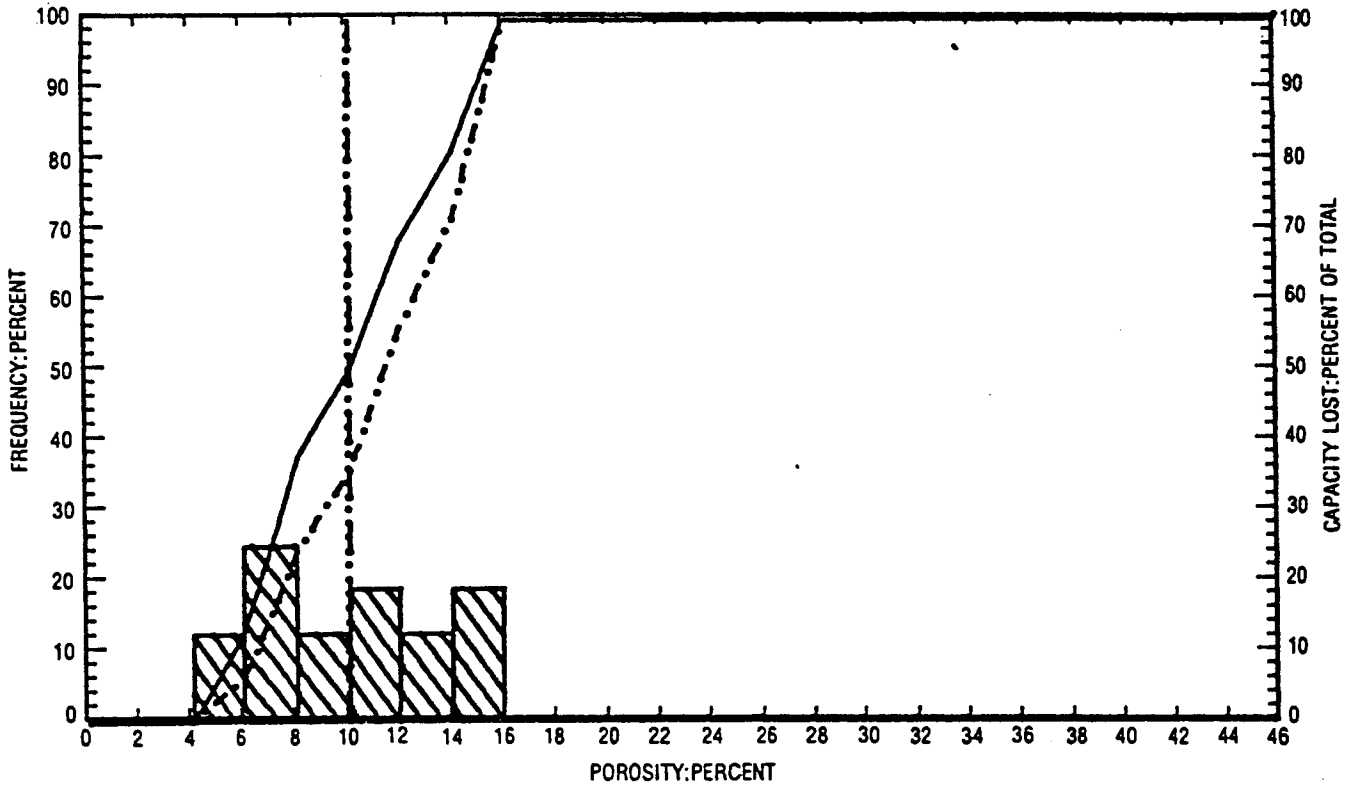
FILE NO: 3402-11312  
 ANALYST: EDWARDS  
 LABORATORY: OKLAHOMA CITY

FULL DIAMETER ANALYSIS

SMP. NO.	DEPTH FEET	MAXIMUM PERM. TO AIR MD. 90 DEG.	VERTICAL	POROSITY PERCENT	FLUID OIL	SATS. WATER	GRAIN DEN.	DESCRIPTION
1	3456.0-57.0	278	71	14.0	22.4	58.2	2.83	DOL, VGY
2	3457.0-58.0	159	146	12.3	17.0	62.2	2.82	DOL, VGY
3	3458.0-59.0	42	0.05	15.8	22.2	59.0	2.84	DOL, VGY
4	3459.0-60.0	38	0.04	7.3	12.2	69.4	2.83	DOL, VGY
5	3460.0-61.0	4.70	0.05	5.2	13.3	76.9	2.84	DOL, VGY, STY
6	3461.0-62.0	137	24	8.5	12.3	70.9	2.84	DOL, VGY
7	3462.0-63.0	310	3.00	12.1	13.6	68.3	2.85	DOL, VGY, VF
8	3463.0-64.0	123	3.60	9.3	7.0	71.6	2.82	DOL, VGY
9	3464.0-65.0	11	0.14	6.8	8.0	68.0	2.83	DOL, VGY, STY
10	3465.0-66.0	33	0.50	7.8	1.2	71.0	2.84	DOL, VGY, STY
11	3466.0-67.0	12	1.60	10.8	0.0	70.1	2.83	DOL, VGY, STY
12	3467.0-68.0	1.10	0.03	5.1	0.0	80.1	2.84	DOL, VGY, STY
13	3468.0-69.0	8.30	0.06	6.3	0.0	74.3	2.85	DOL, VGY, SL/SHY
14	3469.0-70.0	19	5.80	11.4	0.0	79.4	2.85	DOL, VGY, SL/SHY
15	3470.0-71.0	44	4.10	11.1	0.0	76.4	2.85	DOL, VGY, SL/SHY
16	3471.0-72.0	0.08	0.05	15.3	0.0	79.2	2.83	DOL, VGY, SL/CHRT
	3472.0-95.5							LM

+ DENOTES HORIZONTAL CRACKS

These analyses, opinions or interpretations are based on observations and materials supplied by the client to whom, and for whose exclusive and confidential use, this report is made. The interpretations or opinions expressed represent the best judgment of Core Laboratories, Inc. (all errors and omissions excepted); but Core Laboratories, Inc. and its officers and employees, assume no responsibility and make no warranty or representations, as to the productivity, proper operations, or profitability of any oil, gas or other mineral well or sand in connection with which such report is used or relied upon.

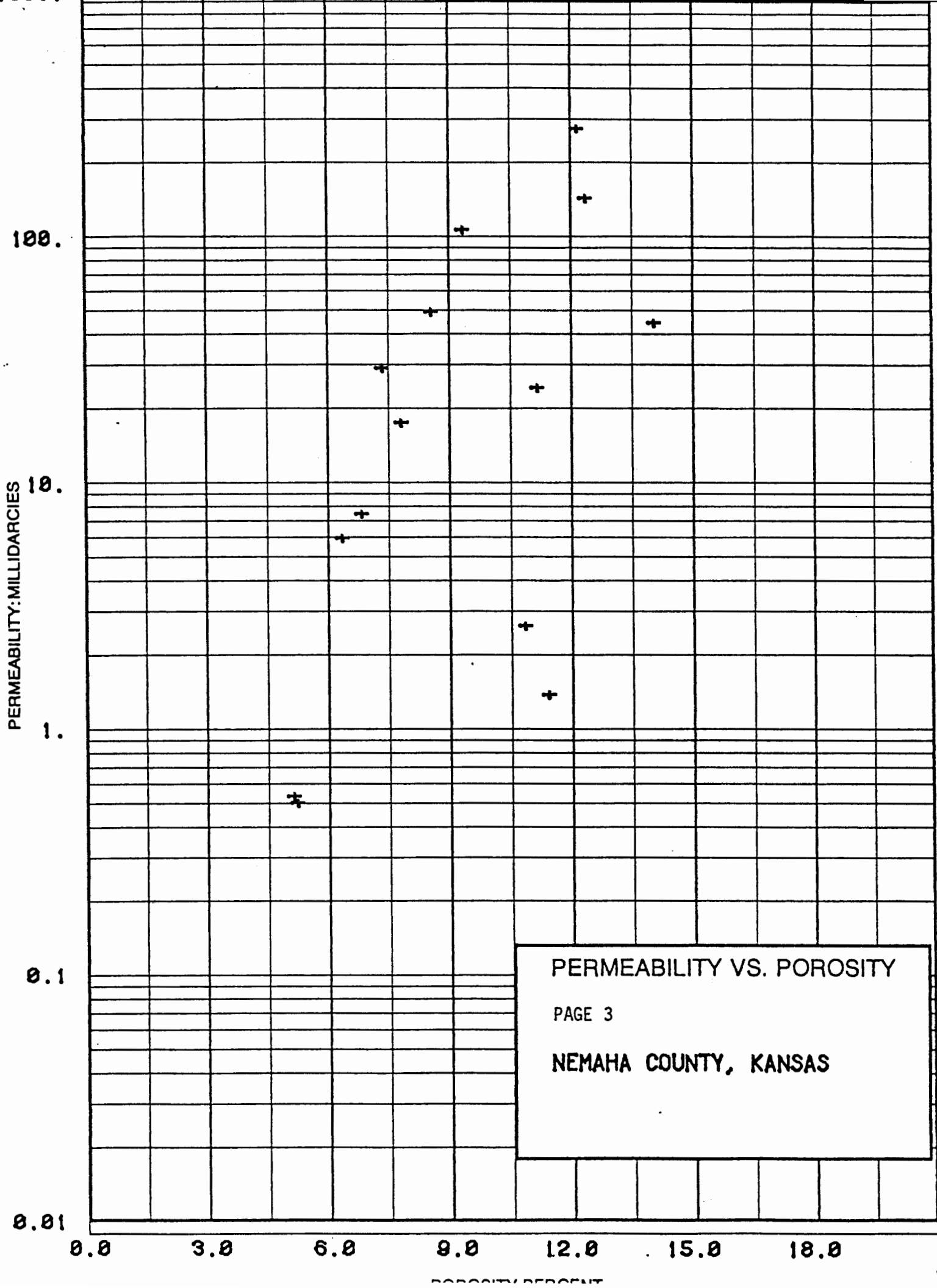


PERMEABILITY AND POROSITY HISTOGRAMS PAGE 2

PETRO-LEWIS CORPORATION  
 POTTS NO. 1 WELL  
  
 NEMAHA COUNTY, KANSAS

LEGEND

ARITHMETIC MEAN POROSITY	.....
GEOMETRIC MEAN PERMEABILITY	.....
MEDIAN VALUE	-----
CUMULATIVE FREQUENCY	————
CUMULATIVE CAPACITY LOST	- - - - -



DISTRIBUTION OF FINAL REPORT -

PETRO-LEWIS CORPORATION  
POTTS NO. 1 WELL  
Nemaha County, Kansas  
CLI File 3402-11312

- 4 cc - PETRO-LEWIS CORPORATION  
Attn: Mr. Mark Poppendeck  
Suite 370  
Three Corporate Plaza  
3613 N. W. 56th Street  
Oklahoma City, Oklahoma 73112
- 8 cc - STONE PETROLEUM CORPORATION  
Attn: Mr. Brad Katzung  
1620 Mid-America Tower  
20 North Broadway  
Oklahoma City, Oklahoma 73102
- 2 cc - PENDLETON LAND & EXPLORATION, INC.  
Attn: Mr. Forest Woodside  
23 Inverness Way East  
Inglewood, Colorado 80112
- 6 cc - RESOURCES INVESTMENT CORPORATION  
Attn: Mr. Paris Amond  
3500 Anaconda Tower  
555 17th Street  
Denver, Colorado 80202