

# GEOLOGIC REPORT

# DAVID J. GOLDAK

WICHITA, KANSAS  
Scale 1:240 (5"=100') Imperial  
Measured Depth Log

Well Name: MGPI Processing #1  
Well Id: KS-01-005-001  
Location: Section 01 - T6S - R20E  
License Number: KS-01-005-001  
Spud Date: 10 / 15 / 2023  
Surface Coordinates: 2543' FNL and 2230' FWL  
39.558666, -95.131491  
Bottom Hole Coordinates:  
Ground Elevation (ft): 822' K.B. Elevation (ft): 833'  
Logged Interval (ft): 68' To: 2916' Total Depth (ft): 2916'  
Formation: at TD: Arbuckle  
Type of Drilling Fluid: Chemical - Franklin Mud Co

Region: Atchison Co., KS  
Drilling Completed: 11 / 06 / 2023

Printed by MudLog from WellSight Systems 1-800-447-1534 [www.WellSight.com](http://www.WellSight.com)

## OPERATOR

Company: SCS Engineers  
Address: 11120 E 26th St N  
Wichita, Kansas 67226

## GEOLOGIST

Name: David J. Goldak  
Company: D. J. GOLDAK, INC.  
Address: 12427 W Ridgepoint Cir  
Wichita, Kansas 67235

## General Information

**CONTRACTOR:** Sterling Drilling, Rig #4

### BIT RECORD:

No.	Size	Make	Jets	Out	Feet	Hours
1	17.50	Security-503SF	3-16s	250'	185'	4.75
2	12.25	Security-5584FD	3-16s	1396'	1146'	37.00
3	12.25	Smith-F27	3-16s	1984'	588'	46.50
4	12.25	Security-5584FD	3-16s	2476'	492'	33.50
5	7.625	HTC-FA537G	3-16s	2486'	10'	0.50
6	7.625	Smith-MI616	6-14s	2916'	370'	10.50

**SURVEYS:** 250'-0.80, 726'-0.90, 1269'-0.60, 1779'-0.80, 2476'-0.75, 2916'-0.75

### GENERAL DRILLING AND PUMP INFORMATION:

Drilling from 250' to 1,396':

Collars: 13 Jts - 8"x2.75": 369.43'

Collars: 4 Jts - 6.5"x2.25": 124.40'

Drilling with 40,000-50,000 lbs. on bit and 40-50 RPM.

Drilling from 1,396' to 2,476':

Collars: 13 Jts - 8"x2.75": 369.43'

Collars: 6 Jts - 6.5"x2.25": 186.60'

Drilling with 40,000-50,000 lbs. on bit and 40-50 RPM.

Drilling from 2,476' to RTD

Collars: 19 Jts - 6.5"x2.25": 590.63'

Drilling with Conv bit: 40,000 lbs on bit and 50-60 RPM.

Drilling with PDC bit: 10,000-12,000 lbs on bit and 75-80 RPM.

Pumping 50-65 S/M, 7.35-9.56 B/M, and 500-800 psi at standpipe.

## Daily Status

08/30/23 - Set 20" conductor @ 54' GL, 65' KB

10/15/23 - Spud @ 9:05 AM; Set 13.375" csg @ 245'; PD @ 10:00 PM

10/16/23 - 250' WOC; DP @ 2:15 PM

10/17/23 - 695' Drilling

10/18/23 - 1,300' Drilling; Bit trip @ 1,396'

10/19/23 - 1,536' Drilling

10/20/23 - 1,811' CTCH after wiper trip; Core 1,811'-1,841'; Ream 12.125" to 1,841'

10/21/23 - 1,925' Drilling; Lost circ @ 1,971'; Add LCM pills; Dry drill to 1,984' and WO cem serv co

10/22-10/25 - 1,984' Spot cem 8 times, total of 730 sx; No returns

10/26/23 - 1,984' WO cem serv co; Squeeze w/ 400 sx cem

10/27/23 - 1,984' WOC; Drill w/ 50%-80% returns; Build vol & LCM; Drill w/ 40% returns

10/28/23 - 2,013' WO cem serv co; Squeeze w/ 75 sx cem; Drilling w/ full returns

10/29/23 - 2,079' Drilling

10/30/23 - 2,382' Drilling; Log well @ 2,476'

10/31/23 - 2,476' Set 8.625" csg @ 2,470'; PD @ 2:45 PM; Cem 2nd stage @ 2:30 AM (11/01)

11/01/23-11/03/23 - 2,476' WOC

11/04/23 - 2,476' Drill out DV tool & tag bottom plug; Run bond log; DP @ 1:30 AM (11/05)

11/05/23 - 2,486' TIH with coring tools; Core 2,486'-2,516'; Core 2,516'-2,546'

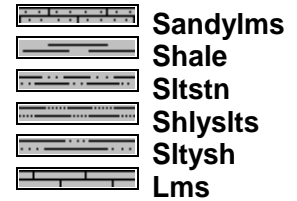
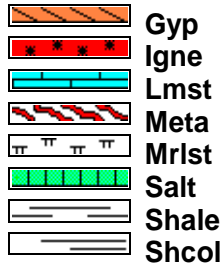
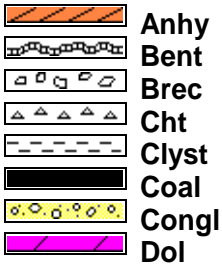
11/06/23 - 2,704' Drilling; RTD 2,916'; Log well in PM

### Log Tops

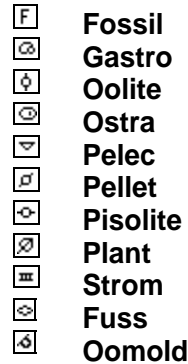
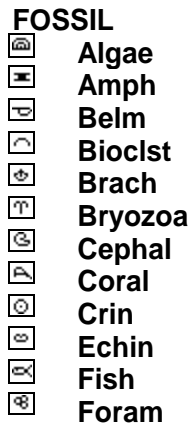
### Sample Tops

Lansing	252 (+ 581)	257 (+ 576)
Stark Sh	517 (+ 316)	520 (+ 313)
Base of KC	567 (+ 266)	571 (+ 262)
Marmaton	686 (+ 147)	690 (+ 143)
Cherokee Sh	776 (+ 57)	779 (+ 54)
Mississippian	1391 (- 558)	1393 (- 560)
Kinderhook / Chattanooga	1777 (- 944)	1781 (- 948)
Hunton	1893 (-1060)	1896 (-1063)
Maquoketa	2130 (-1297)	2134 (-1301)
Viola	2203 (-1370)	2205 (-1372)
Simpson	2369 (-1536)	2371 (-1538)
Arbuckle	2463 (-1630)	2466 (-1633)
Intermediate TD	2474 (-1641)	2476 (-1643)
Total Depth	2916 (-2083)	2916 (-2083)

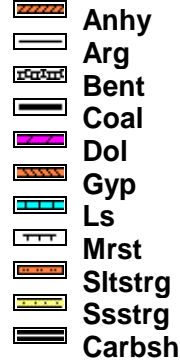
### ROCK TYPES



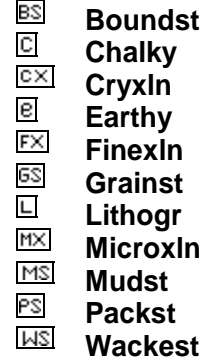
### ACCESSORIES



### STRINGER



### TEXTURE



### OTHER SYMBOLS

#### POROSITY TYPE

- E Earthy
- F Fenest
- F Fracture
- X Inter
- / Moldic
- O Organic
- P Pinpoint
- V Vuggy

#### SORTING

- W Well
- M Moderate
- P Poor

#### ROUNDING

- R Rounded
- r Subrnd
- a Subang
- A Angular

#### OIL SHOWS

- Even
- ◉ Spotted
- ◻ Ques
- ◻ Dead
- ⊠ Gas show

#### INTERVALS

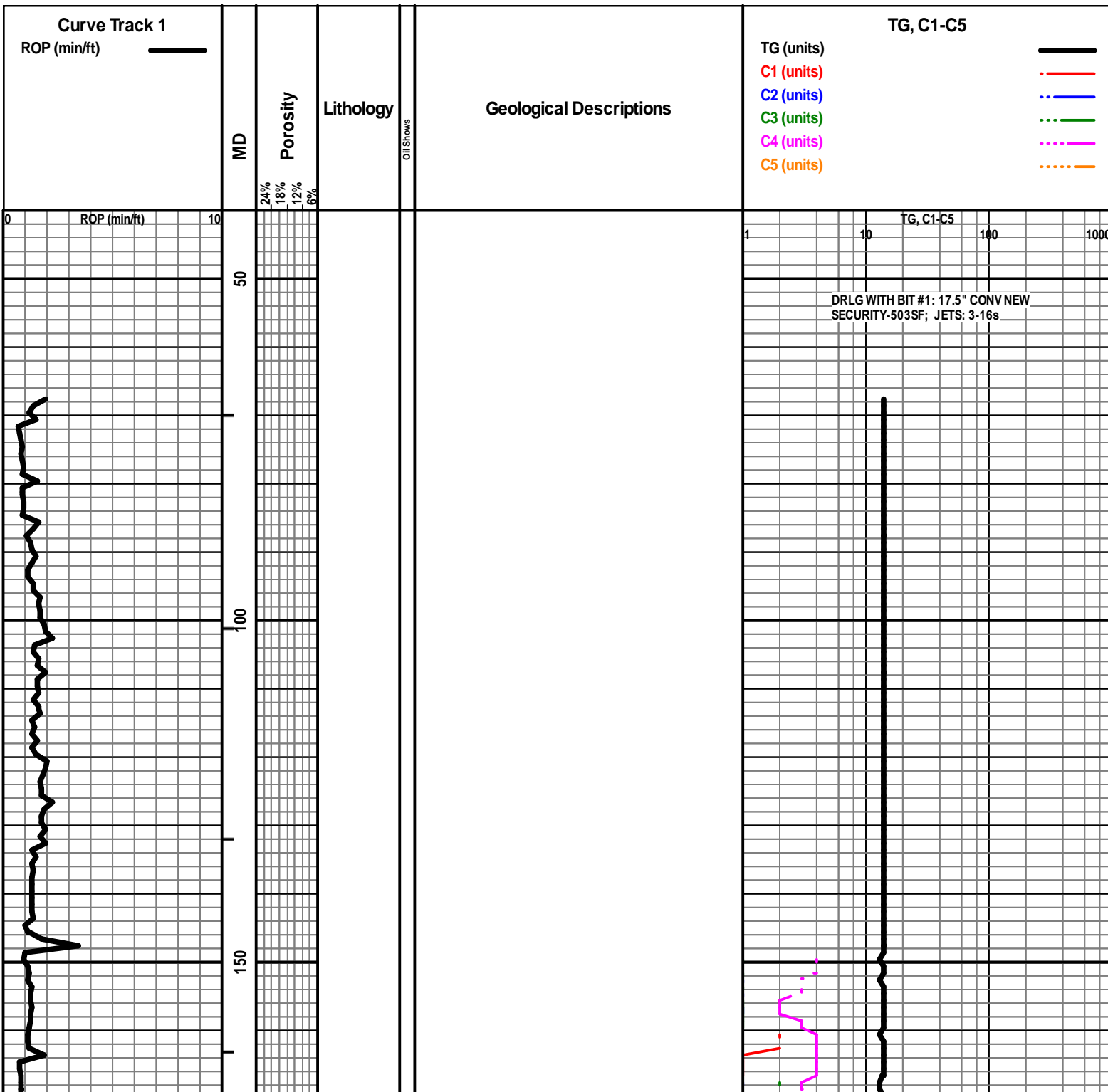
- Core
- ◻ Dst

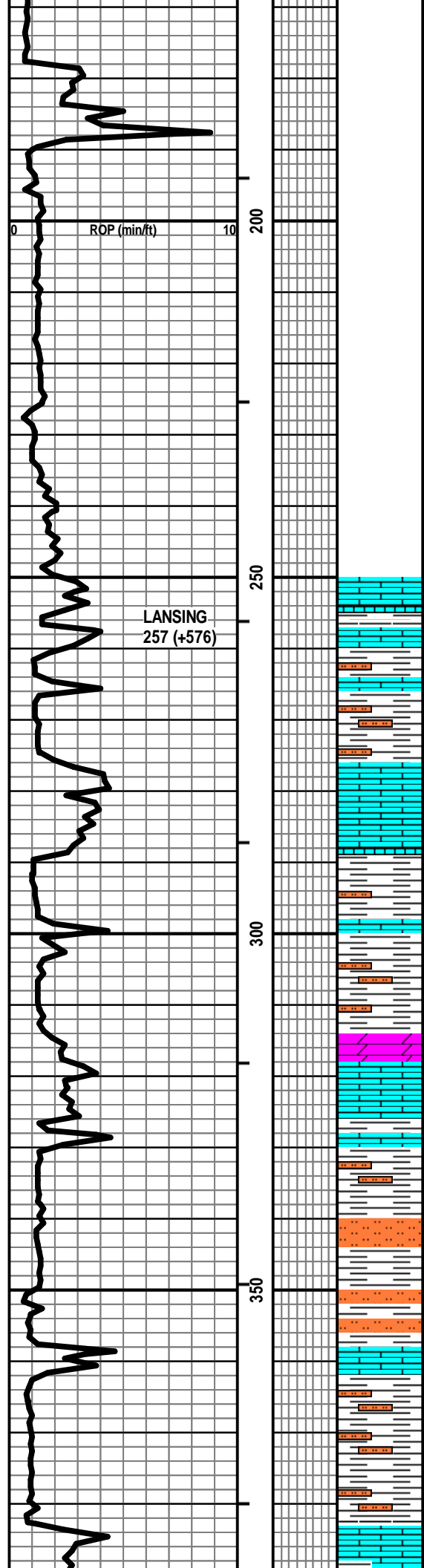
- Dst/2
- Dst

#### EVENTS

- ▽ Rft
- ▾ Sidewall
- ▬ Conn

### DSTs





**POOR SAMPLE QUALITY**

LS - TAN / GY, MOT IN PT, F XLN, OOL, PRED DNS W/LS - CRM / WHT / TAN, F XLN, SCAT REXLN CALC, PRED DNS W/ SH - GY, SLTY IN PT

LS - CRM / WHT, AS ABOVE CHKY IN PT / DNS W/ SCAT SH - DK GY

SH - MED GY, SLTY IN PT W/ DOLO - LT GY, F XLN, LMY IN PT, NO / P VIS POR W/ LS - TAN / BRN / GY, MOT IN PT, F XLN, FOSS, DNS

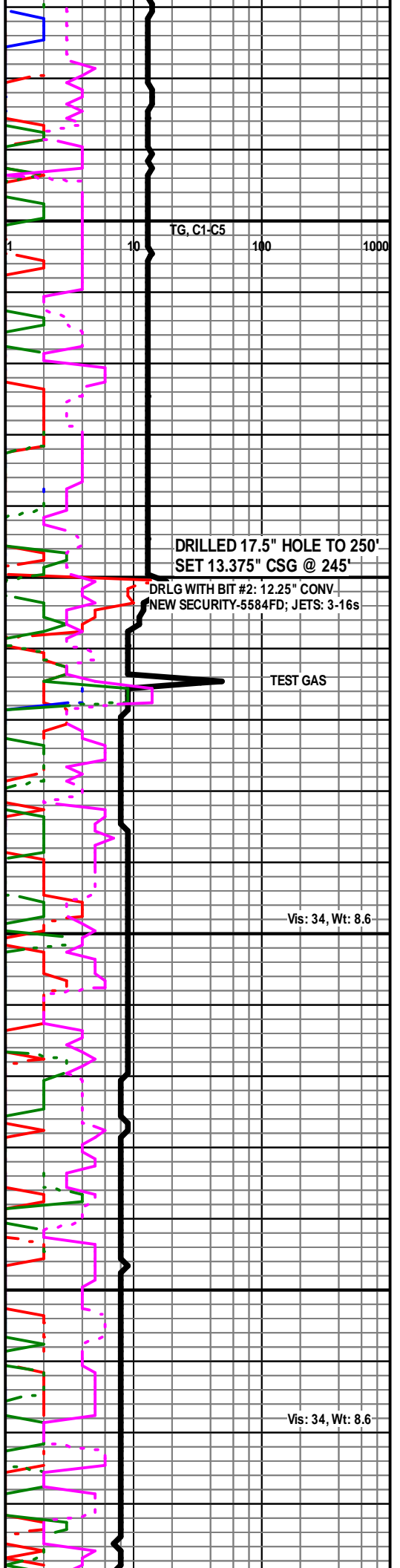
LS - GY / TAN, MOT IN PT, AS ABOVE W/ LS - CRM / TAN, F / M XLN, FOSS IN PT, PRED DNS W/ SH - LT / MED GY

**FAIR / GOOD SAMPLE QUALITY**

SLTST - LT GY W/ SH - LT / MED GY, SLTY IN PT

LS - CRM / TAN / SCAT WHT, MOT IN PT, F XLN, V OOL, PRED DNS W/ SH - DK GY, CALC, OOL W/ SH - LT GY, SLTY

LS - GY / SCAT TAN, F XLN, SHLY IN PT W/ SH - MED GY, V CALC IN PT



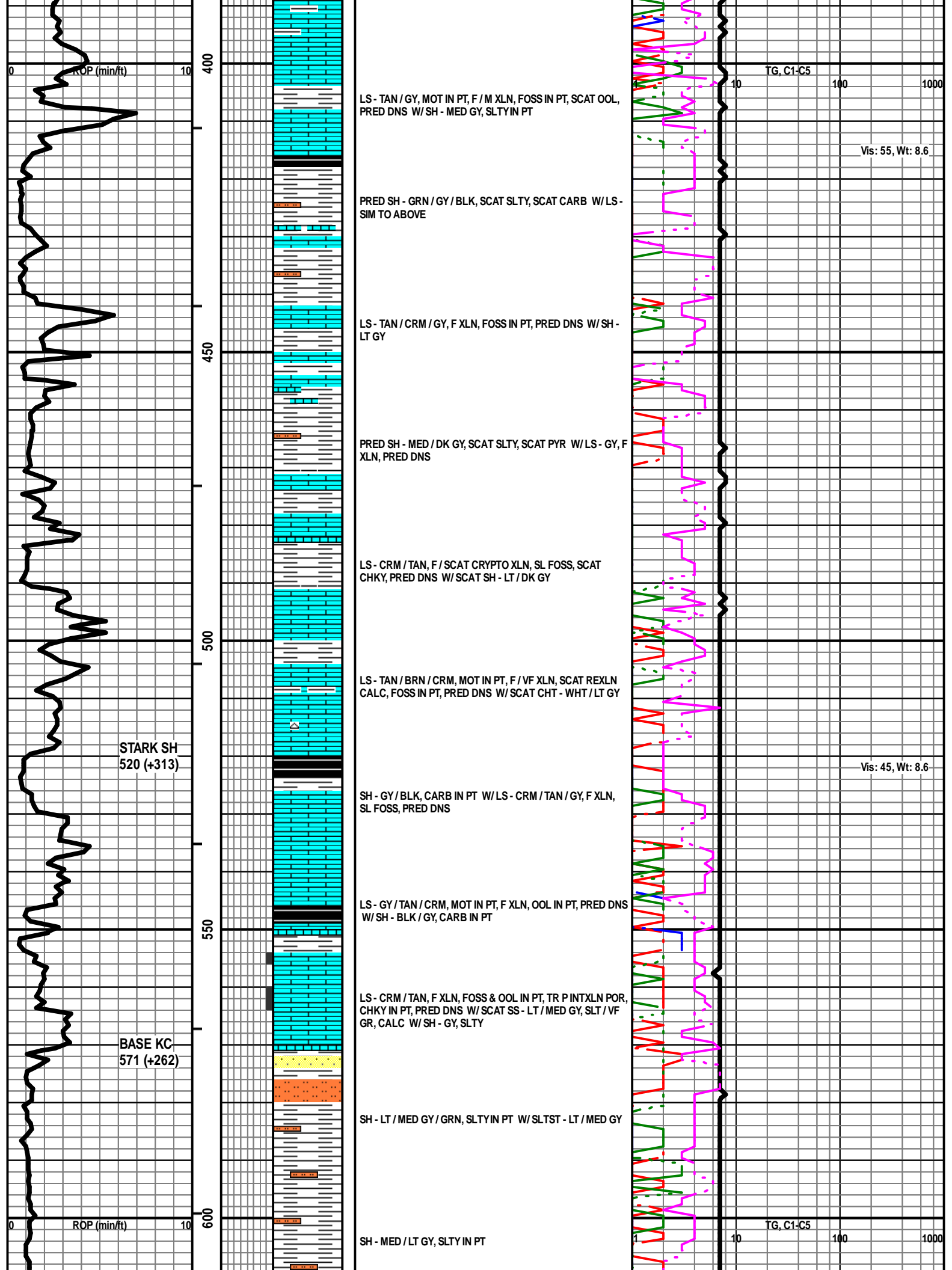
DRILLED 17.5" HOLE TO 250'  
SET 13.375" CSG @ 245'

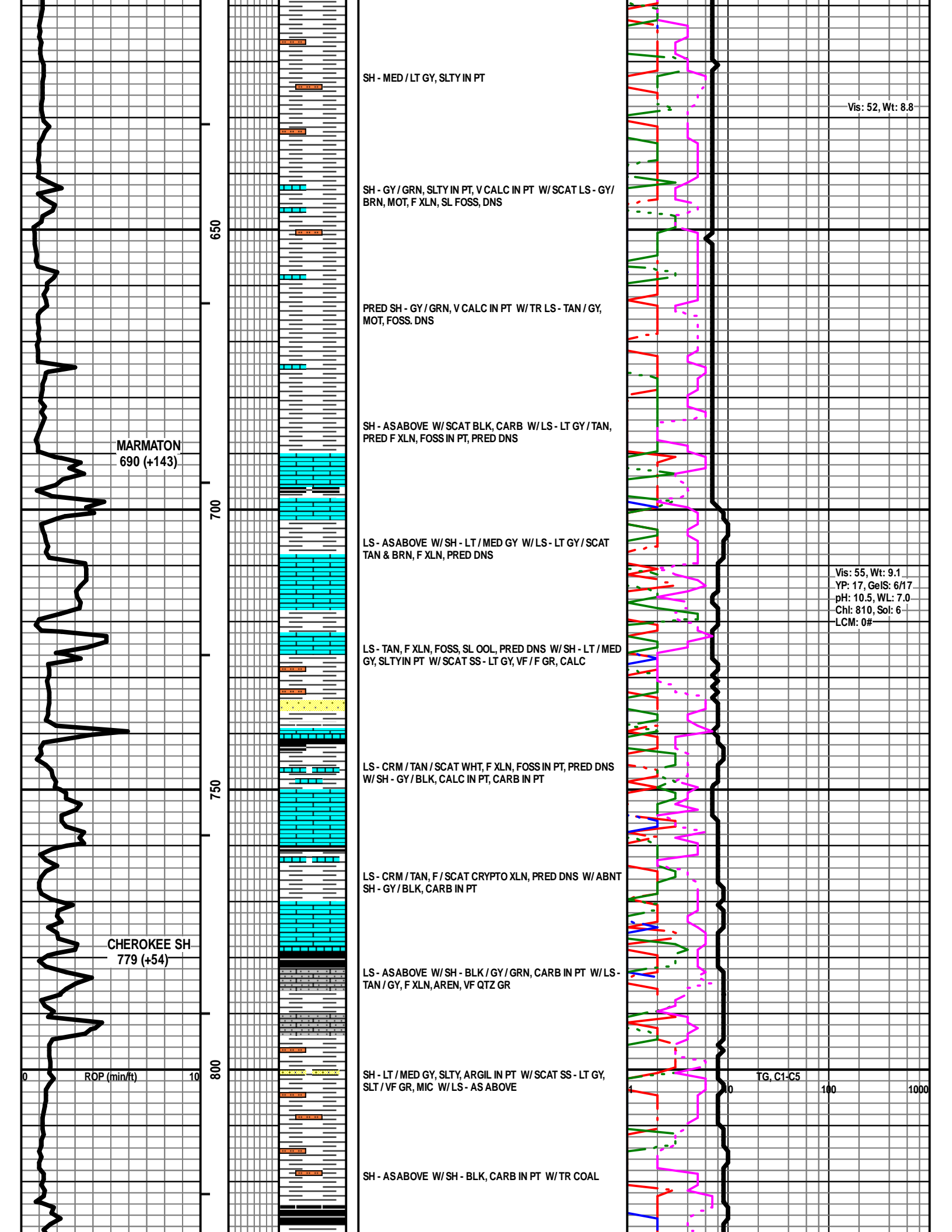
DRLG WITH BIT #2: 12.25" CONV.  
NEW SECURITY-5584FD; JETS: 3-16s

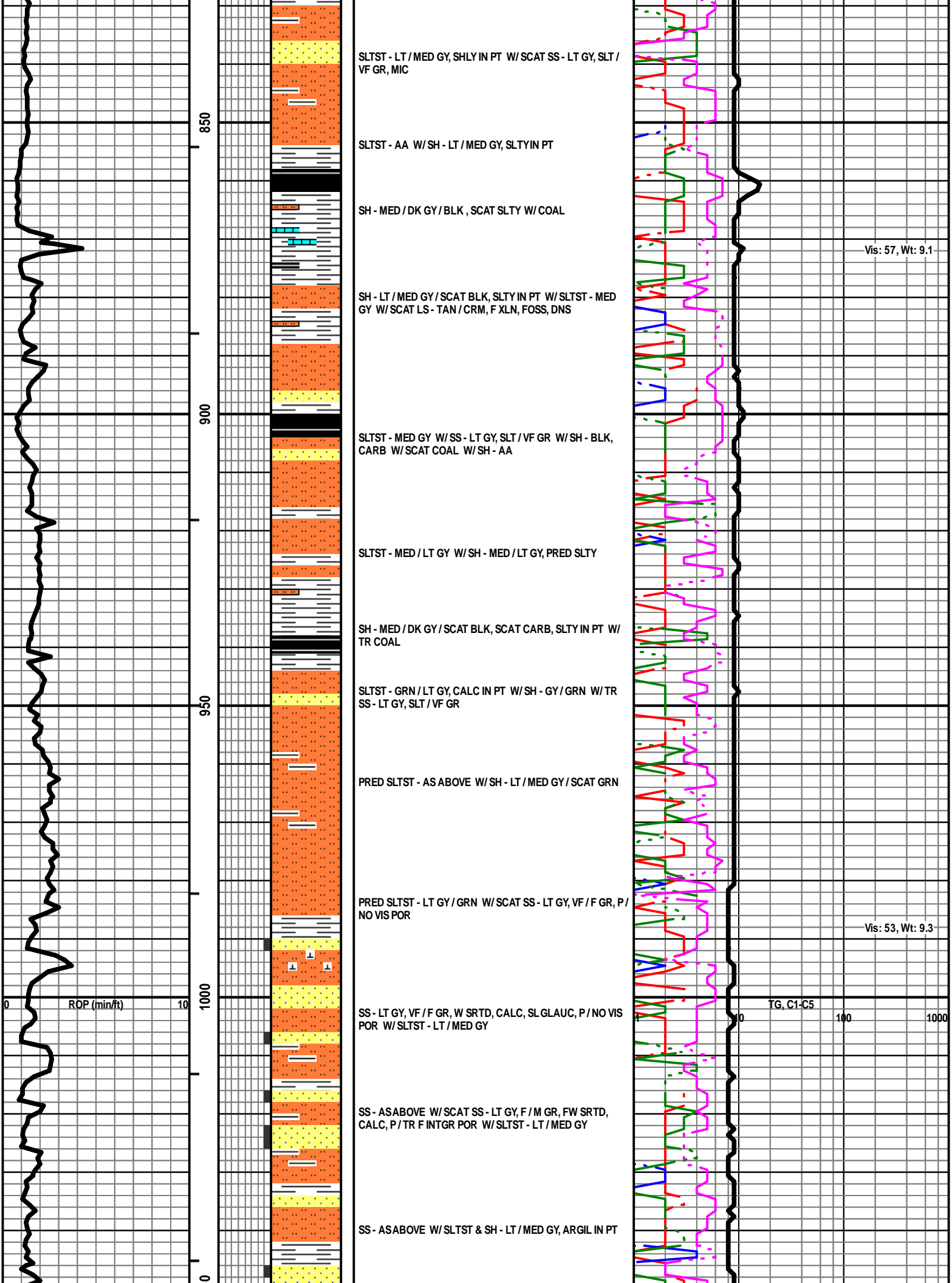
TEST GAS

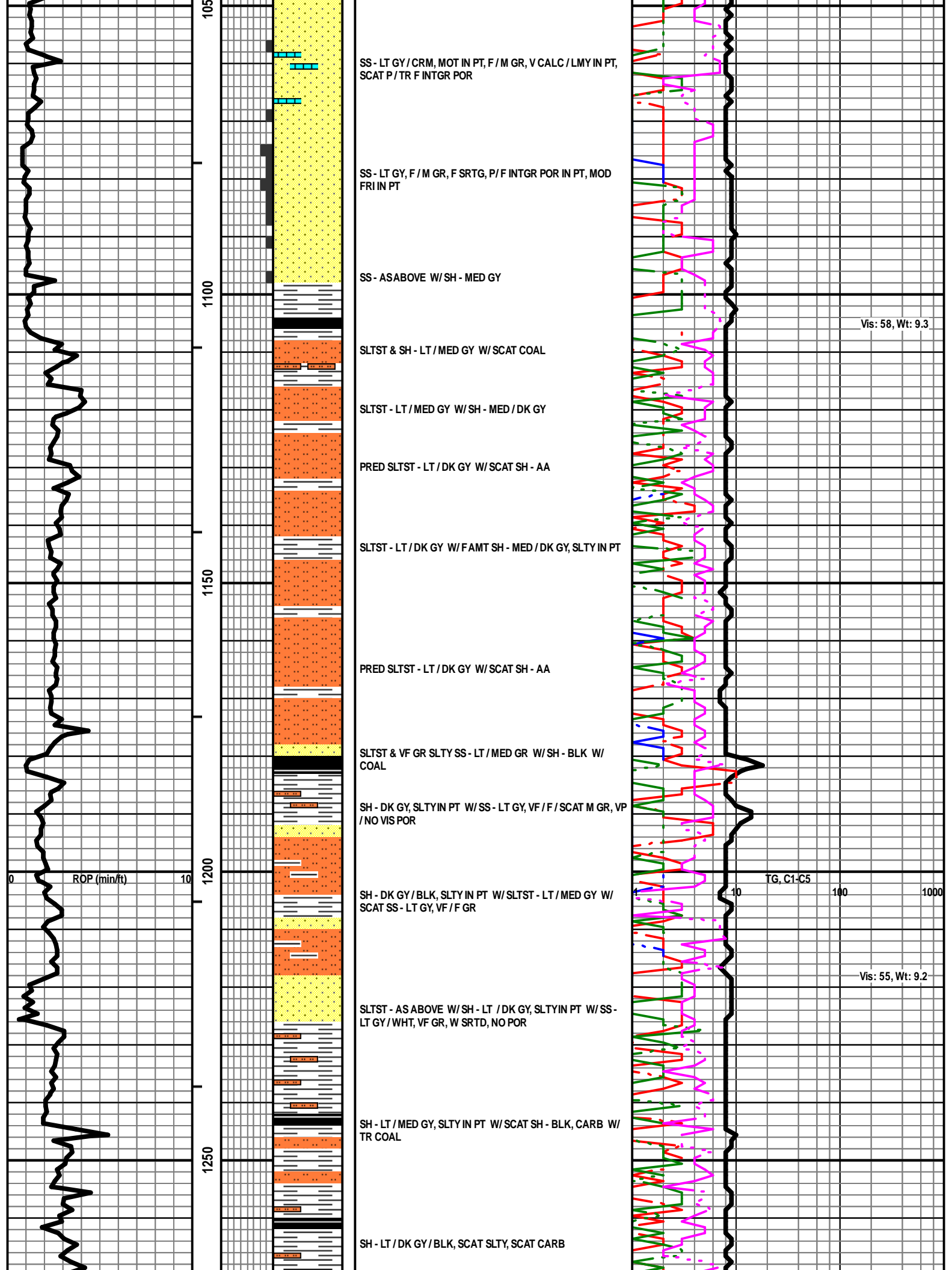
Vis: 34, Wt: 8.6

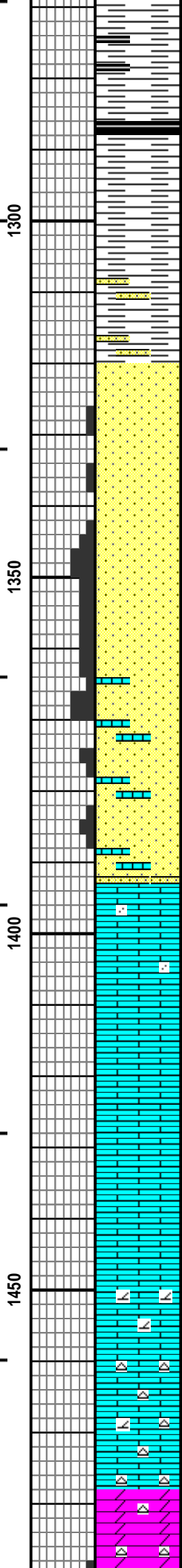
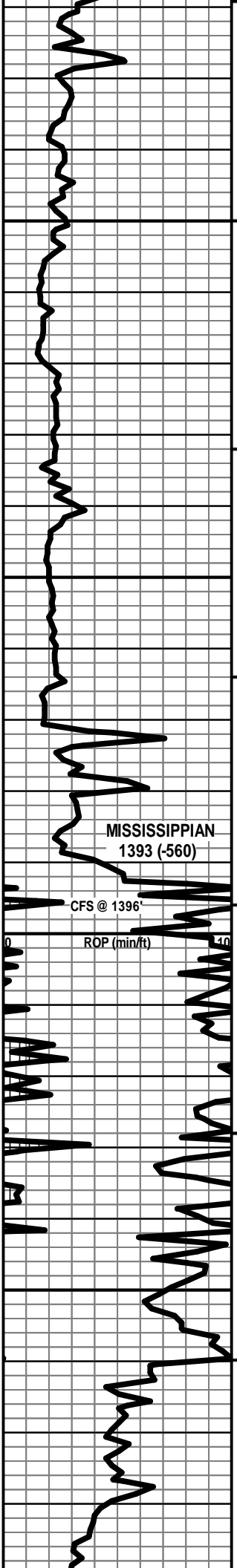
Vis: 34, Wt: 8.6











SH - PRED DK GY / BLK, SCAT CARB

PRED SH - DK GY / BLK W/ TR SS - LT GY, VF / G GR, FW / W SRTD

SS - LT GY, VF / F / SCAT M GR, F / FW SRTD, P / NO VIS POR, SL FRI IN PT W/ SH - AA

ABNT SS - LT GY, F / M GR, FW / W SRTD, P / G INTGR POR, FRI IN PT

SS - ASABOVE, PRED F / G INTGR POR W/ SCAT V CALC SS / V AREN LS - TAN / BRN / GY, MOT IN PT, VF / F XLN, VF / F GR

SS - ASABOVE, V CALC IN PT

LS - CRM / TAN / WHT, VF / F XLN, PRED OOL, SCAT AREN, SUBCHKY IN PT, PRED DNS

LS - CRM, F XLN, OOL, SCAT PYR, SCAT AREN, PRED DNS

LS - CRM / TAN, F / SCAT VF XLN, OOL, SCAT AREN, PRED DNS

LS - TAN / CRM / LT GY, PRED VF / CRYPTO XLN, DOLO IN PT, PRED DNS

LS - TAN / CRM, PRED MOT, F / M / SCAT C XLN, FOSS & OOL, V GLAUC, PRED DNS W/ CHT - ORG / GY, MOT W/ TR DOLO - TAN, VF / F XLN, DNS

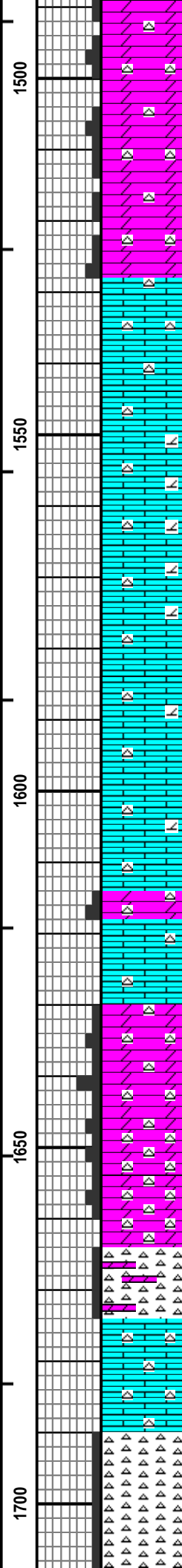
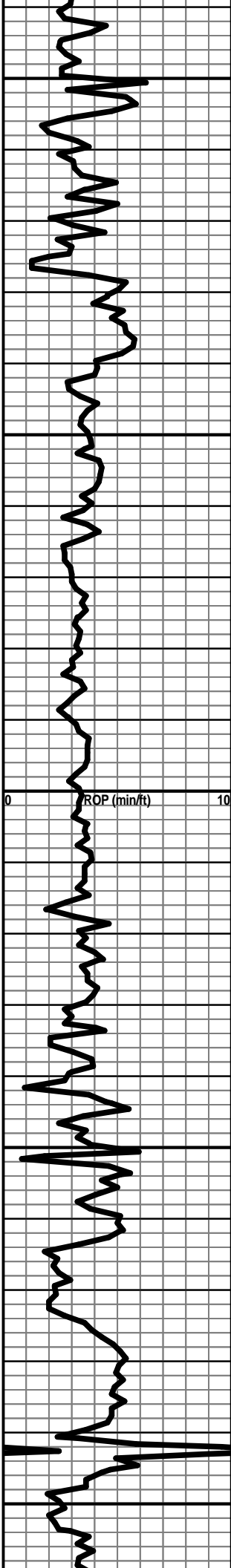
DOLO - CRM / LT GY, PRED VF XLN, SLTY IN PT, SCAT CHKY, SCAT P INTXLN POR W/ CHT - WHT / ORG / CRM, MOT

MISSISSIPPIAN  
1393 (-560)

Vis: 57, Wt: 9.2  
YP: 16, GeIS: 6/18  
pH: 9.5, WL: 7.2  
Chl: 810, Sol: 7  
LCM: 0#

BIT TRIP @ 1396'  
DRLG WITH BIT #3: 12.25" CONV  
NEW SMITH-F27; JETS: 3-16s  
TG, C1-C5

Vis: 53, Wt: 9.1



DOLO - CRM / SCAT TAN, F XLN, P / F INTXLN & VUG POR IN PT W/CHT - GY / WHT

DOLO - ASABOVE W/LS - CRM / TAN, MOT IN PT, F / M XLN, CHTY IN PT, PRED DNS W/CHT - WHT / GY

LS - CRM / TAN, F / C XLN, OOL, SL FOSS, DOLO IN PT, SCAT GLAUC, CHKY IN PT / DNS W/CHT - GY / WHT

LS - TAN / CRM, F / SCAT M XLN, OOL, DOLO IN PT, PRED DNS W/CHT - WHT / CRM / GY

LS - TAN / CRM / SCAT BRN, MOT IN PT, F / M XLN, OOL IN PT, SL FOSS, TR DOLO, PRED DNS W/CHT - ASABOVE

LS - V SIM TO ABOVE W/CHT - AS ABOVE

LS - CRM / SCAT TAN, F / M XLN, OOL IN PT, SCAT GLAUC, PRED DNS W/DOLO - CRM / TAN, F XLN, F INTXLN & VUG POR W/ ABNT CHT - AS ABOVE

DOLO - CRM / LT GY / SCAT TAN, F XLN, PRED P / F VUG & INTXLN POR, SCAT G POR W/ ABNT CHT - WHT / GY

CHT - WHT / GY, SCAT WEATH, PRED VIT W/DOLO - CRM / TAN / LT GY, SIM TO ABOVE

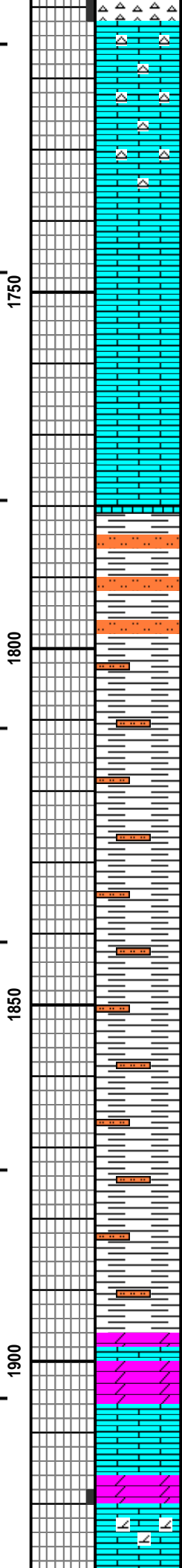
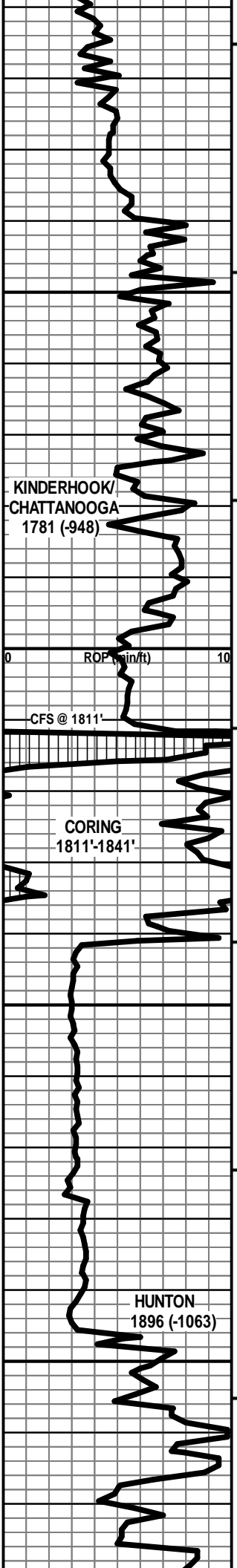
LS - CRM / TAN / GY, MOT IN PT, F / C XLN, FOSS & OOL IN PT, PRED DN W/ ABNT CHT - GY / SCAT WHT

CHT - WHT / TAN / GY, MOT IN PT, SL WEATH IN PT, PRED VIT W/LS - TAN / BRN / SCAT CRM, MOT IN PT, F XLN, DOLO IN PT, SUBCHKY / DNS

Vis: 62, Wt: 9.2  
 YP: 18, GelS: 8/20  
 pH: 9.5, WL: 7.2  
 Chl: 720, Sol: 7  
 LCM: 0#

TG, C1-C5

Vis: 52, Wt: 9.2+



LS - BRN / TAN, MOT IN PT, F XLN, SL FOSS, SCAT DOLOMITIC, PRED DNS W/ CHT - GY / BRN / TAN, MOT IN PT

LS - BRN / TAN / SCAT GY, MOT IN PT, F XLN, SL FOSS, DOLO IN PT, PRED DNS

LS - BRN / TAN, MOT IN PT, F XLN, FOSS IN PT, DOLO IN PT, SCAT SUBCHKY, PRED DNS

SH - MED / LT GY / SCAT GRN, SLTY IN PT W/ SLTST - LT / MED GY, SHLY IN PT

SH - MED / LT GY, SLTY IN PT W/ SCAT SLTST - LT GY

SH - LT / MED GY / SCAT GRN, SLTY IN PT

SH - ASABOVE (POOR SAMPLE QUALITY)

SH - ASABOVE (POOR SAMPLE QUALITY)

SH - LT / MED GY / GRN, SLTY IN PT

SH - LT / MED GY / GRN, SLTY IN PT

SH - LT / MED GY / GRN, SLTY IN PT

SH - LT / MED GY / GRN, SLTY IN PT

DOLO - CRM / LT GY / SCAT TAN, F XLN, SL GLAUC, LMY IN PT, PRED DNS W/ LS - CRM / TAN, MOT IN PT, F XLN, DNS

LS - TAN / BRN / CRM, MOT IN PT, VF / F / SCAT CRYPTO XLN, DOLO IN PT, PRED DNS W/ DOLO - CRM / TAN, F XLN, SCAT INTXLN POR

Vis: 53, Wt: 9.3

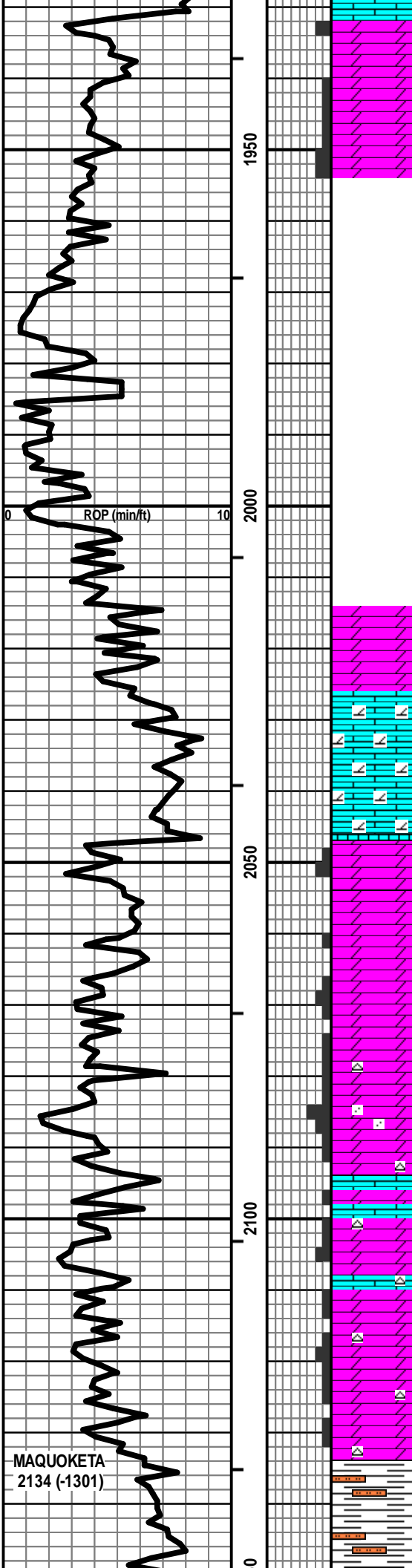
Vis: 58, Wt: 9.35  
 YP: 18, GeS: 6/15  
 pH: 9.5, WL: 6.8  
 Chl: 680, Sol: 8  
 LCM: 0#

TG, C1-C5

CORE WITH 7.875"  
 BIT: 1811'-1841'  
 FULL RECOVERY

REAM 12.125" TO 1841'

Vis: 53, Wt: 9.2



MAQUOKETA  
2134 (-1301)

DOLO - TAN / CRM, PRED VF / F XLN, TR M XLN, P / F INTXN  
POR IN PT, SCAT SUCR

NO SAMPLES DUE TO LOST RETURNS

DRLG WITH BIT #4: 12.25" CONV USED SECURITY-5584FD;  
JETS: 3-16s

NO SAMPLES DUE TO LOST RETURNS

DOLO & DOLO LS - TAN / BRN, VF XLN, LMY IN PT, DNS

LS - TAN / GY, VF / CRYPTO XLN, DOLOMITIC, DNS W/ DOLO  
- CRM / TAN, F / SCAT M XLN, P / TR F INTXN POR IN PT

DOLO - TAN / CRM / SCAT GY, VF / F XLN & SCAT M / C XLN,  
RHOMBIC IN PT, SCAT F INTXN POR, TR VUG POR

DOLO - CRM / TAN / LT GY, MOT IN PT, F / C XLN, RHOMBIC  
IN PT, SCAT SUCR, AREN IN PT, SCAT P / F INTXN POR, TR  
G POR W/ SCAT CHT - LT GY

DOLO - SIM TO ABOVE, P / F INTXN POR IN PT W/ SCAT LS  
- GY, VF XLN, DOLO IN PT, CHKY IN PT / DNS W/ CHT - LT GY

DOLO - CRM / TAN / GY, PRED VF / F XLN, SCAT M / C XLN,  
SCAT SUCR, SCAT AREN, PRED P / NO INTXN POR, TR F  
VUG POR W/ CHT - LT GY

SH - GRN / GY, PRED SLTY W/ SLTST - LT GY, PYR IN PT

Vis: 50, Wt: 9.2  
YP: 13, GeI: 4/12  
pH: 9.7, WL: 6.8  
Ch: 680, Sol: 7  
LCM: 0#

10/21/23 LOST FULL RETURNS @ 1971';  
PULL 5 STDS; DECR PUMP VOL TO 30 S/M; RUN PREMIX  
PILL W/ 12#/BBL LCM; NO RETURNS; RUN PREMIX PILL  
W/ 18#/BBL LCM, NO RETURNS; TOOH FOR PLUGGED  
BIT; TH WITH NO JETS 5 STDS OFF BOT; RUN PREMIX  
PILL W/ 20#/BBL LCM; NO RETURNS; ADD LCM TO PIT  
AND PREP PREMIX W/ 20#/BBL LCM; RUN 400 BBLs; NO  
RETURNS; DRY DRILL TO 1984'; LOST APPROX 900 BBLs  
TOTAL FLUID; SPOT CEM 8 TIMES, TOTAL OF 730 SX; NO  
RETURNS; SQUEEZE W/ 400 SX CEM; DRILL OUT CEM;  
HAVE 80% RETURNS; DRILL TO 2000'; LOOSE 75% OF  
RETURNS; BUILD VOL & LCM; DRILL TO 2013' W/ 40%  
RETURNS; BUILD VOL; SPOT 75 SX CEM; DRILLING W/  
FULL RETURNS @ 2013' 10/28/23

TG, C1-C5  
1 10 100 1000

Vis: 50, Wt: 8.6, LCM: 8#

DRLG W/ 80%-85%  
RETURNS @ 2100'  
INCR LCM TO 10#-12# PER BBL AND  
DECR PUMP VOL TO 50 S/M

DRLG W/ 95% RETURNS

SH - GRN / SCAT GY, PRED SLTY

SH - GY / GRN, SLTY IN PT

SH - GY / GRN, SLTY IN PT W/TR DOLO - LT GY, F XLN, PRED DNS

TG, C1-C5 10 100 1000

DRLG W/ FULL RETURNS

DOLO - LT GY / WHT, F / C XLN, PRED RHOMBIC, SCAT GLAUC, F / G VUG POR, F INTXLN POR IN PT

DOLO - LT / MED GY / WHT / CRM, F / C XLN, RHOMBIC IN PT, SCAT PYR, TR GLAUC, F / G VUG & INTXLN POR IN PT TO DNS

SCAT DOLO - AS ABOVE W/DOLO - TAN / BRN / SCAT CRM, VF / F / SCAT M XLN, SCAT P / F INTXLN POR, PRED DNS W/ CHT - GY / TAN / WHT, MOT IN PT

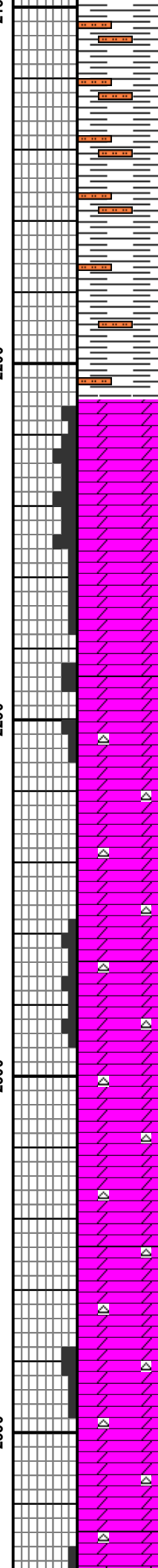
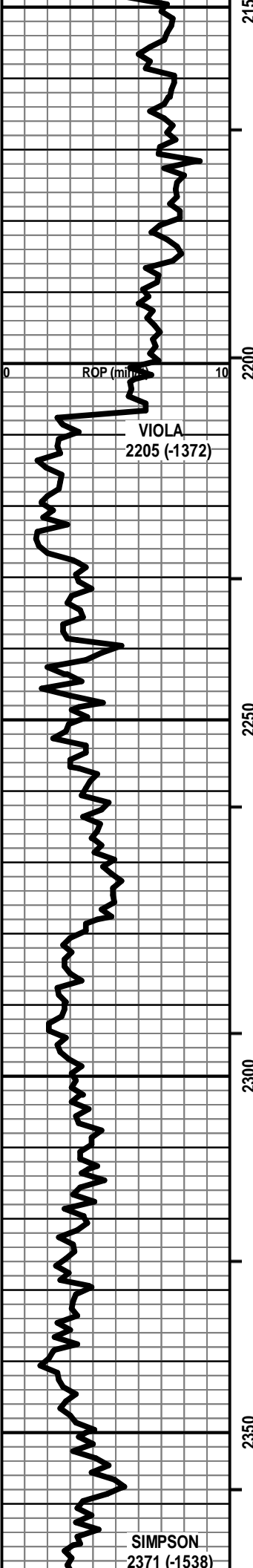
DOLO - TAN / BRN, F / M XLN, RHOMBIC IN PT, SCAT P / TR F INTXLN & VUG POR, PRED DNS W/ CHT - GY / TAN / CRM, PRED MOT

DOLO - ASABOVE, P / F INTXLN & VUG POR IN PT, SOME DNS W/ CHT - ASABOVE

DOLO - TAN / BRN, PRED F / SCAT VF XLN, PRED DNS W/ CHT - GY / TAN / BRN, MOT IN PT

DOLO - TAN / BRN, F / M XLN, RHOMBIC IN PT, P / F INTXLN POR IN PT TO DNS W/ CHT - AA

DOLO - TAN / BRN, F / M XLN, RHOMBIC IN PT, P / F INTXLN POR IN PT TO DNS, SHLY IN PT, DK GY / BLK SH W/ CHT - AA W/ SCAT SH - GRN, SLTY



SH - GRN / SCAT GY, PRED SLTY

SH - GY / GRN, SLTY IN PT

SH - GY / GRN, SLTY IN PT W/TR DOLO - LT GY, F XLN, PRED DNS

DOLO - LT GY / WHT, F / C XLN, PRED RHOMBIC, SCAT GLAUC, F / G VUG POR, F INTXLN POR IN PT

DOLO - LT / MED GY / WHT / CRM, F / C XLN, RHOMBIC IN PT, SCAT PYR, TR GLAUC, F / G VUG & INTXLN POR IN PT TO DNS

SCAT DOLO - AS ABOVE W/DOLO - TAN / BRN / SCAT CRM, VF / F / SCAT M XLN, SCAT P / F INTXLN POR, PRED DNS W/ CHT - GY / TAN / WHT, MOT IN PT

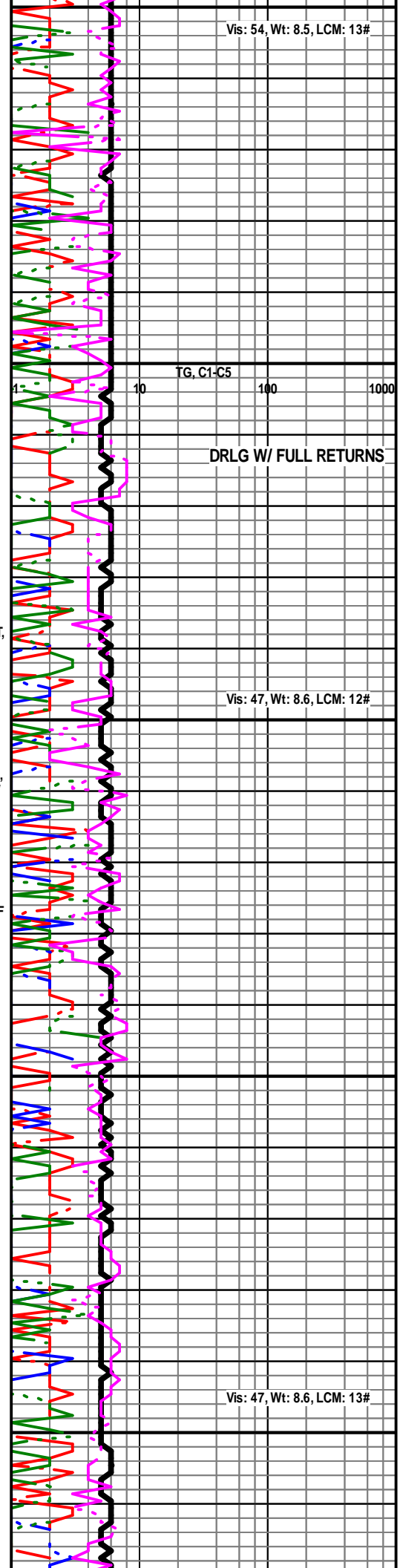
DOLO - TAN / BRN, F / M XLN, RHOMBIC IN PT, SCAT P / TR F INTXLN & VUG POR, PRED DNS W/ CHT - GY / TAN / CRM, PRED MOT

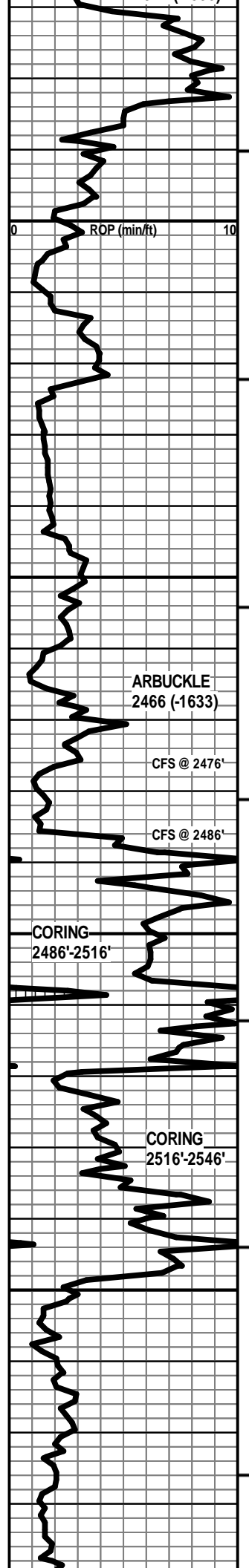
DOLO - ASABOVE, P / F INTXLN & VUG POR IN PT, SOME DNS W/ CHT - ASABOVE

DOLO - TAN / BRN, PRED F / SCAT VF XLN, PRED DNS W/ CHT - GY / TAN / BRN, MOT IN PT

DOLO - TAN / BRN, F / M XLN, RHOMBIC IN PT, P / F INTXLN POR IN PT TO DNS W/ CHT - AA

DOLO - TAN / BRN, F / M XLN, RHOMBIC IN PT, P / F INTXLN POR IN PT TO DNS, SHLY IN PT, DK GY / BLK SH W/ CHT - AA W/ SCAT SH - GRN, SLTY





2400  
2450  
2500  
2550



SH - GY/GRN, CALC IN PT, SCAT SLTY W/ DOLO - GY/TAN, MOT IN PT, F/M XLN, AREN W/ SCAT SS - LT GY, F/M GR, DOLOMITIC, P/NO POR

AREN DOLO - AS ABOVE, G SHO GILS, TR FO, V FT ODOR W/ SCAT DOLO SS - AS ABOVE W/ SCAT SS - LT GY, F/M GR, W/FW SRTD, SA/R, PRED DOLO, F INTGR POR

SS - LT GY, F/M GR, SCAT C GR, FW/W SRTD, SA/R, SL/ MOD CALC CEM, V DOLO IN PT, F/G INTGR POR IN PT, ABNT UNCONS QTZ, F/C GR, PRED SR/R, FT ODOR

SS - LT GY, F/M GR, SCAT C GR, FW/W SRTD, SA/R, SL/ MOD CALC CEM, DOLO IN PT, F/G INTGR POR IN PT, ABNT UNCONS QTZ, F/C GR, PRED SR/R

SS - V SIM TO ABOVE, CLSTRS & UNCONS QTZ, DOLO IN PT, F/G INTGR POR

DOLO - CRM/TAN/SCAT LT GY, VF/M XLN, AREN IN PT, P/F INTXLN POR, TR VUG POR W/SCAT CHT - LT GY/WHT

DOLO - CRM/TAN/SCAT LT GY, VF/M XLN, SCAT OOL, SUCR IN PT, SCAT RHOMBIC, F/G INTXLN POR IN PT, SCAT VUG & MOLDIC POR W/CHT - LT GY/WHT, OOL IN PT, SCAT WEATH

DOLO - CRM/TAN/GY, VF/M XLN, SCAT C XLN, RHOMBIC IN PT, SUCR IN PT, F/G INTXLN & VUG POR IN PT W/CHT - LT GY/WHT

DOLO - SIM TO ABOVE W/DOLO - CRM/TAN, VF/F XLN, P/NO VIS POR IN PT W/CHT - AS ABOVE

DOLO - CRM/TAN, M/C XLN, RHOMBIC/ANHEDRAL, F/G VUG & INTXLN POR W/CHT - LT GY/WHT

DOLO - CRM/TAN, VF/M XLN, SCAT C XLN, SUCR IN PT, RHOMBIC IN PT, P/G INTXLN & VUG POR W/SCAT CHT - AS ABOVE

DOLO - V SIM TO ABOVE

DOLO - TAN/CRM/SCAT GY, F/M XLN, SUCR IN PT, SCAT RHOMBIC, P/F INTXLN POR, TR VUG POR

DOLO - TAN/CRM/GY, VF/F/SCAT M XLN, SUCR IN PT, P/SCAT F INTXLN POR W/CHT - LT GY/WHT

Vis: 47, Wt: 8.7  
YP: 14, GelS: 2/7  
pH: 9.7, WL: 6.6  
Chl: 1000, Sol: 2  
LCM: 12#

TG, C1-C5

DRLG W/ 85% RETURNS

LOG WELL @ 2476'  
SET 8.625" CSG @ 2,470'  
DRLG WITH BIT #5: 7.625" CONV  
NEW HTC-FA537G; JETS: 3-16s

CORE WITH 7.625"  
BIT: 2486'-2516'  
FULL RECOVERY

Vis: 45, Wt: 8.6, LCM: 5#

CORE WITH 7.625"  
BIT: 2516'-2546'  
FULL RECOVERY

DRLG WITH BIT #6: 7.625" PDC  
NEW SMITH-M1616; JETS: 6-14s

Vis: 46, Wt: 8.5, LCM: 4#

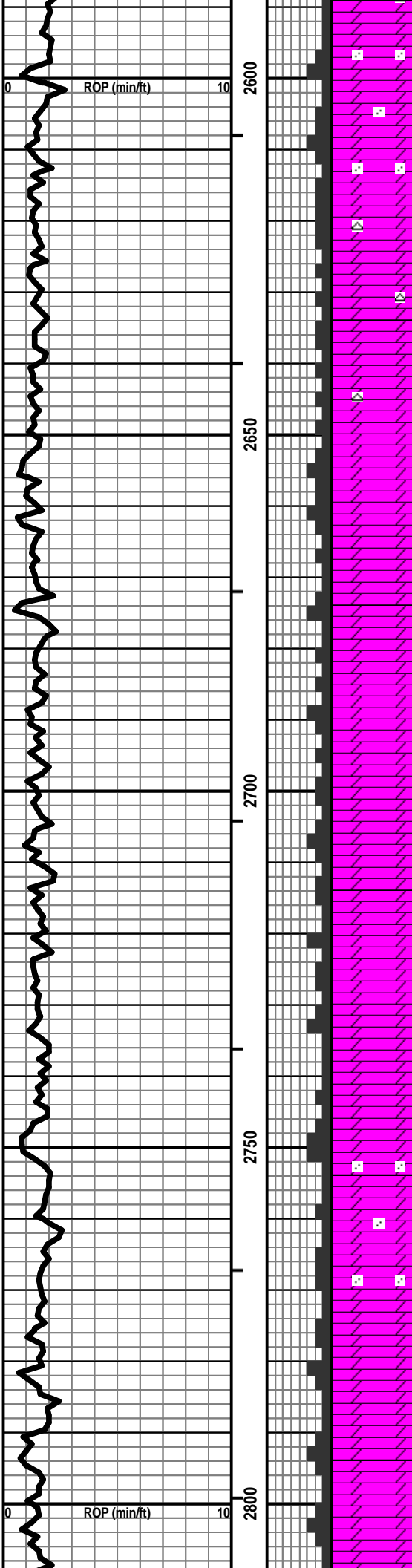
ARBUCKLE  
2466 (-1633)

CFS @ 2476'

CFS @ 2486'

CORING  
2486'-2516'

CORING  
2516'-2546'



DOLO - CRM / GY / TAN, VF / F / SCAT M XLN, AREN IN PT, P / G INTXLN POR IN PT TR VUG POR

DOLO - GY / CRM, VF / F / SCAT M XLN, F INTXLN & VUG POR IN PT, TR G POR W / SCAT CHT - LT GY / WHT

DOLO - V SIM TO ABOVE

DOLO - GY / CRM, F / M XLN, SCAT C XLN, RHOMBIC IN PT, PYR IN PT, F / G INTXLN & VUG POR IN PT

DOLO - ASABOVE W / DOLO - LT GY / SCAT WHT, VF / F XLN, P / SCAT F INTXLN POR

DOLO - LT / MED GY / SCAT WHT, PRED F / M XLN, RHOMBIC IN PT, F INTXLN POR IN PT, TR G POR

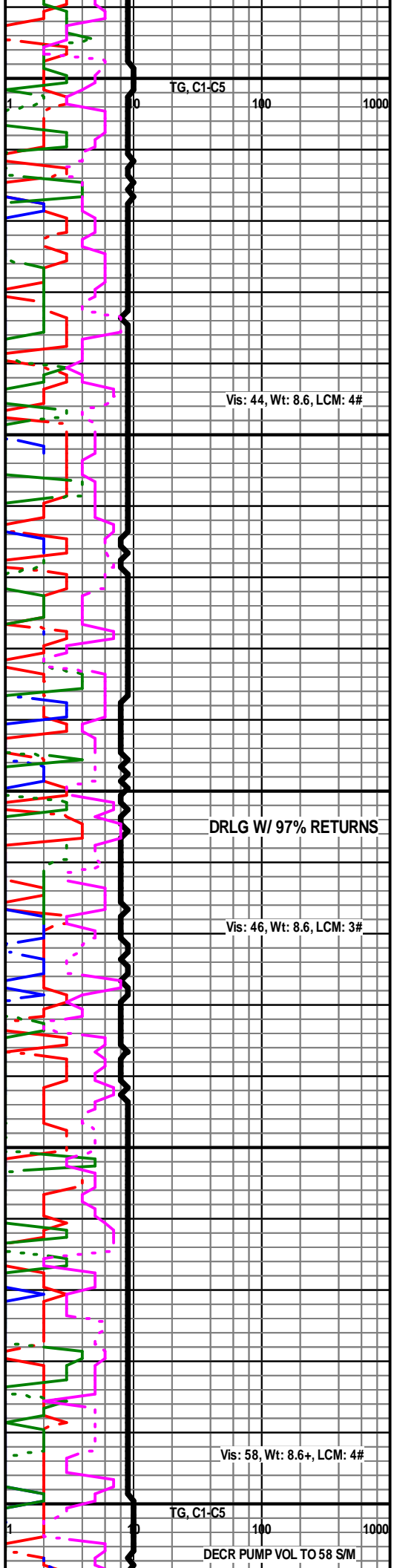
DOLO - SIM TO ABOVE, SCAT C XLN, F / G VUG & INTXLN POR IN PT, SOME DNS

DOLO - LT / MED GY / CRM, MOT IN PT, F / M XLN, SCAT C XLN, RHOMBIC IN PT, F / G VUG & INTXLN POR IN PT

DOLO - LT / MED GY, PRED F XLN, AREN IN PT, F AMT CHL, SCAT GLAUC, P / SCAT F INTXLN POR

DOLO - LT / MED GY / CRM, F / M XLN, SCAT C XLN, RHOMBIC IN PT, SCAT OOL, F / G VUG & INTXLN POR IN PT

DOLO - V SIM TO ABOVE, F / G VUG & INTXLN POR IN PT, SCAT GLAUC



TG, C1-C5

100 1000

Vis: 44, Wt: 8.6, LCM: 4#

DRLG W / 97% RETURNS

Vis: 46, Wt: 8.6, LCM: 3#

Vis: 58, Wt: 8.6+, LCM: 4#

TG, C1-C5

100 1000

DECR PUMP VOL TO 58 S/M

