

Geological Wellsite Report

By David Griffin, RG
Griffin Geological Resources, Inc.
November 21, 2017

Well Info: Taylor-Bird T-11, Deepening
N2 SW NW NE/4
4488' fsl, 2972' fwl
Section 23, T8S-R21E
Leavenworth County, KS
API No. 15-103-21322-00-01
GPS Coordinates
W-95.038376, N39.344238
Datum: GL, Elev. 1017'
RTD: 1842', GL
Status: Dry Hole,
Plugged and Abandoned

Operator: Thomas Well Service, Inc.
P.O. Box 97
McLouth, KS 66054
Operator License No.: 30329
Owner: Bob Thomas

Contractor: HAT Drilling, LLC
12371 KS Hwy 7
Mound City, Kansas, 66056
Contractor License No.: 33734

Objective: Evaluate the Mississippian and Hunton

Drilling Notes:

November 7, 2017, Mix Polymer-Gel based mud, Drill out top cement plugs
November 8, 2017, Reach OTD of 1408', now 1410' due to 21' soil pad. Drill from 1410' to 1558', 6 $\frac{3}{4}$ " 5-Blade PDC Bit, Shut down overnight.
November 9, 2017, Drill from 1558' to 1838', Begin Bit Trip, Shut down overnight
November 10 thru November 12, 2017, Try to fish out lost kelly pin in hole, Trip in button bit, Drill 4' more. Junk not recovered, Logging not performed.
November 13, 2017, Abandon and plug hole.

Geological Supervision:

David Griffin, RG, provided wellsite supervision on November 8 and 9, 2017. Drilling was witnessed from 1410' to 1838'. Samples were microscopically examined from 1410' to 1838'. Samples contained much sluff and carryover.

Cement Co.: Consolidated Oil Well Service Co., Contractor License No.: 04996



Geological Datums:

Geologic Tops					
<i>Thomas Well Service, Inc.</i> <i>Taylor-Bird T-11</i> <i>N/2 SW NW NE/4</i> <i>Sec. 23-T8S-R21E</i>			<i>Triple "E" Drilling</i> <i>Taylor-Bird 10</i> <i>~NE SE NE NW/4</i> <i>Sec. 23-T8S-R21E</i>		
Geologic Zones of Interest	Sample Tops		STRC COMP	GRN Log	
	GL Elev. 1017'			GL Elev. 1011'	
	Depth	Subsea		Depth	Subsea
Base Kansas City	625			na	
Cherokee	na			na	
Coal Marker	~1237	-221	-3	1229	-218
Upper McLouth SS	~1286	-270	-1	1280	-269
Base SS	~1310	-294	-3	1301	-290
Lower McLouth SS	absent?			1345	-334
Burgess SS	absent			1388	-377
Top of Mississippian	1418	-401	-6	1406	-395
B-K Chert, Zone 1	1630	-613			
B-K Chert, Zone 2	1692	-675			
Kinderhook Shale	1791	-774			
Rotary Total Depth	1842	-826		1420	-409

Structural Comparisons:

Comparison of the top of the Top of Mississippian indicates that Taylor-Bird T-11 is 6' structurally low to Taylor-Bird 10, a producer lying 534' to the west.

Gas Detection, Logs, Cores, DST's:

Total gas detection was performed from 1410' to 1838', no wireline logs or cores were ran on this well.

Descriptions of Oil Show Zones:

A very slight to trace show of tar was observed in the top 20' of the Mississippian LS, from ~1418' to 1440'. No other shows were observed.

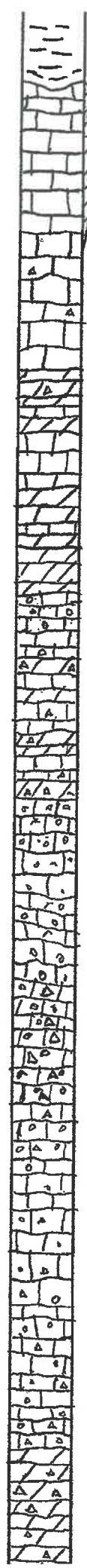
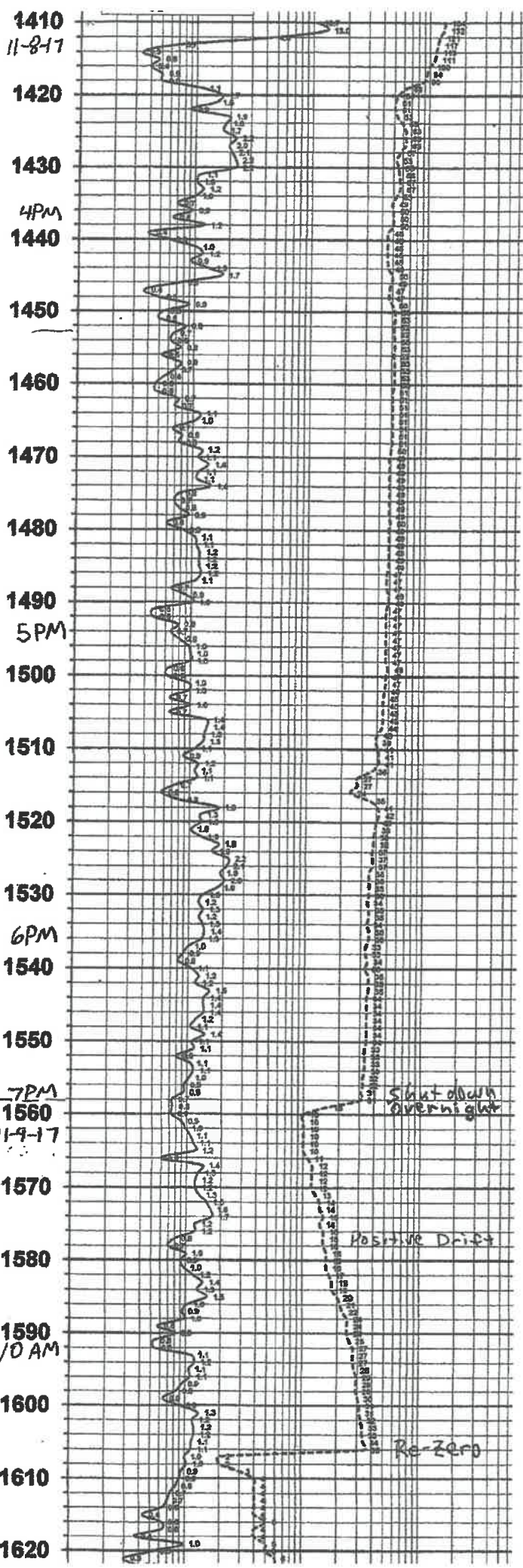
Summary:

Taylor-Bird T-11 contained only a very slight to trace show of tar in the top 20' of the Mississippian and the Hunton was not reached due to junk in the hole, therefore, the well was not logged and subsequently plugged and abandoned as a dry hole.

Respectfully Submitted,

David Griffin, RG
Griffin Geological Resources, Inc.
Attachment: Sample Log





API No.: 15-103-21322-00-01
 Sh, vlt gy to dkgy, min bk

CFS
 1/5 li
 Tar
 NFO

LS, ltgy, fm xtlu, pr fr φ, v sli
 tar stain, No Free Oil, No odor

Trace
 Tar

LS, AA, pr φ, Trace Tar stu, NFO

LS, ltgy, f-mxtln, pr φ, NS, No odor
 < 1% ckt, orange

LS, AA

Dol, ltgy, vf xln, pr fr φ; ckt, 1%
 vlt gy to clr, NS
 LS + Dol, Intbd, NS

LS, ltgy, dms, NS

Dol, grn-gy to ltgy, pr φ, NS

Dol, AA, mndrk si, NS

Grnst, ltgy, f-xln, pr φ, NS

Dol, vlg, vf xln, ckt, 5%, o-wh
 LS + Dol, interbedded, NS; ckt, 3%

Grnstn, ltgy, f-mxtln, pr φ, NS

AA, NS

Grnstn, AA; ckt, 15, o-wh, th, speckled
 sharp, NS

Grnst, AA; ckt, 20

CFS

Grnst, ltgy-th, f-mxtln, pr fr φ, NS
 ckt, 3, o-wh, sharp

Grnst + LS, ckt, 3-5%

AA

AA

Dol, tn, fr i φ; ckt, 20, wh, sharp, NS

Dol, vlt ac to tan, f-xln, fr ad i φ

6 3/4" PDC Bit.

MISS TOP

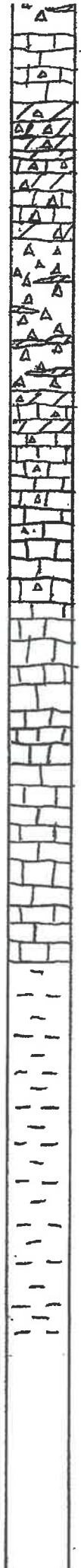
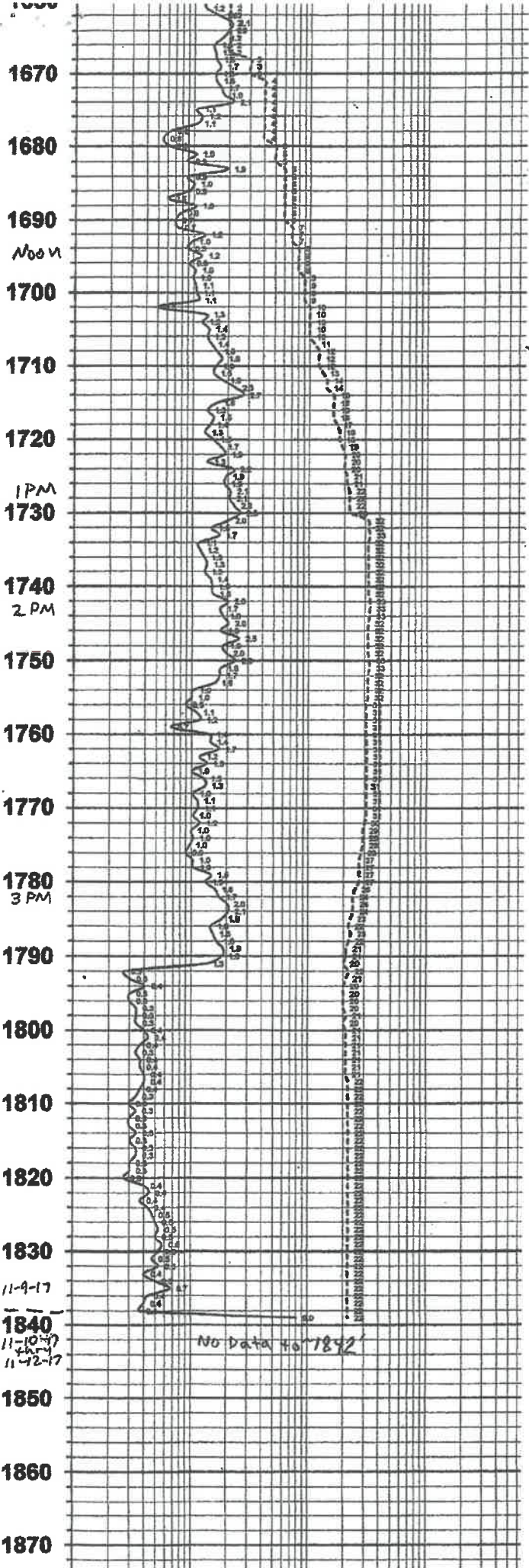
1418 (-40)

10 Samples:

Much
 Carry over
 likely due to
 inadequate
 sample box

Good Mud
 Gel & Polymer
 Based

Samples
 30-50%
 carry over &
 sluff



LS, Hgy-tn, f xln, prp, NS; Dol, 20,
cht, 30, AA

cht, 40; shrp to Trip, frp, NS; Dol, 40
L 5, 10, NS

cht, 60, vlg, wh, 0-wll/shrp to Trip
pr-trp, NS; Dol, 20, bn-gy to
tan, fr ixp, NS

Dol + LS int bds, vlg to dk bn-gy
+ shly, vt-xln, prp; cht, 20,
AA, NS

LS, Gy-Bu, dns; cht, 5, carryover?

LS, AA; cht, 2-3%, NS

LS, Gy-Bu, Dns, NS

LS, Gy-Bu, Dns, NS

Shale, med-gy to gy

Shale, AA, NS, No odor

- Try to fish Kelly Pin, No Luck
- Not Open-Hole Logged due to Risk of getting hung in hole
- Plugged + Abandoned
11-13-17

B-K chert (Zone 2)
1692 (675)

Work on table
lost Kelly Pin
in Hole?

Kinderhook Shale
1791 (779)

Button Bit Trip
at 1838'

Total Depth
1842 (825)

11-9-17
11-10-17
11-12-17

No data to 1842