

15-141-20348

8-10s-12w



## DRILL STEM TEST REPORT

Prepared For: **F G Holl Co LLC**

P.O.Box 780167  
Wichita, Ks. 67278

ATTN: Elwyn Nagel

**8-10-12 Osborne KS**

**Fallis #1**

Start Date: 2000.12.12 @ 16:14:00

End Date: 2000.12.12 @ 21:00:00

Job Ticket #: 13940                      DST #: 1

Trilobite Testing, Inc

PO Box 362 Hays, KS 67601

ph: 785-625-4778 fax: 785-625-5620



**TRILOBITE  
TESTING, INC**

# DRILL STEM TEST REPORT

F G Holl Co LLC

P.O.Box 780167  
Wichita, Ks. 67278

ATTN: Ew yn Nagel

**Fallis #1**

**8-10-12 Osborne KS**

Job Ticket: 13940

**DST#: 1**

Test Start: 2000.12.12 @ 16:14:00

## GENERAL INFORMATION:

Formation: "A" LKC

Deviated: No Whipstock: ft (KB)

Time Tool Opened: 17:50:22

Time Test Ended: 21:00:00

Test Type: Conventional Bottom Hole

Tester: Dan Bangle

Unit No: 11

Interval: 3018.00 ft (KB) To 3060.00 ft (KB) (TVD)

Total Depth: 3060.00 ft (KB)

Hole Diameter: 7.88 inches Hole Condition: Fair

Reference Elevations: 1790.00 ft (KB)

1785.00 ft (CF)

KB to GR/CF: 5.00 ft

**Serial #: 3024** Inside

Press@RunDepth: 33.75 psig @ 3029.01 ft (KB)

Start Date: 2000.12.12

End Date: 2000.12.12

Start Time: 16:14:23

End Time: 22:31:52

Capacity: 7000.00 psig

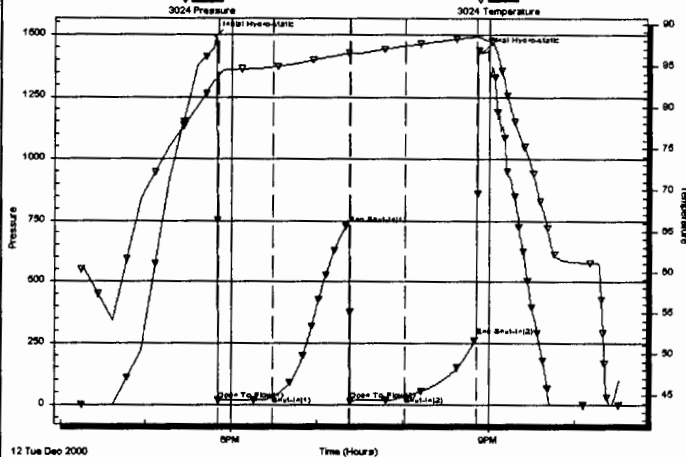
Last Calib.: 2000.12.13

Time On Btm: 2000.12.12 @ 17:48:22

Time Off Btm: 2000.12.12 @ 20:55:22

TEST COMMENT: IF-Weak-died in 17 min  
FF-Weak-died in 10 min

Pressure vs. Time



## PRESSURE SUMMARY

Time (Min.)	Pressure (psig)	Temp (deg F)	Annotation
94	1492.51	83.30	Initial Hydro-static
96	18.39	83.79	Open To Flow (1)
135	33.81	84.83	Shut-In(1)
188	731.98	86.47	End Shut-In(1)
189	17.31	86.50	Open To Flow (2)
227	33.75	87.35	Shut-In(2)
277	276.62	88.48	End Shut-In(2)
281	1429.51	88.21	Final Hydro-static

## Recovery

Length (ft)	Description	Volume (bbl)
5.00	Mud w/ oil spots	0.07

## Gas Rates

	Choke (inches)	Pressure (psig)	Gas Rate (Mcf/d)

# Pressure vs. Time

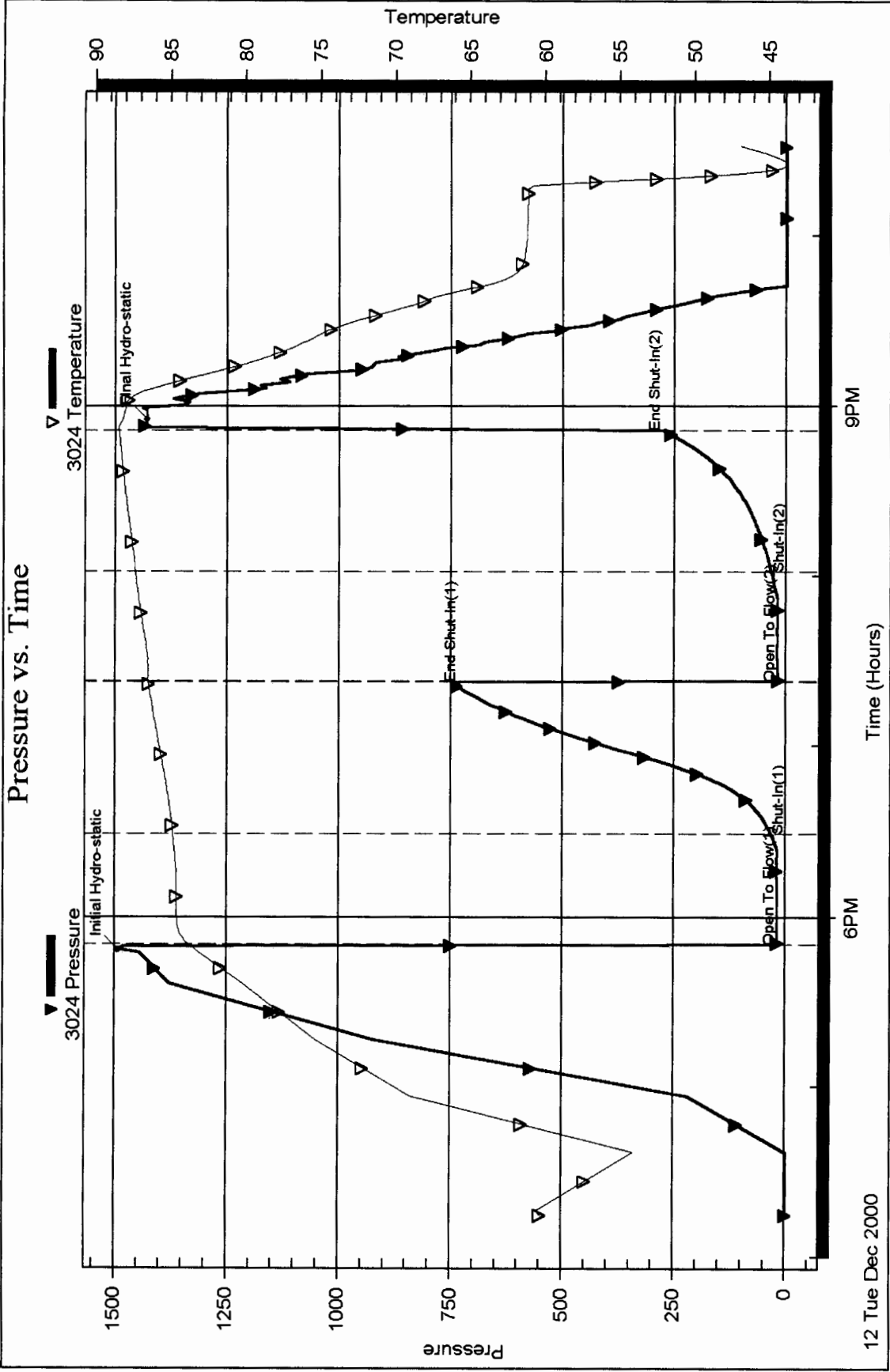
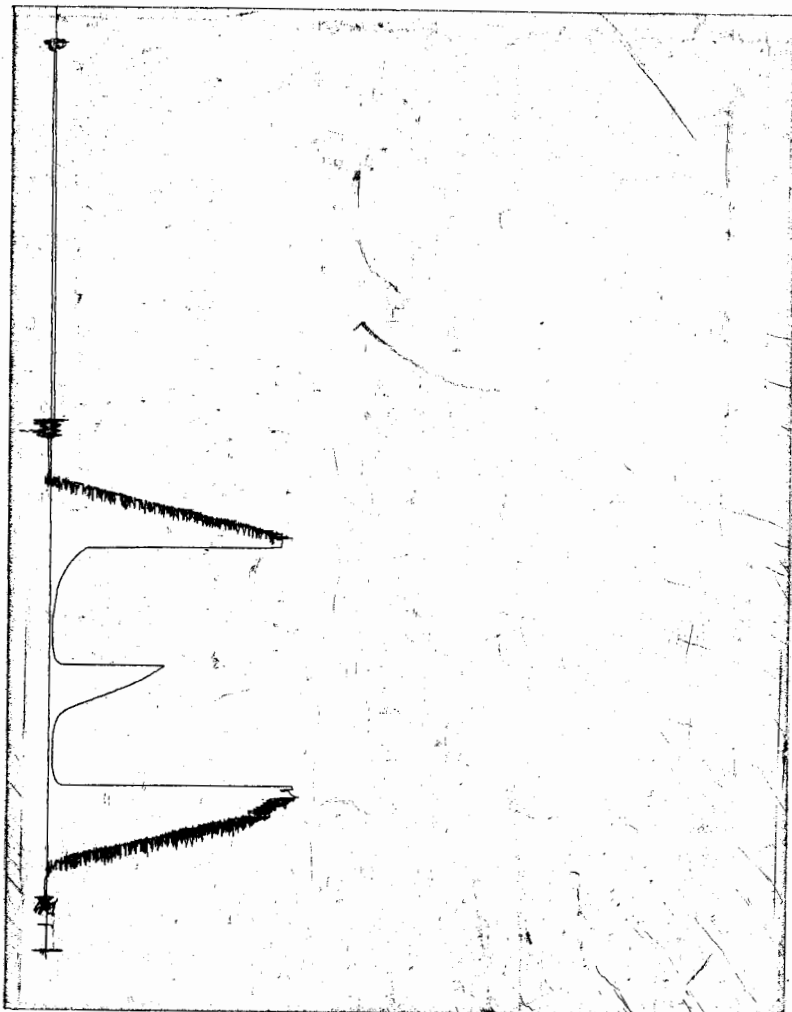


CHART PAGE



This is a photocopy of the actual AK-1 recorder chart

# TRILOBITE TESTING L.L.C.

P.O. Box 362 • Hays, Kansas 67601

Nº 13940

## Test Ticket

Well Name & No.	<u>Fallis #1</u>	Test No.	<u>1</u>	Date	<u>12-12-00</u>
Company	<u>F.G. Hall Co. L.L.C</u>	Zone Tested	<u>"A"</u>	<u>LKC</u>	
Address	<u>P.O. Box 780167, Wichita, Ks. 67278</u>		Elevation	<u>1790</u>	KB <u>1785</u> GL
Co. Rep / Geo.	<u>Bill Ree</u>	Cont.	<u>Vonfeldt #1</u>	Est. Ft. of Pay	Por. %
Location: Sec.	<u>8</u>	Twp.	<u>10</u>	Rge.	<u>12</u>
				Co.	<u>Osborne</u> State <u>Ks.</u>
No. of Copies		Distribution Sheet (Y, N)		Turnkey (Y, N)	
				Evaluation (Y, N)	

Interval Tested	<u>3018 - 3060</u>	Initial Str Wt./Lbs.	<u>39000</u>	Unseated Str Wt./Lbs.	<u>39000</u>
Anchor Length	<u>42</u>	Wt. Set Lbs.	<u>39,000</u>	Wt. Pulled Loose/Lbs.	<u>35,000</u>
Top Packer Depth	<u>3013</u>	Tool Weight	<u>1200</u>		
Bottom Packer Depth	<u>3018</u>	Hole Size — 7 7/8"		Rubber Size — 6 3/4"	
Total Depth	<u>3060</u>	Wt. Pipe Run		Drill Collar Run	
Mud Wt. <u>9.1</u> LCM	Vis. <u>54</u> WL <u>9.2</u>	Drill Pipe Size	<u>4.5 X 14</u>	Ft. Run	<u>3023</u>
Blow Description	<u>I.F. Weak - Died in 17 min.</u>				

F.F. Weak - Died in 10 min.

Recovery — Total Feet	<u>5</u>	GIP		Ft. in DC		Ft. in DP	<u>5</u>
Rec.	<u>5</u>	Feet Of	<u>Mud w/oil spots</u>	%gas	%oil	%water	%mud
Rec.		Feet Of		%gas	%oil	%water	%mud
Rec.		Feet Of		%gas	%oil	%water	%mud
Rec.		Feet Of		%gas	%oil	%water	%mud
Rec.		Feet Of		%gas	%oil	%water	%mud
BHT	<u>89</u>	°F Gravity		°API D@		°F Corrected Gravity	
RW		@		°F Chlorides		ppm Recovery	Chlorides <u>3,000</u> ppm System

(A) Initial Hydrostatic Mud	AK-1	Alpine	<u>1492</u>	PSI Recorder No.	<u>3024</u>	T-On Location	<u>14:30</u>
(B) First Initial Flow Pressure			<u>18</u>	PSI (depth)	<u>3034</u>	T-Started	<u>16:14</u>
(C) First Final Flow Pressure			<u>33</u>	PSI Recorder No.	<u>132054</u>	T-Open	<u>18:00</u>
(D) Initial Shut-in Pressure			<u>731</u>	PSI (depth)	<u>3060</u>	T-Pulled	<u>21:00</u>
(E) Second Initial Flow Pressure			<u>17</u>	PSI Recorder No.		T-Out	<u>22:50</u>
(F) Second Final Flow Pressure			<u>33</u>	PSI (depth)		T-Off Location	<u>23:00</u>
(G) Final Shut-in Pressure			<u>276</u>	PSI Initial Opening	<u>30</u>	Test	<u>700</u>
(Q) Final Hydrostatic Mud			<u>1429</u>	PSI Initial Shut-in	<u>60</u>	Jars	

Final Flow	<u>30</u>	Safety Joint	
Final Shut-in	<u>60</u>	Straddle	

TRILOBITE TESTING L.L.C. SHALL NOT BE LIABLE FOR DAMAGE OF ANY KIND OF THE PROPERTY OR PERSONNEL OF THE ONE FOR WHOM A TEST IS MADE, OR FOR ANY LOSS SUFFERED OR SUSTAINED, DIRECTLY OR INDIRECTLY, THROUGH THE USE OF ITS EQUIPMENT, OR ITS STATEMENTS OR OPINION CONCERNING THE RESULTS OF ANY TEST. TOOLS LOST OR DAMAGED IN THE HOLE SHALL BE PAID FOR AT COST BY THE PARTY FOR WHOM THE TEST IS MADE.

Approved By Bill Ree

Our Representative Dave Dangle

Circ. Sub	
Sampler	
Extra Packer	
Elec. Rec.	<u>X 150</u>
Mileage	<u>58.58</u>
Other	
TOTAL PRICE \$	<u>908</u>

TRILOBITE TESTING L.L.C.

OPERATOR : F.G. Holl Co. LLC DATE 12-13-00  
 WELL NAME: Fallis #1 KB 1790.00 ft TICKET NO: 13941 DST #2  
 LOCATION : 8-10-12 Osborne co KS GR 1785.00 ft FORMATION: B LKC  
 INTERVAL : 3064.00 To 3087.00 ft TD 3087.00 ft TEST TYPE: CONVENTIONAL

RECORDER DATA

Mins	Field	1	2	3	4	TIME DATA-----
PF 30 Rec.	13248	13248				PF Fr. 0612 to 0642 hr
SI 60 Range(Psi )	4250.0	4250.0	0.0	0.0	0.0	IS Fr. 0642 to 0742 hr
SF 30 Clock(hrs)	12	12				SF Fr. 0742 to 0812 hr
FS 60 Depth(ft )	3084.0	3084.0	0.0	0.0	0.0	FS Fr. 0812 to 0912 hr

	Field	1	2	3	4	
A. Init Hydro	1531.0	1524.0	0.0	0.0	0.0	T STARTED 0510 hr
B. First Flow	21.0	30.0	0.0	0.0	0.0	T ON BOTM 0609 hr
B1. Final Flow	21.0	40.0	0.0	0.0	0.0	T OPEN 0612 hr
C. In Shut-in	1035.0	1030.0	0.0	0.0	0.0	T PULLED 0912 hr
D. Init Flow	31.0	36.0	0.0	0.0	0.0	T OUT 1045 hr
E. Final Flow	31.0	42.0	0.0	0.0	0.0	
F. Fl Shut-in	993.0	1006.0	0.0	0.0	0.0	TOOL DATA-----
G. Final Hydro	1478.0	1524.0	0.0	0.0	0.0	Tool Wt. 1000.00 lbs
Inside/Outside	I	I				Wt Set On Packer 30000.00 lbs
						Wt Pulled Loose 35000.00 lbs
						Initial Str Wt 30000.00 lbs
						Unseated Str Wt 30000.00 lbs
						Bot Choke 0.75 in
						Hole Size 7.78 in
						D Col. ID 0.00 in
						D. Pipe ID 3.80 in
						D.C. Length 0.00 ft
						D.P. Length 3054.00 ft

RECOVERY

Tot Fluid 5.00 ft of 0.00 ft in DC and 5.00 ft in DP  
 5.00 ft of Drilling mud  
 0.00 ft of  
 0.00 ft of  
 0.00 ft of  
 0.00 ft of  
 0.00 ft of  
 0.00 ft of

SALINITY 0.00 P.P.M. A.P.I. Gravity 0.00

BLOW DESCRIPTION

Initial Flow:  
 Weak steady 1/4" blow  
 Final Flow:  
 Weak- Died in 20 minutes.

MUD DATA-----

Mud Type	Chemical
Weight	9.30 lb/c
Vis.	46.00 S/L
W.L.	9.60 in3
F.C.	0.00 in
Mud Drop	

Amt. of fill 0.00 ft  
 Btm. H. Temp. 90.00 F

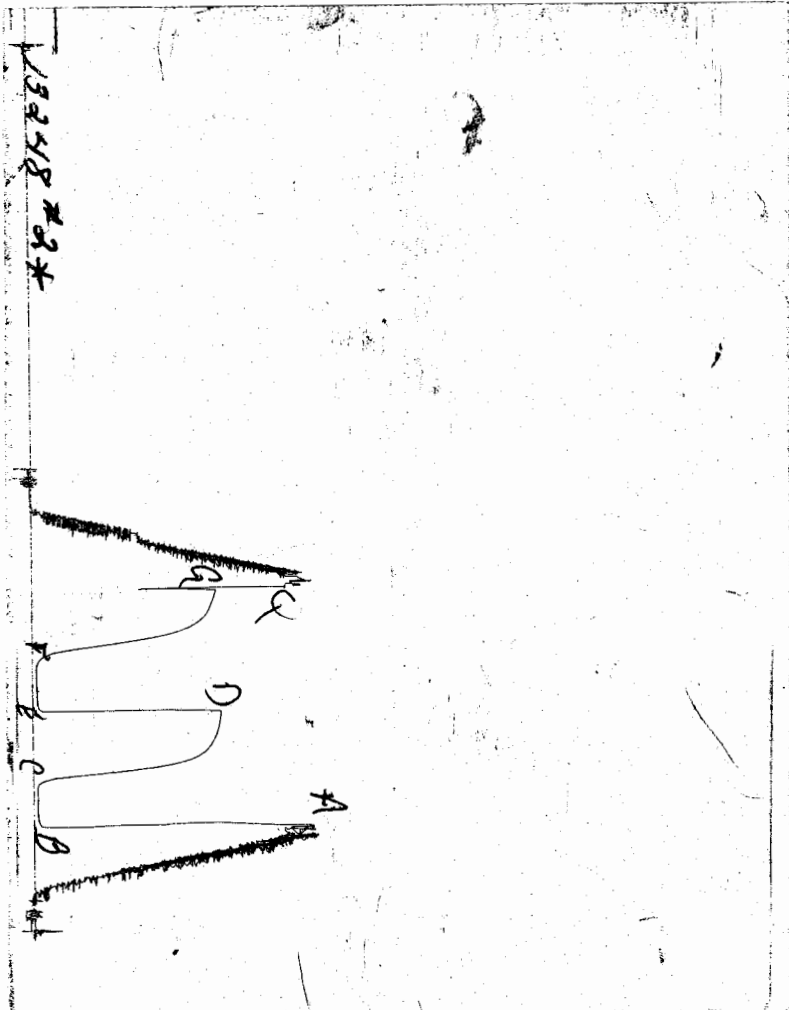
Hole Condition  
 % Porosity 0.00  
 Packer Size 6.75 in  
 No. of Packers 2  
 Cushion Amt. 0.00  
 Cushion Type  
 Reversed Out  
 Tool Chased

SAMPLES:  
 SENT TO:

Tester Dan Bangle  
 Co. Rep. Bill Ree  
 Contr. Vonfeldt  
 Rig # 1  
 Unit #  
 Pump T.

Test Successful: Y

CHART PAGE



This is a photocopy of the actual AK-1 recorder chart

# TRILOBITE TESTING L.L.C.

P.O. Box 362 • Hays, Kansas 67601

N<sup>o</sup> 13941

## Test Ticket

Well Name & No. <u>Fallis #1</u>	Test No. <u>2</u>	Date <u>12-13-00</u>
Company <u>F.G. Hall Co. LLC</u>	Zone Tested <u>"B" LLC</u>	
Address _____	Elevation <u>1790</u> KB <u>1785</u> GL	
Co. Rep / Geo. <u>Bill Ree</u>	Cont. <u>Venfeldt #1</u>	Est. Ft. of Pay _____ Por. _____ %
Location: Sec. <u>8</u> Twp. <u>10</u> Rge. <u>12</u>	Co. <u>Osborne</u> State <u>Ks</u>	
No. of Copies _____	Distribution Sheet (Y, N) _____	Turnkey (Y, N) _____ Evaluation (Y, N) _____

Interval Tested <u>3064 - 3087</u>	Initial Str Wt./Lbs. <u>30,000</u>	Unseated Str Wt./Lbs. <u>30,000</u>
Anchor Length <u>23</u>	Wt. Set Lbs. <u>30,000</u>	Wt. Pulled Loose/Lbs. <u>35,000</u>
Top Packer Depth <u>3059</u>	Tool Weight <u>1000</u>	
Bottom Packer Depth <u>3064</u>	Hole Size — 7 7/8" _____	Rubber Size — 6 3/4" _____
Total Depth <u>3087</u>	Wt. Pipe Run _____	Drill Collar Run _____
Mud Wt. <u>9.3</u> LCM _____ Vis. <u>46</u> WL <u>9.6</u>	Drill Pipe Size <u>4.5 XH</u>	Ft. Run <u>3054</u>
Blow Description <u>I.F. Weak steady 1/4" blow.</u>		

F.F. Weak - Died in 20 min.

Recovery — Total Feet <u>5</u>	GIP _____	Ft. in DC _____	Ft. in DP <u>5</u>
Rec. <u>5</u> Feet Of <u>D.M.</u>	%gas _____	%oil _____	%water _____ %mud _____
Rec. _____ Feet Of _____	%gas _____	%oil _____	%water _____ %mud _____
Rec. _____ Feet Of _____	%gas _____	%oil _____	%water _____ %mud _____
Rec. _____ Feet Of _____	%gas _____	%oil _____	%water _____ %mud _____
Rec. _____ Feet Of _____	%gas _____	%oil _____	%water _____ %mud _____
BHT <u>90</u> °F Gravity _____	°API D@ _____	°F Corrected Gravity _____	°API _____
RW _____ @ _____ °F	Chlorides _____ ppm	Recovery _____	Chlorides <u>5,000</u> ppm System

	AK-1	Alpine	PSI Recorder No.	T-On Location
(A) Initial Hydrostatic Mud	<u>1531</u>		<u>13254</u>	<u>04:10</u>
(B) First Initial Flow Pressure	<u>21</u>		(depth) <u>3068</u>	T-Started <u>05:10</u>
(C) First Final Flow Pressure	<u>21</u>		PSI Recorder No. <u>13248</u>	T-Open <u>06:12</u>
(D) Initial Shut-In Pressure	<u>1035</u>		PSI (depth) <u>3084</u>	T-Pulled <u>09:12</u>
(E) Second Initial Flow Pressure	<u>31</u>		PSI Recorder No. _____	T-Out <u>10:45</u>
(F) Second Final Flow Pressure	<u>31</u>		PSI (depth) _____	T-Off Location <u>11:00</u>
(G) Final Shut-in Pressure	<u>993</u>		PSI Initial Opening <u>30</u>	Test <u>700</u>
(Q) Final Hydrostatic Mud	<u>1478</u>		PSI Initial Shut-in <u>60</u>	Jars _____
			Final Flow <u>30</u>	Safety Joint _____
			Final Shut-in <u>60</u>	Straddle _____
				Circ. Sub _____
				Sampler _____
				Extra Packer _____
				Elec. Rec. _____

TRILOBITE TESTING L.L.C. SHALL NOT BE LIABLE FOR DAMAGE OF ANY KIND OF THE PROPERTY OR PERSONNEL OF THE ONE FOR WHOM A TEST IS MADE, OR FOR ANY LOSS SUFFERED OR SUSTAINED, DIRECTLY OR INDIRECTLY, THROUGH THE USE OF ITS EQUIPMENT, OR ITS STATEMENTS OR OPINION CONCERNING THE RESULTS OF ANY TEST. TOOLS LOST OR DAMAGED IN THE HOLE SHALL BE PAID FOR AT COST BY THE PARTY FOR WHOM THE TEST IS MADE.

Approved By Bill Ree

Our Representative Dan Bangle

Mileage 16 16  
 Other \_\_\_\_\_  
 TOTAL PRICE \$ 716



**TRILOBITE  
TESTING, INC**

# DRILL STEM TEST REPORT

F G Holl Co LLC

Fallis #1

P.O.Box 780167  
Wichita, Ks. 67278

8-10-12 Osborne KS

ATTN: Ew yn Nagel

Job Ticket: 13942

DST#: 3

Test Start: 2000.12.13 @ 16:35:00

## GENERAL INFORMATION:

Formation: "C" LKC

Deviated: No Whipstock: ft (KB)

Time Tool Opened: 17:46:25

Time Test Ended: 21:20:00

Test Type: Conventional Bottom Hole

Tester: Dan Bangle

Unit No: 11

Interval: 3088.00 ft (KB) To 3100.00 ft (KB) (TVD)

Total Depth: 3100.00 ft (KB)

Hole Diameter: 7.88 inches Hole Condition: Fair

Reference Elevations: 1790.00 ft (KB)

1785.00 ft (CF)

KB to GR/CF: 5.00 ft

Serial #: 3024 Inside

Press@RunDepth: 32.87 psig @ 3090.01 ft (KB)

Start Date: 2000.12.13

End Date: 2000.12.13

Start Time: 16:13:56

End Time: 23:04:55

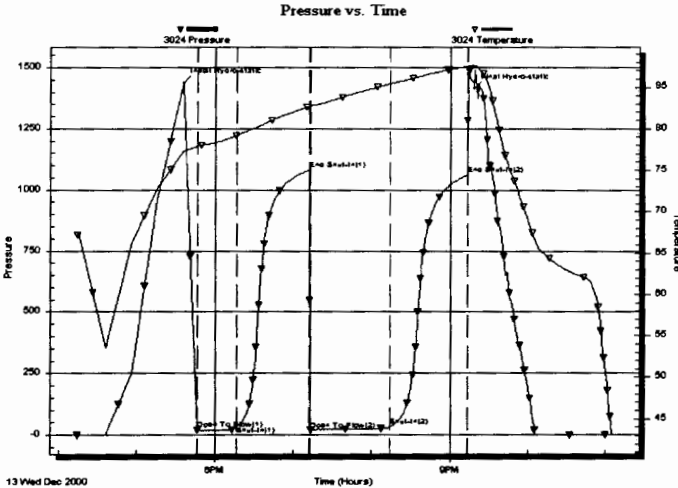
Capacity: 7000.00 psig

Last Calib.: 2000.12.12

Time On Btm: 2000.12.13 @ 17:35:55

Time Off Btm: 2000.12.13 @ 21:18:25

TEST COMMENT: IF-Weak building to 3" fair  
FF-Weak building to 3-1/8"



## PRESSURE SUMMARY

Time (Min.)	Pressure (psig)	Temp (deg F)	Annotation
82	1437.00	77.35	Initial Hydro-static
93	19.55	77.95	Open To Flow (1)
123	31.53	79.19	Shut-In(1)
178	1081.25	82.69	End Shut-In(1)
179	17.33	82.77	Open To Flow (2)
241	32.87	85.42	Shut-In(2)
299	1060.39	87.51	End Shut-In(2)
305	1414.79	87.61	Final Hydro-static

## Recovery

Length (ft)	Description	Volume (bbl)
1.00	Clean oil	0.01
29.00	Oil cut mud 20%o 80%em	0.41

## Gas Rates

	Choke (inches)	Pressure (psig)	Gas Rate (Mcf/d)

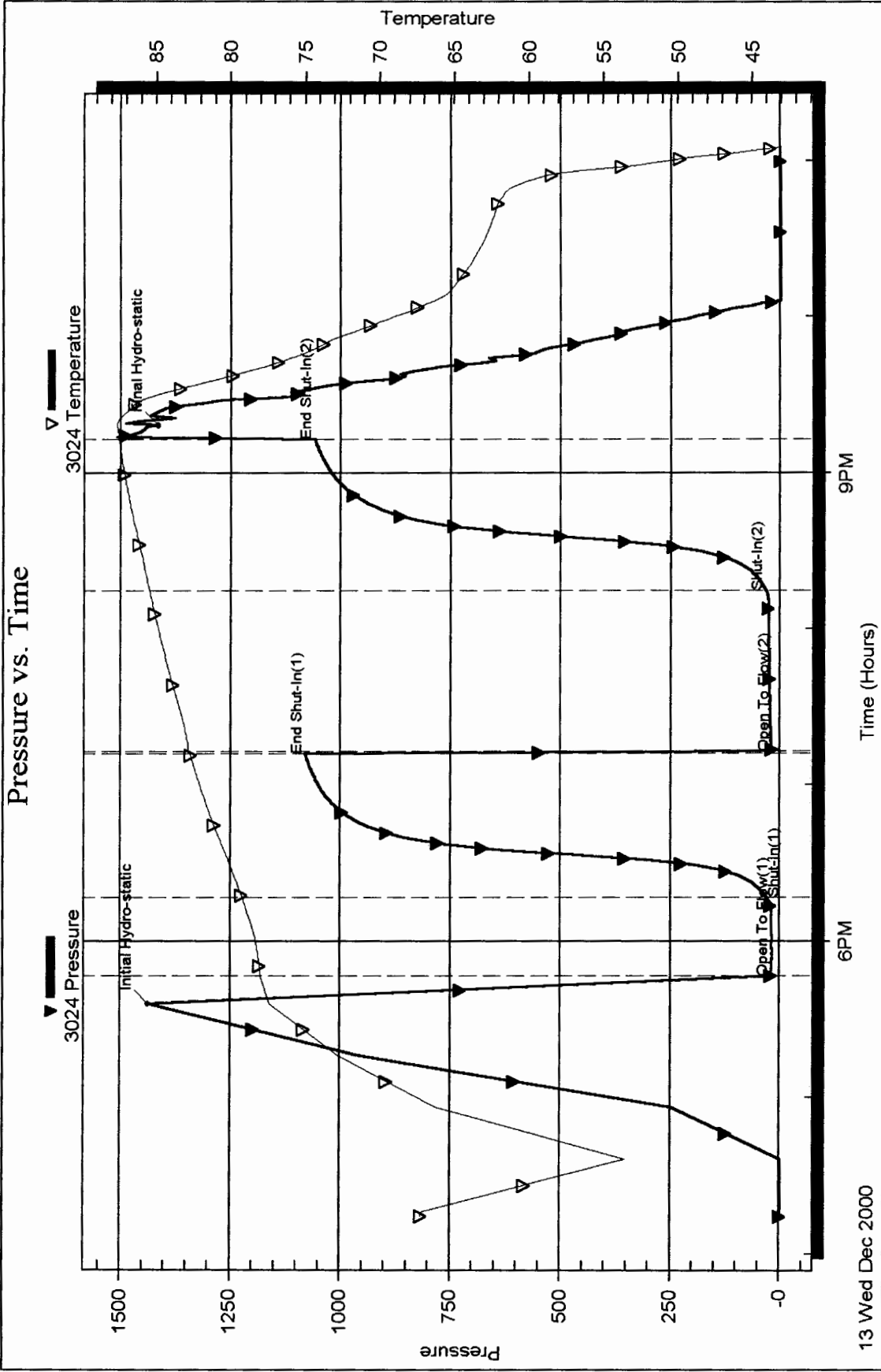
Serial #: 3024

Inside

F G Hall Co LLC

8-10-12 Osborne KS

### Pressure vs. Time



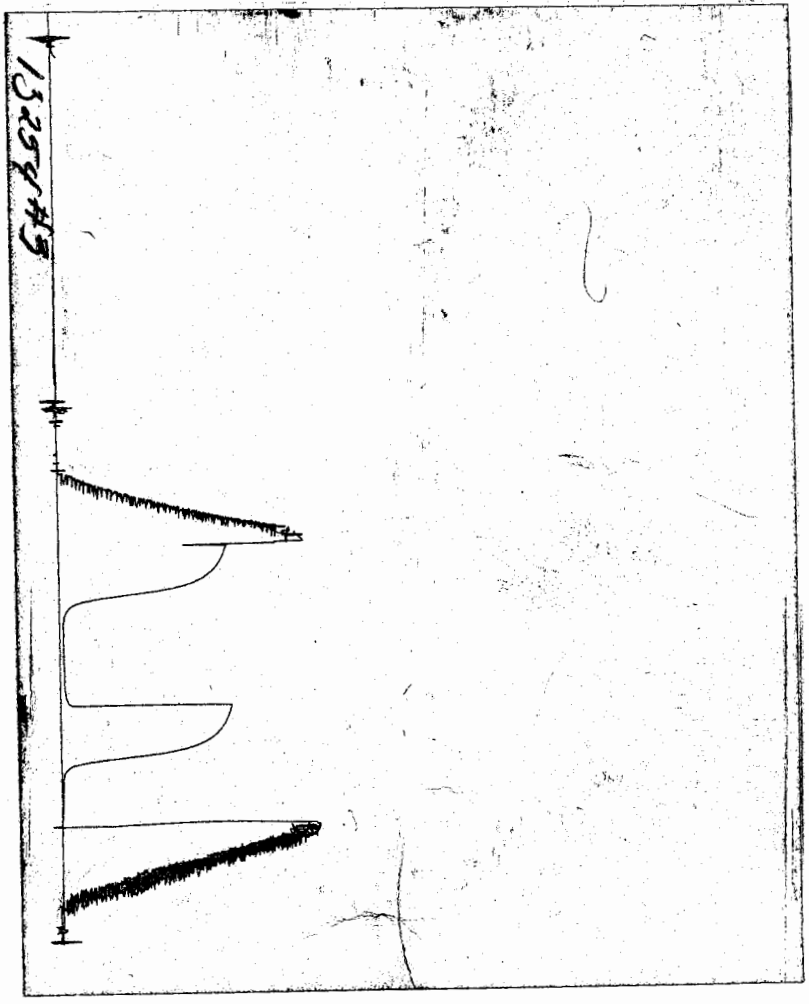
13 Wed Dec 2000

Trilobite Testing, Inc

Ref. No: 13942

Printed: 2000.12.14 @ 12:21:21 Page 2

CHART PAGE



This is a photocopy of the actual AK-1 recorder chart

# TRILOBITE TESTING L.L.C.

P.O. Box 362 • Hays, Kansas 67601

N<sup>o</sup> 13942

## Test Ticket

Well Name & No. <u>Fallis #1</u>	Test No. <u>3</u>	Date <u>12-13-00</u>
Company <u>F.G. Holl Co. LLC</u>	Zone Tested <u>"C" LKC</u>	
Address _____	Elevation <u>1790</u>	KB/ <u>1785</u> GL
Co. Rep / Geo. <u>Bill Ree</u>	Cont. <u>Vonfeldt #1</u>	Est. Ft. of Pay _____ Por. _____ %
Location: Sec. <u>8</u>	Twp. <u>10</u>	Rge. <u>12</u> Co. <u>Osborne</u> State <u>Ks</u>
No. of Copies _____	Distribution Sheet (Y, N) _____	Turnkey (Y, N) _____ Evaluation (Y, N) _____

Interval Tested <u>3088 — 3100</u>	Initial Str Wt./Lbs. <u>30,000</u>	Unseated Str Wt./Lbs. <u>30,000</u>
Anchor Length <u>12</u>	Wt. Set Lbs. <u>30,000</u>	Wt. Pulled Loose/Lbs. <u>35,000</u>
Top Packer Depth <u>3083</u>	Tool Weight <u>900</u>	
Bottom Packer Depth <u>3088</u>	Hole Size — <u>7 7/8"</u>	Rubber Size — <u>6 3/4"</u>
Total Depth <u>3100</u>	Wt. Pipe Run _____	Drill Collar Run _____
Mud Wt. <u>9.3</u> LCM _____ Vis. <u>46</u> WL <u>9.6</u>	Drill Pipe Size <u>4.5 XH</u>	Ft. Run <u>3084</u>
Blow Description <u>I.F. Weak - building to 3" fair blow.</u>		

E.F. Weak - building to 3 1/8" fair blow

Recovery — Total Feet <u>30</u>	GIP <u>60</u>	Ft. in DC _____	Ft. in DP <u>30</u>
Rec. <u>1</u> Feet Of <u>CO</u>	%gas _____ %oil _____	%water _____	%mud _____
Rec. <u>29</u> Feet Of <u>OCM</u>	%gas <u>20</u> %oil _____	%water <u>80</u>	%mud _____
Rec. _____ Feet Of _____	%gas _____ %oil _____	%water _____	%mud _____
Rec. _____ Feet Of _____	%gas _____ %oil _____	%water _____	%mud _____
Rec. _____ Feet Of _____	%gas _____ %oil _____	%water _____	%mud _____
BHT <u>87</u> °F Gravity _____	°API D@ _____	°F Corrected Gravity _____	°API _____
RW _____ @ _____	°F Chlorides _____	ppm Recovery _____	Chlorides <u>5,000</u> ppm System

	AK-1	Alpine			
(A) Initial Hydrostatic Mud	<u>1437</u>	PSI	Recorder No. <u>3024</u>	T-On Location <u>16:00</u>	35 16:40
(B) First Initial Flow Pressure	<u>19</u>	PSI	(depth) <u>3090</u>	T-Started <u>16:35</u>	
(C) First Final Flow Pressure	<u>31</u>	PSI	Recorder No. <u>13254</u>	T-Open <u>17:50</u>	
(D) Initial Shut-In Pressure	<u>1081</u>	PSI	(depth) <u>3095</u>	T-Pulled <u>21:20</u>	
(E) Second Initial Flow Pressure	<u>17</u>	PSI	Recorder No. _____	T-Out <u>23:15</u>	
(F) Second Final Flow Pressure	<u>32</u>	PSI	(depth) _____	T-Off Location <u>24:00</u>	
(G) Final Shut-in Pressure	<u>1060</u>	PSI	Initial Opening <u>30</u>	Test <u>700</u>	
(Q) Final Hydrostatic Mud	<u>1414</u>	PSI	Initial Shut-in <u>60</u>	Jars _____	
			Final Flow <u>60</u>	Safety Joint _____	
			Final Shut-in <u>60</u>	Straddle _____	
				Circ. Sub _____	
				Sampler _____	
				Extra Packer _____	
				Elec. Rec. <u>X</u> <u>150</u>	
				Mileage <u>16</u> <u>16</u>	
				Other _____	
				TOTAL PRICE \$ <u>866</u>	

TRILOBITE TESTING L.L.C. SHALL NOT BE LIABLE FOR DAMAGE OF ANY KIND OF THE PROPERTY OR PERSONNEL OF THE ONE FOR WHOM A TEST IS MADE, OR FOR ANY LOSS SUFFERED OR SUSTAINED, DIRECTLY OR INDIRECTLY, THROUGH THE USE OF ITS EQUIPMENT, OR ITS STATEMENTS OR OPINION CONCERNING THE RESULTS OF ANY TEST. TOOLS LOST OR DAMAGED IN THE HOLE SHALL BE PAID FOR AT COST BY THE PARTY FOR WHOM THE TEST IS MADE.

Approved By \_\_\_\_\_  
 Our Representative Dan Bangle