



WESTERN TESTING CO., INC.
FORMATION TESTING

TICKET No 9350

OK

P. O. BOX 1599 PHONE (316) 262-5861
WICHITA, KANSAS 67201

Elevation 1846 KB Formation Topeka Eff. Pay [check] Ft.

District Great Bend Ks Date 12-5-85 Customer Order No. [check]

COMPANY NAME Rainier Williamson Oil Co. Inc

ADDRESS 435 Page Court, 220W Douglas Wichita Ks 67202

LEASE AND WELL NO. Koelling "C" COUNTY Osborne STATE Ks Sec. 26 Twp. 10 Rge. 15 W

Mail Invoice To #1 KOELLING "C" Same as above No. Copies Requested 5

Co. Name Address No. Copies Requested 5

Mail Charts To Same as above No. Copies Requested 5

Formation Test No. #1 Interval Tested From 2746 ft. to 2766 ft. Total Depth 2766 ft.

Packer Depth 2741 ft. Size 6 5/8 in. Packer Depth - ft. Size - in.

Packer Depth 2746 ft. Size 6 5/8 in. Packer Depth - ft. Size - in.

Depth of Selective Zone Set -

Top Recorder Depth (Inside) 2755 ft. Recorder Number 13762 Cap. 3925

Bottom Recorder Depth (Outside) 2759 ft. Recorder Number 13759 Cap. 3900

Below Straddle Recorder Depth - ft. Recorder Number - Cap. -

Drilling Contractor Rainier Williamson DRB Rig #9 Drill Collar Length 118 I. D. 2.25 in.

Mud Type STARCH Viscosity 43 Weight Pipe Length - I. D. - in.

Weight 9.7 Water Loss 10.2 cc. Drill Pipe Length 2607 I. D. 3.8 in.

Chlorides 43,000 P.P.M. Test Tool Length 21 ft. Tool Size 5 1/2 OD in.

Jars: Make - Serial Number - Anchor Length 20 ft. Size 5 1/2 OD in.

Did Well Flow? - Reversed Out - Surface Choke Size 3/4 in. Bottom Choke Size 3/4 in.

Main Hole Size 7/8 in. Tool Joint Size 4 1/2 x 4 in.

Blow: 1st opening, weak blow, hose 1" into bucket, blow decreasing to a weak surface. Blow in 23 min.

2nd opening, weak surface blow, blow remain thru-out. Blow remain thru-out

Recovered 80 ft. of GAS IN Pipe

Recovered 50 ft. of OIL + GAS Cut Mud 17% GAS 18% OIL 3% WTR 62% Mud

Recovered - ft. of

Recovered - ft. of

Chlorides P.P.M. Sample Jars used Remarks:

Time On Location 5:30 A.M. P.M. Time Pick Up Tool 6:15 A.M. P.M. Time Off Location 1:20 A.M. P.M.

Time Set Packer(s) 8:20 A.M. P.M. Time Started Off Bottom 11:20 A.M. P.M. Maximum Temperature 95

Initial Hydrostatic Pressure (A) 1447 P.S.I.

Initial Flow Period (B) 30 Minutes 104 P.S.I. to (C) 57 P.S.I.

Initial Closed In Period (D) 30 Minutes 612 P.S.I.

Final Flow Period (E) 60 Minutes 66 P.S.I. to (F) 66 P.S.I.

Final Closed In Period (G) 60 Minutes 689 P.S.I.

Final Hydrostatic Pressure (H) 1437 P.S.I.

COMPANY TERMS Western Testing Co., Inc. shall not be liable for damages of any kind to the property or personnel of the one for whom a test is made or for any loss suffered or sustained directly or indirectly through the use of its equipment, of its statements or opinion concerning the results of any test. Tools lost or damaged in the hole shall be paid at cost by the party for whom the test is made. All charges subject to 12% interest after 60 days from date of invoice. Any expense incurred for collection will be added to the original amount.

Test Approved By Mike Engelbert Signature of Customer or his authorized representative
Western Representative Ronnie Mitchell 12-5-85 1325

FIELD INVOICE
Open Hole Test \$ 550
Misrun \$
Straddle Test \$
Jars \$
Selective Zone \$
Safety Joint \$
Standby \$
Evaluation \$
Extra Packer \$
Circ. Sub. \$
Mileage \$
Fluid Sampler \$
Extra Charts \$
Insurance \$
Telecopier \$
TOTAL \$

WESTERN TESTING CO., INC.

Pressure Data

Date 12-5

Test Ticket No. 9350

Recorder No. 13762

Capacity _____ Location _____ Ft.

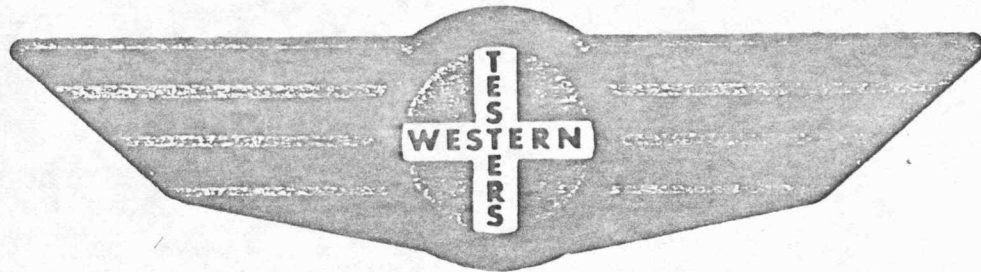
Clock No. _____ Elevation _____ Well Temperature _____ °F

Point	Pressure	Time Given	Time Computed
A Initial Hydrostatic Mud	<u>1434</u> P.S.I.		
B First Initial Flow Pressure	<u>56</u> P.S.I.	<u>30</u> Mins.	<u>30</u> Mins.
C First Final Flow Pressure	<u>56</u> P.S.I.	<u>30</u> Mins.	<u>33</u> Mins.
D Initial Closed-in Pressure	<u>607</u> P.S.I.	<u>60</u> Mins.	<u>60</u> Mins.
E Second Initial Flow Pressure	<u>66</u> P.S.I.	<u>60</u> Mins.	<u>63</u> Mins.
F Second Final Flow Pressure	<u>66</u> P.S.I.		
G Final Closed-in Pressure	<u>694</u> P.S.I.		
H Final Hydrostatic Mud	<u>1434</u> P.S.I.		

PRESSURE BREAKDOWN

Point Mins.	First Flow Pressure		Initial Shut-In		Second Flow Pressure		Final Shut-In	
	Breakdown:	of	Breakdown:	of	Breakdown:	of	Breakdown:	of
	<u>7</u> Inc.	<u>5</u> mins. and a	<u>12</u> Inc.	<u>3</u> mins. and a	<u>13</u> Inc.	<u>5</u> mins. and a	<u>22</u> Inc.	<u>3</u> mins. and a
	final inc. of <u>0</u> Min.		final inc. of <u>0</u> Min.		final inc. of <u>0</u> Min.		final inc. of <u>0</u> Min.	
Point Mins.	Press.	Point Minutes	Press.	Point Minutes	Press.	Point Minutes	Press.	
P 1 <u>0</u>	<u>56</u>	<u>0</u>	<u>56</u>	<u>0</u>	<u>66</u>	<u>0</u>	<u>66</u>	
P 2 <u>5</u>		<u>3</u>	<u>57</u>	<u>5</u>		<u>3</u>	<u>67</u>	
P 3 <u>10</u>		<u>6</u>	<u>61</u>	<u>10</u>		<u>6</u>	<u>70</u>	
P 4 <u>15</u>		<u>9</u>	<u>68</u>	<u>15</u>		<u>9</u>	<u>73</u>	
P 5 <u>20</u>		<u>12</u>	<u>81</u>	<u>20</u>		<u>12</u>	<u>77</u>	
P 6 <u>25</u>		<u>15</u>	<u>102</u>	<u>25</u>		<u>15</u>	<u>84</u>	
P 7 <u>30</u>	<u>56</u>	<u>18</u>	<u>145</u>	<u>30</u>		<u>18</u>	<u>93</u>	
P 8 <u>35</u>		<u>21</u>	<u>207</u>	<u>35</u>		<u>21</u>	<u>103</u>	
P 9 <u>40</u>		<u>24</u>	<u>297</u>	<u>40</u>		<u>24</u>	<u>115</u>	
P10 <u>45</u>		<u>27</u>	<u>406</u>	<u>45</u>		<u>27</u>	<u>132</u>	
P11 <u>50</u>		<u>30</u>	<u>549</u>	<u>50</u>		<u>30</u>	<u>152</u>	
P12 <u>55</u>		<u>33</u>	<u>607</u>	<u>55</u>		<u>33</u>	<u>176</u>	
P13 <u>60</u>		<u>36</u>		<u>60</u>	<u>66</u>	<u>36</u>	<u>209</u>	
P14 <u>65</u>		<u>39</u>		<u>65</u>		<u>39</u>	<u>248</u>	
P15 <u>70</u>		<u>42</u>		<u>70</u>		<u>42</u>	<u>294</u>	
P16 <u>75</u>		<u>45</u>		<u>75</u>		<u>45</u>	<u>353</u>	
P17 <u>80</u>		<u>48</u>		<u>80</u>		<u>48</u>	<u>413</u>	
P18 <u>85</u>		<u>51</u>		<u>85</u>		<u>51</u>	<u>478</u>	
P19 <u>90</u>		<u>54</u>		<u>90</u>		<u>54</u>	<u>540</u>	
P20 <u>95</u>		<u>57</u>		<u>95</u>		<u>57</u>	<u>607</u>	
<u>100</u>		<u>60</u>		<u>100</u>		<u>60</u>	<u>664</u>	
						<u>63</u>	<u>694</u>	

FORMATION TEST REPORT



Home Office:

Wichita, Kansas 67201

P.O. Box 1599

Phone (316) 262-5861

COMPANY RAINS & WILLIAMSON OIL CO INC LEASE & WELL NO. #1 KOELLING "C" SEC. 26 TWP. 10S RGE. 15W TEST NO. 1 DATE 12/5/85

WESTERN TESTING CO. INC.
SUBSURFACE PRESSURE SURVEY

DATE: 12-5-85 TICKET #9350
 CUSTOMER: RAINS & WILLIAMSON OIL CO INC LEASE: KOELLING "C"
 WELL: 1 TEST: 1 GEOLOGIST: M. ENGELBRECHT
 ELEVATION (KB): 1846 FORMATION: TOPEKA
 SECTION: 26 TOWNSHIP: 10S
 RANGE: 15W COUNTY: OSBORNE STATE: KANSAS
 GAUGE SN #13762 RANGE: 3925 CLOCK: 12

INTERVAL TEST FROM: 2746 FT TO: 2766 FT TOTAL DEPTH: 2766 FT
 DEPTH OF SELECTIVE ZONE: FT
 PACKER DEPTH: 2741 FT SIZE: 6 5/8 IN PACKER DEPTH: 2746 FT SIZE: 6 5/8 IN
 PACKER DEPTH: FT SIZE: IN PACKER DEPTH: FT SIZE: IN

DRILLING CONTRACTOR: RAINS/WILLIAMSON #9
 MUD TYPE: STARCH VISCOSITY: 43
 WEIGHT: 9.7 WATER LOSS (CC): 10.2
 CHLORIDES (P.P.M.): 43000
 JARS - MAKE: SERIAL NUMBER:
 DID WELL FLOW? REVERSED OUT?

DRILL COLLAR LENGTH: 118 FT I.D.: 2.25 IN
 WEIGHT PIPE LENGTH: FT I.D.: IN
 DRILL PIPE LENGTH: 2607 FT I.D.: 3.8 IN
 TEST TOOL LENGTH: 21 FT TOOL SIZE: 5 1/2 OD IN
 ANCHOR LENGTH: 20 FT SIZE: 5 1/2 OD IN
 SURFACE CHOKE SIZE: 3/4 IN BOTTOM CHOKE SIZE: 3/4 IN
 MAIN HOLE SIZE: 7 7/8 IN TOOL JOINT SIZE: 4 1/2 XH IN

BLOW: I.F.P. WEAK BLOW; HOSE 1" INTO BUCKET; BLOW
 DECREASING TO A WEAK SURFACE BLOW IN 23 MINUTES;
 BLOW REMAINED THROUGHOUT. F.F.P. WEAK SURFACE
 BLOW; BLOW REMAINED THROUGHOUT PERIOD.

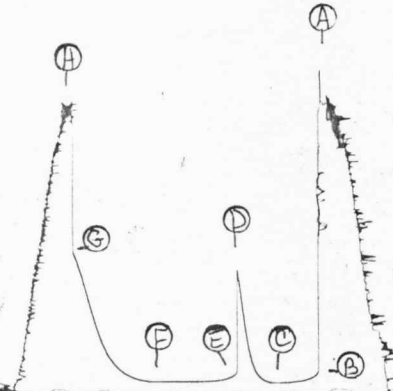
RECOVERED: 80 FT OF: GAS ABOVE FLUID.
 RECOVERED: 50 FT OF: OIL & GAS CUT MUD
 RECOVERED: FT OF: (17% GAS; 18% OIL; 3% WATER; 62% MUD).
 RECOVERED: FT OF:
 RECOVERED: FT OF:
 RECOVERED: FT OF:
 RECOVERED: FT OF:
 RECOVERED: FT OF:
 RECOVERED: FT OF:

REMARKS:

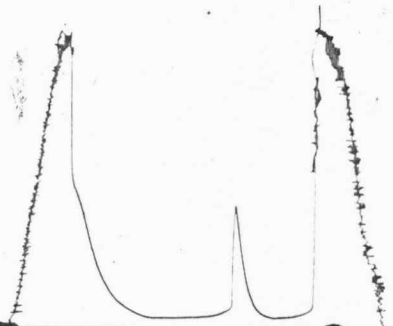
TIME SET PACKER(S): 8:20 AM TIME STARTED OFF BOTTOM: 11:20 AM
 WELL TEMPERATURE: 95 °F
 INITIAL HYDROSTATIC PRESSURE: (A) 1434 PSI
 INITIAL FLOW PERIOD MIN: 30 (B) 56 PSI TO (C) 56 PSI
 INITIAL CLOSED IN PERIOD MIN: 33 (D) 607 PSI
 FINAL FLOW PERIOD MIN: 60 (E) 66 PSI TO (F) 66 PSI
 FINAL CLOSED IN PERIOD MIN: 63 (G) 694 PSI
 FINAL HYDROSTATIC PRESSURE (H) 1434 PSI

13762
DST#1

4kt. #9350
I



4kt. #9350
O





WESTERN TESTING CO., INC.
FORMATION TESTING

TICKET N^o 9351

OK

P. O. BOX 1599 PHONE (316) 262-5861

Elevation 1846 KB

Formation KANSAS City

Eff. Pay Ft.

WICHITA, KANSAS 67201

District Great Bend KS Date 12-6-85 Customer Order No.

COMPANY NAME Rainey Williamson Oil Co Inc.

ADDRESS 435 Page Court, 220 W Douglas Wichita KS 67202

LEASE AND WELL NO. Koelling "C" - 1 COUNTY Osborne STATE KS Sec. 26 Twp. 10 Rge. 15W

Mail Invoice To #1 KOELLING "C" Same as above No. Copies Requested 5

Co. Name Address

Mail Charts To Same as above No. Copies Requested 5

Address

Formation Test No. #2 Interval Tested From 3028 ft. to 3058 ft. Total Depth 3058 ft.

Packer Depth 3023 ft. Size 6 5/8 in. Packer Depth — ft. Size — in.

Packer Depth 3028 ft. Size 6 5/8 in. Packer Depth — ft. Size — in.

Depth of Selective Zone Set —

Top Recorder Depth (Inside) 3032 ft. Recorder Number 13762 Cap. 3925

Bottom Recorder Depth (Outside) 3036 ft. Recorder Number 13759 Cap. 3900

Below Straddle Recorder Depth — ft. Recorder Number — Cap. —

Drilling Contractor Rainey Williamson P.O. #9 Drill Collar Length 118 I. D. 2.25 in.

Mud Type Starch Viscosity 47 Weight Pipe Length — I. D. — in.

Weight 10.0 Water Loss 12.0 cc. Drill Pipe Length 2889 I. D. 3.8 in.

Chlorides 42,000 P.P.M. Test Tool Length 21 ft. Tool Size 5 1/2 in.

Jars: Make — Serial Number — Anchor Length 30 ft. Size 5 1/2 in.

Did Well Flow? — Reversed Out — Surface Choke Size 3/4 in. Bottom Choke Size 3/4 in.

Main Hole Size 7 7/8 in. Tool Joint Size 4 1/2 x H in.

Blow / stopping, Weak Blow Hose 3" into Bucket Blow Remain Thru - 66 ft
2nd opening, Weak Surface Blow, Remain Thru - out

Recovered — ft. of

Recovered 150 ft. of Muddy Water with few oil specks 70% Mud 30% WTR

Recovered — ft. of

Recovered — ft. of

Recovered — ft. of

Chlorides 54,000 P.P.M. Sample Jars used — Remarks: (Tool slid 3' after opening we set on bottom for 20 min before it slid.)

Time On Location 8:45 A.M. Time Pick Up Tool 10:00 P.M. Time Off Location — A.M.

Time Set Packer(s) 10:55 A.M. Time Started Off Bottom 1:55 P.M. Maximum Temperature 102°

Initial Hydrostatic Pressure (A) 1672 P.S.I.

Initial Flow Period (B) 30 Minutes 66 P.S.I. to (C) 85 P.S.I.

Initial Closed In Period (D) 30 Minutes 486 P.S.I.

Final Flow Period (E) 60 Minutes 104 P.S.I. to (F) 104 P.S.I.

Final Closed In Period (G) 60 Minutes 486 P.S.I.

Final Hydrostatic Pressure (H) 1662 P.S.I.

COMPANY TERMS

Western Testing Co., Inc. shall not be liable for damages of any kind to the property or personnel of the one for whom a test is made or for any loss suffered or sustained directly or indirectly through the use of its equipment, of its statements or opinion concerning the results of any test. Tools lost or damaged in the hole shall be paid at cost by the party for whom the test is made.

All charges subject to 12% interest after 60 days from date of invoice. Any expense incurred for collection will be added to the original amount.

Test Approved By Nike Engelbrecht
Signature of Customer or his authorized representative

Western Representative Ronnie Mitchell 12-6-85
1325

FIELD INVOICE

Open Hole Test	\$ 550
Misrun	\$
Straddle Test	\$
Jars	\$
Selective Zone	\$
Safety Joint	\$
Standby	\$
Evaluation	\$
Extra Packer	\$
Circ. Sub.	\$
Mileage	\$
Fluid Sampler	\$
Extra Charts	\$
Insurance	\$
Telecopier	\$
TOTAL	\$

RECEIVED
DEC 10 1985

WESTERN TESTING CO., INC.

Pressure Data

Date 12-6

Test Ticket No. 9351

Recorder No. 13762

Capacity _____ Location _____ Ft.

Clock No. _____ Elevation _____ Well Temperature _____ °F

Point	Pressure	Time Given	Time Computed
A Initial Hydrostatic Mud	<u>1675</u> P.S.I.		
B First Initial Flow Pressure	<u>60</u> P.S.I.	<u>30</u> Mins.	<u>30</u> Mins.
C First Final Flow Pressure	<u>90</u> P.S.I.	<u>30</u> Mins.	<u>30</u> Mins.
D Initial Closed-in Pressure	<u>493</u> P.S.I.	<u>60</u> Mins.	<u>60</u> Mins.
E Second Initial Flow Pressure	<u>96</u> P.S.I.	<u>60</u> Mins.	<u>60</u> Mins.
F Second Final Flow Pressure	<u>106</u> P.S.I.		
G Final Closed-in Pressure	<u>491</u> P.S.I.		
H Final Hydrostatic Mud	<u>1632</u> P.S.I.		

PRESSURE BREAKDOWN

First Flow Pressure
Breakdown: 7 Inc.
of 5 mins. and a
final inc. of 0 Min.

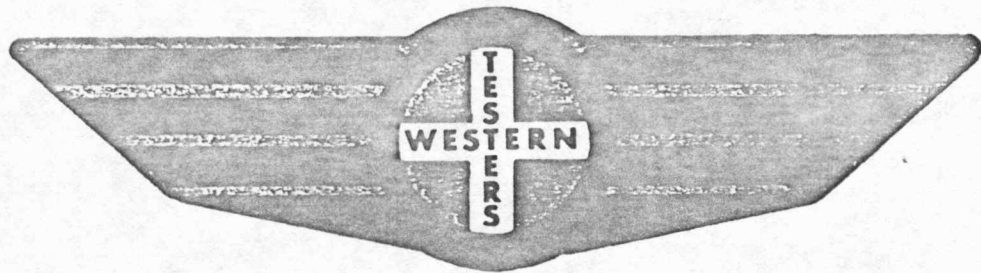
Initial Shut-In
Breakdown: 11 Inc.
of 3 mins. and a
final inc. of 0 Min.

Second Flow Pressure
Breakdown: 13 Inc.
of 5 mins. and a
final inc. of 0 Min.

Final Shut-In
Breakdown: 21 Inc.
of 3 mins. and a
final inc. of 0 Min.

Point Mins.	Press.	Point Minutes	Press.	Point Minutes	Press.	Point Minutes	Press.
P 1 0	<u>60</u>	0	<u>90</u>	0	<u>96</u>	0	<u>106</u>
P 2 5	<u>5</u>	3	<u>422</u>	5	<u>5</u>	3	<u>418</u>
P 3 10	<u>5</u>	6	<u>451</u>	10	<u>5</u>	6	<u>444</u>
P 4 15	<u>60</u>	9	<u>464</u>	15	<u>5</u>	9	<u>456</u>
P 5 20	<u>62</u> F.T.	12	<u>473</u>	20	<u>5</u>	12	<u>465</u>
P 6 25	<u>97</u>	15	<u>479</u>	25	<u>5</u>	15	<u>470</u>
P 7 30	<u>90</u>	18	<u>483</u>	30	<u>96</u>	18	<u>473</u>
P 8 35		21	<u>486</u>	35	<u>97</u>	21	<u>476</u>
P 9 40		24	<u>489</u>	40	<u>98</u>	24	<u>479</u>
P10 45		27	<u>491</u>	45	<u>100</u>	27	<u>482</u>
P11 50		30	<u>493</u>	50	<u>102</u>	30	<u>484</u>
P12 55		33		55	<u>104</u>	33	<u>486</u>
P13 60		36		60	<u>106</u>	36	<u>487</u>
P14 65		39		65		39	<u>488</u>
P15 70		42		70		42	<u>489</u>
P16 75		45		75		45	<u>490</u>
P17 80		48		80		48	<u>490</u>
P18 85		51		85		51	<u>490</u>
P19 90		54		90		54	<u>491</u>
P20 95		57		95		57	<u>491</u>
100		60		100		60	<u>491</u>

FORMATION TEST REPORT



Home Office:

Wichita, Kansas 67201

P.O. Box 1599

Phone (316) 262-5861

COMPANY RAINS & WILLIAMSON OIL CO INC LEASE & WELL NO. #1 KOELLING "C" SEC. 26 TWP. 10S RGE. 15W TEST NO. 2 DATE 12/6/85

WESTERN TESTING CO. INC.
SUBSURFACE PRESSURE SURVEY

DATE: 12-6-85 TICKET #9351
CUSTOMER: RAINS & WILLIAMSON OIL CO INC LEASE: KOELLING "C"
WELL: 1 TEST: 2 GEOLOGIST: M. ENGELBRECHT
ELEVATION (KB): 1846 FORMATION: KANSAS CITY
SECTION: 26 TOWNSHIP: 10S
RANGE: 15W COUNTY: OSBORNE STATE: KANSAS
GAUGE SN #13762 RANGE: 3925 CLOCK: 12

INTERVAL TEST FROM: 3028 FT TO: 3058 FT TOTAL DEPTH: 3058 FT
DEPTH OF SELECTIVE ZONE: FT
PACKER DEPTH: 3023 FT SIZE: 6 5/8 IN PACKER DEPTH: 3028 FT SIZE: 6 5/8 IN
PACKER DEPTH: FT SIZE: IN PACKER DEPTH: FT SIZE: IN

DRILLING CONTRACTOR: RAINS/WILLIAMSON #9
MUD TYPE: STARCH VISCOSITY: 47
WEIGHT: 10.0 WATER LOSS (CC): 12.0
CHLORIDES (P.P.M.): 42000

JARS - MAKE: SERIAL NUMBER:
DID WELL FLOW? REVERSED OUT?
DRILL COLLAR LENGTH: 118 FT I.D.: 2.25 IN
WEIGHT PIPE LENGTH: FT I.D.: IN
DRILL PIPE LENGTH: 2889 FT I.D.: 3.8 IN
TEST TOOL LENGTH: 21 FT TOOL SIZE: 5 1/2 OD IN
ANCHOR LENGTH: 30 FT SIZE: 5 1/2 OD IN
SURFACE CHOKE SIZE: 3/4 IN BOTTOM CHOKE SIZE: 3/4 IN
MAIN HOLE SIZE: 7 7/8 IN TOOL JOINT SIZE: 4 1/2 XH IN

BLOW: INITIAL FLOW PERIOD WEAK BLOW; HOSE 3 INCHES
INTO BUCKET; BLOW REMAINED THROUGHOUT PERIOD.
FINAL FLOW PERIOD WEAK SURFACE BLOW;
BLOW REMAINED THROUGHOUT PERIOD.

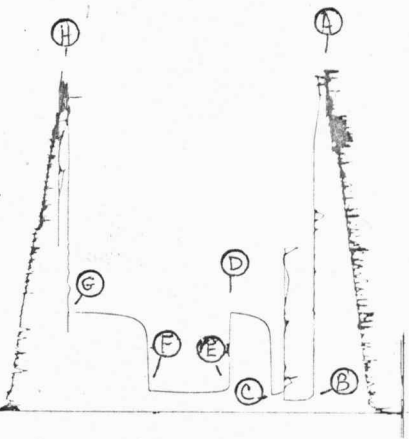
RECOVERED: 150 FT OF: MUDDY WATER WITH FEW OIL SPOTS
RECOVERED: FT OF: (70% MUD; 30% WATER).
RECOVERED: FT OF: CHLORIDES 54000 PPM.
RECOVERED: FT OF:
RECOVERED: FT OF:
RECOVERED: FT OF:
RECOVERED: FT OF:
RECOVERED: FT OF:
RECOVERED: FT OF:
RECOVERED: FT OF:

REMARKS: TOOL SLID 3 FEET AFTER OPENING.
WE SET ON BOTTOM FOR 20 MINUTES
BEFORE IT SLID.

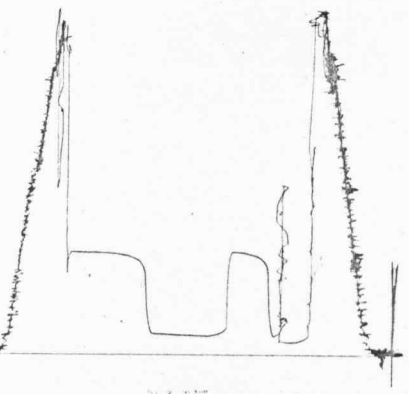
TIME SET PACKER(S): 10:55 AM TIME STARTED OFF BOTTOM: 1:55 PM
WELL TEMPERATURE: 102 °F
INITIAL HYDROSTATIC PRESSURE: (A) 1675 PSI
INITIAL FLOW PERIOD MIN: 30 (B) 60 PSI TO (C) 90 PSI
INITIAL CLOSED IN PERIOD MIN: 30 (D) 493 PSI
FINAL FLOW PERIOD MIN: 60 (E) 96 PSI TO (F) 106 PSI
FINAL CLOSED IN PERIOD MIN: 60 (G) 491 PSI
FINAL HYDROSTATIC PRESSURE (H) 1632 PSI

13762
DST#2

4bt. #9351
I



4bt. #9351
O





WESTERN TESTING CO., INC.
FORMATION TESTING

TICKET N^o 9352

OK

P. O. BOX 1599 WICHITA, KANSAS 67201
PHONE (316) 262-5861

Elevation 1846KB Formation Kansas City Eff. Pay Ft.

District Great Bend Ks Date 12-7-85 Customer Order No.

COMPANY NAME Rains & Williamson Oil Co Inc

ADDRESS 435 Page Court, 220 West Douglas Wichita Kansas 67202

LEASE AND WELL NO. Koelling C-#1 COUNTY Osborne STATE KS Sec. 26 Twp. 10 Rge. 15 W

Mail Invoice To #1 KOELLING "C" Same as above No. Copies Requested 5

Mail Charts To Same as above No. Copies Requested 5

Formation Test No. #3 Interval Tested From 3065 ft. to 3120 ft. Total Depth 3120 ft.

Packer Depth 3060 ft. Size 6 5/8 in. Packer Depth - ft. Size - in.

Packer Depth 3065 ft. Size 6 5/8 in. Packer Depth - ft. Size - in.

Depth of Selective Zone Set -

Top Recorder Depth (Inside) 3069 ft. Recorder Number 13762 Cap. 3925

Bottom Recorder Depth (Outside) 3073 ft. Recorder Number 13759 Cap. 3900

Below Straddle Recorder Depth - ft. Recorder Number - Cap. -

Drilling Contractor Rains & Williamson Delc Rig #9 Drill Collar Length 118 I. D. 2.25 in.

Mud Type STARCH Viscosity 47 Weight Pipe Length - I. D. - in.

Weight 10.0 Water Loss 12.0 cc. Drill Pipe Length 2926 I. D. 3.8 in.

Chlorides 42,000 P.P.M. Test Tool Length 21 ft. Tool Size 5 1/2 in.

Jars: Make - Serial Number - Anchor Length 55 ft. Size 5 1/2 in.

Did Well Flow? NO Reversed Out NO Surface Choke Size 3/4 in. Bottom Choke Size 3/4 in.

Main Hole Size 7 7/8 in. Tool Joint Size 4 1/2 in.

Blow: 1st opening, Weak Blow hose 1/2" into bucket, slowly decreasing too weak surface blow, died in 21 min

2nd opening, NO blow, flushed tool got surge, remain dead thru-out

Recovered 20 ft. of MUD

Recovered - ft. of -

Recovered - ft. of -

Recovered - ft. of -

Recovered - ft. of -

Chlorides - P.P.M. Sample Jars used 1 Remarks:

Time On Location 12:45 A.M. Time Pick Up Tool 1:30 P.M. Time Off Location 6:45 A.M.

Time Set Packer(s) 2:45 P.M. Time Started Off Bottom 4:45 P.M. Maximum Temperature 102

Initial Hydrostatic Pressure (A) 1574 P.S.I.

Initial Flow Period Minutes 30 (B) 57 P.S.I. to (C) 38 P.S.I.

Initial Closed In Period Minutes 30 (D) 467 P.S.I.

Final Flow Period Minutes 30 (E) 66 P.S.I. to (F) 57 P.S.I.

Final Closed In Period Minutes 30 (G) 458 P.S.I.

Final Hydrostatic Pressure (H) 1564 P.S.I.

COMPANY TERMS

Western Testing Co., Inc. shall not be liable for damages of any kind to the property or personnel of the one for whom a test is made or for any loss suffered or sustained directly or indirectly through the use of its equipment, of its statements or opinion concerning the results of any test. Tools lost or damaged in the hole shall be paid at cost by the party for whom the test is made.

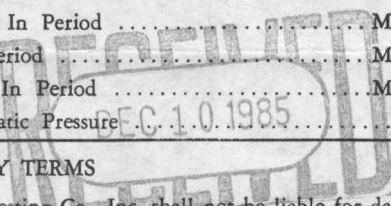
All charges subject to 12% interest after 60 days from date of invoice. Any expense incurred for collection will be added to the original amount.

Test Approved By: Trube Engelbrecht
Signature of Customer or his authorized representative

Western Representative: Ronnie Mitchell 12-7-85
1325

FIELD INVOICE

Open Hole Test	\$ 350
Misrun	\$
Straddle Test	\$
Jars	\$
Selective Zone	\$
Safety Joint	\$
Standby	\$
Evaluation	\$
Extra Packer	\$
Circ. Sub.	\$
Mileage	\$
Fluid Sampler	\$
Extra Charts	\$
Insurance	\$
Telecopier	\$
TOTAL	\$



WESTERN TESTING CO., INC.

Pressure Data

Date 12-7

Test Ticket No. 9352

Recorder No. 13762

Capacity _____ Location _____ Ft.

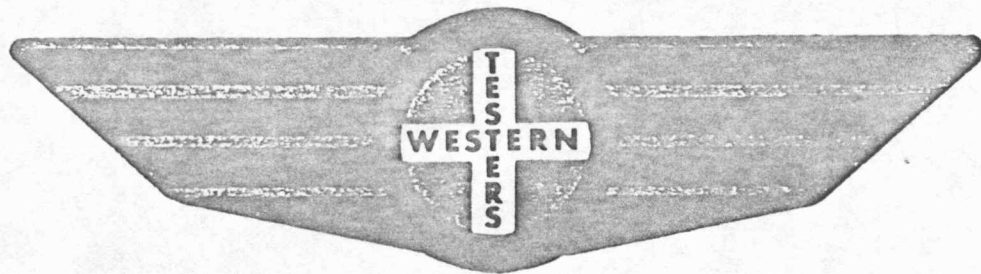
Clock No. _____ Elevation _____ Well Temperature _____ °F

Point	Pressure	Time Given	Time Computed
A Initial Hydrostatic Mud	<u>1592</u> P.S.I.		
B First Initial Flow Pressure	<u>42</u> P.S.I.	<u>30</u> Mins.	<u>30</u> Mins.
C First Final Flow Pressure	<u>42</u> P.S.I.	<u>(</u> Mins.	<u>30</u> Mins.
D Initial Closed-in Pressure	<u>470</u> P.S.I.	<u>(</u> Mins.	<u>30</u> Mins.
E Second Initial Flow Pressure	<u>57</u> P.S.I.	<u>(</u> Mins.	<u>30</u> Mins.
F Second Final Flow Pressure	<u>57</u> P.S.I.		
G Final Closed-in Pressure	<u>467</u> P.S.I.		
H Final Hydrostatic Mud	<u>1592</u> P.S.I.		

PRESSURE BREAKDOWN

Point Mins.	First Flow Pressure		Initial Shut-In		Second Flow Pressure		Final Shut-In	
	Breakdown:	Inc.	Breakdown:	Inc.	Breakdown:	Inc.	Breakdown:	Inc.
	of <u>5</u> mins. and a		of <u>3</u> mins. and a		of <u>5</u> mins. and a		of <u>3</u> mins. and a	
	final inc. of <u>0</u> Min.		final inc. of <u>0</u> Min.		final inc. of <u>0</u> Min.		final inc. of <u>0</u> Min.	
Point Mins.	Press.	Point Minutes	Press.	Point Minutes	Press.	Point Minutes	Press.	
P 1 0	<u>42</u>	0	<u>42</u>	0	<u>57</u>	0	<u>57</u>	
P 2 5	<u>(</u>	3	<u>53</u>	3	<u>57</u>	3	<u>62</u>	
P 3 10	<u>(</u>	6	<u>188</u>	6	<u>84</u>	6	<u>107</u>	
P 4 15	<u>(</u>	9	<u>294</u>	9	<u>68</u>	9	<u>218</u>	
P 5 20	<u>(</u>	12	<u>363</u>	12	<u>62</u>	12	<u>307</u>	
P 6 25	<u>(</u>	15	<u>401</u>	15	<u>59</u>	15	<u>370</u>	
P 7 30	<u>42</u>	18	<u>423</u>	18	<u>57</u>	18	<u>410</u>	
P 8 35		21	<u>440</u>	21		21	<u>432</u>	
P 9 40		24	<u>453</u>	24		24	<u>448</u>	
P 10 45		27	<u>466</u>	27		27	<u>459</u>	
P 11 50		30	<u>470</u>	30		30	<u>467</u>	
P 12 55		33		33		33		
P 13 60		36		36		36		
P 14 65		39		39		39		
P 15 70		42		42		42		
P 16 75		45		45		45		
P 17 80		48		48		48		
P 18 85		51		51		51		
P 19 90		54		54		54		
P 20 95		57		57		57		
100		60		60		60		

FORMATION TEST REPORT



Home Office:

Wichita, Kansas 67201

P.O. Box 1599

Phone (316) 262-5861

COMPANY RAINS & WILLIAMSON OIL CO INC LEASE & WELL NO. #1 KOELLING "C" SEC. 26 TWP. 10S RGE. 15W TEST NO. 3 DATE 12/7/85

WESTERN TESTING CO. INC.
SUBSURFACE PRESSURE SURVEY

DATE: 12-7-85 TICKET #9352
CUSTOMER: RAINS & WILLIAMSON OIL CO INC LEASE: KOELLING "C"
WELL: 1 TEST: 3 GEOLOGIST: M. ENGELBRECHT
ELEVATION (KB): 1846 FORMATION: KANSAS CITY
SECTION: 26 TOWNSHIP: 10S
RANGE: 15W COUNTY: OSBORNE STATE: KANSAS
GAUGE SN #13762 RANGE: 3925 CLOCK: 12

INTERVAL TEST FROM: 3065 FT TO: 3120 FT TOTAL DEPTH: 3120 FT
DEPTH OF SELECTIVE ZONE: FT
PACKER DEPTH: 3060 FT SIZE: 6 5/8 IN PACKER DEPTH: 3065 FT SIZE: 6 5/8 IN
PACKER DEPTH: FT SIZE: IN PACKER DEPTH: FT SIZE: IN

DRILLING CONTRACTOR: RAINS/WILLIAMSON #9
MUD TYPE: STARCH VISCOSITY: 47
WEIGHT: 10.0 WATER LOSS (CC): 12.0
CHLORIDES (P.P.M.): 40000
JARS - MAKE: SERIAL NUMBER:
DID WELL FLOW? NO REVERSED OUT? NO
DRILL COLLAR LENGTH: 118 FT I.D.: 2.25 IN
WEIGHT PIPE LENGTH: FT I.D.: IN
DRILL PIPE LENGTH: 2926 FT I.D.: 3.8 IN
TEST TOOL LENGTH: 21 FT TOOL SIZE: 5 1/2 OD IN
ANCHOR LENGTH: 55 FT SIZE: 5 1/2 OD IN
SURFACE CHOKE SIZE: 3/4 IN BOTTOM CHOKE SIZE: 3/4 IN
MAIN HOLE SIZE: 7 7/8 IN TOOL JOINT SIZE: 4 1/2 XH IN

BLOW: I.F.P. WEAK BLOW; HOSE 1/2" INTO BUCKET; SLOWLY
DECREASING TO WEAK SURFACE BLOW; DIED IN 21
MINUTES; REMAINED DEAD THROUGHOUT. F.F.P. NO
BLOW; FLUSHED TOOL; GOT SURGE; REMAINED DEAD.

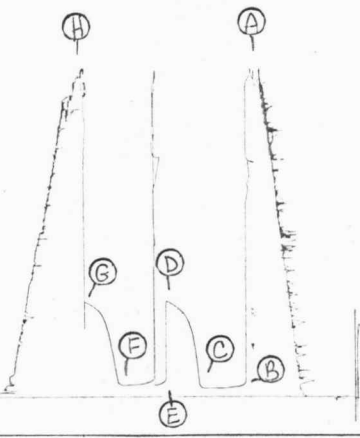
RECOVERED: 20 FT OF: MUD.
RECOVERED: FT OF:
RECOVERED: FT OF:
RECOVERED: FT OF:
RECOVERED: FT OF:
RECOVERED: FT OF:
RECOVERED: FT OF:
RECOVERED: FT OF:
RECOVERED: FT OF:
RECOVERED: FT OF:

REMARKS:

TIME SET PACKER(S): 2:45 AM TIME STARTED OFF BOTTOM: 4:45 AM
WELL TEMPERATURE: 102 °F
INITIAL HYDROSTATIC PRESSURE: (A) 1592 PSI
INITIAL FLOW PERIOD MIN: 30 (B) 42 PSI TO (C) 42 PSI
INITIAL CLOSED IN PERIOD MIN: 30 (D) 470 PSI
FINAL FLOW PERIOD MIN: 30 (E) 57 PSI TO (F) 57 PSI
FINAL CLOSED IN PERIOD MIN: 30 (G) 467 PSI
FINAL HYDROSTATIC PRESSURE (H) 1592 PSI

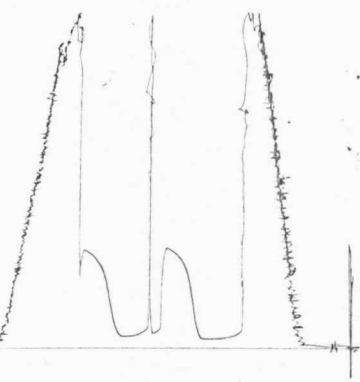
13762
DST#3

4kt. #9352
I



DST#3
13759

4kt. #9352
O





WESTERN TESTING CO., INC.
FORMATION TESTING

TICKET No 9353

P. O. BOX 1599 WICHITA, KANSAS 67201
PHONE (316) 262-5861

Elevation 1846 KB Formation Conglomerate Sand Eff. Pay

District Great Bend Kansas Date 12-8-85 Customer Order No.

COMPANY NAME Rains Williamson Oil Co Inc

ADDRESS 435 Page Court, 220 West Douglas Wichita Kansas 67202

LEASE AND WELL NO. Koelling C-#1 COUNTY Osborne STATE KS Sec. 26 Twp. 10 Rge. 15 U

Mail Invoice To #1 KOELLING "C" Same as above No. Copies Requested 5

Mail Charts To Same as above No. Copies Requested 5

Formation Test No. #4 Interval Tested From 3367 ft. to 3389 ft. Total Depth 3389 ft.

Packer Depth 3362 ft. Size 6 5/8 in. Packer Depth - ft. Size - in.

Packer Depth 3367 ft. Size 6 5/8 in. Packer Depth - ft. Size - in.

Depth of Selective Zone Set

Top Recorder Depth (Inside) 3377 ft. Recorder Number 13762 Cap. 3925

Bottom Recorder Depth (Outside) 3381 ft. Recorder Number 13759 Cap. 3800

Below Straddle Recorder Depth - ft. Recorder Number - Cap. -

Drilling Contractor Rains Williamson Del-Rig #9 Drill Collar Length 118 I. D. 2.25 in.

Mud Type STARCH Viscosity 42 Weight Pipe Length - I. D. - in.

Weight 9.2 Water Loss 15.2 cc. Drill Pipe Length 3228 I. D. 3.8 in.

Chlorides 28,000 P.P.M. Test Tool Length 21 ft. Tool Size 5 5/8 OD in.

Jars: Make - Serial Number - Anchor Length 22 ft. Size 5 5/8 OD in.

Did Well Flow? - Reversed Out - Surface Choke Size 3/4 in. Bottom Choke Size 3/4 in.

Main Hole Size 7 7/8 in. Tool Joint Size 4 5/8 in.

Blow 1st opening, Weak Blow Hose 1/2" into bucket, Blow Died in 15 min. Remain Dead Thru-out.

2nd opening, NO Blow, Flushed TOOL got surge, Remain Dead Thru-out.

Recovered - ft. of - Recovered 10' ft. of MUD

Recovered - ft. of - Recovered - ft. of - Recovered - ft. of -

Chlorides - P.P.M. Sample Jars used - Remarks: -

Time On Location 3:30 A.M. Time Pick Up Tool 5:15 P.M. Time Off Location 12:00 A.M.

Time Set Packer(s) 6:55 A.M. Time Started Off Bottom 8:55 P.M. Maximum Temperature 106

Initial Hydrostatic Pressure (A) 1692 P.S.I.

Initial Flow Period Minutes 30 (B) 66 P.S.I. to (C) 38 P.S.I.

Initial Closed In Period Minutes 30 (D) 66 P.S.I.

Final Flow Period Minutes 30 (E) 47 P.S.I. to (F) 47 P.S.I.

Final Closed In Period Minutes 30 (G) 95 P.S.I.

Final Hydrostatic Pressure (H) 1672 P.S.I.

COMPANY TERMS

Western Testing Co., Inc. shall not be liable for damages of any kind to the property or personnel of the one for whom a test is made or for any loss suffered or sustained directly or indirectly through the use of its equipment, of its statements or opinion concerning the results of any test. Tools lost or damaged in the hole shall be paid at cost by the party for whom the test is made.

All charges subject to 12% interest after 60 days from date of invoice. Any expense incurred for collection will be added to the original amount.

Test Approved By Signature of Customer or his authorized representative

Western Representative Ronnie Mitchell 1325

FIELD INVOICE

Table with 2 columns: Item, Amount. Includes Open Hole Test (\$550), Miscrun, Straddle Test, Jars, Selective Zone, Safety Joint, Standby, Evaluation, Extra Packer, Circ. Sub., Mileage, Fluid Sampler, Extra Charts, Insurance, Telecopier, TOTAL.

WESTERN TESTING CO., INC.
Pressure Data

Date 12-8

Test Ticket No. 9353

Recorder No. 13762

Capacity _____ Location _____ Ft.

Clock No. _____ Elevation _____ Well Temperature _____ °F

Point	Pressure		Time Given	Time Computed
A Initial Hydrostatic Mud	<u>1722</u> P.S.I.	Open Tool		M
B First Initial Flow Pressure	<u>43</u> P.S.I.	First Flow Pressure	<u>30</u> Mins.	<u>30</u> Mins.
C First Final Flow Pressure	<u>43</u> P.S.I.	Initial Closed-in Pressure	<u>(</u> Mins.	<u>27</u> Mins.
D Initial Closed-in Pressure	<u>65</u> P.S.I.	Second Flow Pressure	<u>)</u> Mins.	<u>30</u> Mins.
E Second Initial Flow Pressure	<u>48</u> P.S.I.	Final Closed-in Pressure	<u>)</u> Mins.	<u>30</u> Mins.
F Second Final Flow Pressure	<u>48</u> P.S.I.			
G Final Closed-in Pressure	<u>91</u> P.S.I.			
H Final Hydrostatic Mud	<u>1659</u> P.S.I.			

PRESSURE BREAKDOWN

First Flow Pressure
Breakdown: 7 Inc.
of 5 mins. and a
final inc. of 0 Min.

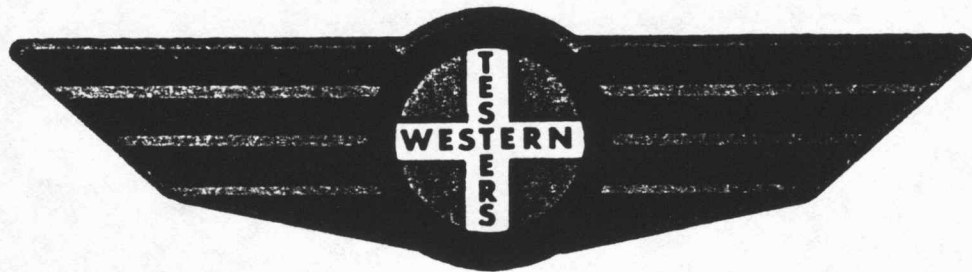
Initial Shut-In
Breakdown: 9 Inc.
of 3 mins. and a
final inc. of 0 Min.

Second Flow Pressure
Breakdown: 6 Inc.
of 5 mins. and a
final inc. of 0 Min.

Final Shut-In
Breakdown: 10 Inc.
of 3 mins. and a
final inc. of 0 Min.

Point Mins.	Press.	Point Minutes	Press.	Point Minutes	Press.	Point Minutes	Press.
P 1 0	<u>43</u>						
P 2 5	<u>(</u>	3	<u>43</u>	5	<u>48</u>	3	<u>48</u>
P 3 10	<u>(</u>	6	<u>44</u>	10	<u>48</u>	6	<u>48</u>
P 4 15	<u>(</u>	9	<u>44</u>	15	<u>53</u> F.T.	9	<u>49</u>
P 5 20	<u>(</u>	12	<u>45</u>	20	<u>51</u>	12	<u>51</u>
P 6 25	<u>(</u>	15	<u>47</u>	25	<u>51</u>	15	<u>55</u>
P 7 30	<u>43</u>	18	<u>50</u>	30	<u>48</u>	18	<u>62</u>
P 8 35		21	<u>54</u>	35		21	<u>70</u>
P 9 40		24	<u>58</u>	40		24	<u>78</u>
P10 45		27	<u>65</u>	45		27	<u>86</u>
P11 50		30		50		30	<u>91</u>
P12 55		33		55		33	
P13 60		36		60		36	
P14 65		39		65		39	
P15 70		42		70		42	
P16 75		45		75		45	
P17 80		48		80		48	
P18 85		51		85		51	
P19 90		54		90		54	
P19 95		57		95		57	
P20 100		60		100		60	

FORMATION TEST REPORT



Home Office:

Wichita, Kansas 67201

P.O. Box 1599

Phone (316) 262-5861

COMPANY RAINS & WILLIAMSON OIL CO., INC. LEASE & WELL NO. #1 KOELLING "C" SEC. 26 TWP. 10S RGE. 15W TEST NO. 4 DATE 12/8/85

SUBSURFACE PRESSURE SURVEY

DATE	: 12-8-85	TICKET	: 9353
CUSTOMER	: RAINS & WILLIAMSON OIL CO INC	LEASE	: KOELLING "C"
WELL	: 1 TEST: 4	GEOLOGIST	: M. ENGELBRECHT
ELEVATION	: 1846	FORMATION	: CONGLOMERATE SD
SECTION	: 26	TOWNSHIP	: 15W
RANGE	: 15W	COUNTY	: OSBORNE
GAUGE SN#	: 13762	STATE	: KANSAS
		RANGE	: 3925
		CLOCK	: 12

INTERVAL FROM	: 3367	TO	: 3389	TOTAL DEPTH	: 3389
DEPTH OF SELECTIVE ZONE	:				
PACKER DEPTH	: 3362	SIZE	: 6 5/8		
PACKER DEPTH	: 3367	SIZE	: 6 5/8		
PACKER DEPTH	:	SIZE	:		
PACKER DEPTH	:	SIZE	:		

DRILLING CON.	: RAINS & WILLIAMSON RIG #9		
MUD TYPE	: STARCH	VISCOSITY	: 42
WEIGHT	: 9.2	WATER LOSS (CC)	: 15.2
CHLORIDES (PPM)	: 28000		
JARS-MAKE	:	SERIAL NUMBER	:
DID WELL FLOW ?	:	REVERSED OUT ?	:

DRILL COLLAR LENGTH	: 118	FT	I.D. inch	: 2.25
WEIGHT PIPE LENGTH	: 0	FT	I.D. inch	: 0.00
DRILL PIPE LENGTH	: 3228	FT	I.D. inch	: 3.80
TEST TOOL LENGTH	: 21	FT	TOOL SIZE	: 5.50
ANCHOR LENGTH	: 22	FT	ANCHOR SIZE	: 5.50
SURFACE CHOKE SIZE	: .75	IN	BOTTOM CHOKE SIZE	: .75
MAIN HOLE SIZE	: 7 7/8	IN	TOOL JOINT SIZE	: 4 1/2

BLOW COMMENT #1 : INITIAL FLOW PERIOD WEAK BLOW; HOSE 1/2" INTO BUCKET;
 BLOW COMMENT #2 : BLOW DIED IN 15 MINUTES; REMAINED DEAD THROUGHOUT.
 BLOW COMMENT #3 : FINAL FLOW PERIOD NO BLOW; FLUSHED TOOL; GOT SURGE;
 BLOW COMMENT #4 : REMAINED DEAD THROUGHOUT PERIOD.

RECOVERED	: 10	FT OF:	MUD.	0.1 Barrels
RECOVERED	: 0	FT OF:		0.0 Barrels
RECOVERED	: 0	FT OF:		0.0 Barrels
RECOVERED	: 0	FT OF:		0.0 Barrels
RECOVERED	: 0	FT OF:		0.0 Barrels
RECOVERED	: 0	FT OF:		0.0 Barrels
RECOVERED	: 0	FT OF:		0.0 Barrels
RECOVERED	: 0	FT OF:		0.0 Barrels
RECOVERED	: 0	FT OF:		0.0 Barrels
Total Barrels =	0.1	Total Production =		3.4 Bpd

REMARK 1 :
 REMARK 2 :
 REMARK 3 :
 REMARK 4 :

SET PACKER(S)	: 6:55 PM	TIME STARTED OFF BOTTOM	: 8:55 PM
WELL TEMPERATURE	: 106		
INITIAL HYDROSTATIC PRESSURE		(A)	1722
INITIAL FLOW PERIOD	MIN: 30	(B)	43 PSI TO (C) : 43
INITIAL CLOSED IN PERIOD	MIN: 27	(D)	65
FINAL FLOW PERIOD	MIN: 30	(E)	48 PSI TO (F) : 48
FINAL CLOSED IN PERIOD	MIN: 30	(G)	91
FINAL HYDROSTATIC PRESSURE		(H)	1659

Pressure Transient Report

DATA FILE.....
COMPANY.....RAINS & WILLIAMSON OIL CO INC
DATE OF TEST.....12-8-85
FIELD NAME.....KOELLING "C"
WELL NAME.....1
LOCATION.....OSBORNE-KANSAS
JOB NUMBER.....9353
GAUGE NUMBER.....13762
GAUGE DEPTH.....3389

COMMENTS

START UP TIME (mo/da/yr) (hr:min:sec)
 12./8/85. 6.: 55.: 0.

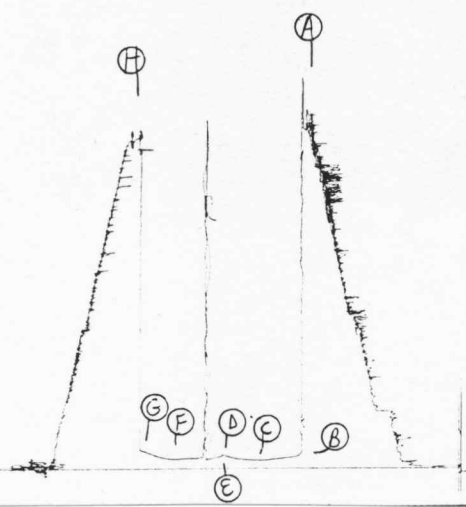
COMPANY : RAINS & WILLIAMSON OIL CO INC FIELD : KOELLING "C"
 WELL : 1 JOB # : 9353
 LOG # : 13762 DEPTH : 3389
 HOURS/DAY : 12/ 8

#	REAL TIME HR:MIN:SEC	ELAPSE TIME MINS	ELAPSE TIME HOURS	PRESSURE PSIG	TEMP DEG F	DELTA P (Po-Pi)	DP/DT Psi/hr
	6:55: 0	0	0.000	43.00	106.0	0.00	80.31
	7: 0: 0	5	0.083	43.00	106.0	0.00	0.00
	7: 5: 0	10	0.167	43.00	106.0	0.00	0.00
	7:10: 0	15	0.250	43.00	106.0	0.00	0.00
	7:15: 0	20	0.333	43.00	106.0	0.00	0.00
	7:20: 0	25	0.417	43.00	106.0	0.00	0.00
	7:25: 0	30	0.500	43.00	106.0	0.00	0.00
	7:28: 0	33	0.550	43.00	106.0	0.00	0.00
	7:31: 0	36	0.600	44.00	106.0	1.00	20.08
	7:34: 0	39	0.650	44.00	106.0	1.00	0.00
	7:37: 0	42	0.700	45.00	106.0	2.00	20.08
	7:40: 0	45	0.750	47.00	106.0	4.00	40.16
	7:43: 0	48	0.800	50.00	106.0	7.00	59.65
	7:46: 0	51	0.850	54.00	106.0	11.00	80.31
	7:49: 0	54	0.900	58.00	106.0	15.00	79.53
	7:52: 0	57	0.950	65.00	106.0	22.00	140.55
	7:57: 0	62	1.034	48.00	106.0	5.00	-203.60
	8: 2: 0	67	1.117	48.00	106.0	5.00	0.00
	8: 7: 0	72	1.200	53.00	106.0	10.00	60.24
	8:12: 0	77	1.284	51.00	106.0	8.00	-23.81
	8:17: 0	82	1.367	51.00	106.0	8.00	0.00
	8:22: 0	87	1.450	48.00	106.0	5.00	-36.14
	8:25: 0	90	1.500	48.00	106.0	5.00	0.00
	8:28: 0	93	1.550	48.00	106.0	5.00	0.00
	8:31: 0	96	1.600	49.00	106.0	6.00	20.08
	8:34: 0	99	1.650	51.00	106.0	8.00	40.16
	8:37: 0	102	1.700	55.00	106.0	12.00	80.31
	8:40: 0	105	1.750	62.00	106.0	19.00	137.85
	8:43: 0	108	1.800	70.00	106.0	27.00	160.63
	8:46: 0	111	1.850	78.00	106.0	35.00	160.63
	8:49: 0	114	1.900	86.00	106.0	43.00	160.63
	8:52: 0	117	1.950	91.00	106.0	48.00	100.39

13762
DST#4

TKT # 9353

I



13759
DST#4

TKT # 9353

O

