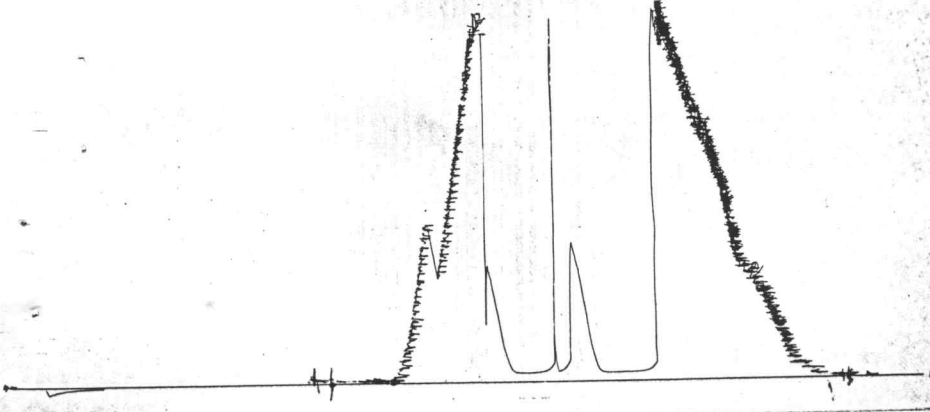


Site # 14001

0

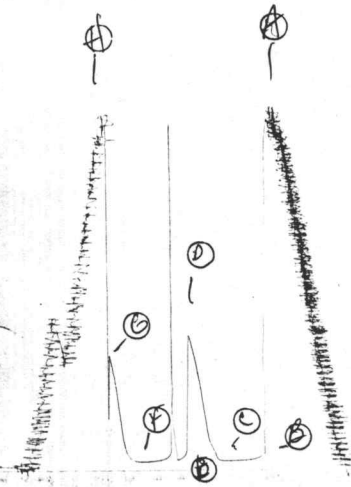
0



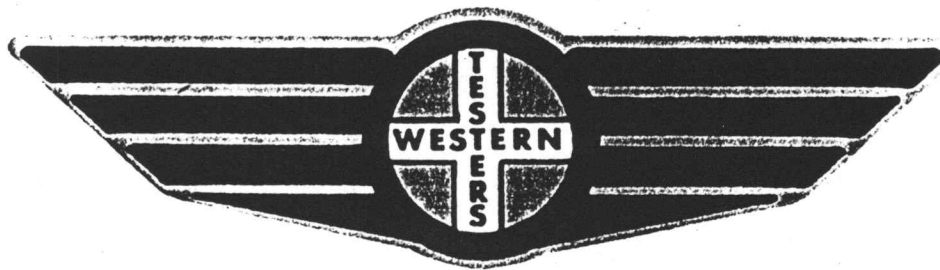
It # 14001

I

13547x



FORMATION TEST REPORT



Home Office:

Wichita, Kansas 67201

P.O. Box 1599

Phone (316) 262-5861

WESTERN TESTING CO. INC.
SUBSURFACE PRESSURE SURVEY

DATE : 7-13-88 TICKET : 14001
CUSTOMER : ENERGY EXPLORATION INC. LEASE : B. H. WERTH
WELL : #1 TEST: 1 GEOLOGIST : K ROBERTS
ELEVATION : - FORMATION : LANSING B
SECTION : 15 TOWNSHIP : 10S
RANGE : 26W COUNTY : SHERIDAN STATE : KANSAS
GAUGE SN# : 13547 RANGE : 4200 CLOCK : 12

INTERVAL FROM : 3901 TO : 3919 TOTAL DEPTH : 3919

DEPTH OF SELECTIVE ZONE :

PACKER DEPTH : 3886 SIZE : 6.63
PACKER DEPTH : 3901 SIZE : 6.63
PACKER DEPTH : SIZE :
PACKER DEPTH : SIZE :

DRILLING CON. : WARRIOR RIG 1
MUD TYPE : CHEMICAL VISCOSITY : 41
WEIGHT : 9.1 WATER LOSS (CC) : 10.4
CHLORIDES (PPM) : 7000
JARS-MAKE : - SERIAL NUMBER : -
DID WELL FLOW ? : - REVERSED OUT ? : -

DRILL COLLAR LENGTH : 0 FT I.D. inch : 0.00
WEIGHT PIPE LENGTH : 0 FT I.D. inch : 0.00
DRILL PIPE LENGTH : 3881 FT I.D. inch : 3.80
TEST TOOL LENGTH : 20 FT TOOL SIZE : 5.50
ANCHOR LENGTH : 18 FT ANCHOR SIZE : 5.50
SURFACE CHOKE SIZE : .75 IN BOTTOM CHOKE SIZE : .75
MAIN HOLE SIZE : 7.875 IN TOOL JOINT SIZE : 4.5 XH

BLOW COMMENT #1 : INITIAL FLOW-WEAK SURFACE BLOW-DIED IN 15 MINUTES.
BLOW COMMENT #2 : FINAL FLOW-NO BLOW-FLUSHED TOOL-GOOD SURGE-NO BLOW.
BLOW COMMENT #3 :
BLOW COMMENT #4 :

RECOVERED : 5 FT OF: OIL SPOTTED MUD
OIL LESS THAN 1%

Total Barrels Fluid = 0.07
Total Fluid Prod Rate = 1.68 BFPD
Indicated Oil Rate = 0.07 BOPD
Indicated Wtr Rate = 0.17 BWPD

REMARK 1 :
REMARK 2 :
REMARK 3 :
REMARK 4 :

SET PACKER(S) : 8:20 PM TIME STARTED OFF BOTTOM : 10:20 PM
WELL TEMPERATURE : 119
INITIAL HYDROSTATIC PRESSURE (A) 1908
INITIAL FLOW PERIOD MIN: 30 (B) 77 PSI TO (C) : 42
INITIAL CLOSED IN PERIOD MIN: 27 (D) 734
FINAL FLOW PERIOD MIN: 30 (E) 84 PSI TO (F) : 36
FINAL CLOSED IN PERIOD MIN: 27 (G) 623
FINAL HYDROSTATIC PRESSURE (H) 1886

WESTERN TESTING CO. INC.
WICHITA-KANSAS

Pressure Transient Report

COMPANY : ENERGY EXPLORATION INC.
RIG : SHERIDAN-KANSAS
FIELD : B. H. WERTH
WELL : #1
DATE : 7-13-88
GAUGE NO : 13547

OPERATIONAL COMMENTS

FLUSHED TOOL FINAL FLOW

COMPANY : ENERGY EXPLORATION INC.
 WELL : #1
 GAUGE # : 13547
 DATE : 13/ 7/88

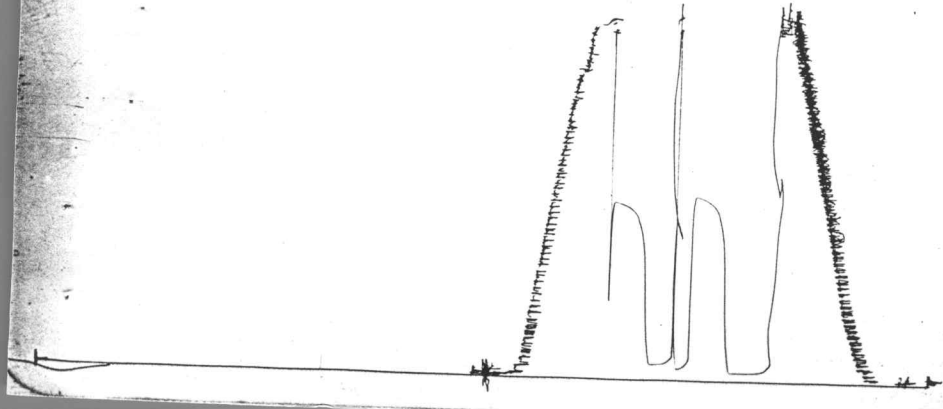
FIELD : B. H. WERTH
 JOB # : 14001
 DEPTH : 3919
 TEST : FLUSHED TOOL FINAL FLOW

DATA No.	REAL TIME HR:MN:SS	ELAPSE TIME DELTA HOURS	PRESSURE PSIG	TEMP DEG F	DELTA P Pi-P(i-1)
1	3:20: 0	0.000	77.000	119.00	0.000
2	8:24:59	0.083	55.000	119.00	-22.000
3	8:30: 0	0.167	49.000	119.00	-6.000
4	8:35: 0	0.250	43.000	119.00	-6.000
5	8:39:59	0.333	42.000	119.00	-1.000
6	8:45: 0	0.417	42.000	119.00	0.000
7	8:50: 0	0.500	42.000	119.00	0.000
8	8:53: 0	0.550	43.000	119.00	1.000
9	8:56: 0	0.600	79.000	119.00	36.000
10	8:59: 0	0.650	124.000	119.00	45.000
11	9: 2: 0	0.700	214.000	119.00	90.000
12	9: 5: 0	0.750	359.000	119.00	145.000
13	9: 8: 0	0.800	493.000	119.00	134.000
14	9:11: 0	0.850	613.000	119.00	120.000
15	9:14: 0	0.900	701.000	119.00	88.000
16	9:17: 0	0.950	734.000	119.00	33.000
17	9:18: 0	0.967	84.000	119.00	-650.000
18	9:21:59	1.033	52.000	119.00	-32.000
19	9:27: 0	1.117	46.000	119.00	-6.000
20	9:32: 0	1.200	57.000	119.00	11.000
21	9:36:59	1.283	42.000	119.00	-15.000
22	9:42: 0	1.367	39.000	119.00	-3.000
23	9:47: 0	1.450	36.000	119.00	-3.000
24	9:50: 0	1.500	36.000	119.00	0.000
25	9:53: 0	1.550	36.000	119.00	0.000
26	9:56: 0	1.600	44.000	119.00	8.000
27	9:59: 0	1.650	58.000	119.00	14.000
28	10: 2: 0	1.700	100.000	119.00	42.000
29	10: 5: 0	1.750	230.000	119.00	130.000
30	10: 8: 0	1.800	394.000	119.00	164.000
31	10:11: 0	1.850	530.000	119.00	136.000
32	10:14: 0	1.900	623.000	119.00	93.000

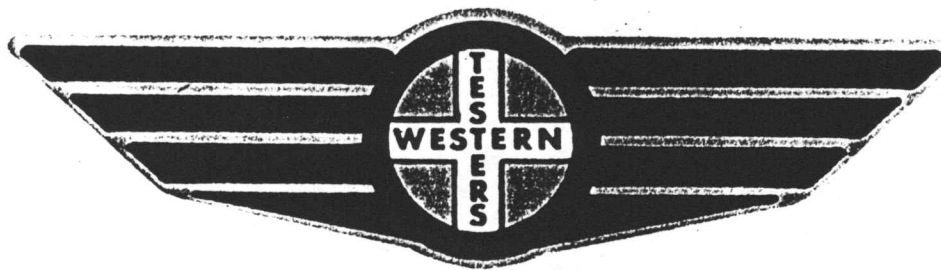
WESTERN TESTING CO. INC.

JK # 14002

0



FORMATION TEST REPORT



Home Office:

Wichita, Kansas 67201

P.O. Box 1599

Phone (316) 262-5861

WESTERN TESTING CO. INC.
SUBSURFACE PRESSURE SURVEY

DATE : 7-14-88 TICKET : 14002
CUSTOMER : ENERGY EXPLORATION INC. LEASE : B. H. WERTH
WELL : #1 TEST: 2 GEOLOGIST : K ROBERTS
ELEVATION : 2602 GL FORMATION : LANSING D
SECTION : 15 TOWNSHIP : 10S
RANGE : 26W COUNTY : SHERIDAN STATE : KANSAS
GAUGE SN# : 13547 RANGE : 4200 CLOCK : 12

INTERVAL FROM : 3919 TO : 3935 TOTAL DEPTH : 3935

DEPTH OF SELECTIVE ZONE :
PACKER DEPTH : 3914 SIZE : 6.63
PACKER DEPTH : 3919 SIZE : 6.63
PACKER DEPTH : SIZE :
PACKER DEPTH : SIZE :

DRILLING CON. : WARRIOR RIG 1
MUD TYPE : CHEMICAL VISCOSITY : 41
WEIGHT : 9.1 WATER LOSS (CC) : 10.4
CHLORIDES (PPM) : 7000
JARS-MAKE : - SERIAL NUMBER : -
DID WELL FLOW ? : - REVERSED OUT ? : -

DRILL COLLAR LENGTH : 0 FT I.D. inch : 0.00
WEIGHT PIPE LENGTH : 0 FT I.D. inch : 0.00
DRILL PIPE LENGTH : 3899 FT I.D. inch : 3.80
TEST TOOL LENGTH : 20 FT TOOL SIZE : 5.50
ANCHOR LENGTH : 16 FT ANCHOR SIZE : 5.50
SURFACE CHOKE SIZE : .75 IN BOTTOM CHOKE SIZE : .75
MAIN HOLE SIZE : 7.875 IN TOOL JOINT SIZE : 4.5 XH

BLOW COMMENT #1 : INITIAL FLOW-VERY WEAK BLOW-DIED IN 10 MINUTES.
BLOW COMMENT #2 : FINAL FLOW-NO BLOW-FLUSHED TOOL-GOOD SURGE-NO BLOW.
BLOW COMMENT #3 :
BLOW COMMENT #4 :

RECOVERED : 30 FT OF: MUDDY WATER

CHLORIDES: 25000 PPM

Total Barrels Fluid = 0.42
Total Fluid Prod Rate = 10.10 BFPD
Indicated Wtr Rate = 4.04 BWPD

REMARK 1 :
REMARK 2 :
REMARK 3 :
REMARK 4 :

SET PACKER(S) : 8:00 AM

TIME STARTED OFF BOTTOM : 10:00 AM

WELL TEMPERATURE : 119

INITIAL HYDROSTATIC PRESSURE

INITIAL FLOW PERIOD MIN: 30

INITIAL CLOSED IN PERIOD MIN: 33

FINAL FLOW PERIOD MIN: 30

FINAL CLOSED IN PERIOD MIN: 33

FINAL HYDROSTATIC PRESSURE

(A) 1928
(B) 79 PSI TO (C) : 39
(D) 948
(E) 86 PSI TO (F) : 48
(G) 914
(H) 1878

WESTERN TESTING CO. INC.
WICHITA-KANSAS

Pressure Transient Report

COMPANY : ENERGY EXPLORATION INC.
RIG : SHERIDAN-KANSAS
FIELD : B. H. WERTH
WELL : #1
DATE : 7-14-88
GAUGE NO : 13547

OPERATIONAL COMMENTS

FLUSHED TOOL FINAL FLOW

COMPANY : ENERGY EXPLORATION INC.
WELL : #1
GAUGE # : 13547
DATE : 14/ 7/88

FIELD : B. H. WERTH
JOB # : 14002
DEPTH : 3935
TEST : FLUSHED TOOL FINAL FLOW

DATA No.	REAL TIME HR:MN:SS	ELAPSE TIME DELTA HOURS	PRESSURE PSIG	TEMP DEG F	DELTA P Pi-P(i-1)
1	8: 0: 0	0.000	79.000	119.00	0.000
2	8: 4: 59	0.083	52.000	119.00	-27.000
3	8: 10: 0	0.167	42.000	119.00	-10.000
4	8: 15: 0	0.250	39.000	119.00	-3.000
5	8: 19: 59	0.333	39.000	119.00	0.000
6	8: 25: 0	0.417	39.000	119.00	0.000
7	8: 30: 0	0.500	39.000	119.00	0.000
8	8: 33: 0	0.550	191.000	119.00	152.000
9	8: 36: 0	0.600	545.000	119.00	354.000
10	8: 39: 0	0.650	719.000	119.00	174.000
11	8: 42: 0	0.700	817.000	119.00	98.000
12	8: 45: 0	0.750	861.000	119.00	44.000
13	8: 48: 0	0.800	897.000	119.00	36.000
14	8: 51: 0	0.850	913.000	119.00	16.000
15	8: 54: 0	0.900	924.000	119.00	11.000
16	8: 57: 0	0.950	934.000	119.00	10.000
17	9: 0: 0	1.000	942.000	119.00	8.000
18	9: 2: 59	1.050	948.000	119.00	6.000
19	9: 4: 0	1.067	86.000	119.00	-862.000
20	9: 7: 59	1.133	51.000	119.00	-35.000
21	9: 13: 0	1.217	42.000	119.00	-9.000
22	9: 18: 0	1.300	64.000	119.00	22.000
23	9: 22: 59	1.383	50.000	119.00	-14.000
24	9: 28: 0	1.467	48.000	119.00	-2.000
25	9: 33: 0	1.550	48.000	119.00	0.000
26	9: 35: 59	1.600	252.000	119.00	204.000
27	9: 39: 0	1.650	516.000	119.00	264.000
28	9: 41: 59	1.700	685.000	119.00	169.000
29	9: 45: 0	1.750	771.000	119.00	86.000
30	9: 48: 0	1.800	822.000	119.00	51.000
31	9: 50: 59	1.850	852.000	119.00	30.000
32	9: 54: 0	1.900	869.000	119.00	17.000
33	9: 56: 59	1.950	886.000	119.00	17.000
34	10: 0: 0	2.000	899.000	119.00	13.000
35	10: 3: 0	2.050	908.000	119.00	9.000
36	10: 5: 59	2.100	914.000	119.00	6.000

WESTERN TESTING CO. INC.