

15-163-20750

State Geological Survey

WICHITA BRANCH  
KANSAS DRILLERS LOG

API No. 15 \_\_\_\_\_  
County \_\_\_\_\_ Number \_\_\_\_\_

Operator  
PICKRELL DRILLING COMPANY

Address  
205 LITWIN BLDG., WICHITA, KS. 67202

Well No. 1 Lease Name LOCKE D

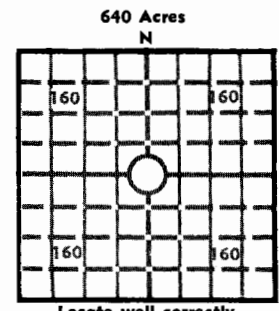
Footage Location  
feet from (N) (S) line \_\_\_\_\_ feet from (E) (W) line \_\_\_\_\_

Principal Contractor PICKRELL DRILLING COMPANY Geologist Hank Filson

Spud Date 10-25-77 Total Depth 3670 P.B.T.D. \_\_\_\_\_

Date Completed 11-01-77 Oil Purchaser \_\_\_\_\_

S. 24 T. 10S R. 16W E  
Loc. SE SW NW  
County \_\_\_\_\_ Rocks \_\_\_\_\_



Locate well correctly  
Elev.: Gr. 2013  
DF 2015 KB 2018

CASING RECORD

Report of all strings set — surface, intermediate, production, etc.

Purpose of string	Size hole drilled	Size casing set (in O.D.)	Weight lbs/ft.	Setting depth	Type cement	Sacks	Type and percent additives
Surf. Casing		8 5/8		220		130	

LINER RECORD

PERFORATION RECORD

Top, ft.	Bottom, ft.	Sacks cement	Shots per ft.	Size & type	Depth interval

TUBING RECORD

Size	Setting depth	Packer set at

ACID, FRACTURE, SHOT, CEMENT SQUEEZE RECORD

Amount and kind of material used	Depth interval treated

INITIAL PRODUCTION

Date of first production	Producing method (flowing, pumping, gas lift, etc.)
RATE OF PRODUCTION PER 24 HOURS	Oil _____ bbls. Gas _____ MCF Water _____ bbls. Gas-oil ratio _____ CFPB
Disposition of gas (vented, used on lease or sold)	Producing interval (s)

INSTRUCTIONS: As provided in KCC Rule 82-2-125, within 90 days after completion of a well, one completed copy of this Drillers Log shall be transmitted to the State Geological Survey of Kansas, 4150 Monroe Street, Wichita, Kansas 67209. Copies of this form are available from the Conservation Division, State Corporation Commission, 3830 So. Meridian (P.O. Box 17027), Wichita, Kansas 66217. Phone AC 316-522-2206. If confidential custody is desired, please note Rule 82-2-125. Drillers Logs will be on open file in the Oil and Gas Division, State Geological Survey of Kansas, Lawrence, Kansas 66044.

Operator PICKRELL DRILLING COMPANY DESIGNATE TYPE OF COMP.: OIL, GAS, DRY HOLE, SWDW, ETC.: Dry Hole

Well No. 1 Lease Name LOCKE D

S 24 T 10S 16W E  
R W


**WELL LOG**

Show all important zones of porosity and contents thereof; cored intervals, and all drill-stem tests, including depth interval tested, cushion used, time tool open, flowing and shut-in pressures, and recoveries.

SHOW GEOLOGICAL MARKERS, LOGS RUN, OR OTHER DESCRIPTIVE INFORMATION.

FORMATION DESCRIPTION, CONTENTS, ETC.	TOP	BOTTOM	NAME	DEPTH
Post Rock	0	135		
Lime	135	223		
Shale	220	720		
Shale	720	740		
Shale	740	1140		
Shale & Lime	1140	1223		
Shale	1223	1261		
Shale & Lime	1261	1385		
Shale	1385	1770		
Shale & Lime	1770	1985		
Shale & Lime	1985	2210		
Shale & Lime	2210	2230		
Lime & Shale	2230	2420		
Lime & Shale	2420	2595		
Shale & Lime	2595	2755		
Shale & Lime	2755	2940		
Lime	2940	3085		
Lime & Shale	3085	3210		
Shale & Lime	3210	3310		
Lime	3310	3395		
Lime & Shale	3395	3500		
Shale & Lime	3500	3575		
Lime	3575	3655		
Lime	3655	3670		

USE ADDITIONAL SHEETS, IF NECESSARY, TO COMPLETE WELL RECORD.

Date Received	
	C. W. Sebitts <small>Signature</small>
	Partner <small>Title</small>
	11-08-77 <small>Date</small>

bhl-l