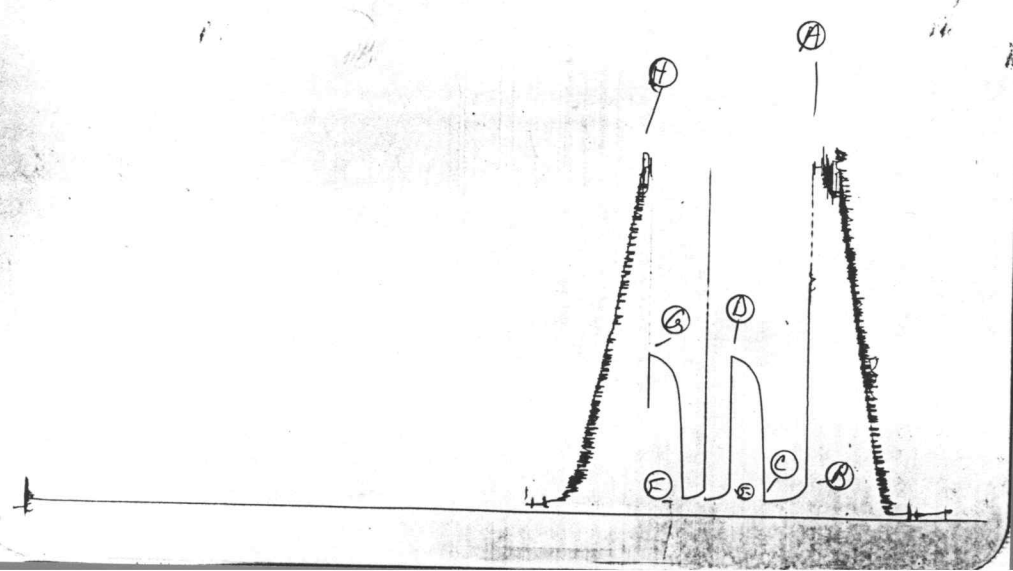


13551 RT. 13819

Energy Exp.
04T1

1

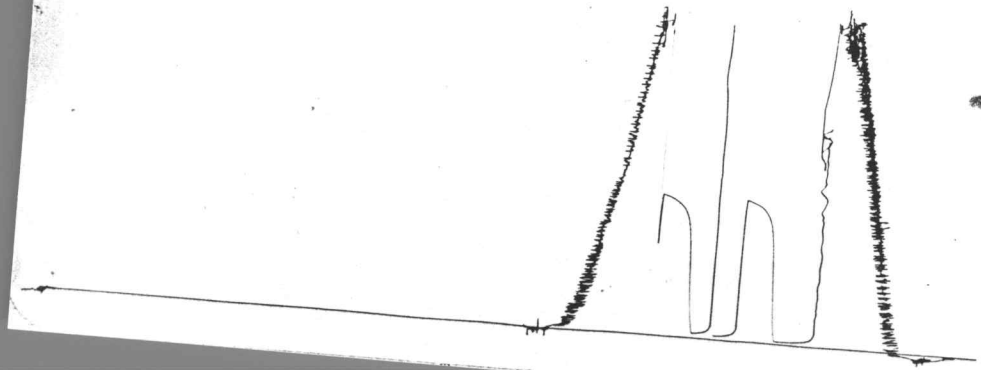


13629

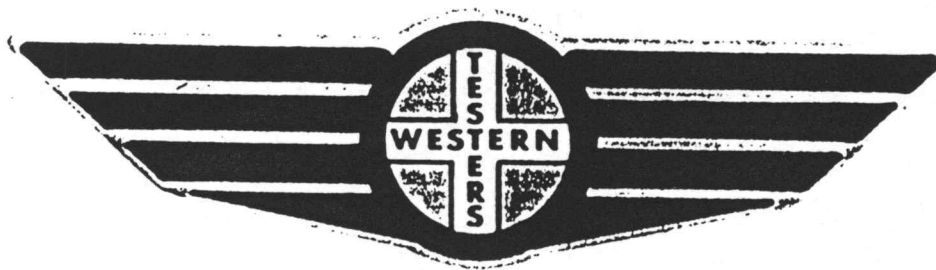
KT 13819

Energy Exp.
DST 1

0



FORMATION TEST REPORT



Home Office:

Wichita, Kansas 67201

P.O. Box 1599

Phone (316) 262-5861

WESTERN TESTING CO. INC.
SUBSURFACE PRESSURE SURVEY

DATE : 4-24-88
CUSTOMER : ENERGY EXPLORATION INC.
WELL : #3 TEST: 1
ELEVATION : 2558 KB
SECTION : 2
RANGE : 26W COUNTY : SHERIDAN
GAUGE SN# : 13551 RANGE : 4150
TICKET : 13819
LEASE : M J WERTH
GEOLOGIST : K. HOWARD
FORMATION : LANSING A
TOWNSHIP : 10S
STATE : KANSAS
CLOCK : 12

INTERVAL FROM : 3805 TO : 3830 TOTAL DEPTH : 3830
DEPTH OF SELECTIVE ZONE :
PACKER DEPTH : 3800 SIZE : 6.75
PACKER DEPTH : 3805 SIZE : 6.75
PACKER DEPTH : SIZE :
PACKER DEPTH : SIZE :

DRILLING CON. : H-30 #11
MUD TYPE : CHEMICAL VISCOSITY : 63
WEIGHT : 9.1 WATER LOSS (CC) : 13.6
CHLORIDES (PPM) : 8000
JARS-MAKE : - SERIAL NUMBER :
DID WELL FLOW ? : NO REVERSED OUT ? : NO

DRILL COLLAR LENGTH : 0 FT I.D. inch : 0.00
WEIGHT PIPE LENGTH : 0 FT I.D. inch : 0.00
DRILL PIPE LENGTH : 3785 FT I.D. inch : 3.80
TEST TOOL LENGTH : 20 FT TOOL SIZE : 5.50
ANCHOR LENGTH : 25 FT ANCHOR SIZE : 5.50
SURFACE CHOKE SIZE : .75 IN BOTTOM CHOKE SIZE : .75
MAIN HOLE SIZE : 7.875 IN TOOL JOINT SIZE : 4.5 XH

BLOW COMMENT #1 : INITIAL FLOW-WEAK BLOW-DEAD IN 20 MINUTES.
BLOW COMMENT #2 : FINAL FLOW-NO BLOW.
BLOW COMMENT #3 :
BLOW COMMENT #4 :

RECOVERED : 25 FT OF: DRILLING MUD

Total Barrels Fluid = 0.35
Total Fluid Prod Rate = 7.77 BFPD
Indicated Wtr Rate = 0.78 BWPD

REMARK 1 : FLUSHED TOOL FINAL FLOW.
REMARK 2 : SLID TOOL 8' TO BOTTOM AFTER TOOL OPENED.
REMARK 3 :
REMARK 4 :

SET PACKER(S) :	5:30 PM	TIME STARTED OFF BOTTOM :	7:30 PM
WELL TEMPERATURE :	113		
INITIAL HYDROSTATIC PRESSURE		(A)	1872
INITIAL FLOW PERIOD MIN:	30	(B)	122 PSI TO (C) : 53
INITIAL CLOSED IN PERIOD MIN:	30	(D)	837
FINAL FLOW PERIOD MIN:	35	(E)	106 PSI TO (F) : 56
FINAL CLOSED IN PERIOD MIN:	27	(G)	837
FINAL HYDROSTATIC PRESSURE		(H)	1859

WESTERN TESTING CO. INC.
WICHITA-KANSAS

Pressure Transient Report

COMPANY : ENERGY EXPLORATION INC.
RIG : SHERIDAN-KANSAS
FIELD : M J WERTH
WELL : #3
DATE : 4-24-88
GAUGE NO : 13551

OPERATIONAL COMMENTS

FLUSHED TOOL FINAL FLOW.
SLID TOOL 8' TO BOTTOM AFTER TOOL OPENED.

COMPANY : ENERGY EXPLORATION INC.
WELL : #3
GAUGE # : 13551
DATE : 24/ 4/88

FIELD : M J WERTH
JOB # : 13819
DEPTH : 3830
TEST : FLUSHED TOOL FINAL FLOW.

DATA No.	REAL TIME HR:MN:SS	ELAPSE TIME DELTA HOURS	PRESSURE PSIG	TEMP DEG F	DELTA P Pi-P(i-1)
1	5:30: 0	0.000	122.000	113.00	0.000
2	5:34:59	0.083	95.000	113.00	-27.000
3	5:40: 0	0.167	71.000	113.00	-24.000
4	5:45: 0	0.250	63.000	113.00	-8.000
5	5:49:59	0.333	56.000	113.00	-7.000
6	5:55: 0	0.417	54.000	113.00	-2.000
7	6: 0: 0	0.500	53.000	113.00	-1.000
8	6: 3: 0	0.550	408.000	113.00	355.000
9	6: 6: 0	0.600	632.000	113.00	224.000
10	6: 9: 0	0.650	719.000	113.00	87.000
11	6:12: 0	0.700	756.000	113.00	37.000
12	6:15: 0	0.750	785.000	113.00	29.000
13	6:18: 0	0.800	803.000	113.00	18.000
14	6:21: 0	0.850	816.000	113.00	13.000
15	6:24: 0	0.900	826.000	113.00	10.000
16	6:27: 0	0.950	834.000	113.00	8.000
17	6:30: 0	1.000	837.000	113.00	3.000
18	6:31: 0	1.017	106.000	113.00	-731.000
19	6:34:59	1.083	73.000	113.00	-33.000
20	6:40: 0	1.167	62.000	113.00	-11.000
21	6:45: 0	1.250	54.000	113.00	-8.000
22	6:49:59	1.333	87.000	113.00	33.000
23	6:55: 0	1.417	70.000	113.00	-17.000
24	7: 0: 0	1.500	60.000	113.00	-10.000
25	7: 4:59	1.583	56.000	113.00	-4.000
26	7: 7:59	1.633	475.000	113.00	419.000
27	7:10:59	1.683	665.000	113.00	190.000
28	7:13:59	1.733	735.000	113.00	70.000
29	7:16:59	1.783	767.000	113.00	32.000
30	7:19:59	1.833	789.000	113.00	22.000
31	7:22:59	1.883	805.000	113.00	16.000
32	7:25:59	1.933	820.000	113.00	15.000
33	7:28:59	1.983	830.000	113.00	10.000
34	7:31:59	2.033	837.000	113.00	7.000

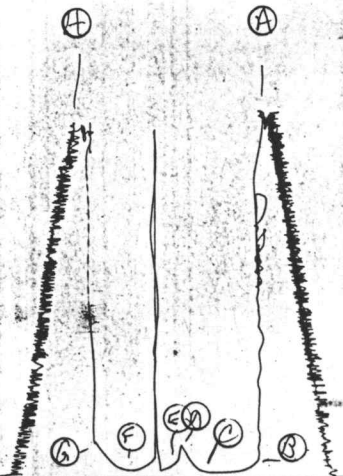
WESTERN TESTING CO. INC.

13463

KT 13870

Energy Exp.
DST 2

I

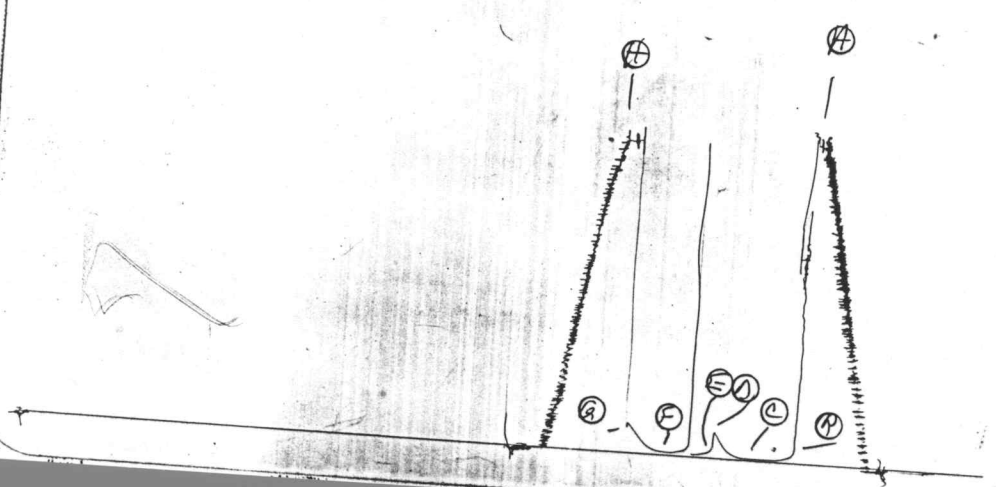


13629

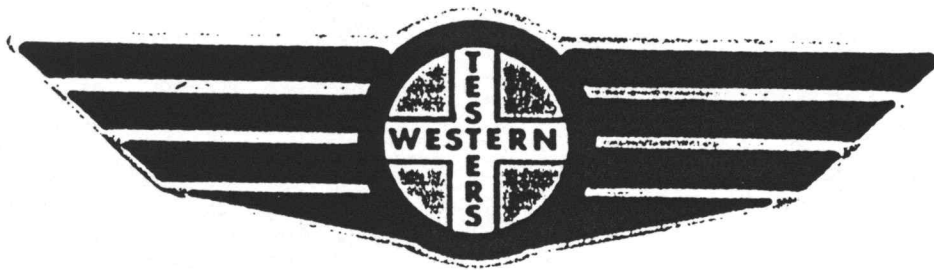
KA 13850

Energy Exp.
DSTL

0



FORMATION TEST REPORT



Home Office:

Wichita, Kansas 67201

P.O. Box 1599

Phone (316) 262-5861

COMPANY ENERGY EXPLORATION INC. LEASE & WELL NO. MJ WERTH #3 SEC. 2 TWP. 10S RGE. 26W TEST NO. 2 DATE 4-25-88

WESTERN TESTING CO. INC.
SUBSURFACE PRESSURE SURVEY

DATE : 4-25-88 TICKET : 13820
CUSTOMER : ENERGY EXPLORATION INC. LEASE : M J WERTH
WELL : #3 TEST: 2 GEOLOGIST : K. HOWARD
ELEVATION : 2558 KB FORMATION : LANSING
SECTION : 2 TOWNSHIP : 10S
RANGE : 26W COUNTY : SHERIDAN STATE : KANSAS
GAUGE SN# : 13629 RANGE : 4425 CLOCK : 12

INTERVAL FROM : 3830 TO : 3847 TOTAL DEPTH : 3847
DEPTH OF SELECTIVE ZONE :
PACKER DEPTH : 3825 SIZE : 6.75
PACKER DEPTH : 3830 SIZE : 6.75
PACKER DEPTH : SIZE :
PACKER DEPTH : SIZE :

DRILLING CON. : H-30 #11
MUD TYPE : CHEMICAL VISCOSITY : 63
WEIGHT : 9.1 WATER LOSS (CC) : 13.6
CHLORIDES (PPM) : 8000
JARS-MAKE : - SERIAL NUMBER :
DID WELL FLOW ? : NO REVERSED OUT ? : NO

DRILL COLLAR LENGTH : 0 FT I.D. inch : 0.00
WEIGHT PIPE LENGTH : 0 FT I.D. inch : 0.00
DRILL PIPE LENGTH : 3810 FT I.D. inch : 3.80
TEST TOOL LENGTH : 20 FT TOOL SIZE : 5.50
ANCHOR LENGTH : 17 FT ANCHOR SIZE : 5.50
SURFACE CHOKE SIZE : .75 IN BOTTOM CHOKE SIZE : .75
MAIN HOLE SIZE : 7.875 IN TOOL JOINT SIZE : 4.5 XH

BLOW COMMENT #1 : INITIAL FLOW-WEAK BLOW-DEAD IN 20 MINUTES.
BLOW COMMENT #2 : FINAL FLOW-NO BLOW.
BLOW COMMENT #3 :
BLOW COMMENT #4 :

RECOVERED : 15 FT OF: DRILLING MUD / FEW SPOTS OF OIL

Total Barrels Fluid = 0.21
Total Fluid Prod Rate = 5.05 BFPD
Indicated Wtr Rate = 0.50 BWPD

REMARK 1 : FLUSHED TOOL FINAL FLOW.

REMARK 2 :

REMARK 3 :

REMARK 4 :

SET PACKER(S) : 5:15 AM

TIME STARTED OFF BOTTOM : 7:15 AM

WELL TEMPERATURE : 113

INITIAL HYDROSTATIC PRESSURE (A) 1862

INITIAL FLOW PERIOD MIN: 30 (B) 27 PSI TO (C) : 27

INITIAL CLOSED IN PERIOD MIN: 30 (D) 170

FINAL FLOW PERIOD MIN: 30 (E) 47 PSI TO (F) : 36

FINAL CLOSED IN PERIOD MIN: 33 (G) 195

FINAL HYDROSTATIC PRESSURE (H) 1832

WESTERN TESTING CO. INC.
WICHITA-KANSAS

Pressure Transient Report

COMPANY : ENERGY EXPLORATION INC.
RIG : SHERIDAN-KANSAS
FIELD : M J WERTH
WELL : #3
DATE : 4-25-88
GAUGE NO : 13629

OPERATIONAL COMMENTS

FLUSHED TOOL FINAL FLOW.

COMPANY : ENERGY EXPLORATION INC.
WELL : #3
GAUGE # : 13629
DATE : 25/ 4/88

FIELD : M J WERTH
JOB # : 13820
DEPTH : 3847
TEST : FLUSHED TOOL FINAL FLOW.

DATA No.	REAL TIME HR:MN:SS	ELAPSE TIME DELTA HOURS	PRESSURE PSIG	TEMP DEG F	DELTA P Pi-P(i-1)
1	5:15:0	0.000	27.000	113.00	0.000
2	5:19:59	0.083	27.000	113.00	0.000
3	5:25:0	0.167	27.000	113.00	0.000
4	5:30:0	0.250	27.000	113.00	0.000
5	5:34:59	0.333	27.000	113.00	0.000
6	5:40:0	0.417	27.000	113.00	0.000
7	5:45:0	0.500	27.000	113.00	0.000
8	5:48:0	0.550	27.000	113.00	0.000
9	5:51:0	0.600	27.000	113.00	0.000
10	5:54:0	0.650	28.000	113.00	1.000
11	5:57:0	0.700	32.000	113.00	4.000
12	6:0:0	0.750	39.000	113.00	7.000
13	6:3:0	0.800	53.000	113.00	14.000
14	6:6:0	0.850	75.000	113.00	22.000
15	6:9:0	0.900	107.000	113.00	32.000
16	6:12:0	0.950	143.000	113.00	36.000
17	6:15:0	1.000	170.000	113.00	27.000
18	6:16:0	1.017	47.000	113.00	-123.000
19	6:19:59	1.083	39.000	113.00	-8.000
20	6:25:0	1.167	32.000	113.00	-7.000
21	6:30:0	1.250	30.000	113.00	-2.000
22	6:34:59	1.333	51.000	113.00	21.000
23	6:40:0	1.417	40.000	113.00	-11.000
24	6:45:0	1.500	36.000	113.00	-4.000
25	6:48:0	1.550	37.000	113.00	1.000
26	6:51:0	1.600	38.000	113.00	1.000
27	6:54:0	1.650	39.000	113.00	1.000
28	6:57:0	1.700	44.000	113.00	5.000
29	7:0:0	1.750	56.000	113.00	12.000
30	7:3:0	1.800	67.000	113.00	11.000
31	7:6:0	1.850	94.000	113.00	27.000
32	7:9:0	1.900	124.000	113.00	30.000
33	7:12:0	1.950	154.000	113.00	30.000
34	7:15:0	2.000	180.000	113.00	26.000
35	7:18:0	2.050	195.000	113.00	15.000

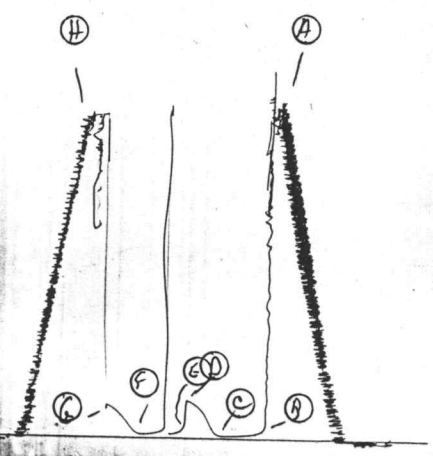
WESTERN TESTING CO. INC.

13629

KF 1381

Energy Exp
PST 3

I

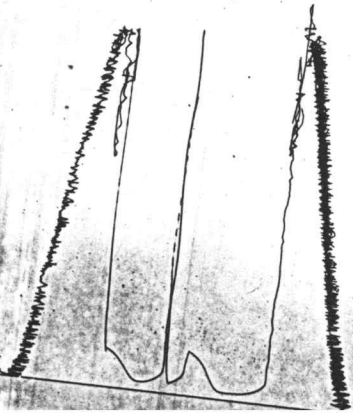


15783

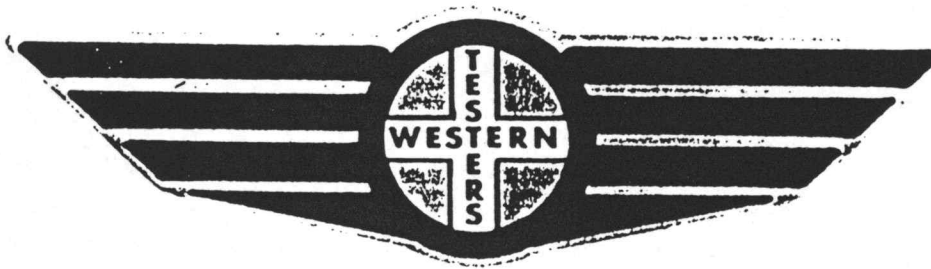
KF 13821

ENERGY EXP.
DST 3

0



FORMATION TEST REPORT



Home Office:

Wichita, Kansas 67201

P.O. Box 1599

Phone (316) 262-5861

COMPANY ENERGY EXPLORATION, INC. LEASE & WELL NO. M J WERTH #3 SEC. 2 TWP. 10SRGE. 26WTEST NO. 3 DATE 4/25/86

WESTERN TESTING CO. INC.
SUBSURFACE PRESSURE SURVEY

DATE : 4-25-88 TICKET : 13821
CUSTOMER : ENERGY EXPLORATION INC. LEASE : M J WERTH
WELL : #3 TEST: 3 GEOLOGIST : K. HOWARD
ELEVATION : 2558 KB FORMATION : LANSING
SECTION : 2 TOWNSHIP : 10S
RANGE : 26W COUNTY : SHERIDAN STATE : KANSAS
GAUGE SN# : 13629 RANGE : 4425 CLOCK : 12

INTERVAL FROM : 3848 TO : 3864 TOTAL DEPTH : 3864
DEPTH OF SELECTIVE ZONE :
PACKER DEPTH : 3843 SIZE : 6.75
PACKER DEPTH : 3848 SIZE : 6.75
PACKER DEPTH : SIZE :
PACKER DEPTH : SIZE :

DRILLING CON. : H-30 RIG 11
MUD TYPE : CHEMICAL VISCOSITY : 41
WEIGHT : 9.2 WATER LOSS (CC) : 10.4
CHLORIDES (PPM) : 8000
JARS-MAKE : - SERIAL NUMBER :
DID WELL FLOW ? : NO REVERSED OUT ? : NO

DRILL COLLAR LENGTH : 0 FT I.D. inch : 0.00
WEIGHT PIPE LENGTH : 0 FT I.D. inch : 0.00
DRILL PIPE LENGTH : 3828 FT I.D. inch : 3.80
TEST TOOL LENGTH : 20 FT TOOL SIZE : 5.50
ANCHOR LENGTH : 16 FT ANCHOR SIZE : 5.50
SURFACE CHOKE SIZE : .75 IN BOTTOM CHOKE SIZE : .75
MAIN HOLE SIZE : 7.875 IN TOOL JOINT SIZE : 4.5 XH

BLOW COMMENT #1 : INITIAL FLOW-WEAK BLOW DEAD IN 10 MINUTES.
BLOW COMMENT #2 : FINAL FLOW-NO BLOW.
BLOW COMMENT #3 :
BLOW COMMENT #4 :

RECOVERED : 20 FT OF: DRILLING MUD / FEW OIL SPECKS

Total Barrels Fluid = 0.28
Total Fluid Prod Rate = 6.73 BFPD
Indicated Wtr Rate = 1.01 BHPD

REMARK 1 : FLUSHED TOOL FINAL FLOW.
REMARK 2 :
REMARK 3 :
REMARK 4 :

SET PACKER(S) :	4:55 PM	TIME STARTED OFF BOTTOM :	6:55 PM
WELL TEMPERATURE :	114		
INITIAL HYDROSTATIC PRESSURE		(A)	1938
INITIAL FLOW PERIOD MIN:	30	(B)	45 PSI TO (C) : 31
INITIAL CLOSED IN PERIOD MIN:	30	(D)	231
FINAL FLOW PERIOD MIN:	30	(E)	50 PSI TO (F) : 37
FINAL CLOSED IN PERIOD MIN:	30	(G)	202
FINAL HYDROSTATIC PRESSURE		(H)	1893

WESTERN TESTING CO. INC.
WICHITA-KANSAS

Pressure Transient Report

COMPANY : ENERGY EXPLORATION INC.
RIG : SHERIDAN-KANSAS
FIELD : M J WERTH
WELL : #3
DATE : 4-25-88
GAUGE NO : 13629

OPERATIONAL COMMENTS

FLUSHED TOOL FINAL FLOW.

COMPANY : ENERGY EXPLORATION INC.
WELL : #3
GAUGE # : 13629
DATE : 25/ 4/88

FIELD : M J WERTH
JOB # : 13821
DEPTH : 3864
TEST : FLUSHED TOOL FINAL FLOW.

DATA No.	REAL TIME HR:MN:SS	ELAPSE TIME DELTA HOURS	PRESSURE PSIG	TEMP DEG F	DELTA P Pi-P(i-1)
1	4:55: 0	0.000	45.000	114.00	0.000
2	4:59:59	0.083	45.000	114.00	0.000
3	5: 5: 0	0.167	41.000	114.00	-4.000
4	5:10: 0	0.250	37.000	114.00	-4.000
5	5:14:59	0.333	35.000	114.00	-2.000
6	5:20: 0	0.417	32.000	114.00	-3.000
7	5:25: 0	0.500	31.000	114.00	-1.000
8	5:28: 0	0.550	31.000	114.00	0.000
9	5:31: 0	0.600	37.000	114.00	6.000
10	5:34: 0	0.650	58.000	114.00	21.000
11	5:37: 0	0.700	102.000	114.00	44.000
12	5:40: 0	0.750	145.000	114.00	43.000
13	5:43: 0	0.800	176.000	114.00	31.000
14	5:46: 0	0.850	200.000	114.00	24.000
15	5:49: 0	0.900	213.000	114.00	13.000
16	5:52: 0	0.950	225.000	114.00	12.000
17	5:55: 0	1.000	231.000	114.00	6.000
18	5:56: 0	1.017	50.000	114.00	-181.000
19	5:59:59	1.083	50.000	114.00	0.000
20	6: 5: 0	1.167	39.000	114.00	-11.000
21	6:10: 0	1.250	65.000	114.00	26.000
22	6:14:59	1.333	48.000	114.00	-17.000
23	6:20: 0	1.417	39.000	114.00	-9.000
24	6:25: 0	1.500	37.000	114.00	-2.000
25	6:28: 0	1.550	38.000	114.00	1.000
26	6:31: 0	1.600	45.000	114.00	7.000
27	6:34: 0	1.650	67.000	114.00	22.000
28	6:37: 0	1.700	96.000	114.00	29.000
29	6:40: 0	1.750	126.000	114.00	30.000
30	6:43: 0	1.800	151.000	114.00	25.000
31	6:46: 0	1.850	172.000	114.00	21.000
32	6:49: 0	1.900	190.000	114.00	18.000
33	6:52: 0	1.950	198.000	114.00	8.000
34	6:55: 0	2.000	202.000	114.00	4.000

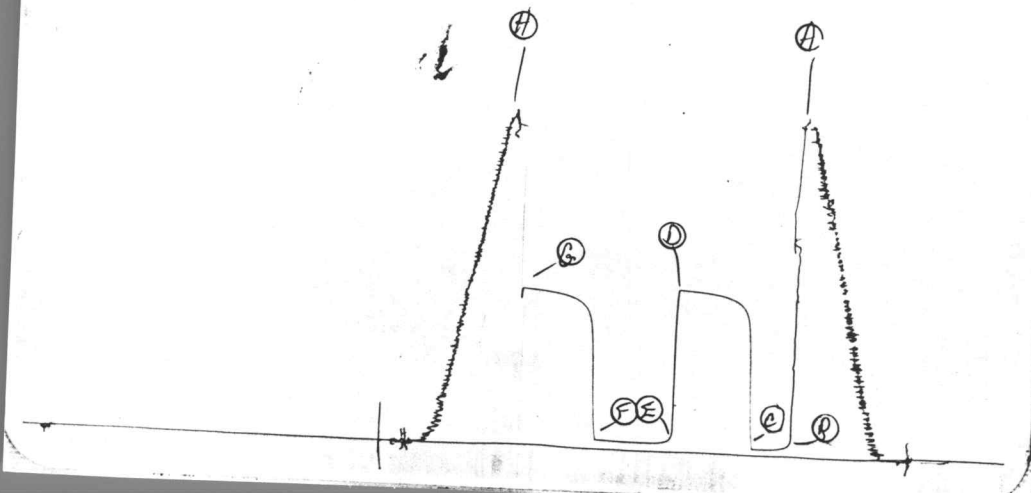
WESTERN TESTING CO. INC.

13629

R4 13822.

Energy Exp.
DFTd

I

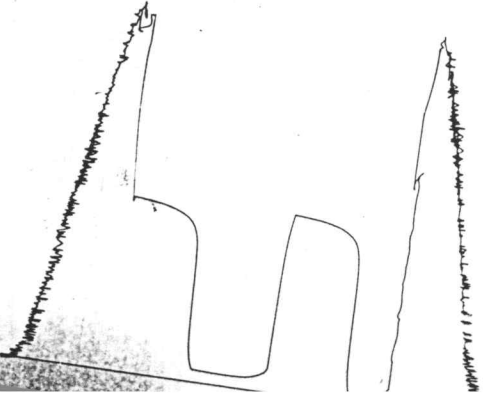


13403

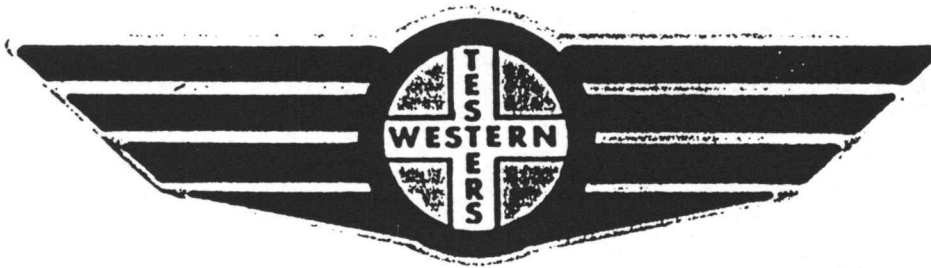
~~KA~~ B822

Energy Exp
DST 4

0



FORMATION TEST REPORT



Home Office:

Wichita, Kansas 67201

P.O. Box 1599

Phone (316) 262-5861

WESTERN TESTING CO. INC.
SUBSURFACE PRESSURE SURVEY

DATE : 4-26-88 TICKET : 13822
CUSTOMER : ENERGY EXPLORATION INC. LEASE : M J WERTH
WELL : #3 TEST: 4 GEOLOGIST : K. HOWARD
ELEVATION : 2558 KB FORMATION : LANSING
SECTION : 2 TOWNSHIP : 10S
RANGE : 26W COUNTY : SHERIDAN STATE : KANSAS
GAUGE SN# : 13629 RANGE : 4425 CLOCK : 12

INTERVAL FROM : 3871 TO : 3899 TOTAL DEPTH : 3899
DEPTH OF SELECTIVE ZONE :
PACKER DEPTH : 3866 SIZE : 6.75
PACKER DEPTH : 3871 SIZE : 6.75
PACKER DEPTH : SIZE :
PACKER DEPTH : SIZE :

DRILLING CON. : H-30 RIG 11
MUD TYPE : CHEMICAL VISCOSITY : 42
WEIGHT : 9.3 WATER LOSS (CC) : 9.6
CHLORIDES (PPM) : 7000
JARS-MAKE : - SERIAL NUMBER :
DID WELL FLOW ? : NO REVERSED OUT ? : NO

DRILL COLLAR LENGTH : 0 FT I.D. inch : 0.00
WEIGHT PIPE LENGTH : 0 FT I.D. inch : 0.00
DRILL PIPE LENGTH : 3851 FT I.D. inch : 3.80
TEST TOOL LENGTH : 20 FT TOOL SIZE : 5.50
ANCHOR LENGTH : 28 FT ANCHOR SIZE : 5.50
SURFACE CHOKE SIZE : .75 IN BOTTOM CHOKE SIZE : .75
MAIN HOLE SIZE : 7.875 IN TOOL JOINT SIZE : 4.5 XH

BLOW COMMENT #1 : WEAK SURFACE BLOW THROUGHOUT THE TEST.
BLOW COMMENT #2 :
BLOW COMMENT #3 :
BLOW COMMENT #4 :

RECOVERED : 90 FT OF: SLIGHTLY WATER CUT MUD
/ WITH SHOW OF OIL ON TOP.

CHLORIDES: 17000 PPM

Total Barrels Fluid = 1.26
Total Fluid Prod Rate = 20.20 BFPD
Indicated Wtr Rate = 2.02 BWPD

REMARK 1 :
REMARK 2 :
REMARK 3 :
REMARK 4 :

SET PACKER(S) : 8:45 AM

TIME STARTED OFF BOTTOM : 12:15 PM

WELL TEMPERATURE : 114

INITIAL HYDROSTATIC PRESSURE

(A) 1955

INITIAL FLOW PERIOD MIN: 30

(B) 42 PSI TO (C) : 42

INITIAL CLOSED IN PERIOD MIN: 60

(D) 953

FINAL FLOW PERIOD MIN: 60

(E) 55 PSI TO (F) : 57

FINAL CLOSED IN PERIOD MIN: 60

(G) 929

FINAL HYDROSTATIC PRESSURE

(H) 1922

WESTERN TESTING CO. INC.
WICHITA-KANSAS

Pressure Transient Report

COMPANY : ENERGY EXPLORATION INC.
RIG : SHERIDAN-KANSAS
FIELD : M J WERTH
WELL : #3
DATE : 4-26-88
GAUGE NO : 13629

OPERATIONAL COMMENTS

COMPANY : ENERGY EXPLORATION INC.
WELL : #3
GAUGE # : 13629
DATE : 26/ 4/88

FIELD : M J WERTH
JOB # : 13822
DEPTH : 3899
TEST :

DATA No.	REAL TIME HR:MN:SS	ELAPSE TIME DELTA HOURS	PRESSURE PSIG	TEMP DEG F	DELTA P Pi-P(i-1)
1	8:45: 0	0.000	42.000	114.00	0.000
2	8:49:59	0.083	42.000	114.00	0.000
3	8:55: 0	0.167	42.000	114.00	0.000
4	9: 0: 0	0.250	42.000	114.00	0.000
5	9: 4:59	0.333	42.000	114.00	0.000
6	9:10: 0	0.417	42.000	114.00	0.000
7	9:15: 0	0.500	42.000	114.00	0.000
8	9:18: 0	0.550	318.000	114.00	276.000
9	9:21: 0	0.600	676.000	114.00	358.000
10	9:24: 0	0.650	843.000	114.00	167.000
11	9:27: 0	0.700	877.000	114.00	34.000
12	9:30: 0	0.750	893.000	114.00	16.000
13	9:33: 0	0.800	904.000	114.00	11.000
14	9:36: 0	0.850	913.000	114.00	9.000
15	9:39: 0	0.900	921.000	114.00	8.000
16	9:42: 0	0.950	928.000	114.00	7.000
17	9:45: 0	1.000	932.000	114.00	4.000
18	9:48: 0	1.050	936.000	114.00	4.000
19	9:51: 0	1.100	940.000	114.00	4.000
20	9:54: 0	1.150	943.000	114.00	3.000
21	9:57: 0	1.200	945.000	114.00	2.000
22	10: 0: 0	1.250	947.000	114.00	2.000
23	10: 3: 0	1.300	949.000	114.00	2.000
24	10: 6: 0	1.350	950.000	114.00	1.000
25	10: 9: 0	1.400	951.000	114.00	1.000
26	10:12: 0	1.450	952.000	114.00	1.000
27	10:15: 0	1.500	953.000	114.00	1.000
28	10:16: 0	1.517	55.000	114.00	-898.000
29	10:19:59	1.583	55.000	114.00	0.000
30	10:25: 0	1.667	55.000	114.00	0.000
31	10:30: 0	1.750	55.000	114.00	0.000
32	10:34:59	1.833	55.000	114.00	0.000
33	10:40: 0	1.917	55.000	114.00	0.000
34	10:45: 0	2.000	55.000	114.00	0.000
35	10:49:59	2.083	56.000	114.00	1.000
36	10:55: 0	2.167	56.000	114.00	0.000
37	11: 0: 0	2.250	56.000	114.00	0.000
38	11: 4:59	2.333	57.000	114.00	1.000
39	11:10: 0	2.417	57.000	114.00	0.000
40	11:15: 0	2.500	57.000	114.00	0.000
41	11:18: 0	2.550	405.000	114.00	348.000
42	11:21: 0	2.600	736.000	114.00	331.000
43	11:24: 0	2.650	813.000	114.00	77.000
44	11:27: 0	2.700	843.000	114.00	30.000
45	11:30: 0	2.750	861.000	114.00	18.000
46	11:33: 0	2.800	872.000	114.00	11.000
47	11:36: 0	2.850	883.000	114.00	11.000
48	11:39: 0	2.900	891.000	114.00	8.000
49	11:42: 0	2.950	898.000	114.00	7.000
50	11:45: 0	3.000	902.000	114.00	4.000
51	11:48: 0	3.050	907.000	114.00	5.000
52	11:51: 0	3.100	910.000	114.00	3.000

COMPANY : ENERGY EXPLORATION INC.
WELL : #3
GAUGE # : 13629
DATE : 26/ 4/88

FIELD : M J WERTH
JOB # : 13822
DEPTH : 3899
TEST :

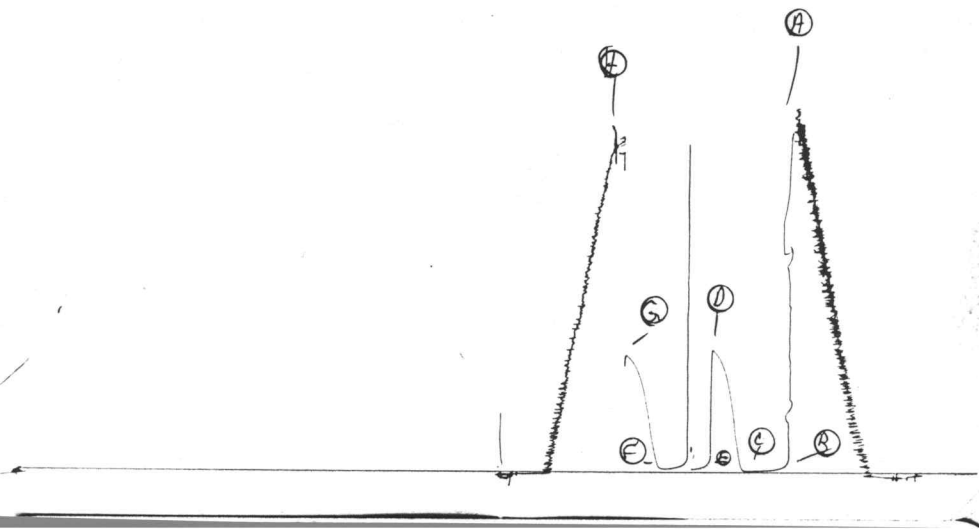
DATA No.	REAL TIME HR:MN:SS	ELAPSE TIME DELTA HOURS	PRESSURE PSIG	TEMP DEG F	DELTA P Pi-P(i-1)
53	11:54: 0	3.150	915.000	114.00	5.000
54	11:57: 0	3.200	917.000	114.00	2.000
55	12: 0: 0	3.250	919.000	114.00	2.000
56	12: 3: 0	3.300	921.000	114.00	2.000
57	12: 6: 0	3.350	923.000	114.00	2.000
58	12: 9: 0	3.400	925.000	114.00	2.000
59	12:12: 0	3.450	927.000	114.00	2.000
60	12:15: 0	3.500	929.000	114.00	2.000

WESTERN TESTING CO. INC.

13629

AK4 13822
I

Energy Ex
PST 5

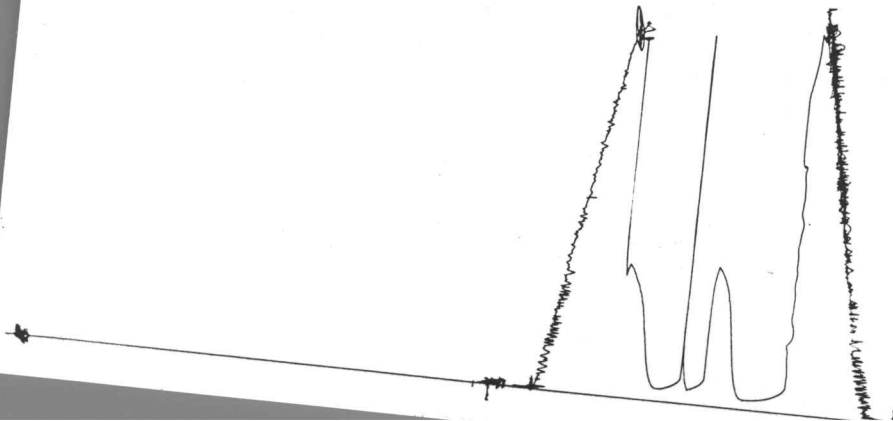


15483

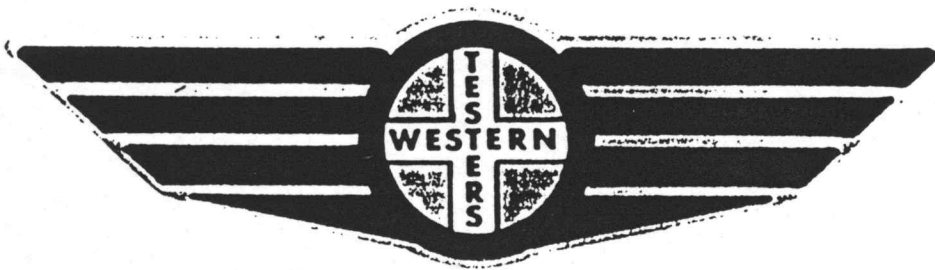
HT 13825

Energy Exp
PET

0



FORMATION TEST REPORT



Home Office:

Wichita, Kansas 67201

P.O. Box 1599

Phone (316) 262-5861

COMPANY ENERGY EXPLORATION, INC. LEASE & WELL NO. M J WERTH #3 SEC. 2 TWP. 10S RGE. 26W TEST NO. 5 DATE 4/27/88

WESTERN TESTING CO. INC.
SUBSURFACE PRESSURE SURVEY

DATE : 4-27-88 TICKET : 13823
CUSTOMER : ENERGY EXPLORATION INC. LEASE : M J WERTH
WELL : #3 TEST: 5 GEOLOGIST : K HOWARD
ELEVATION : 2558 KB FORMATION : LANSING
SECTION : 2 TOWNSHIP : 10S
RANGE : 26W COUNTY : SHERIDAN STATE : KANSAS
GAUGE SN# : 13629 RANGE : 4425 CLOCK : 12

INTERVAL FROM : 3929 TO : 3960 TOTAL DEPTH : 3960
DEPTH OF SELECTIVE ZONE :
PACKER DEPTH : 3924 SIZE : 6.75
PACKER DEPTH : 3929 SIZE : 6.75
PACKER DEPTH : SIZE :
PACKER DEPTH : SIZE :

DRILLING CON. : H-30 RIG 11
MUD TYPE : CHEMICAL VISCOSITY : 48
WEIGHT : 9.3 WATER LOSS (CC) : 8.8
CHLORIDES (PPM) : 7000
JARS-MAKE : - SERIAL NUMBER :
DID WELL FLOW ? : NO REVERSED OUT ? : NO

DRILL COLLAR LENGTH : 0 FT I.D. inch : 0.00
WEIGHT PIPE LENGTH : 0 FT I.D. inch : 0.00
DRILL PIPE LENGTH : 3909 FT I.D. inch : 3.80
TEST TOOL LENGTH : 20 FT TOOL SIZE : 5.50
ANCHOR LENGTH : 31 FT ANCHOR SIZE : 5.50
SURFACE CHOKE SIZE : .75 IN BOTTOM CHOKE SIZE : .75
MAIN HOLE SIZE : 7.875 IN TOOL JOINT SIZE : 4.5 XH

BLOW COMMENT #1 : INITIAL FLOW-WEAK BLOW-DEAD IN 5 MINUTES.
BLOW COMMENT #2 : FINAL FLOW-NO BLOW.
BLOW COMMENT #3 :
BLOW COMMENT #4 :

RECOVERED : 15 FT OF: DRILLING MUD

Total Barrels Fluid = 0.21
Total Fluid Prod Rate = 4.66 BFPD
Indicated Wtr Rate = 0.47 BHPD

REMARK 1 : FLUSHED TOOL FINAL FLOW.

REMARK 2 :

REMARK 3 :

REMARK 4 :

SET PACKER(S) : 1:30 AM

TIME STARTED OFF BOTTOM : 3:30 AM

WELL TEMPERATURE : 115

INITIAL HYDROSTATIC PRESSURE

(A) 2007

INITIAL FLOW PERIOD MIN: 30

(B) 41 PSI TO (C) : 32

INITIAL CLOSED IN PERIOD MIN: 30

(D) 739

FINAL FLOW PERIOD MIN: 35

(E) 58 PSI TO (F) : 41

FINAL CLOSED IN PERIOD MIN: 30

(G) 708

FINAL HYDROSTATIC PRESSURE

(H) 1977

WESTERN TESTING CO. INC.
WICHITA-KANSAS

Pressure Transient Report

COMPANY : ENERGY EXPLORATION INC.
RIG : SHERIDAN-KANSAS
FIELD : M J WERTH
WELL : #3
DATE : 4-27-88
GAUGE NO : 13629

OPERATIONAL COMMENTS

FLUSHED TOOL FINAL FLOW.

COMPANY : ENERGY EXPLORATION INC.
 WELL : #3
 GAUGE # : 13629
 DATE : 27/ 4/88

FIELD : M J WERTH
 JOB # : 13823
 DEPTH : 3960
 TEST : FLUSHED TOOL FINAL FLOW.

DATA No.	REAL TIME HR:MN:SS	ELAPSE TIME DELTA HOURS	PRESSURE PSIG	TEMP DEG F	DELTA P $P_i - P_{(i-1)}$
1	1:30: 0	0.000	41.000	115.00	0.000
2	1:34:59	0.083	41.000	115.00	0.000
3	1:40: 0	0.167	40.000	115.00	-1.000
4	1:45: 0	0.250	37.000	115.00	-3.000
5	1:49:59	0.333	35.000	115.00	-2.000
6	1:55: 0	0.417	33.000	115.00	-2.000
7	2: 0: 0	0.500	32.000	115.00	-1.000
8	2: 3: 0	0.550	35.000	115.00	3.000
9	2: 6: 0	0.600	73.000	115.00	38.000
10	2: 9: 0	0.650	207.000	115.00	134.000
11	2:12: 0	0.700	368.000	115.00	161.000
12	2:15: 0	0.750	506.000	115.00	138.000
13	2:18: 0	0.800	601.000	115.00	95.000
14	2:21: 0	0.850	664.000	115.00	63.000
15	2:24: 0	0.900	703.000	115.00	39.000
16	2:27: 0	0.950	730.000	115.00	27.000
17	2:30: 0	1.000	739.000	115.00	9.000
18	2:31: 0	1.017	58.000	115.00	-681.000
19	2:34:59	1.083	58.000	115.00	0.000
20	2:40: 0	1.167	42.000	115.00	-16.000
21	2:45: 0	1.250	38.000	115.00	-4.000
22	2:49:59	1.333	67.000	115.00	29.000
23	2:55: 0	1.417	48.000	115.00	-19.000
24	3: 0: 0	1.500	41.000	115.00	-7.000
25	3: 4:59	1.583	41.000	115.00	0.000
26	3: 7:59	1.633	47.000	115.00	6.000
27	3:10:59	1.683	112.000	115.00	65.000
28	3:13:59	1.733	221.000	115.00	109.000
29	3:16:59	1.783	365.000	115.00	144.000
30	3:19:59	1.833	488.000	115.00	123.000
31	3:22:59	1.883	569.000	115.00	81.000
32	3:25:59	1.933	626.000	115.00	57.000
33	3:28:59	1.983	665.000	115.00	39.000
34	3:31:59	2.033	692.000	115.00	27.000
35	3:34:59	2.083	708.000	115.00	16.000

WESTERN TESTING CO. INC.