

# GARVEY DRILLING COMPANY

TESTING DIVISION

Nº 2752

Company Pet Inc. Lease & Well No. Metheny #1

Elevation \_\_\_\_\_ Ticket Number \_\_\_\_\_

Date 11-15-65 Sec. \_\_\_\_\_ Twp. \_\_\_\_\_ Range \_\_\_\_\_ County Rooks State Kansas

Test Approved by Joy Dirks Garvey Representative \_\_\_\_\_

Formation Test No. 1 O.K.  Misrun  Interval Tested From 3558 to 3575 Total Depth 3575

Size Main Hole 7 7/8 Rat Hole  Conv.  B.T.  Damaged  Yes  No  Conv.  B.T.  Damaged  Yes  No

Packer Depth 3552 Ft. Size 6 3/4 Packer Depth 3558 Ft. Size 6 3/4

Straddle  Yes  No  Conv.  B.T.  Damaged  Yes  No

Tool Size 5" Packer Depth \_\_\_\_\_ Ft. Size \_\_\_\_\_  
Tool Jt. Size 5 1/2" Anchor Length 17 Ft. Size 4 1/2 FH

RECORDERS Depth 3570 Ft. Clock No. 51 Depth 3572 Ft. Clock No. 52

Top Make Western Cap. 4000 No. 51 Inside  Outside  Bottom Make Western Cap. 4000 No. 52 Inside  Outside

Below Straddle: Depth \_\_\_\_\_ Clock No. \_\_\_\_\_ Inside  Outside  Depth \_\_\_\_\_ Ft. Clock No. \_\_\_\_\_ Inside  Outside

Top Make \_\_\_\_\_ Cap. \_\_\_\_\_ No. \_\_\_\_\_ Inside  Outside  Bottom Make \_\_\_\_\_ Cap. \_\_\_\_\_ No. \_\_\_\_\_ Inside  Outside

Time Set Packer 12:46 P M

Tool Open I.F.P. From 12:48 M. to 1:18 M. - Hr. 30 Min. From (B) 90 P.S.I. To (C) 90 P.S.I.

Tool Closed I.C.I.P. From 1:18 M. to 1:48 M. - Hr. 30 Min. (D) 1150 P.S.I.

Tool Open F.F.P. From 1:48 M. to 2:18 M. - Hr. 30 Min From (E) 90 P.S.I. To (F) 90 P.S.I.

Tool Closed F.C.I.P. From 2:18 M. to 2:48 M. - Hr. 30 Min. (G) 1050 P.S.I.

Initial Hydrostatic Pressure (A) 2150 P.S.I. Final Hydrostatic Pressure (H) 2150 P.S.I.

SURFACE Size Choke 2 1/2 In. Max. Press. P.S.I. \_\_\_\_\_ Time \_\_\_\_\_ Description of Flow \_\_\_\_\_

INFORMATION \_\_\_\_\_ M. \_\_\_\_\_

\_\_\_\_\_ M. \_\_\_\_\_

\_\_\_\_\_ M. \_\_\_\_\_

BLOW Very weak 30 min died Bottom Choke Size 2 in.

Did Well Flow  Yes  No. Recovery Total Ft. 15' mud

Reversed Out  Yes  No Mud Type stuck Viscosity 42 Weight 10.5 Maximum Temp. 108 °F

EXTRA EQUIPMENT: Dual Packers yes Safety Joint NO Jars: Size \_\_\_\_\_ Make \_\_\_\_\_ Ser. No. \_\_\_\_\_

Type Circ. Sub. Halliburton Did Tool Plug? NO Where? \_\_\_\_\_ Did Packer Hold? yes

Length Drill Pipe 3535 ft. I. D Drill Pipe 3 in. Length Weight Pipe \_\_\_\_\_ ft. I. D. Weight Pipe \_\_\_\_\_ in. Length Drill Collars \_\_\_\_\_ ft.

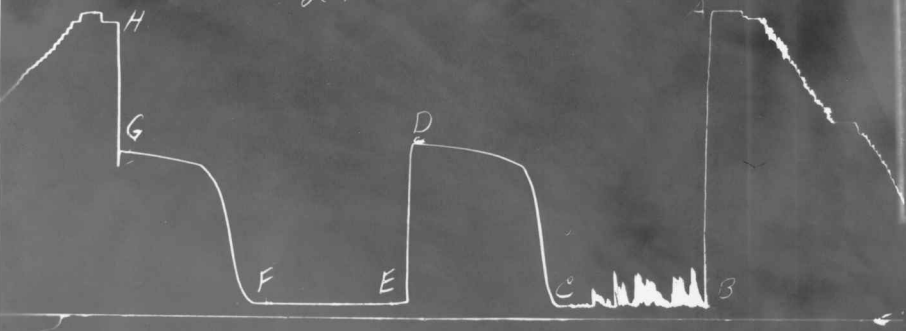
I. D. Drill Collars \_\_\_\_\_ in. Length D. S. T. Tool 40 ft.

Remarks plugging action first 20 min. of test

29-10s-20W  
SW-NW-N/E



2752



DRILLING CO.

# GARVEY DRILLING COMPANY

TESTING DIVISION

No. 2753

Lease & Well No. Metheny #1

Elevation \_\_\_\_\_ Ticket Number \_\_\_\_\_

Date 11-16-65 Sec. \_\_\_\_\_ Twp. \_\_\_\_\_ Range \_\_\_\_\_ County Rooks State Kansas

Test Approved by Jay Dinks Garvey Representative Doyle Folkerts

Formation Test No. 2 O.K.  Misrun  Interval Tested From 3590 to 3700 Total Depth 3700

Size Main Hole 7 7/8 Rat Hole \_\_\_\_\_ Conv.  B.T.  Damaged  Yes  No  Conv.  B.T.  Damaged  Yes  No

Packer Depth 3594 Ft. Size 6 3/4 Packer Depth 3590 Ft. Size 6 3/4

Straddle  Yes  No  Conv.  B.T.  Damaged  Yes  No

Packer Depth \_\_\_\_\_ Ft. Size \_\_\_\_\_  
Tool Size 5" Tool Jt. Size 5 1/2" Anchor Length 110 Ft. Size 4 1/2 FH

RECORDERS Depth 3695 Ft. Clock No. 51 Depth 3697 Ft. Clock No. 52

Top Make Western Cap. 4000 No. 51 Inside  Outside  Bottom Make Western Cap. 4000 No. 52 Inside  Outside

Below Straddle: Depth \_\_\_\_\_ Clock No. \_\_\_\_\_ Inside  Outside  Depth \_\_\_\_\_ Ft. Clock No. \_\_\_\_\_ Inside  Outside

Top Make \_\_\_\_\_ Cap. \_\_\_\_\_ No. \_\_\_\_\_ Inside  Outside  Bottom Make \_\_\_\_\_ Cap. \_\_\_\_\_ No. \_\_\_\_\_ Inside  Outside

Time Set Packer 10:43 A M

Tool Open I.F.P. From 10:46 M. to 11:16 M. Hr. 30 Min. From (B) 160 P.S.I. To (C) 160 P.S.I.

Tool Closed I.C.I.P. From 11:16 M. to 11:46 M. Hr. 30 Min. (D) 590 P.S.I.

Tool Open F.F.P. From 11:46 M. to 12:16 M. Hr. 30 Min. From (E) 160 P.S.I. To (F) 160 P.S.I.

Tool Closed F.C.I.P. From 12:16 M. to 12:46 M. Hr. 30 Min. (G) 370 P.S.I.

Initial Hydrostatic Pressure (A) 2200 P.S.I. Final Hydrostatic Pressure (H) 2190 P.S.I.

SURFACE Size Choke 4 In. Max. Press. P.S.I. \_\_\_\_\_ Time \_\_\_\_\_ Description of Flow \_\_\_\_\_

INFORMATION \_\_\_\_\_ M. \_\_\_\_\_

\_\_\_\_\_ M. \_\_\_\_\_

\_\_\_\_\_ M. \_\_\_\_\_

BLOW Weak 30 min. Died Bottom Choke Size 4 in.

Did Well Flow  Yes  No. Recovery Total Ft. 30' Mud

Reversed Out  Yes  No Mud Type Starch Viscosity 44 Weight 10.4 Maximum Temp. 92 °F

EXTRA EQUIPMENT: Dual Packers Yes Safety Joint No Jars: Size \_\_\_\_\_ Make \_\_\_\_\_ Ser. No. \_\_\_\_\_

Type Circ. Sub. 11 1/2 160 100 100 Did Tool Plug? No Where? \_\_\_\_\_ Did Packer Hold? Yes

Length Drill Pipe 3557 ft. I. D Drill Pipe 3 in. Length Weight Pipe \_\_\_\_\_ ft. I. D. Weight Pipe \_\_\_\_\_ in. Length Drill Collars \_\_\_\_\_ ft.

I. D. Drill Collars \_\_\_\_\_ in. Length D. S. T. Tool 143 ft.

Remarks \_\_\_\_\_

29-105-20W  
SW-NW-NE

# GARVEY DRILLING CO.

## Pressure Data

Date 11-16-65 Test Ticket No. 2753  
 Recorder No. 51 Capacity 4000 Location 3695 Ft.  
 Clock No. 51 Elevation \_\_\_\_\_ Well Temperature 92 °F

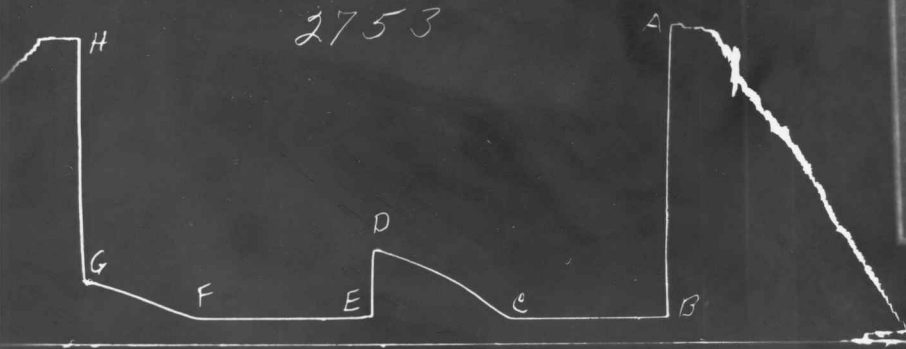
Point	Pressure		Time Given	Time Computed
A Initial Hydrostatic Mud	<u>2200</u> P.S.I.	Opened Tool	<u>10:43</u> A M	
B First Initial Flow Pressure	<u>160</u> P.S.I.	First Flow Pressure	<u>30</u> Mins.	<u>30</u> Mins.
C First Final Flow Pressure	<u>160</u> P.S.I.	Initial Closed-in Pressure	<u>30</u> Mins.	<u>30</u> Mins.
D Initial Closed-in Pressure	<u>560</u> P.S.I.	Second Flow Pressure	<u>30</u> Mins.	<u>30</u> Mins.
E Second Initial Flow Pressure	<u>160</u> P.S.I.	Final Closed-in Pressure	<u>30</u> Mins.	<u>25</u> Mins.
F Second Final Flow Pressure	<u>160</u> P.S.I.			
G Final Closed-in Pressure	<u>380</u> P.S.I.			
H Final Hydrostatic Mud	<u>2190</u> P.S.I.			

### PRESSURE BREAKDOWN

<b>First Flow Press.</b> Breakdown: <u>6</u> Inc. of <u>5</u> mins. and a final inc. of <u>0</u> Min.	<b>Initial Shut-In</b> Breakdown: <u>6</u> Inc. of <u>5</u> mins. and a final inc. of <u>0</u> Min.	<b>Second Flow Pressure</b> Breakdown: <u>6</u> Inc. of <u>5</u> mins. and a final inc. of <u>0</u> Min.	<b>Final Shut-In</b> Breakdown: <u>5</u> Inc. of <u>5</u> mins. and a final inc. of <u>0</u> Min.
--	--	---	--

Point Mins.	Press.	Point Minutes	Press.	Point Minutes	Press.	Point Minutes	Press.
P 1 <u>5</u>	<u>160</u>	<u>5</u>	<u>240</u>	<u>5</u>	<u>160</u>	<u>5</u>	<u>240</u>
P 2 <u>10</u>	<u>160</u>	<u>10</u>	<u>340</u>	<u>10</u>	<u>160</u>	<u>10</u>	<u>265</u>
P 3 <u>15</u>	<u>160</u>	<u>15</u>	<u>400</u>	<u>15</u>	<u>160</u>	<u>15</u>	<u>300</u>
P 4 <u>20</u>	<u>160</u>	<u>20</u>	<u>480</u>	<u>20</u>	<u>160</u>	<u>20</u>	<u>340</u>
P 5 <u>25</u>	<u>160</u>	<u>25</u>	<u>510</u>	<u>25</u>	<u>160</u>	<u>25</u>	<u>380</u>
P 6 <u>30</u>	<u>160</u>	<u>30</u>	<u>560</u>	<u>30</u>	<u>160</u>		
P 7 _____							
P 8 _____							
P 9 _____							
P10 _____							
P11 _____							
P12 _____							
P13 _____							
P14 _____							
P15 _____							
P16 _____							
P17 _____							
P18 _____							
P19 _____							
P20 _____							

2753



DRILLING CO.

Johnson

# WEY DRILLING COMPANY

TESTING DIVISION

Nº 2754

Lease & Well No. Met Inc. Metheny #1

Elevation \_\_\_\_\_ Ticket Number \_\_\_\_\_

Date 11-17-65 Sec. \_\_\_\_\_ Twp. \_\_\_\_\_ Range \_\_\_\_\_ County Rooks State Kansas

Test Approved by Jay Diehl's Garvey Representative Doyle Folker's

Formation Test No. 3 O.K.  Misrun  Interval Tested From 3751 to 3784 Total Depth 3784

Size Main Hole 7 7/8 Rat Hole  Conv.  B.T.  Damaged  Yes  No  Conv.  B.T.  Damaged  Yes  No

Packer Depth 3745 Ft. Size 6 3/4 Packer Depth 3751 Ft. Size 6 3/4

Straddle  Yes  No  Conv.  B.T.  Damaged  Yes  No

Packer Depth \_\_\_\_\_ Ft. Size \_\_\_\_\_

Tool Size 5" Tool Jt. Size 5 1/2" Anchor Length 3.3 Ft. Size 4 1/2 FH

RECORDERS Depth 3779 Ft. Clock No. 51 Depth 3781 Ft. Clock No. 52

Top Make Western Cap. 4000 No. 51 Inside  Outside  Bottom Make Western Cap. 4000 No. 52 Inside  Outside

Below Straddle: Depth \_\_\_\_\_ Clock No. \_\_\_\_\_ Inside  Outside  Depth \_\_\_\_\_ Ft. Clock No. \_\_\_\_\_ Inside  Outside

Top Make \_\_\_\_\_ Cap. \_\_\_\_\_ No. \_\_\_\_\_ Inside  Outside  Bottom Make \_\_\_\_\_ Cap. \_\_\_\_\_ No. \_\_\_\_\_ Inside  Outside

Time Set Packer 8:49 A M

Tool Open I.F.P. From 8:52 M. to 9:22 M. - Hr. 30 Min. From (B) 90 P.S.I. To (C) 90 P.S.I.

Tool Closed I.C.I.P. From 9:22 M. to 9:52 M. - Hr. 30 Min. (D) 110 P.S.I.

Tool Open F.F.P. From 9:52 M. to 10:22 M. - Hr. 30 Min From (E) 90 P.S.I. To (F) 10 P.S.I.

Tool Closed F.C.I.P. From 10:22 M. to 10:52 M. - Hr. 30 Min. (G) 90 P.S.I.

Initial Hydrostatic Pressure (A) 2280 P.S.I. Final Hydrostatic Pressure (H) 2280 P.S.I.

SURFACE Size Choke 4 In. Max. Press. P.S.I. \_\_\_\_\_ Time \_\_\_\_\_ Description of Flow \_\_\_\_\_

INFORMATION \_\_\_\_\_ M. \_\_\_\_\_

\_\_\_\_\_ M. \_\_\_\_\_

\_\_\_\_\_ M. \_\_\_\_\_

BLOW WORK 25 MIN Bottom Choke Size 2 in.

Did Well Flow  Yes  No. Recovery Total Ft. 5' mud

Reversed Out  Yes  No Mud Type Starch Viscosity 95 Weight 10.4 Maximum Temp. 108 °F

EXTRA EQUIPMENT: Dual Packers Yes Safety Joint  Jars: Size \_\_\_\_\_ Make \_\_\_\_\_ Ser. No. \_\_\_\_\_

Type Circ. Sub. Halliburton Did Tool Plug? NO Where? \_\_\_\_\_ Did Packer Hold? Yes

Length Drill Pipe 3728 ft. I. D Drill Pipe 3 in. Length Weight Pipe \_\_\_\_\_ ft. I. D. Weight Pipe \_\_\_\_\_ in. Length Drill Collars \_\_\_\_\_ ft.

I. D. Drill Collars \_\_\_\_\_ in. Length D. S. T. Tool 56 ft.

Remarks \_\_\_\_\_

29-105-20W  
SW-NW-NF



