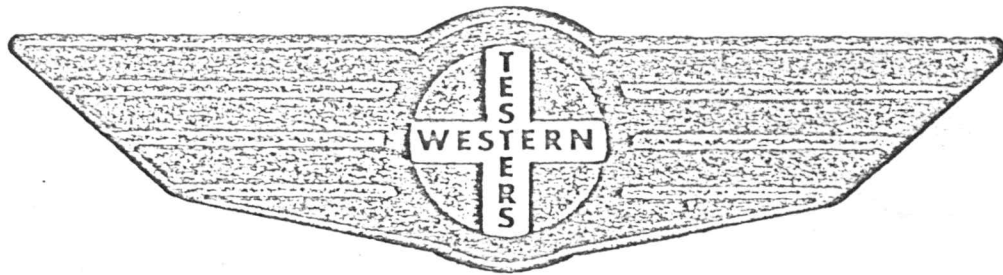


FORMATION

TEST

REPORT



Home Office:

Wichita, Kansas 67201

P.O. Box 1599

Phone (316) 262-5861

Company RINE EXPLORATION COMPANY Lease & Well No. #1-24 SUTOR Sec. 24 Twp. 10S Rge. 20W Test No. 1 Date 8/31/85

WESTERN TESTING CO. INC.
SUBSURFACE PRESSURE SURVEY

DATE: 8-31-85
CUSTOMER: RINE EXPLORATION COMPANY
WELL: 1-24 TEST: 1
ELEVATION (KB): 2133 FORMATION: TOPEKA
SECTION: 24 TOWNSHIP: 10S
RANGE: 20W COUNTY: ROOKS STATE: KANSAS
GAUGE SN #1566 RANGE: 4300 CLOCK: 12

INTERVAL TEST FROM: 3160 FT TO: 3206 FT TOTAL DEPTH: 3206 FT
DEPTH OF SELECTIVE ZONE: FT
PACKER DEPTH: 3155 FT SIZE: 6 3/4 IN PAKER DEPTH: 3160 FT SIZE: 6 3/4 IN
PACKER DEPTH: FT SIZE: IN PAKER DEPTH: FT SIZE: IN

DRILLING CONTRACTOR: ABERCROMBIE DRLG. #7
MUD TYPE: STARCH VISCOSITY: 50
WEIGHT: 9.4 WATER LOSS (CC): 7.2
CHLORIDES (P.P.M.): 35000

JARS - MAKE: SERIAL NUMBER:
DID WELL FLOW? NO REVERSED OUT? NO
DRILL COLLAR LENGTH: FT I.D.: IN
WEIGHT PIPE LENGTH: 667 FT I.D.: 3.2 IN
DRILL PIPE LENGTH: 2473 FT I.D.: 3.8 IN
TEST TOOL LENGTH: 20 FT TOOL SIZE: 5 1/2 OD IN
ANCHOR LENGTH: 46 FT SIZE: 5 1/2 OD IN
SURFACE CHOKE SIZE: 3/4 IN BOTTOM CHOKE SIZE: 3/4 IN
MAIN HOLE SIZE: 7 7/8 IN TOOL JOINT SIZE: 4 1/2 XH IN

BLOW: INITIAL FLOW PERIOD WEAK BLOW;
1 1/2 INCHES IN BUCKET.
FINAL FLOW PERIOD WEAK BLOW;
1/2 INCH IN BUCKET.

RECOVERED: 120 FT OF: WATERY MUD - SHOW OF OIL IN TOOL.
RECOVERED: FT OF: CHLORIDES 38000 PPM.
RECOVERED: FT OF:
RECOVERED: FT OF:
RECOVERED: FT OF:
RECOVERED: FT OF:
RECOVERED: FT OF:
RECOVERED: FT OF:
RECOVERED: FT OF:

REMARKS:

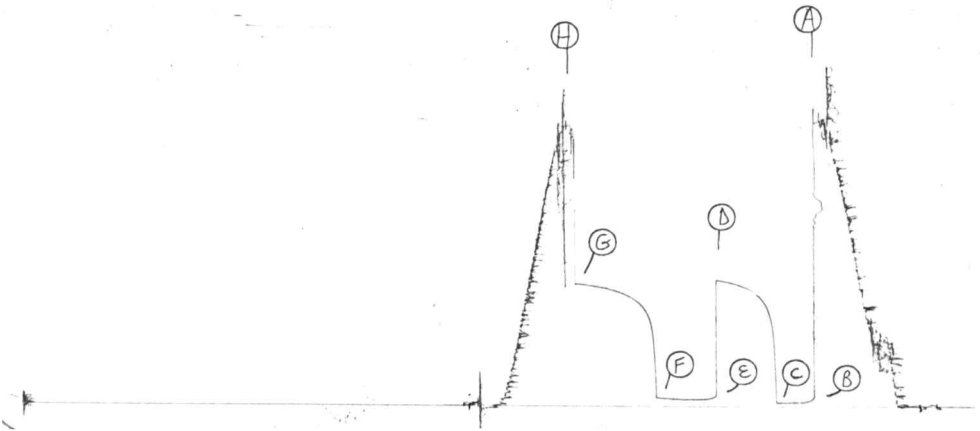
TIME SET PACKER(S): 11:40 AM TIME STARTED OFF BOTTOM: 2:40 PM
WELL TEMPERATURE: 107 °F
INITIAL HYDROSTATIC PRESSURE: (A) 1586 PSI
INITIAL FLOW PERIOD MIN: 30 (B) 25 PSI TO (C) 25 PSI
INITIAL CLOSED IN PERIOD MIN: 45 (D) 711 PSI
FINAL FLOW PERIOD MIN: 45 (E) 43 PSI TO (F) 52 PSI
FINAL CLOSED IN PERIOD MIN: 60 (G) 690 PSI
FINAL HYDROSTATIC PRESSURE (H) 1562 PSI

7564

TKT # 9963

FINC Exp.
DST 1

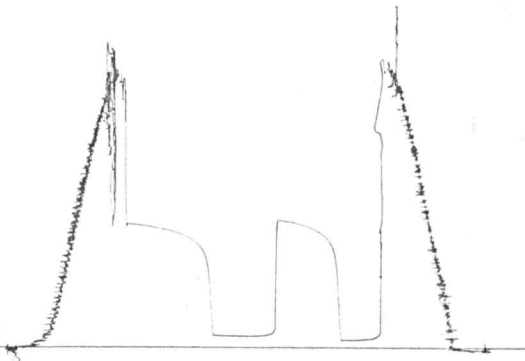
I



12001
TKT # 9963

NINC EXP
DST 1

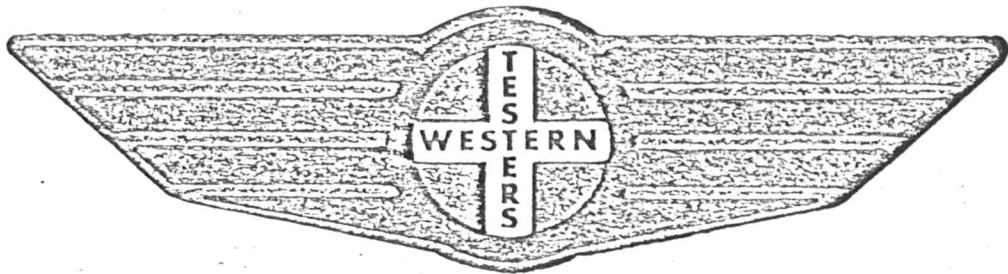
0



FORMATION

TEST

REPORT



Home Office:

Wichita, Kansas 67201

P.O. Box 1599

Phone (316) 262-5861

Company _____ KLINE EXPLORATION COMPANY Lease & Well No. #1-74 SU10K Sec. 24 Twp. 10S Rge. 20W Test No. 7 Date 9/2/83

WESTERN TESTING CO. INC.
SUBSURFACE PRESSURE SURVEY

DATE: 9-2-85
CUSTOMER: RINE EXPLORATION COMPANY
WELL: 1-24 TEST: 2
ELEVATION (KB): 2133 FORMATION: KANSAS CITY/MARM.
SECTION: 24 TOWNSHIP: 10S
RANGE: 20W COUNTY: ROOKS STATE: KANSAS
GAUGE SN #1566 RANGE: 4300 CLOCK: 12

INTERVAL TEST FROM: 3527 FT TO: 3657 FT TOTAL DEPTH: 3657 FT
DEPTH OF SELECTIVE ZONE: FT
PACKER DEPTH: 3522 FT SIZE: 6 3/4 IN PAKER DEPTH: 3527 FT SIZE: 6 3/4 IN
PACKER DEPTH: FT SIZE: IN PAKER DEPTH: FT SIZE: IN

DRILLING CONTRACTOR: ABERCROMBIE DRLG. #7
MUD TYPE: STARCH VISCOSITY: 43
WEIGHT: 9.7 WATER LOSS (CC): 9.7
CHLORIDES (P.P.M.): 27000
JARS - MAKE: SERIAL NUMBER:
DID WELL FLOW? NO REVERSED OUT? NO
DRILL COLLAR LENGTH: FT I.D.: IN
WEIGHT PIPE LENGTH: 604 FT I.D.: 3.2 IN
DRILL PIPE LENGTH: 2903 FT I.D.: 3.8 IN
TEST TOOL LENGTH: 20 FT TOOL SIZE: 5 1/2 OD IN
ANCHOR LENGTH: 130 FT SIZE: 5 1/2 OD IN
SURFACE CHOKE SIZE: 3/4 IN BOTTOM CHOKE SIZE: 3/4 IN
MAIN HOLE SIZE: 7 7/8 IN TOOL JOINT SIZE: 4 1/2 XH IN

BLOW: INITIAL FLOW PERIOD WEAK BLOW;
DEAD IN 20 MINUTES.
FINAL FLOW PERIOD WEAK BLOW;
DEAD IN 5 MINUTES.

RECOVERED: 10 FT OF: DRILLING MUD.
RECOVERED: FT OF:
RECOVERED: FT OF:
RECOVERED: FT OF:
RECOVERED: FT OF:
RECOVERED: FT OF:
RECOVERED: FT OF:
RECOVERED: FT OF:
RECOVERED: FT OF:

REMARKS:

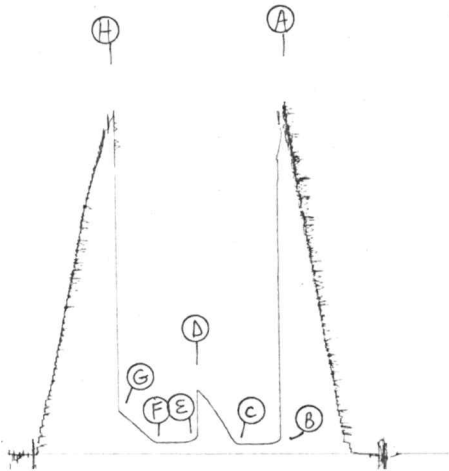
TIME SET PACKER(S): 11:35 AM TIME STARTED OFF BOTTOM: 1:35 PM
WELL TEMPERATURE: 112 'F
INITIAL HYDROSTATIC PRESSURE: (A) 1886 PSI
INITIAL FLOW PERIOD MIN: 30 (B) 55 PSI TO (C) 55 PSI
INITIAL CLOSED IN PERIOD MIN: 33 (D) 360 PSI
FINAL FLOW PERIOD MIN: 30 (E) 64 PSI TO (F) 64 PSI
FINAL CLOSED IN PERIOD MIN: 27 (G) 238 PSI
FINAL HYDROSTATIC PRESSURE (H) 1860 PSI

1566

TKT # 9964.

Kinic Exp.
DST2

I.



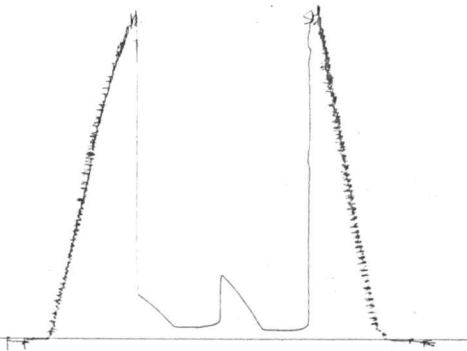
15629

TKT # 9964.

RIN Exp

PST 2

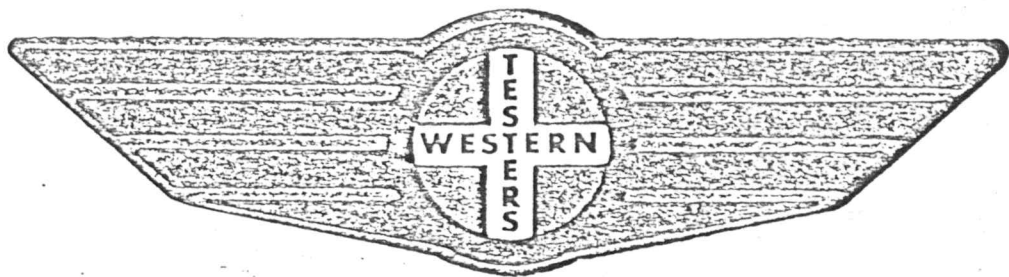
O



FORMATION

TEST

REPORT



Home Office:

Wichita, Kansas 67201

P.O. Box 1599

Phone (316) 262-5861

Company _____ KLINE EXPLORATION COMPANY _____ Lease & Well No. _____ #1-24 SU10K _____ Sec. _____ 24 _____ Twp. _____ 10S _____ Rge. _____ 20W Test No. _____ 3 _____ Date _____ 9/7/83

WESTERN TESTING CO. INC.
SUBSURFACE PRESSURE SURVEY

DATE: 9-2-85
CUSTOMER: RINE EXPLORATION COMPANY
WELL: 1-24 TEST: 3
ELEVATION (KB): 2133 FORMATION: ARBUCKLE
SECTION: 24 TOWNSHIP: 10S
RANGE: 20W COUNTY: ROOKS STATE: KANSAS
GAUGE SN #1566 RANGE: 4300 CLOCK: 12

INTERVAL TEST FROM: 3636 FT TO: 3696 FT TOTAL DEPTH: 3696 FT
DEPTH OF SELECTIVE ZONE: FT
PACKER DEPTH: 3631 FT SIZE: 6 3/4 IN PAKER DEPTH: 3636 FT SIZE: 6 3/4 IN
PACKER DEPTH: FT SIZE: IN PAKER DEPTH: FT SIZE: IN

DRILLING CONTRACTOR: ABERCROMBIE DRLG. #7
MUD TYPE: STARCH VISCOSITY: 43
WEIGHT: 9.7 WATER LOSS (CC): 12
CHLORIDES (P.P.M.): 27000
JARS - MAKE: SERIAL NUMBER:
DID WELL FLOW? NO REVERSED OUT? NO
DRILL COLLAR LENGTH: FT I.D.: IN
WEIGHT PIPE LENGTH: 635 FT I.D.: 3.2 IN
DRILL PIPE LENGTH: 2981 FT I.D.: 3.8 IN
TEST TOOL LENGTH: 20 FT TOOL SIZE: 5 1/2 OD IN
ANCHOR LENGTH: 60 FT SIZE: 5 1/2 OD IN
SURFACE CHOKE SIZE: 3/4 IN BOTTOM CHOKE SIZE: 3/4 IN
MAIN HOLE SIZE: 7 7/8 IN TOOL JOINT SIZE: 4 1/2 XH IN

BLOW: INITIAL FLOW PERIOD STRONG BLOW;
BOTTOM OF BUCKET IN 5 MINUTES.
FINAL FLOW PERIOD STRONG BLOW;
BOTTOM OF BUCKET IN 10 MINUTES.

RECOVERED: 154 FT OF: OIL CUT MUD
RECOVERED: FT OF: (10% OIL; 90% MUD).
RECOVERED: 124 FT OF: OIL CUT GASSY MUD
RECOVERED: FT OF: (65% OIL; 10% MUD; 25% GAS).
RECOVERED: 434 FT OF: GASSY OIL (65% OIL; 35% GAS).
RECOVERED: FT OF: (25 GRAVITY AT 86 DEGREES).
RECOVERED: FT OF:
RECOVERED: FT OF:
RECOVERED: FT OF:

REMARKS: SLIGHT PLUGGING ACTION FIRST
HALF OF INITIAL FLOW PERIOD.

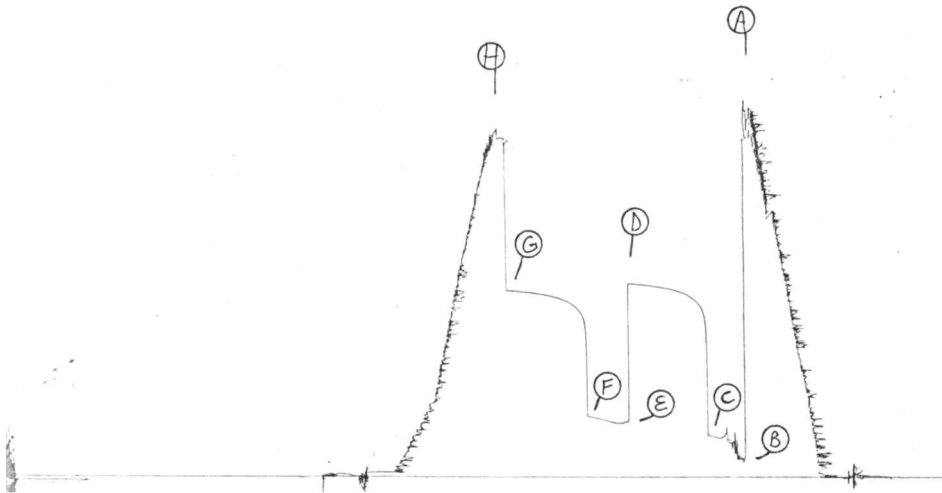
TIME SET PACKER(S): 11:05 PM TIME STARTED OFF BOTTOM: 2:05 AM
WELL TEMPERATURE: 113 'F
INITIAL HYDROSTATIC PRESSURE: (A) 1976 PSI
INITIAL FLOW PERIOD MIN: 30 (B) 98 PSI TO (C) 229 PSI
INITIAL CLOSED IN PERIOD MIN: 60 (D) 1070 PSI
FINAL FLOW PERIOD MIN: 30 (E) 297 PSI TO (F) 334 PSI
FINAL CLOSED IN PERIOD MIN: 60 (G) 1030 PSI
FINAL HYDROSTATIC PRESSURE (H) 1906 PSI

1566

MHC Exp
DST3

TKT # 9965

I



13629

TKT # 9965

Rine Exp
DST 3

O

