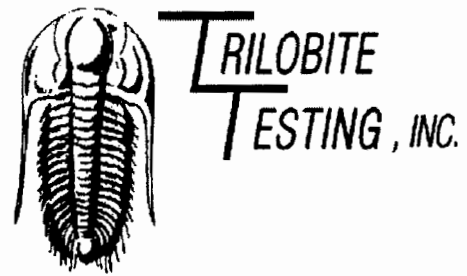


34-10s-21w

15-065-23111



DRILL STEM TEST REPORT

Prepared For: **Murfin Drilling Company**
 250 N Water Ste 300
 Wichita KS 67202

ATTN: Terry Mcloed

34-10s-21w-Rooks

Lewis 1-34

Start Date: 2005.12.10 @ 04:29:28
 End Date: 2005.12.10 @ 13:49:58
 Job Ticket #: 24581 DST #: 1

CONFIDENTIAL
FEB 16 2006
KCC

RECEIVED
FEB 17 2006
KCC WICHITA

Trilobite Testing, Inc
 PO Box 362 Hays, KS 67601
 ph: 785-625-4778 fax: 785-625-5620

Murfin Drilling Company
 Lewis 1-34
 34-10s-21w-Rooks
 DST # 1
 ARB
 2005.12.10



**TRILOBITE
TESTING, INC.**

DRILL STEM TEST REPORT

TOOL DIAGRAM

Murfin Drilling Company

Lewis 1-34

250 N Water Ste 300
Wichita KS 67202

34-10s-21w-Rooks

Job Ticket: 24581

DST#: 1

ATTN: Terry Mcloed

Test Start: 2005.12.10 @ 04:29:28

Tool Information

Drill Pipe:	Length: 3608.00 ft	Diameter: 3.80 inches	Volume: 50.61 bbl	Tool Weight: 2000.00 lb
Heavy Wt. Pipe:	Length: ft	Diameter: 2.25 inches	Volume: - bbl	Weight set on Packer: 25000.00 lb
Drill Collar:	Length: 155.00 ft	Diameter: 2.25 inches	Volume: 0.76 bbl	Weight to Pull Loose: 35000.00 lb
			Total Volume: - bbl	Tool Chased 0.00 ft
Drill Pipe Above KB:	12.00 ft			String Weight: Initial 30000.00 lb
Depth to Top Packer:	3771.00 ft			Final 33000.00 lb
Depth to Bottom Packer:	ft			
Interval between Packers:	10.00 ft			
Tool Length:	30.00 ft			
Number of Packers:	2	Diameter: 6.75 inches		

Tool Comments:

Tool Description	Length (ft)	Serial No.	Position	Depth (ft)	Accum. Lengths
------------------	-------------	------------	----------	------------	----------------

Shut In Tool	5.00			3756.00	
Hydraulic tool	5.00			3761.00	
Packer	5.00			3766.00	20.00 Bottom Of Top Packer
Packer	5.00			3771.00	
Stubb	1.00			3772.00	
Recorder	0.00	8166	Inside	3772.00	
Perforations	6.00			3778.00	
Recorder	0.00	11020	Inside	3778.00	
Bullnose	3.00			3781.00	10.00 Bottom Packers & Anchor
Total Tool Length:	30.00				



TRILOBITE
TESTING, INC.

DRILL STEM TEST REPORT

FLUID SUMMARY

Murfin Drilling Company

Lewis 1-34

250 N Water Ste 300
Wichita KS 67202

34-10s-21w-Rooks

Job Ticket: 24581

DST#: 1

ATTN: Terry Mcloed

Test Start: 2005.12.10 @ 04:29:28

Mud and Cushion Information

Mud Type: Gel Chem	Cushion Type:	Oil API:	deg API
Mud Weight: 9.00 lb/gal	Cushion Length: ft	Water Salinity:	ppm
Viscosity: 55.00 sec/qt	Cushion Volume: bbl		
Water Loss: 7.18 in ³	Gas Cushion Type:		
Resistivity: ohm.m	Gas Cushion Pressure: psig		
Salinity: ppm			
Filter Cake: inches			

Recovery Information

Recovery Table

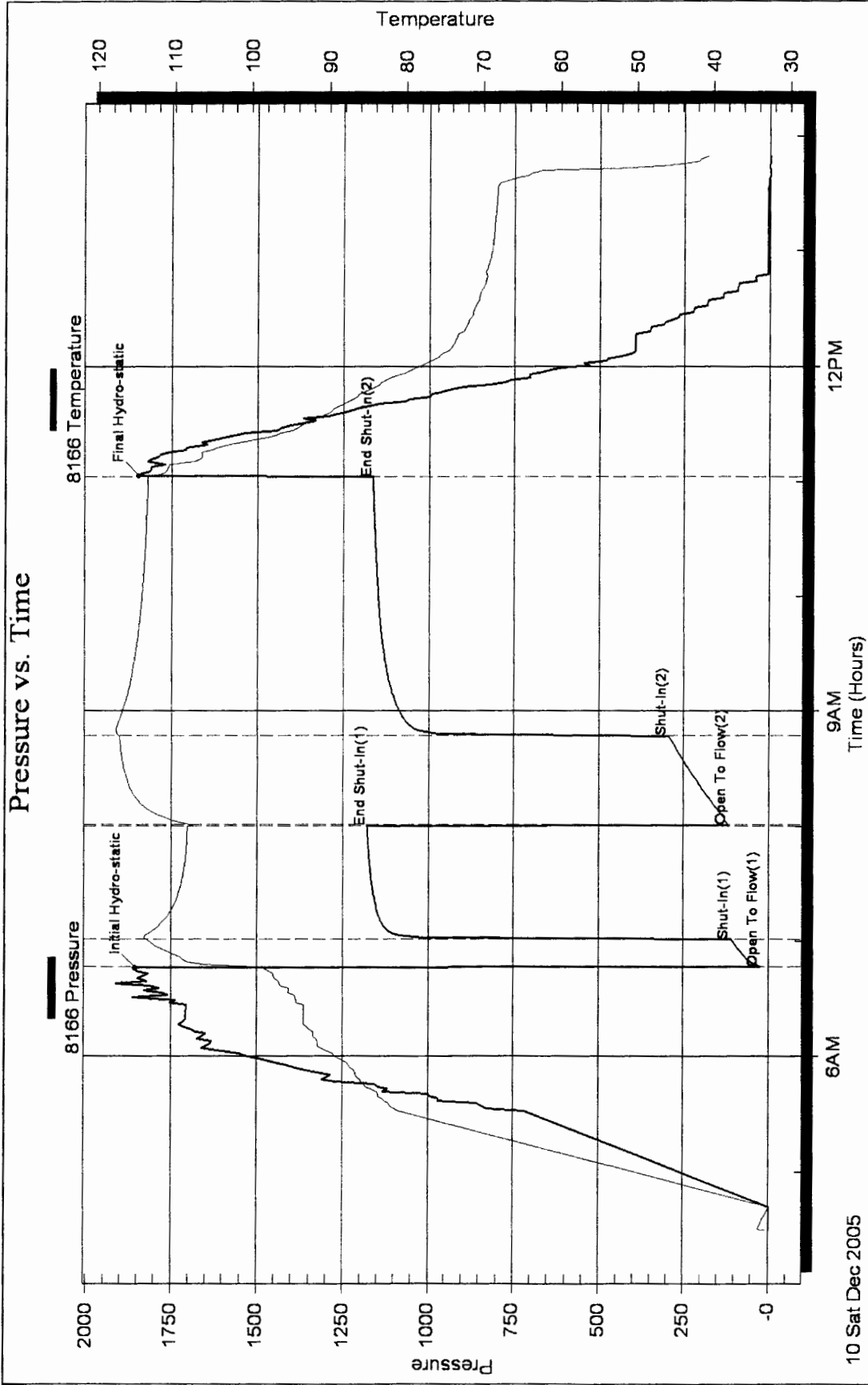
Length ft	Description	Volume bbl
814.00	Free Oil	10.006

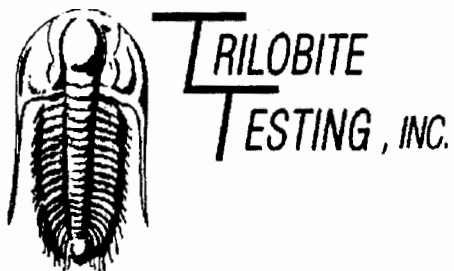
Total Length: ft Total Volume: 10.035 bbl

Num Fluid Samples: 0 Num Gas Bombs: 0 Serial #:

Laboratory Name: Laboratory Location:

Recovery Comments:





DRILL STEM TEST REPORT

Prepared For: **Murfin Drilling Company**

250 N Water Ste 300
Wichita KS 67202

ATTN: Terry Mcloed

34-10s-21w-Rooks

Lewis 1-34

Start Date: 2005.12.10 @ 20:51:12

End Date: 2005.12.11 @ 05:58:12

Job Ticket #: 24582 DST #: 2

Trilobite Testing, Inc
PO Box 362 Hays, KS 67601
ph: 785-625-4778 fax: 785-625-5620

Murfin Drilling Company

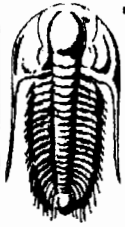
Lewis 1-34

34-10s-21w-Rooks

DST # 2

ARB

2005.12.10



**TRILOBITE
TESTING, INC.**

DRILL STEM TEST REPORT

Murfin Drilling Company

250 N Water Ste 300
Wichita KS 67202

ATTN: Terry Mcloed

Lewis 1-34

34-10s-21w-Rooks

Job Ticket: 24582

DST#: 2

Test Start: 2005.12.10 @ 20:51:12

GENERAL INFORMATION:

Formation: **ARB**

Deviated: **No** Whipstock: **ft (KB)**

Time Tool Opened: 23:25:27

Time Test Ended: 05:58:12

Test Type: Conventional Bottom Hole

Tester: Joe

Unit No: 22

Interval: **3785.00 ft (KB) To 3796.00 ft (KB) (TVD)**

Total Depth: **3796.00 ft (KB) (TVD)**

Hole Diameter: **7.80 inches** Hole Condition: **Good**

Reference Elevations: **2176.00 ft (KB)**

2171.00 ft (CF)

KB to GR/CF: **5.00 ft**

Serial #: 8166

Inside

Press@RunDepth: **450.18 psig @ 3786.00 ft (KB)**

Capacity: **7000.00 psig**

Start Date: **2005.12.10**

End Date:

2005.12.11

Last Calib.: **2005.12.11**

Start Time: **20:51:13**

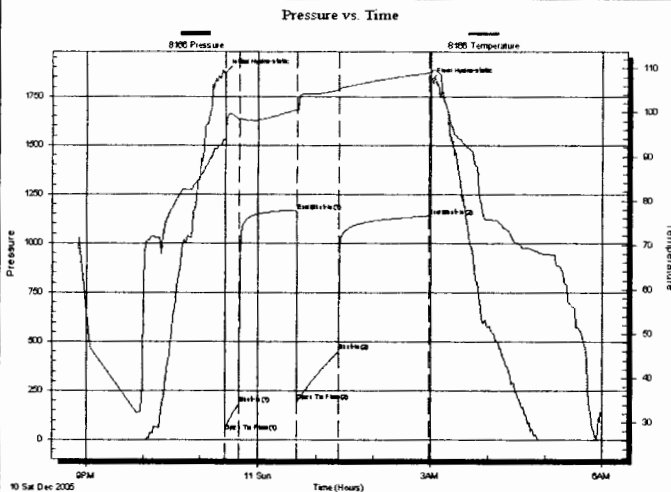
End Time:

05:58:12

Time On Btm: **2005.12.10 @ 23:25:12**

Time Off Btm: **2005.12.11 @ 02:59:12**

TEST COMMENT: IF-Strong Blow Blew off BOB in 2 min
IS-Weak Surface Blow back
FF-Strong Blow Blew off BOB in 3 min
FSI-Weak Surface Blow back



PRESSURE SUMMARY

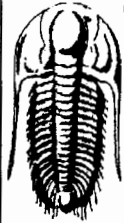
Time (Min.)	Pressure (psig)	Temp (deg F)	Annotation
0	1870.36	93.81	Initial Hydro-static
1	38.52	93.02	Open To Flow (1)
15	180.63	98.43	Shut-In(1)
75	1161.91	100.62	End Shut-In(1)
75	194.44	100.38	Open To Flow (2)
119	450.18	105.13	Shut-In(2)
214	1138.99	108.96	End Shut-In(2)
214	1827.23	109.23	Final Hydro-static

Recovery

Length (ft)	Description	Volume (bbl)
1271.00	Free Oil	16.42

Gas Rates

	Choke (inches)	Pressure (psig)	Gas Rate (Mcf/d)



**TRILOBITE
TESTING, INC.**

DRILL STEM TEST REPORT

TOOL DIAGRAM

Murfin Drilling Company
250 N Water Ste 300
Wichita KS 67202
ATTN: Terry Mcloed

Lewis 1-34
34-10s-21w-Rooks
Job Ticket: 24582 **DST#: 2**
Test Start: 2005.12.10 @ 20:51:12

Tool Information

Drill Pipe:	Length: 3641.00 ft	Diameter: 3.80 inches	Volume: 51.07 bbl	Tool Weight: 2000.00 lb
Heavy Wt. Pipe:	Length: ft	Diameter: 2.25 inches	Volume: - bbl	Weight set on Packer: 25000.00 lb
Drill Collar:	Length: 155.00 ft	Diameter: 2.25 inches	Volume: 0.76 bbl	Weight to Pull Loose: 37000.00 lb
			<u>Total Volume: - bbl</u>	Tool Chased 0.00 ft
Drill Pipe Above KB:	31.00 ft			String Weight: Initial 33000.00 lb
Depth to Top Packer:	3785.00 ft			Final 37000.00 lb
Depth to Bottom Packer:	ft			
Interval between Packers:	11.00 ft			
Tool Length:	31.00 ft			
Number of Packers:	2	Diameter: 6.75 inches		

Tool Comments:

Tool Description	Length (ft)	Serial No.	Position	Depth (ft)	Accum. Lengths
Shut In Tool	5.00			3770.00	
Hydraulic tool	5.00			3775.00	
Packer	5.00			3780.00	20.00 Bottom Of Top Packer
Packer	5.00			3785.00	
Stubb	1.00			3786.00	
Recorder	0.00	8166	Inside	3786.00	
Perforations	7.00			3793.00	
Recorder	0.00	11020	Inside	3793.00	
Bullnose	3.00			3796.00	11.00 Bottom Packers & Anchor
Total Tool Length:	31.00				



**TRILOBITE
TESTING, INC.**

DRILL STEM TEST REPORT

FLUID SUMMARY

Murfin Drilling Company

Lewis 1-34

250 N Water Ste 300
Wichita KS 67202

34-10s-21w-Rooks

Job Ticket: 24582

DST#: 2

ATTN: Terry Mcloed

Test Start: 2005.12.10 @ 20:51:12

Mud and Cushion Information

Mud Type: Gel Chem

Cushion Type:

Oil API:

deg API

Mud Weight: 9.00 lb/gal

Cushion Length:

ft

Water Salinity:

ppm

Viscosity: 56.00 sec/qt

Cushion Volume:

bbl

Water Loss: 7.59 in³

Gas Cushion Type:

Resistivity: ohm.m

Gas Cushion Pressure:

psig

Salinity: ppm

Filter Cake: inches

Recovery Information

Recovery Table

Length ft	Description	Volume bbl
1271.00	Free Oil	16.417

Total Length: 1271.00 ft

Total Volume: 16.417 bbl

Num Fluid Samples: 0

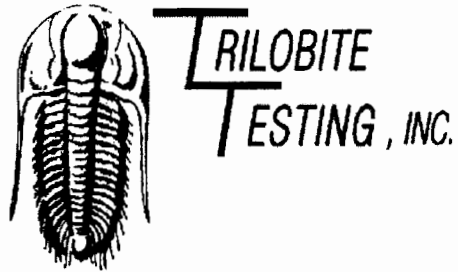
Num Gas Bombs: 0

Serial #:

Laboratory Name:

Laboratory Location:

Recovery Comments:



DRILL STEM TEST REPORT

Prepared For: **Murfin Drilling Company**

250 N Water Ste 300
Wichita KS 67202

ATTN: Terry Mcloed

34-10s-21w-Rooks

Lewis 1-34

Start Date: 2005.12.11 @ 11:09:53

End Date: 2005.12.11 @ 20:29:23

Job Ticket #: 24583 DST #: 3

Trilobite Testing, Inc
PO Box 362 Hays, KS 67601
ph: 785-625-4778 fax: 785-625-5620

Murfin Drilling Company

Lewis 1-34

34-10s-21w-Rooks

DST # 3

ARB

2005.12.11



TRILOBITE TESTING, INC.

DRILL STEM TEST REPORT

Murfin Drilling Company
 250 N Water Ste 300
 Wichita KS 67202
 ATTN: Terry Mcloed

Lewis 1-34
34-10s-21w-Rooks
 Job Ticket: 24583 **DST#: 3**
 Test Start: 2005.12.11 @ 11:09:53

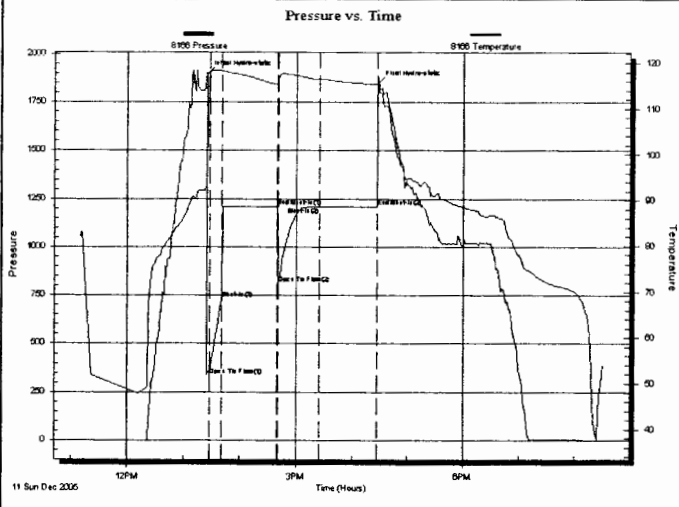
GENERAL INFORMATION:

Formation: **ARB**
 Deviated: **No** Whipstock: **ft (KB)** Test Type: **Conventional Bottom Hole**
 Time Tool Opened: 13:28:23 Tester: **Joe**
 Time Test Ended: 20:29:23 Unit No: **22**
 Interval: **3801.00 ft (KB) To 3811.00 ft (KB) (TVD)** Reference Elevations: **2176.00 ft (KB)**
 Total Depth: **3811.00 ft (KB) (TVD)** **2171.00 ft (CF)**
 Hole Diameter: **7.80 inches** Hole Condition: **Good** KB to GR/CF: **5.00 ft**

Serial #: 8166

Inside
 Press@RunDepth: **1207.55 psig @ 3802.00 ft (KB)** Capacity: **7000.00 psig**
 Start Date: **2005.12.11** End Date: **2005.12.11** Last Calib.: **2005.12.11**
 Start Time: **11:09:54** End Time: **20:29:23** Time On Btm: **2005.12.11 @ 13:25:23**
 Time Off Btm: **2005.12.11 @ 16:27:23**

TEST COMMENT: IF-Strong Blow Blew off BOB in 30 seconds
 ISI-Weak Surface Blow back died in 30 min
 FF-Strong Blow Blew off BOB in 5 seconds
 FSI-Weak Surface Blow back Died in 15 min



PRESSURE SUMMARY			
Time (Mn.)	Pressure (psig)	Temp (deg F)	Annotation
0	1897.08	93.21	Initial Hydro-static
3	335.14	117.83	Open To Flow (1)
16	730.86	118.13	Shut-In(1)
75	1208.10	115.31	End Shut-In(1)
75	809.63	114.10	Open To Flow (2)
120	1207.55	116.50	Shut-In(2)
182	1207.82	115.29	End Shut-In(2)
182	1845.09	115.60	Final Hydro-static

Recovery

Length (ft)	Description	Volume (bbl)
124.00	Muddy Water 10%M 90%W	0.61
1116.00	GMV/Sli SO 2%G 3%O 5% M	15.37
558.00	GyOCMyW 10%G 10%M 10% O70%M	7.83
434.00	GyOCW10%G15%O75%W	6.09
620.00	MyOyGyW10%M20%O30%G40%W	8.70

Gas Rates

Choke (inches)	Pressure (psig)	Gas Rate (Mcf/d)
----------------	-----------------	------------------



**TRILOBITE
TESTING, INC.**

DRILL STEM TEST REPORT

TOOL DIAGRAM

Murfin Drilling Company

Lewis 1-34

250 N Water Ste 300
Wichita KS 67202

34-10s-21w-Rooks

Job Ticket: 24583

DST#: 3

ATTN: Terry Mcloed

Test Start: 2005.12.11 @ 11:09:53

Tool Information

Drill Pipe:	Length: 3641.00 ft	Diameter: 3.80 inches	Volume: 51.07 bbl	Tool Weight: 2000.00 lb
Heavy Wt. Pipe:	Length: ft	Diameter: 2.25 inches	Volume: - bbl	Weight set on Packer: 25000.00 lb
Drill Collar:	Length: 155.00 ft	Diameter: 2.25 inches	Volume: 0.76 bbl	Weight to Pull Loose: 50000.00 lb
			<u>Total Volume: - bbl</u>	Tool Chased 0.00 ft
Drill Pipe Above KB:	15.00 ft			String Weight: Initial 32000.00 lb
Depth to Top Packer:	3801.00 ft			Final 44000.00 lb
Depth to Bottom Packer:	ft			
Interval between Packers:	10.00 ft			
Tool Length:	30.00 ft			
Number of Packers:	2	Diameter: 6.75 inches		

Tool Comments:

Tool Description

Length (ft) Serial No. Position Depth (ft) Accum. Lengths

Shut In Tool	5.00			3786.00	
Hydraulic tool	5.00			3791.00	
Packer	5.00			3796.00	20.00 Bottom Of Top Packer
Packer	5.00			3801.00	
Stubb	1.00			3802.00	
Recorder	0.00	8166	Inside	3802.00	
Perforations	6.00			3808.00	
Recorder	0.00	11020	Inside	3808.00	
Bullnose	3.00			3811.00	10.00 Bottom Packers & Anchor
Total Tool Length:	30.00				



**TRILOBITE
TESTING, INC.**

DRILL STEM TEST REPORT

FLUID SUMMARY

Murfin Drilling Company

Lewis 1-34

250 N Water Ste 300
Wichita KS 67202

34-10s-21w-Rooks

Job Ticket: 24583

DST#: 3

ATTN: Terry Mcloed

Test Start: 2005.12.11 @ 11:09:53

Mud and Cushion Information

Mud Type: Gel Chem

Cushion Type:

Oil API:

deg API

Mud Weight: 9.00 lb/gal

Cushion Length:

ft

Water Salinity:

ppm

Viscosity: 50.00 sec/qt

Cushion Volume:

bbl

Water Loss: 7.19 in³

Gas Cushion Type:

Resistivity: ohm.m

Gas Cushion Pressure:

psig

Salinity: ppm

Filter Cake: inches

Recovery Information

Recovery Table

Length ft	Description	Volume bbl
124.00	Muddy Water 10%M 90%W	0.610
1116.00	GMW Sli SO 2%G 3%O 5% M	15.372
558.00	GyOCMyW 10%G 10%M 10% O70%W	7.827
434.00	GyOCW10%G15%O75%W	6.088
620.00	MyOyGyW10%M20%O30%G40%W	8.697

Total Length: 2852.00 ft

Total Volume: 38.594 bbl

Num Fluid Samples: 0

Num Gas Bombs: 0

Serial #:

Laboratory Name:

Laboratory Location:

Recovery Comments:

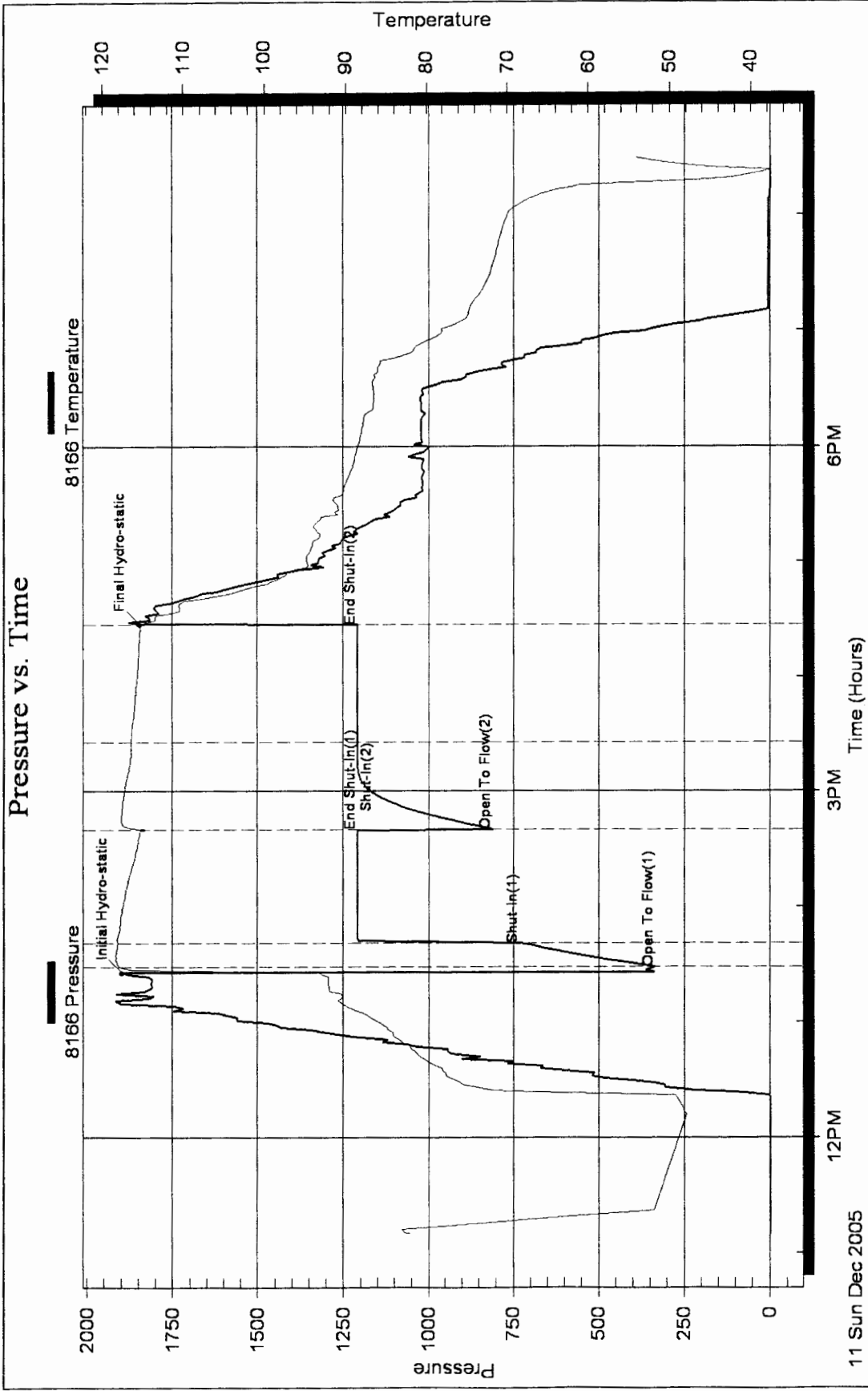
Serial #: 8166

Inside

Murfin Drilling Company

34-10s-21w-Rooks

DST Test Number: 3



11 Sun Dec 2005

12PM

3PM

Time (Hours)

6PM