

# TRILOBITE TESTING INC.

P.O. Box 1733 • Hays, Kansas 67601

RECEIVED  
APR 26 2010

## Test Ticket

NO. 37139 14200

Well Name & No. Seamac #1-19 BY: \_\_\_\_\_ Test No. 1 Date 4-23-10  
 Company Murfin Drilling Company, Inc. Elevation 2264 KB 2256 GL \_\_\_\_\_  
 Address 250 N Water, Suite 300, Wichita, KS.  
 Co. Rep / Geo. Paul Bunzelman Rig Murfin #8  
 Location: Sec. 19 Twp. 10s Rge. 21w Co. Ceraham State KS

Interval Tested 3530 - 3606 Zone Tested LKC-"A-0"  
 Anchor Length 76' Drill Pipe Run 3354 Mud Wt. 9.0  
 Top Packer Depth 3525 Drill Collars Run 180 Vis 49  
 Bottom Packer Depth 3530 Wt. Pipe Run 0 WL 6.8  
 Total Depth 3606 Chlorides 3,000 ppm System LCM Ø  
 Blow Description IFP - Fair Blow, Built to 4"  
ISI - Dead  
FFP - Fair Blow, Built to 10"  
FSI - Dead

Rec	Feet of	%gas	%oil	%water	%mud
<u>55</u>	<u>Gassy Oil</u>	<u>15</u>	<u>85</u>		
<u>60</u>	<u>Oil Cut Mud</u>		<u>15</u>		<u>85</u>
____	____	____	____	____	____
____	____	____	____	____	____
____	<u>90' GIP</u>	____	____	____	____
Rec Total <u>115</u>	BHT <u>108°</u>	Gravity <u>35</u>	API RW _____	@ _____ °F	Chlorides _____ ppm

- (A) Initial Hydrostatic 1739
- (B) First Initial Flow 47
- (C) First Final Flow 65
- (D) Initial Shut-In 1034
- (E) Second Initial Flow 68
- (F) Second Final Flow 91
- (G) Final Shut-In 1089
- (H) Final Hydrostatic 1720

- Test 1125-
- Jars \_\_\_\_\_
- Safety Joint 75-
- Circ Sub \_\_\_\_\_
- Hourly Standby \_\_\_\_\_
- Mileage 92 rt 115-
- Sampler \_\_\_\_\_
- Straddle \_\_\_\_\_
- Shale Packer \_\_\_\_\_
- Extra Packer \_\_\_\_\_
- Extra Recorder \_\_\_\_\_
- Day Standby \_\_\_\_\_
- Accessibility \_\_\_\_\_
- Sub Total 1315-

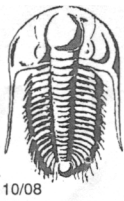
- T-On Location 20:22
- T-Started 22:22
- T-Open 00:08
- T-Pulled 4:08
- T-Out 5:42
- Comments \_\_\_\_\_
- Ruined Shale Packer \_\_\_\_\_
- Ruined Packer \_\_\_\_\_
- Extra Copies \_\_\_\_\_
- Sub Total Ø
- Total 1315-

Initial Open 30  
 Initial Shut-In 60  
 Final Flow 60  
 Final Shut-In 90

Approved By \_\_\_\_\_

Our Representative Jaron McLamson Thank You!

Trilobite Testing Inc. shall not be liable for damaged of any kind of the property or personnel of the one for whom a test is made, or for any loss suffered or sustained, directly or indirectly, through the use of its equipment, or its statements or opinion concerning the results of any test. tools lost or damaged in the hole shall be paid for at cost by the party for whom the test is made.



# TRILOBITE TESTING INC.

P.O. Box 1733 • Hays, Kansas 67601

RECEIVED  
APR 27 2010

## Test Ticket

NO. 37140

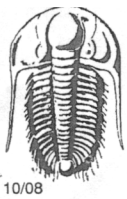
Well Name & No. Seamac #1-19 Test No. 2 Date 4-24-10  
 Company Murfin Drilling Company, Inc. Elevation 2261 KB 2256 GL  
 Address 250 N. Water, Suite 300, Wichita, KS.  
 Co. Rep / Geo. Paul Counselman Rig Murfin #8  
 Location: Sec. 19 Twp. 10S Rge. 2W Co. Graham State KS

Interval Tested 3630-3696 Zone Tested LKC - "G-H"  
 Anchor Length 66 Drill Pipe Run 3450 Mud Wt. 9.2  
 Top Packer Depth 3625 Drill Collars Run 180 Vis 55  
 Bottom Packer Depth 3630 Wt. Pipe Run Ø WL 6.8  
 Total Depth 3696 Chlorides 4200 ppm System LCM Ø  
 Blow Description IFP-Weak Blow, Dead in 12 min.  
ISI-Dead  
FFP-Dead  
FSI-Dead

Rec	Feet of	%gas	%oil	%water	%mud
<u>3</u>	<u>Mud w/oil specks</u>	<u>&lt; 1</u>		<u>99.9</u>	
Rec	Feet of	%gas	%oil	%water	%mud
Rec	Feet of	%gas	%oil	%water	%mud
Rec	Feet of	%gas	%oil	%water	%mud
Rec	Feet of	%gas	%oil	%water	%mud
Rec Total <u>3</u>	BHT <u>106°</u>	Gravity	API RW	@	F Chlorides

(A) Initial Hydrostatic 1791  Test 1125- T-On Location 15:48  
 (B) First Initial Flow 30  Jars \_\_\_\_\_ T-Started 16:30  
 (C) First Final Flow 32  Safety Joint 75- T-Open 19:09  
 (D) Initial Shut-In 326  Circ Sub \_\_\_\_\_ T-Pulled 21:09  
 (E) Second Initial Flow 32  Hourly Standby \_\_\_\_\_ T-Out 22:52  
 (F) Second Final Flow 33  Mileage 92rt 115- Comments \_\_\_\_\_  
 (G) Final Shut-In 369  Sampler \_\_\_\_\_  
 (H) Final Hydrostatic 1784  Straddle \_\_\_\_\_  
 Shale Packer \_\_\_\_\_  Ruined Shale Packer \_\_\_\_\_  
 Extra Packer \_\_\_\_\_  Ruined Packer \_\_\_\_\_  
 Extra Recorder \_\_\_\_\_  Extra Copies \_\_\_\_\_  
 Initial Open 30  
 Initial Shut-In 30  
 Final Flow 30  
 Final Shut-In 30  
 Sub Total Ø  
 Total 1315-  
 Sub Total 1315-

Approved By \_\_\_\_\_ Our Representative Jason McClemore Thank You  
 Trilobite Testing Inc. shall not be liable for damaged of any kind of the property or personnel of the one for whom a test is made, or for any loss suffered or sustained, directly or indirectly, through the use of its equipment, or its statements or opinion concerning the results of any test. tools lost or damaged in the hole shall be paid for at cost by the party for whom the test is made.



# TRILOBITE TESTING INC.

P.O. Box 1733 • Hays, Kansas 67601

RECEIVED  
APR 27 2010

## Test Ticket

NO. 37141

10/08

BY:

Well Name & No. Seance #1-19 Test No. 3 Date 4-25-10  
 Company Martin Drilling Company, Inc. Elevation 2261 KB 2256 GL  
 Address 250 N. Water, Suite 300, Wichita, Ks.  
 Co. Rep / Geo. Paul Gunzelman Rig Martin #8  
 Location: Sec. 19 Twp. 10s Rge. 21w Co. Coraham State KS

Interval Tested 3700 - 3771 Zone Tested LKC - "I-L"  
 Anchor Length 71' Drill Pipe Run 3514 Mud Wt. 9.2  
 Top Packer Depth 3695 Drill Collars Run 180 Vis 53  
 Bottom Packer Depth 3700 Wt. Pipe Run 0 WL 7.2  
 Total Depth 3771 Chlorides 5,400 ppm System LCM Ø  
 Blow Description IFF- packer failure, pull tool

Rec	Feet of	%gas	%oil	%water	%mud
<u>400</u>	<u>Drilling Mud</u>				
Rec	Feet of	%gas	%oil	%water	%mud
Rec	Feet of	%gas	%oil	%water	%mud
Rec	Feet of	%gas	%oil	%water	%mud
Rec	Feet of	%gas	%oil	%water	%mud

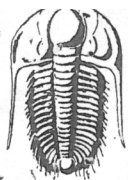
Rec Total 400 BHT \_\_\_\_\_ Gravity \_\_\_\_\_ API RW \_\_\_\_\_ @ \_\_\_\_\_ °F Chlorides \_\_\_\_\_ ppm

(A) Initial Hydrostatic 1822  Test 925' T-On Location 8:07  
 (B) First Initial Flow ~~\_\_\_\_\_~~  Jars \_\_\_\_\_ T-Started 8:59  
 (C) First Final Flow ~~\_\_\_\_\_~~  Safety Joint 75 T-Open 10:38  
 (D) Initial Shut-In ~~\_\_\_\_\_~~  Circ Sub \_\_\_\_\_ T-Pulled 10:40  
 (E) Second Initial Flow ~~\_\_\_\_\_~~  Hourly Standby \_\_\_\_\_ T-Out 12:40  
 (F) Second Final Flow ~~\_\_\_\_\_~~  Mileage 92 ft 115' Comments \_\_\_\_\_  
 (G) Final Shut-In \_\_\_\_\_  Sampler \_\_\_\_\_  
 (H) Final Hydrostatic 1809  Straddle \_\_\_\_\_  
 Shale Packer \_\_\_\_\_  Ruined Shale Packer \_\_\_\_\_  
 Extra Packer \_\_\_\_\_  Ruined Packer \_\_\_\_\_  
 Extra Recorder \_\_\_\_\_  Extra Copies \_\_\_\_\_  
 Day Standby \_\_\_\_\_ Sub Total Ø  
 Accessibility \_\_\_\_\_ Total 1115  
 Sub Total 1115'

Approved By \_\_\_\_\_ Our Representative Jason McLenon

Thank You

Trilobite Testing Inc. shall not be liable for damaged of any kind of the property or personnel of the one for whom a test is made, or for any loss suffered or sustained, directly or indirectly, through the use of its equipment, or its statements or opinion concerning the results of any test. tools lost or damaged in the hole shall be paid for at cost by the party for whom the test is made.



# TRILOBITE TESTING INC.

P.O. Box 1733 • Hays, Kansas 67601

RECEIVED  
APR 27 2010

## Test Ticket

NO. 37142

10/08

RY:

Well Name & No. Seamae #1-19 Test No. 4 Date 4-25-10  
 Company Murfin Drilling Company, Inc Elevation 2261 KB 2286 GL  
 Address 250 N. Water, Suite 300, Wichita, KS.  
 Co. Rep / Geo. Paul Ganzelman Rig Murfin #8  
 Location: Sec. 19 Twp. 10s Rge. 21w Co. Graham State Ks

Interval Tested 3694 - 3771 Zone Tested LKC - "I-L"  
 Anchor Length 77 Drill Pipe Run 3514 Mud Wt. 9.2  
 Top Packer Depth 3689 Drill Collars Run 180 Vis 53  
 Bottom Packer Depth 3694 Wt. Pipe Run 0 WL 7.2  
 Total Depth 3771 Chlorides 5,400 ppm System LCM Ø  
 Blow Description IFP - Fair Blow, Built to 6"  
ISI - Dead  
FFP - Fair Blow, Built to 7"  
FSI - Dead

Rec	Feet of	%gas	%oil	%water	%mud
<u>210</u>	<u>Muddy Water</u>			<u>65</u>	<u>35</u>
Rec	Feet of	%gas	%oil	%water	%mud
Rec	Feet of	%gas	%oil	%water	%mud
Rec	Feet of	%gas	%oil	%water	%mud
Rec	Feet of	%gas	%oil	%water	%mud

Rec Total 210 BHT 112° Gravity 22.6 API RW 256 @ 62 °F Chlorides 30,000 ppm  
 (A) Initial Hydrostatic 1841  Test 1125 T-On Location 12:40  
 (B) First Initial Flow 36  Jars T-Started 12:50  
 (C) First Final Flow 101  Safety Joint 75 T-Open 14:15  
 (D) Initial Shut-In 1232  Circ Sub T-Pulled 18:15  
 (E) Second Initial Flow 104  Hourly Standby T-Out 20:37  
 (F) Second Final Flow 141  Mileage 92.4 Comments \_\_\_\_\_  
 (G) Final Shut-In 1146  Sampler \_\_\_\_\_  
 (H) Final Hydrostatic 1816  Straddle \_\_\_\_\_  
 Shale Packer \_\_\_\_\_  Ruined Shale Packer \_\_\_\_\_  
 Extra Packer \_\_\_\_\_  Ruined Packer \_\_\_\_\_  
 Extra Recorder \_\_\_\_\_  Extra Copies \_\_\_\_\_  
 Initial Open 30  
 Initial Shut-In 60  
 Final Flow 60  
 Final Shut-In 90  
 Day Standby \_\_\_\_\_  
 Accessibility \_\_\_\_\_  
 Sub Total 1200 Sub Total Ø  
 Total 1200

Approved By \_\_\_\_\_ Our Representative Jason McLean Thank You  
 Trilobite Testing Inc. shall not be liable for damaged of any kind of the property or personnel of the one for whom a test is made, or for any loss suffered or sustained, directly or indirectly, through the use of its equipment, or its statements or opinion concerning the results of any test. tools lost or damaged in the hole shall be paid for at cost by the party for whom the test is made.

DISTRIBUTION LIST FOR LOGS & DSTS  
WELL NAME: Seamac #1-19

Operator: Murfin Drilling Company, Inc.  
Contractor: Murfin Drilling Company, Inc.

T. Warren Hall  
3015 Thunderbird Ct.  
Hays, KS 67601

Phone: 785-625-2722  
Copies: 1 set logs & dsts  
Email: [warren67601@yahoo.com](mailto:warren67601@yahoo.com)

JFH Investments Properties, LLC  
125 N. Market, Suite 1415  
Wichita, KS 67202

Phone: 316-265-8541  
Fax: 316-265-2805  
Copies: 1 set logs & dsts  
Email: [fred@jfredhambrightinc.com](mailto:fred@jfredhambrightinc.com)

Hat Creek Energy, LLC  
Attn: Greg Wilcox  
3575 Cherry Creek North Drive  
Denver, CO 80209  
Email: [gwilcox@hatcreekenergy.com](mailto:gwilcox@hatcreekenergy.com); [geosimm@comcast.net](mailto:geosimm@comcast.net)

Phone: 303-316-3031  
Fax: 303-321-6999  
Copies: 1 set logs & dsts

Seamark Investments, Inc.  
Ray Burke  
129 Monarch Bay  
Dana Point, CA 92629

Phone: 949-499-4348  
Fax: 949-495-0138  
Copies: 1 set logs & dsts

Paul Simpson  
Box 1733  
Hays, KS 67601  
Email: [Paul@trilobitetesting.com](mailto:Paul@trilobitetesting.com) and [tina@triloibtetesting.com](mailto:tina@triloibtetesting.com)

Phone: 800-728-5369  
Fax: 785-625-5620  
Copies: 1 set logs & dsts

Bill Miller  
Email: [millwa@concentric.net](mailto:millwa@concentric.net)

Phone: 303-572-7787  
Copies: digital logs only

Murfin Drilling Company, Inc.  
250 N. Water, Suite 300  
Wichita, KS 67202

Phone: 316-267-3241  
Fax: 316-267-6004  
Copies: 1 LAS, 6 sets logs 3sets dsts