

15-065-20866

State Geological Survey
WICHITA BRANCH

KANSAS DRILLERS LOG

API No. 15 — Graham —
County Number

S. 5 T. 10s R. 22 ~~W~~ W
Loc. 440' FNL 440' FEL of NW/4
Graham
County

Operator
A. Scott Ritchie

Address
Suite 950 125 North Market Wichita, Kansas 67202

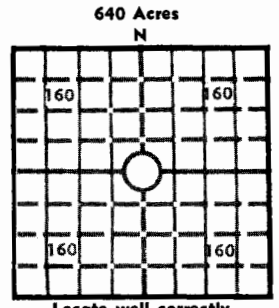
Well No. #1 Lease Name Sandlin

Footage Location
feet from (N) (S) line feet from (E) (W) line

Principal Contractor Geologist
Murfin Drilling Co. Affred W. Stude

Spud Date Total Depth P.B.T.D.
10-5-76 3835'

Date Completed Oil Purchaser
10-12-76 none



Elev.: Gr. 2319'
DF 2321' KB 2324'

CASING RECORD

Report of all strings set — surface, intermediate, production, etc.

Purpose of string	Size hole drilled	Size casing set (in O.D.)	Weight lbs/ft.	Setting depth	Type cement	Sacks	Type and percent additives
surface		8 5/8"		170'			

LINER RECORD

PERFORATION RECORD

Top, ft.	Bottom, ft.	Sacks cement	Shots per ft.	Size & type	Depth interval

TUBING RECORD

Size	Setting depth	Packer set at

ACID, FRACTURE, SHOT, CEMENT SQUEEZE RECORD

Amount and kind of material used	Depth interval treated

INITIAL PRODUCTION

Date of first production Producing method (flowing, pumping, gas lift, etc.)

RATE OF PRODUCTION PER 24 HOURS	Oil	Gas	Water	Gas-oil ratio
	bbls.	MCF	bbls.	CFPB
Disposition of gas (vented, used on lease or sold)			Producing interval (s)	

INSTRUCTIONS: As provided in KCC Rule 82-2-125, within 90 days after completion of a well, one completed copy of this Drillers Log shall be transmitted to the State Geological Survey of Kansas, 4150 Monroe Street, Wichita, Kansas 67209. Copies of this form are available from the Conservation Division, State Corporation Commission, 3830 So. Meridian (P.O. Box 17027), Wichita, Kansas 66217. Phone AC 316-522-2206. If confidential custody is desired, please note Rule 82-2-125. Drillers Logs will be on open file in the Oil and Gas Division, State Geological Survey of Kansas, Lawrence, Kansas 66044.

Operator
A. Scott Ritchie

DESIGNATE TYPE OF COMP.: OIL, GAS, DRY HOLE, SWDW, ETC.:

Well No. #1 Lease Name Sandlin

dry hole

S 5 T 10s R 22 K W

WELL LOG

Show all important zones of porosity and contents thereof; cored intervals, and all drill-stem tests, including depth interval tested, cushion used, time tool open, flowing and shut-in pressures, and recoveries.

SHOW GEOLOGICAL MARKERS, LOGS RUN, OR OTHER DESCRIPTIVE INFORMATION.

FORMATION DESCRIPTION, CONTENTS, ETC.	TOP	BOTTOM	NAME	DEPTH
DST #1 3610-3635' weak blow for 8 min flush tool second flow period no blow rec 10' mud IFP 25-25# FFP 38-38# IBHP 225# FBHP 250#				
DST #2 3742-3780' 30-45 30-45 weak blow for 13 min flush tool second flow period no blow rec 10' mud IFP 38-38-# FFP 38-50# IBHP 150# FBHP 75#				
DST#3 3776-3820' pkr failure				
DST #4 3772-3820' 30-45 30-45 weak blow for 30 min rec 30' vs/ocm IFP 50-50# FFP 50-63# IBHP 1176# FBHP 1019#				
			SAMPLE TOPS	
			Anh	1844' (+ 480)
			B/Anh	1882' (+ 442)
			Top	3337' (-1013)
			Heeb	3557' (-1233)
			Tor	3579' (-1255)
			Lans	3592' (-1268)
			B/KC	3820' (-1496)
			TD	3835' (-1511)

USE ADDITIONAL SHEETS, IF NECESSARY, TO COMPLETE WELL RECORD.

Date Received	<i>F. Judson Hipps</i> Signature
	F. Judson Hipps for A. Scott Ritchie Title
	9-12-77 Date